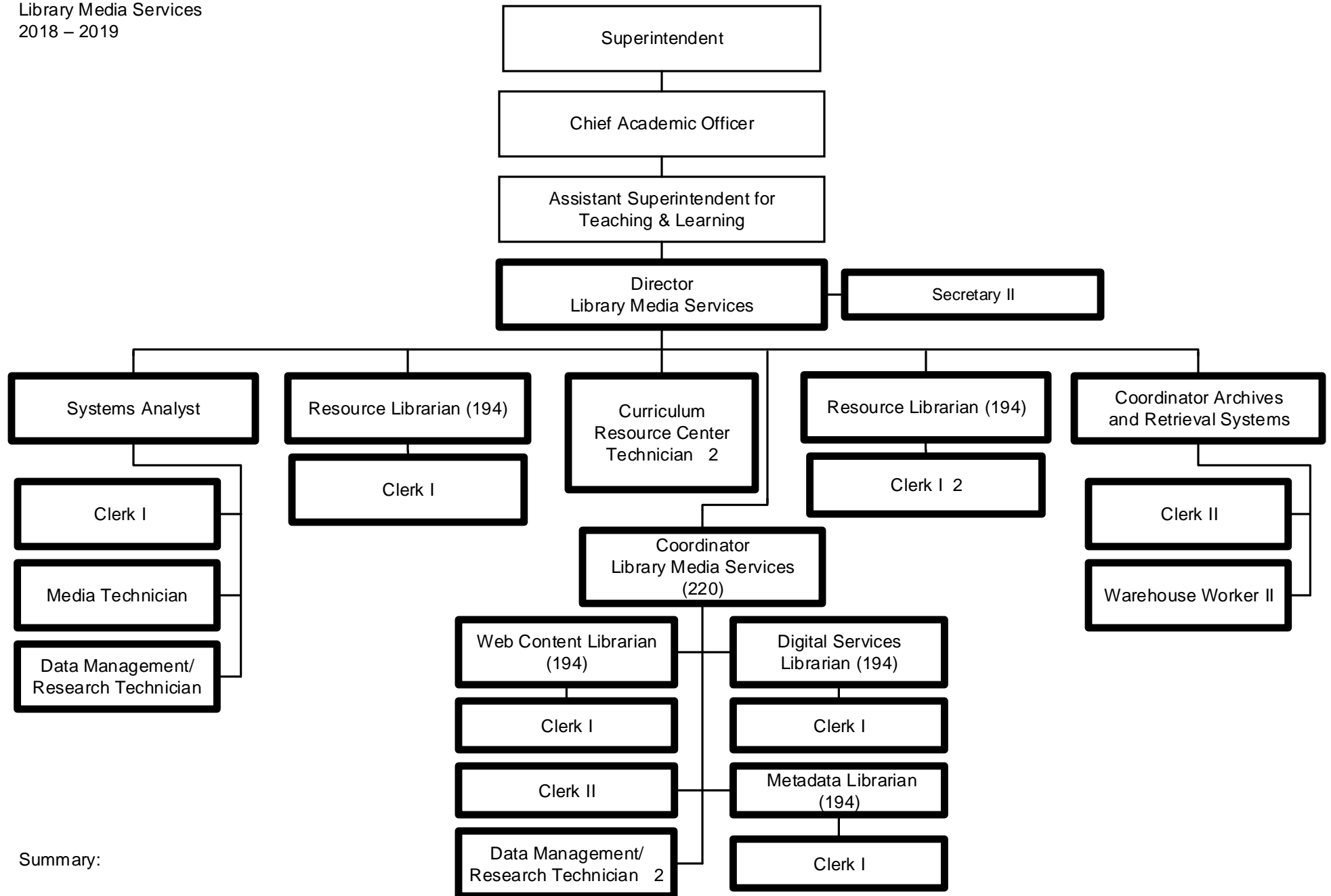


Summary:

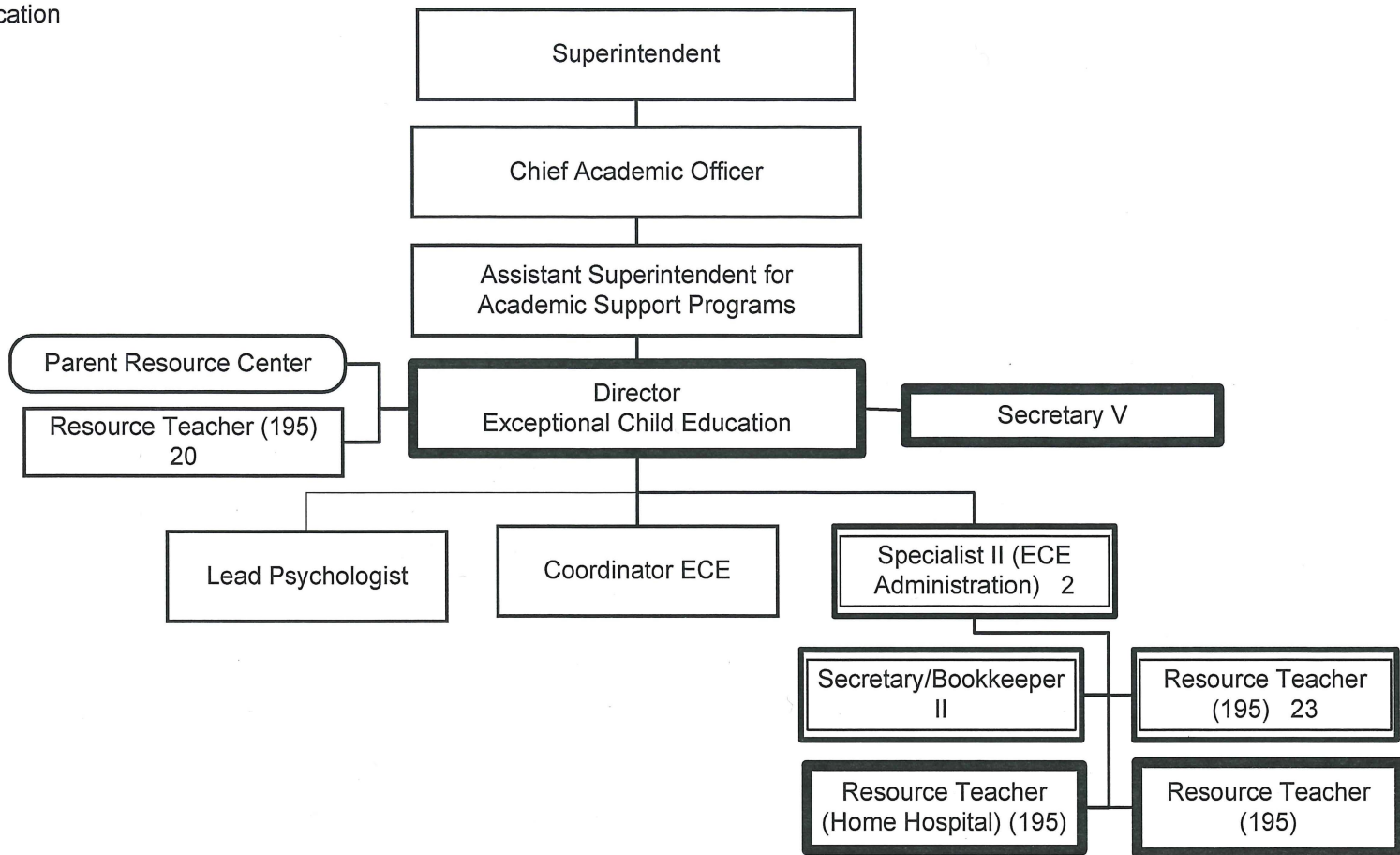
General Fund Positions: 3

Categorical Fund Positions: 4



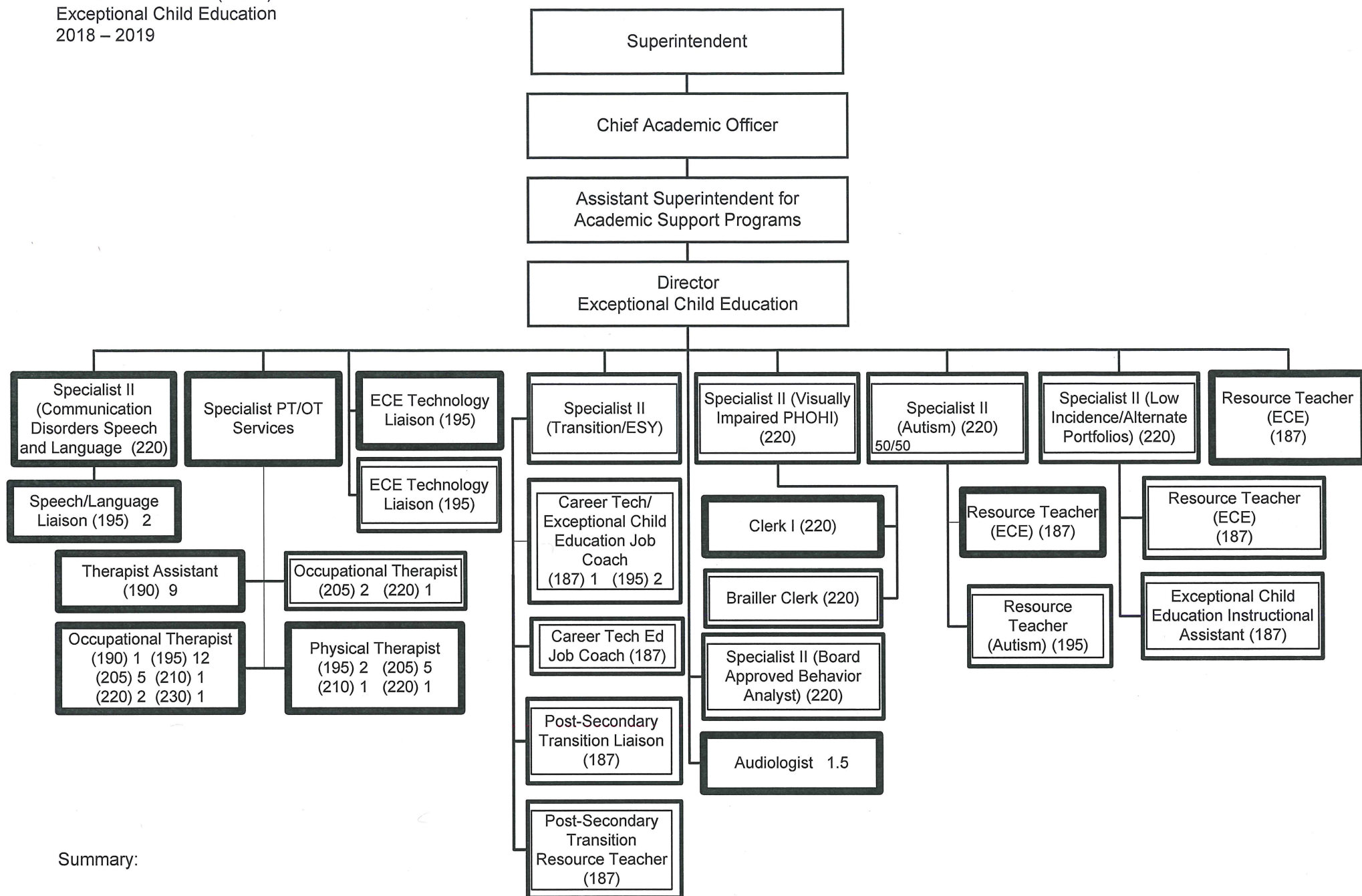
Summary:

General Fund Positions: 26
Categorical Fund Positions: 0



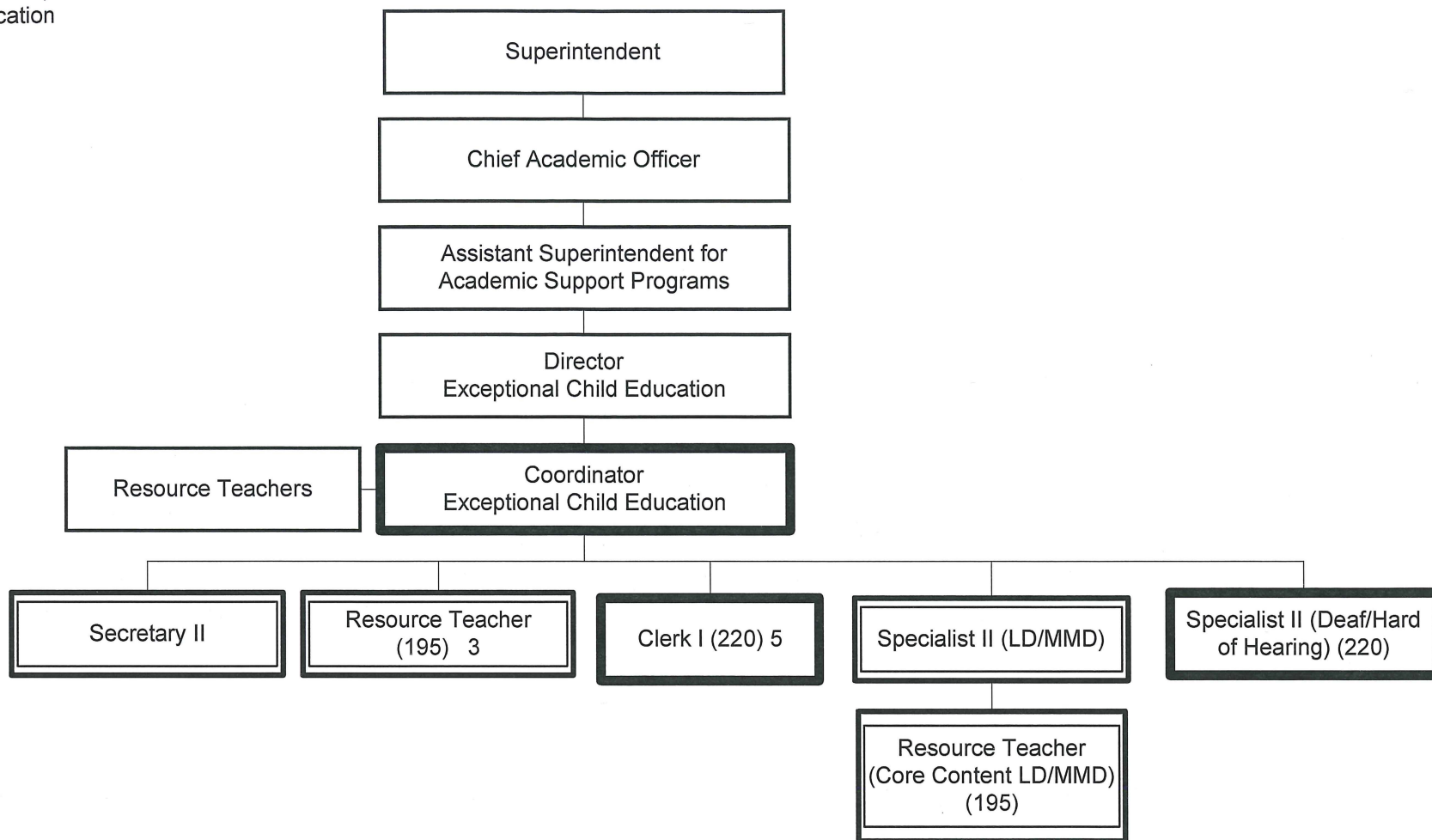
Summary:

General Fund Positions: 4
Categorical Fund Positions: 26



Summary:

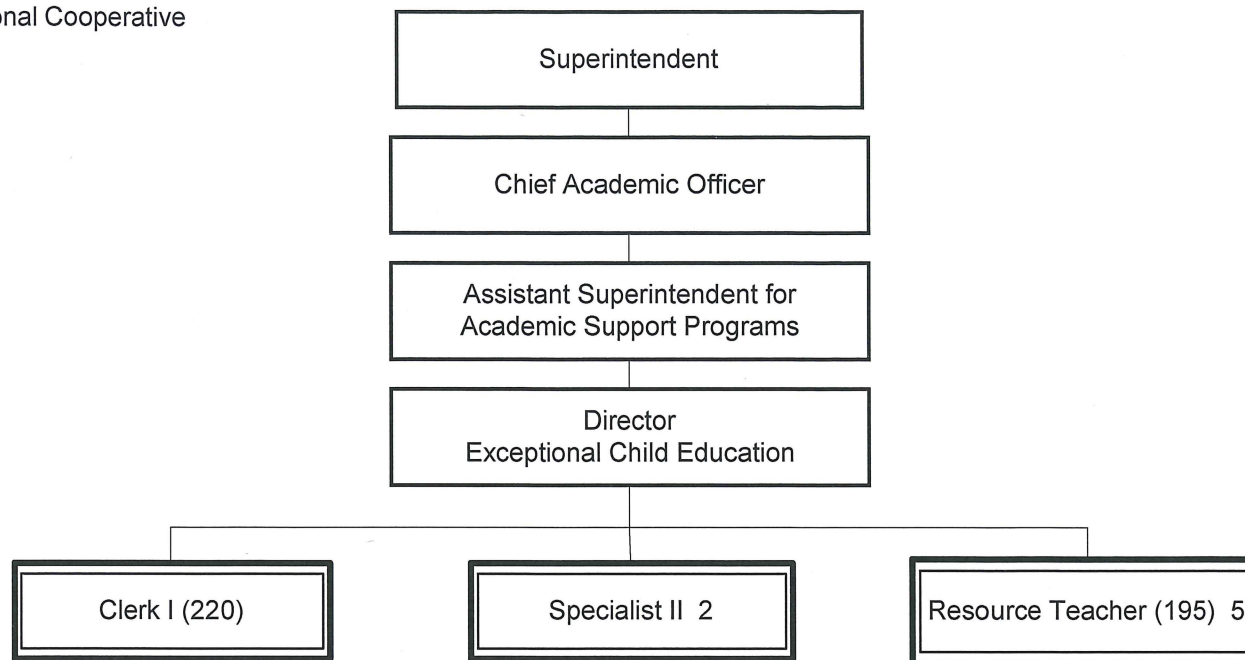
General Fund Positions: 49.5
 Categorical Fund Positions: 19



Summary:

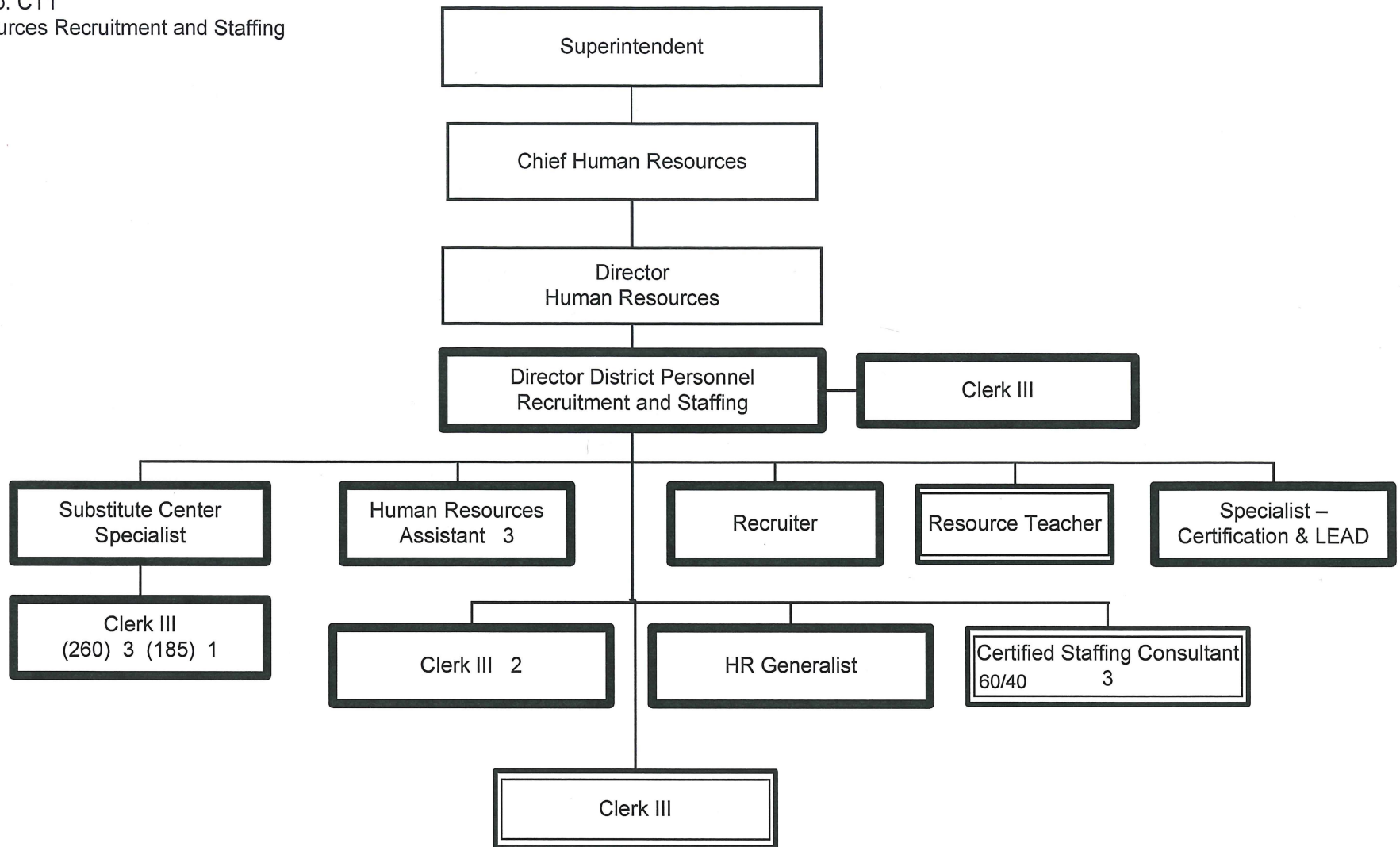
General Fund Positions: 7
Categorical Fund Positions: 6

Munis Unit No. GL1
Greater Louisville Educational Cooperative
2018 – 2019



Summary:

General Fund Positions: 0
Categorical Fund Positions: 8



Summary:

General Fund Positions: 15
Categorical Fund Positions: 5