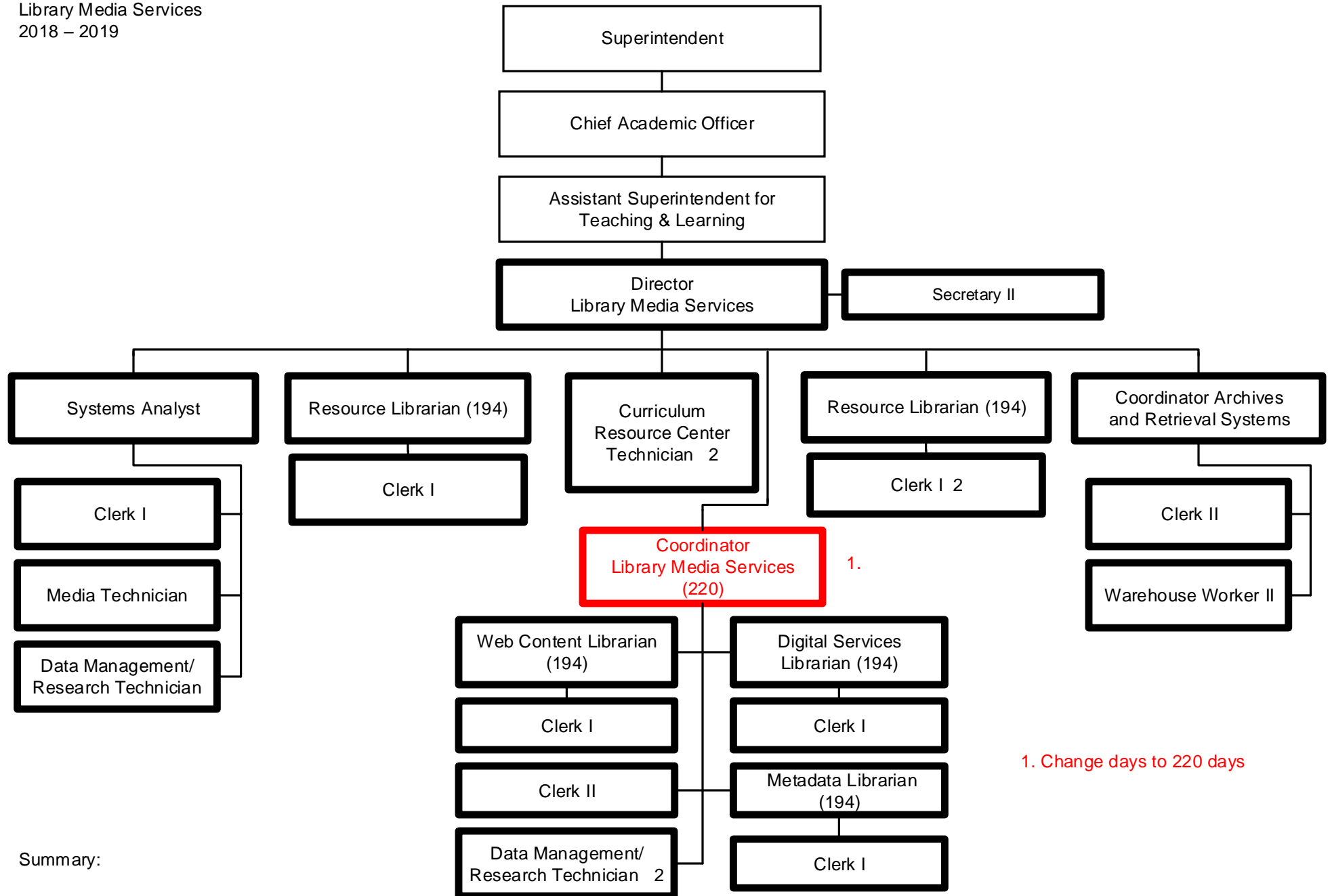


1. Change base days to 220 with 10 extended days if needed
2. Change from Categorical Fund position to General Fund position

Summary:

General Fund Positions: -2 3

Categorical Fund Positions: -5 4

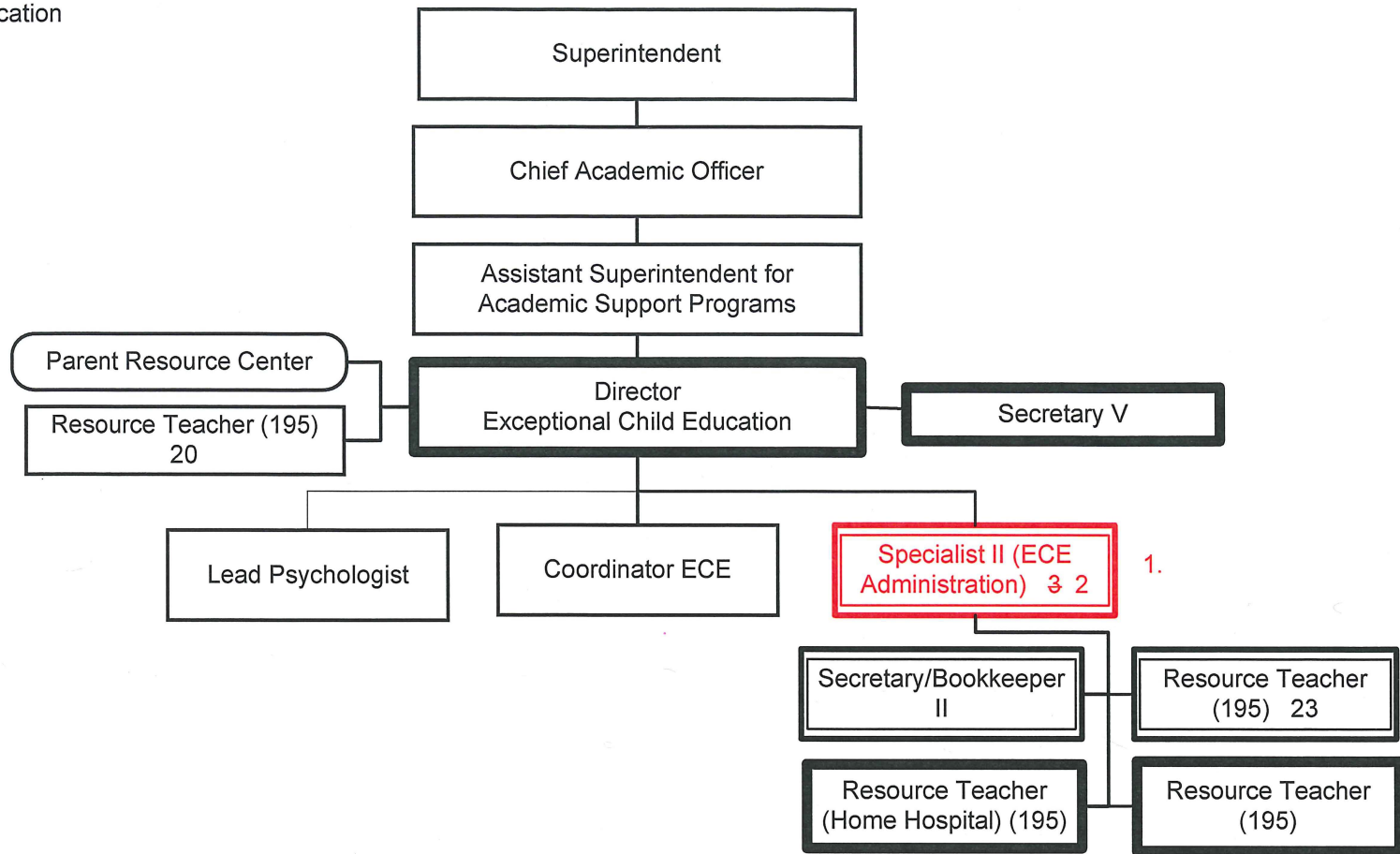


Summary:

General Fund Positions: 26
Categorical Fund Positions: 0

1. Change days to 220 days

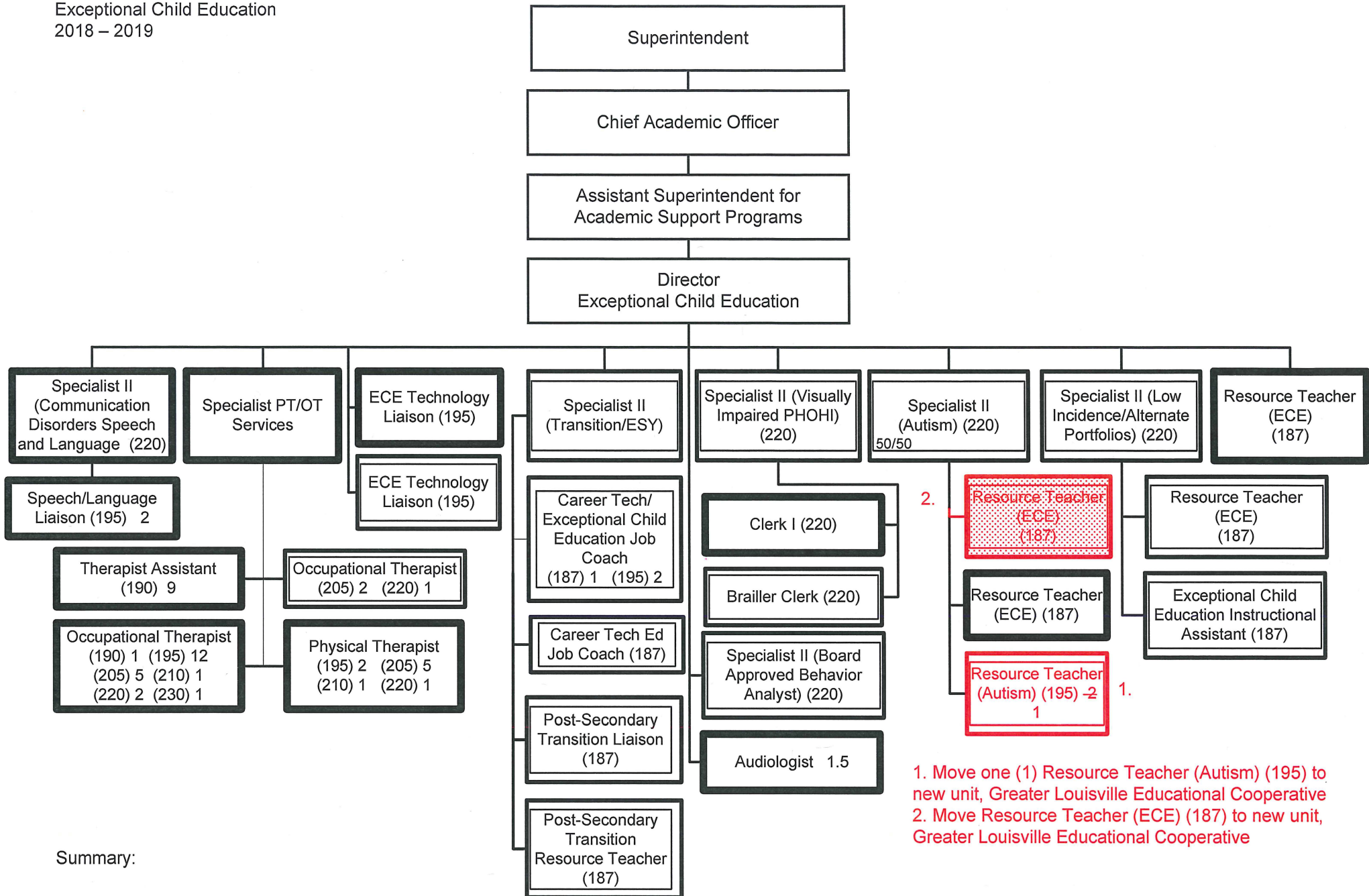
Submitted 4/24/28
5/29/18
Effective 7/01/18



1. Move one (1) Specialist II to new unit, Greater Louisville Educational Cooperation

Summary:

General Fund Positions: 4
 Categorical Fund Positions: ~~27~~ 26

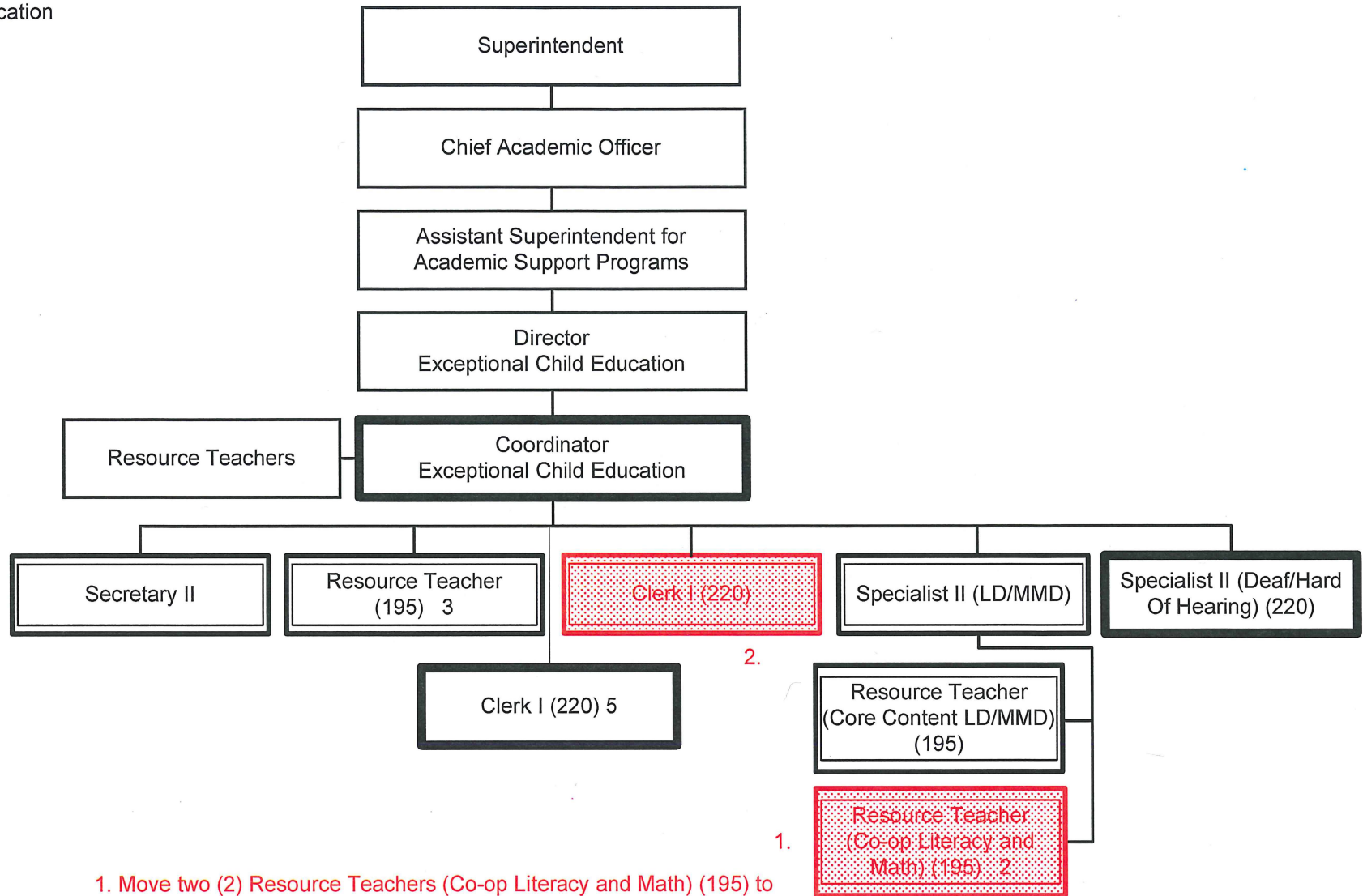


1. Move one (1) Resource Teacher (Autism) (195) to new unit, Greater Louisville Educational Cooperative
2. Move Resource Teacher (ECE) (187) to new unit, Greater Louisville Educational Cooperative

Summary:

General Fund Positions: 49.5

Categorical Fund Positions: ~~24~~ 19

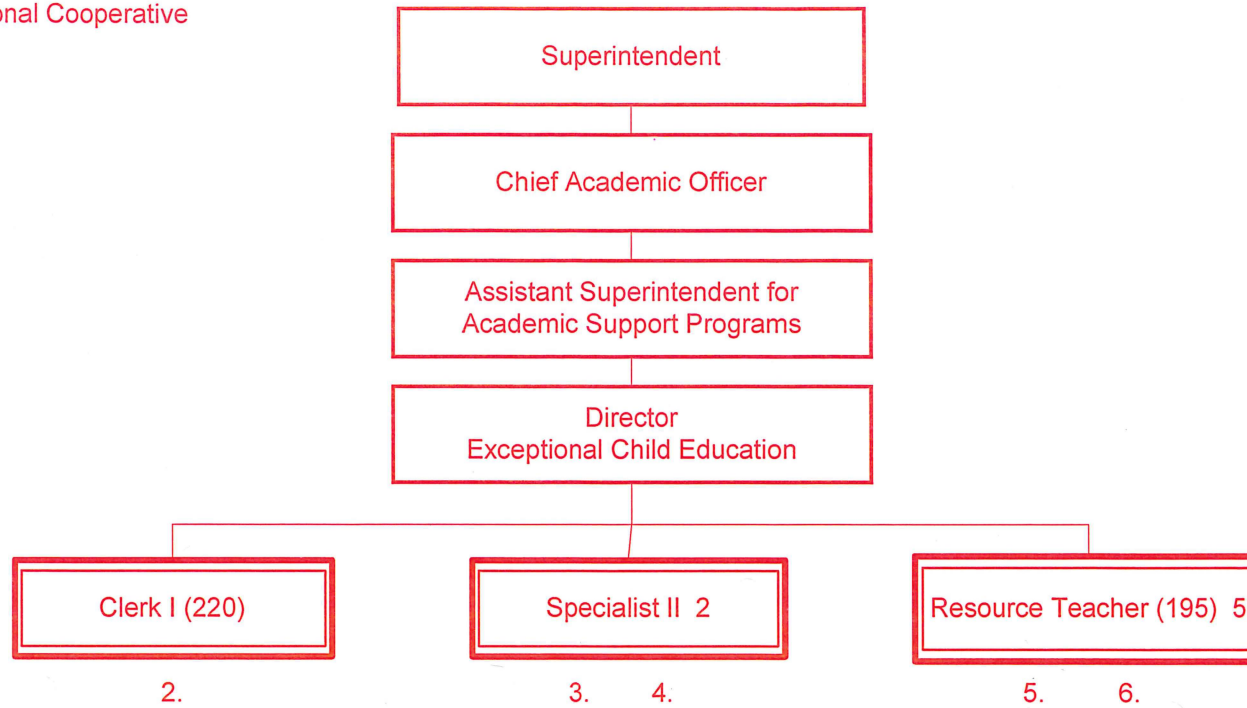


Summary:

General Fund Positions: 7

Categorical Fund Positions: 9 6

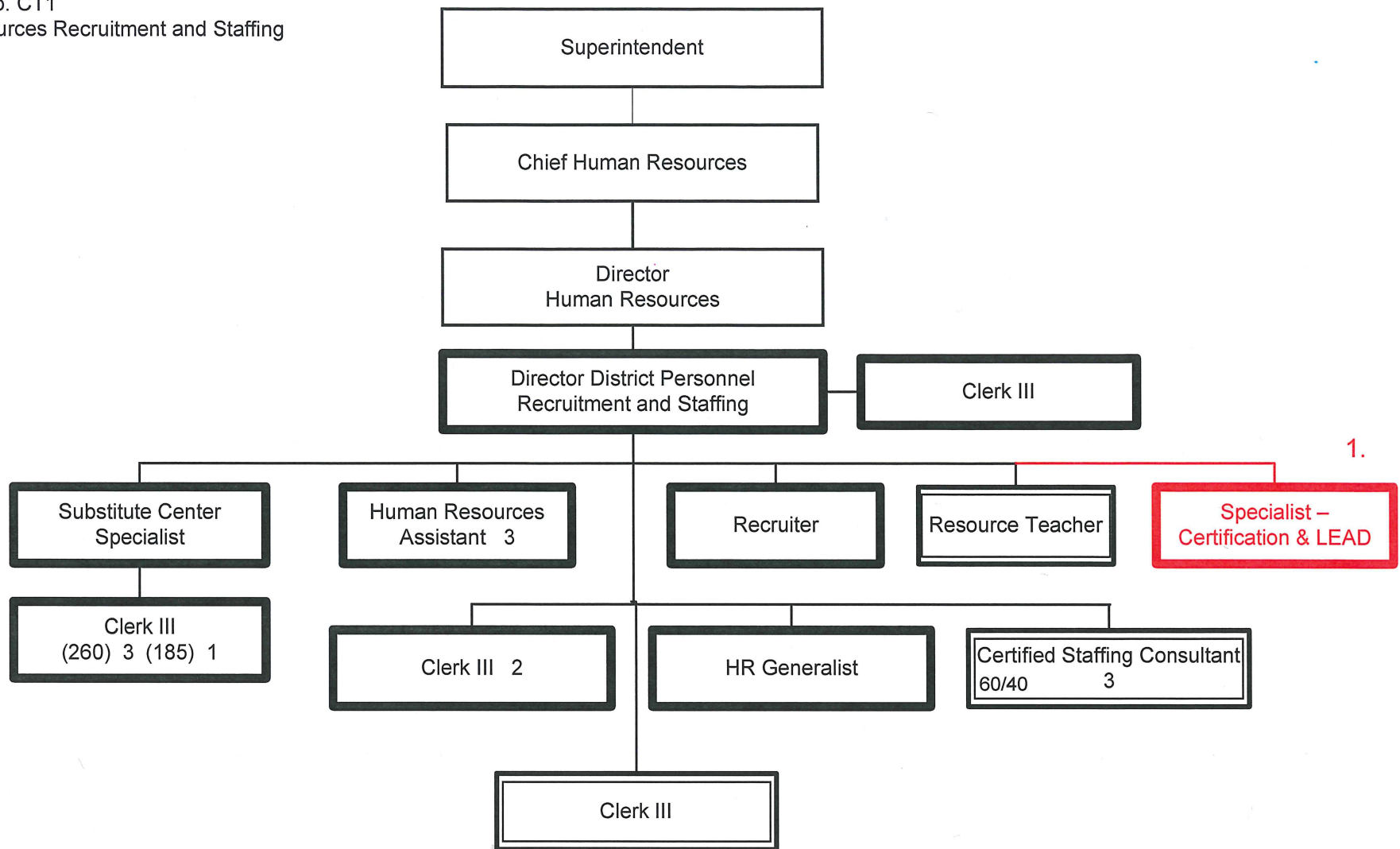
1.



1. Create new unit for Greater Louisville Educational Cooperative
2. Move Clerk I (220) from EC1 Exceptional Child Education unit
3. Move one (1) Specialist II from EC1 Exceptional Child Education unit
4. Move funding for one (1) Specialist II from FI1 School Culture and Climate
6. a) Move funding for one (1) Resource Teacher (Autism) from EC1 Exceptional Child Education unit
 b) Move one (1) Resource Teacher (Co-op Literacy) from EC1 Exceptional Child Education unit
 c) Move one (1) Resource Teacher (Co-op Math) from EC1 Exceptional Child Education unit
 d) Move one (1) Resource Teacher (ECE) (187) from EC1 Exceptional Child Education unit and change days to 195 days
6. Move funding for one (1) Resource Teacher (195) from FI1 School Culture and Climate unit

Summary:

General Fund Positions: 0
 Categorical Fund Positions: 8



1. Add Specialist – Certification & LEAD

Summary:

General Fund Positions: ~~14~~ 15

Categorical Fund Positions: 5