



Bullitt County Public Schools

1040 Highway 44 East
Shepherdsville, Kentucky 40165

502-869-8000
Fax 502-543-3608
www.bullittschools.org

MEMO:

TO: Mr. Keith Davis

FROM: Bret Highley *ABH*

DATE: April 9, 2018

RE: Construction update: Bullitt Lick Middle School Addition/Renovation BG 17-14

Please find the monthly construction update for Bullitt Lick Middle School as submitted by Cate Ward, Studio Kremer Architects.

If you have any questions, please call me at 502-921-3659.

Attachments:

- April Construction Update

OK B April
CP
B. Highley



CONSTRUCTION UPDATE

From April 6, 2018 Progress Meeting

Bullitt Lick Middle School – Renovation and Gym Addition

555 W Blue Lick Road

Shepherdsville, KY 40165

SKA #: 2016-86

BG #: 17-148

CONSTRUCTION SUMMARY

EH Construction made quite a bit of progress on the new gymnasium and entrance additions as well as furthering general site work at BLMS during spring break. The membrane roof at the new Gym has been installed. All the new concrete floor slabs have been completed. Brick veneer work at gym addition continues and they will move onto the entrance and administration addition soon. Steel erection continues at the Administration Suite expansion and new Main Entrance Addition. EH Construction is pushing to get the exterior shell of the Additions completed to allow interior finish work to commence prior to summer break.

EH Construction used the schedule school break to push their interior work by removing ceilings in the classroom wing to installing new HVAC ductwork and pipe runs. You'll notice on the attached phasing diagram that more interior spaces have been highlighted in yellow to note work taking place on electrical runs, ceiling demolition, new sprinkler runs as well as other infrastructure routing. Work has finished on the new steel beams and columns that will take the place of an existing loadbearing walls that used to separate the Cafeteria and Media Center. EH Construction is going to set the new steel structure at the Commons wall next week.

The goal at the end of the 2018 Summer Break is to have Areas C (the building additions) & Area B (Common Areas) completed before the first day of school, and work at Area A will continue into the fall 2018 semester (*refer to the attached phasing diagram for areas of work in progress*).

Please see the next two pages for EH Construction's progress report that includes progress made during the past two weeks as well as a look forward to the next two weeks.

Bullitt Lick Middle School Addition/Renovation
PROGRESS MEETING AGENDA

ITEMS TO BE DISCUSSED

• **Work Completed Last 2 Weeks**

- EH (GC) – Grout column bases in library, continue with installation of HM frames as required, assist in relocation of furnishings in occupied areas, build new barricade at new commons wall, begin removal of shoring in library, general cleaning and supervision of trades onsite.
- Flynn Brothers (Sitework) – Complete installation of new SDR 35 site sanitary sewer in existing bus parking lot, tie in (3) new sewer mains down the classroom corridors, repour sidewalks, asphalt patch in bus parking is scheduled for today, begin excavation to subgrade on the rerouting of Bullitt Lick Middle School Road.
- AST (Abatement) – Complete remaining abatement in admin and copy room.
- HCL (Selective Demo) – Complete removal of ceiling in classrooms in 8th grade corridor, demo existing wall at old counselors office, demo existing windows in art room, cut in 4 new door openings in existing corridors.
- Uessler (Concrete) – Complete column footings in old library.
- TL Young (Masonry) – Interior Masonry walls in Area C are 95% complete, complete infill of windows in art room, complete new art room corridor and lay new masonry wall at old counselors office in commons area.
- Charlie Reynolds Industrial (Steel) – Complete installation of W18 beam lines in existing library, install remaining bar joist at front entry and begin decking at entry.
- Purefoam (Roofing & Insulation) – Due onsite today to continue spraying remainder of Area C walls and begin spray foam roofing for Area C.
- American Roofing & Sheet Metal (Sheet Metal & TPA) – Complete installation of TPA Membrane.
- Stanley Schultze (Aluminum Storefronts) – Receive translucent panels and windows at their shop.
- Atlas (Doors & Specialties) –
- Bennett's Carpets (Interior Finishes) – Continue framing in administration area.
- Martin Flooring (Gym Floor) –
- Toadvine (Gym Equipment) – Onsite to field measure for basketball goals and review the demo of existing equipment.
- Bogg's Painting –

- Landmark Sprinkler – Continue with installation of sprinkler piping in old gym, art room and band room.
- Geothermal Earthworks – Continue with tying in header piping, scheduled to cross the road to the building and backfill over the weekend.
- Lusk Mechanical – Re-route existing 2 ½" domestic water line for installation of new w18 beams, tie in sanitary sewer at 3 locations in the corridor, rough in plumbing is 95% complete in Area C, complete hydronic mains across the new gym, continue with hydronic mains in 8th grade corridors, continue cutting taps in previously installed ductwork in Area A & B, demo existing and install new ductwork in 8th grade corridor classrooms and provide temporary units, mechanical insulation continues throughout, new RTU-1, RTU-2 & OA-1 are scheduled to be installed today.
- Payne Electric – Pull existing transformer, excavate, provide flowable fill as recommended by Gem Engineering, reinstall transformer (still waiting on confirmation to energize) work on overhead rough in work in old gym, rehang fixtures and support cabling in 8th grade corridor, continue with overhead rough in work in new gym, continue with cable tray installation throughout.

• **Work Anticipated Next 2 Weeks**

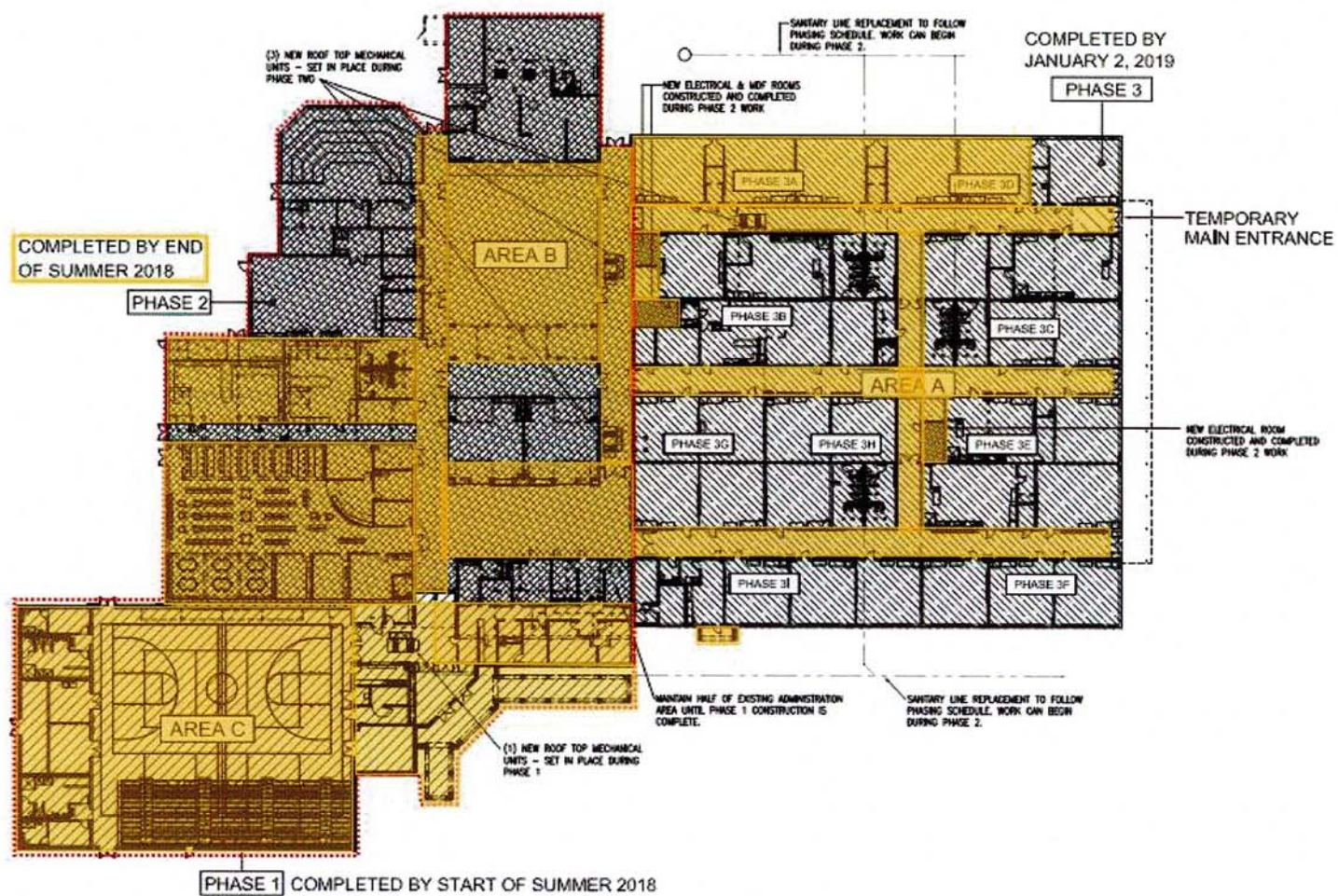
- EH (GC) – Install HM frames in Arts Corridor, demo shoring in library, continue with roof blocking for Area C addition, relocate barriers in library and begin installation of shoring for commons wall. (Discussion Item)
- Flynn Brothers (Sitework) – Complete paving patch today, continue work on relocation of BLMS Road & continue with relocation of v ditch and storm piping.
- AST (Abatement) –
- HCL (Selective Demo) –
- Uessler (Concrete) – Pour isolations around columns in library, complete trench pour in classroom corridors, complete remaining foundation and slab at 6th grade corridor alcove, prep and pour entry slab for Area C.
- TL Young (Masonry) – Complete remainder of interior walls for Area C, complete CMU infill below remaining translucent panel in east wall of the gym, continue with brick veneer for Area C.
- Charlie Reynolds Industrial (Steel) – Complete misc. angle and decking for entry and admin area, begin erection of walkway structural steel.
- Purefoam (Roofing & Insulation) – Complete spray foam wall insulation on gym addition begin installation of insulation and spray foam roofing for Area C.
- American Roofing & Sheet Metal (Sheet Metal & TPA) – Complete fabrication of sheet metal for high gym roof.

- Stanley Schultze (Aluminum Storefronts) – Install translucent panels in gym once brick is complete.
- Atlas (Doors & Specialties) – Deliver the balance of HM doors and frames.
- Bennett's Carpets (Interior Finishes) – Complete framing in admin area, begin framing in existing library.
- Martin Flooring (Gym Floor) –
- Toadvine (Gym Equipment) –
- Bogg's Painting – Begin block fill in Area C.
- Landmark Sprinkler – Continue with sprinkler piping in Area B.
- Geothermal Earthworks – Continue with header-tie in work, should be ready to fill system in about 3 weeks.
- Lusk Mechanical – Complete installation of roof top units and startup RTU-1 on Monday, continue with hydronic mains throughout, begin work on overhead roof drains for Area A, continue with mechanical insulation throughout, continue with ductwork installation in Area C.
- Payne Electric – Energize switchgear, complete power to rooftop units, complete installation of panels and pull feeders to Electrical Room for Area C, complete overhead conduit in gym and begin pulling conductors, continue with installation of cable tray and fire alarm throughout.

- **Upcoming Milestones**

- May 4th No School
- Last Day of School for Teachers May 8th

PHASING DIAGRAM & AREAS OF CONSTRUCTION



CONSTRUCTION PROGRESS PHOTOS



Gymnasium and Entrance Addition taking shape. (4-6-2018)



Crane on site lifting new Roof Top mechanical units in place. (4-6-2018)



New openings at Art's Corridor for new Storage Rooms. (4-6-2018)



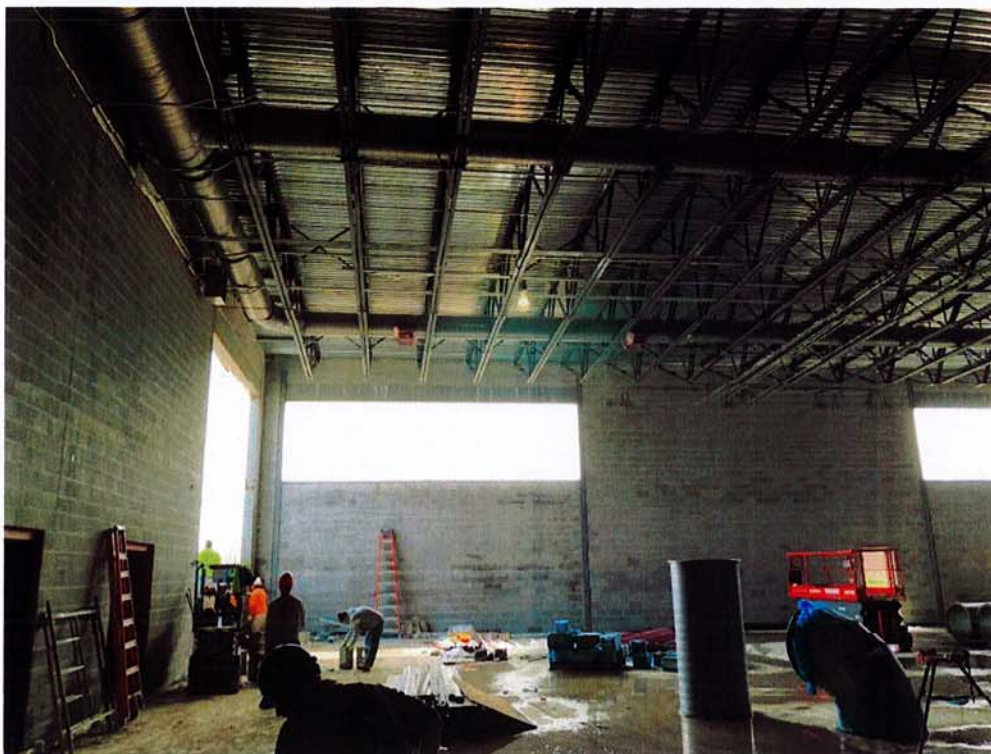
Steel work at wall between Cafeteria and Flexible Classrooms. (4-6-2018)



New sprinkler lines and ductwork at old gym. (4-6-2018)



Interior view of New Gym. (4-6-2018)



Interior view of New Gym. (4-6-2018)



Ceiling and floor demolition at typical 8th grade classroom. (4-6-2018)



New toilet partition at Arts Corridor restroom. (4-6-2018)