

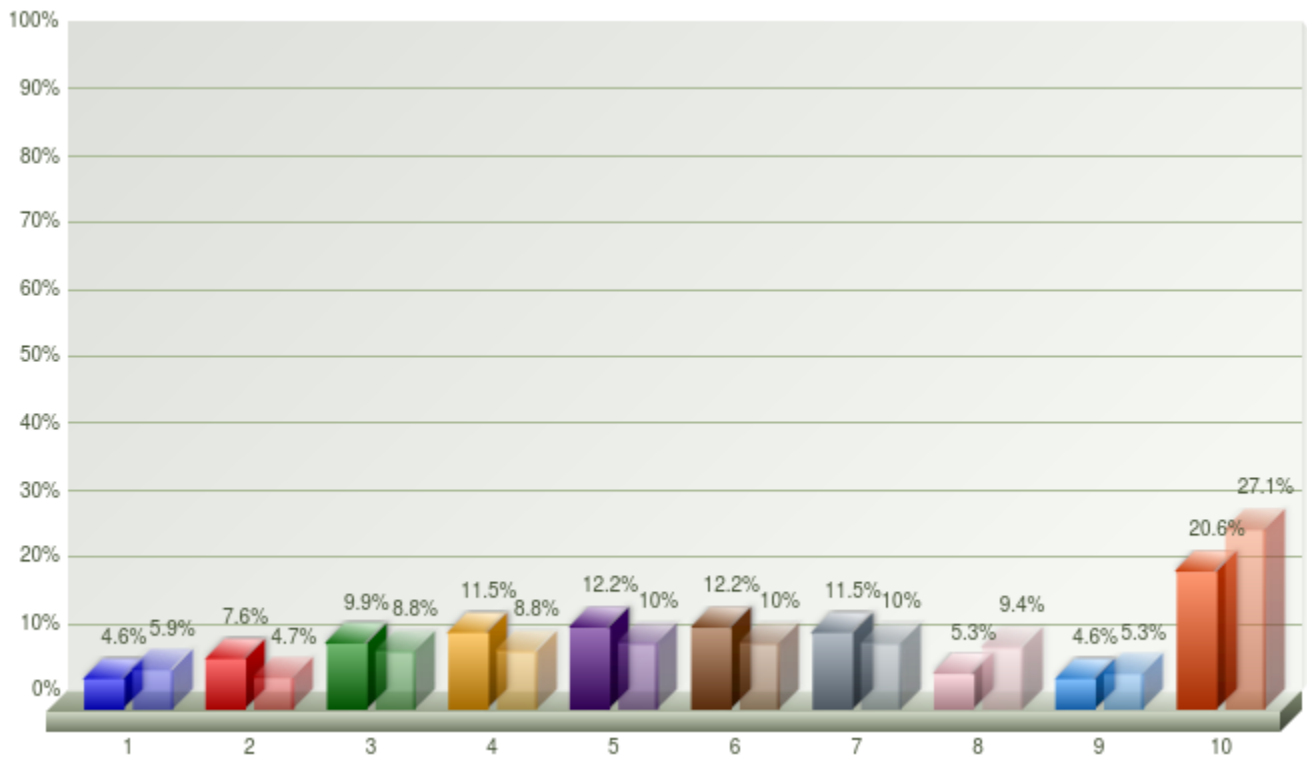
Page 1

1. August 1st 2017 to December 31st 2017, All sites (135 walk-throughs)
VS

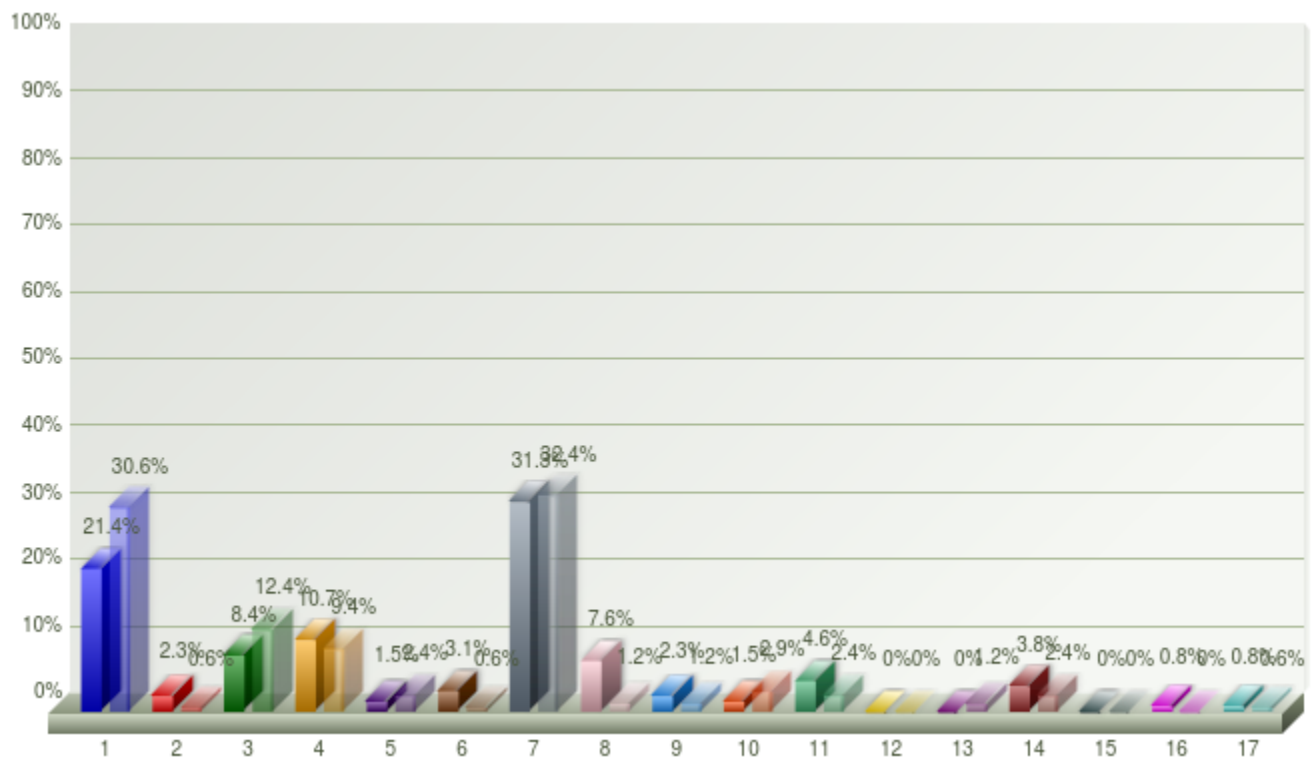
2. January 1st 2018 to March 25th 2018, All sites (179 walk-throughs)

Newport Domain 3 - Instruction

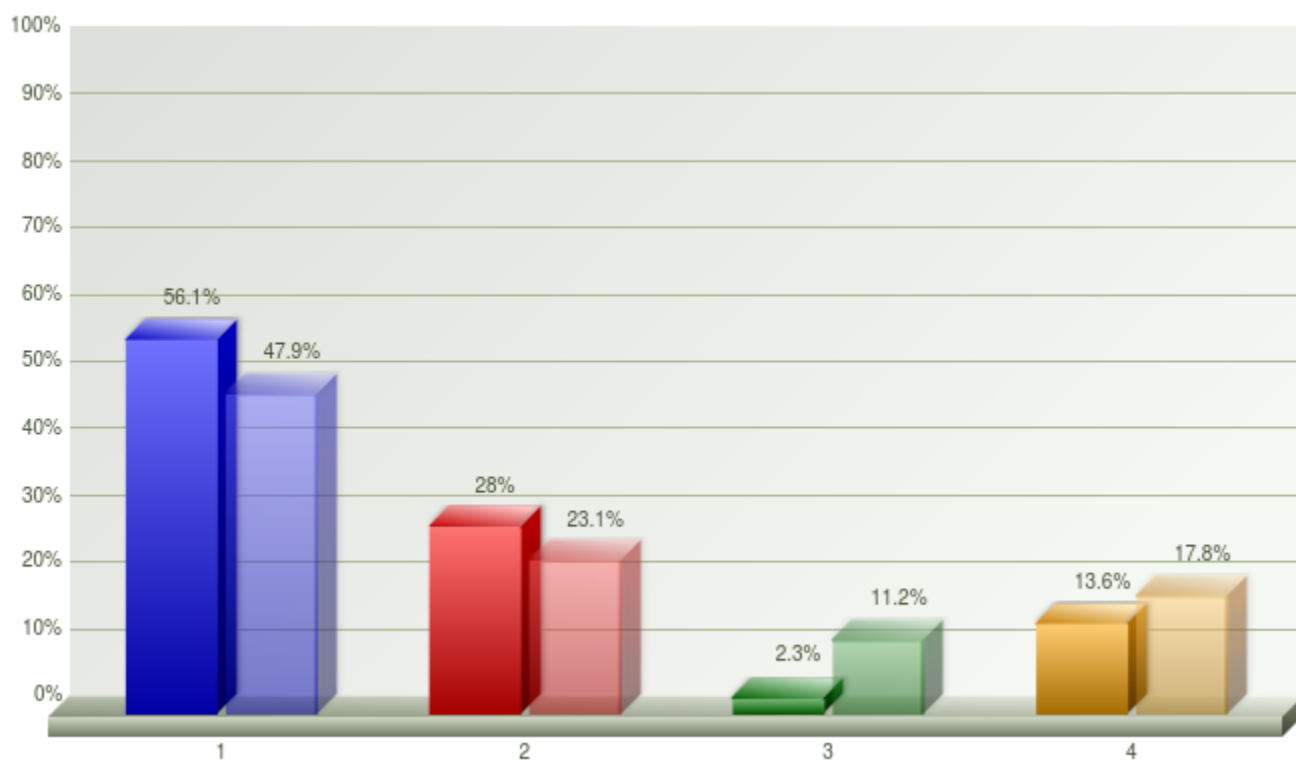
Grade	Total 1		Total 2	
1. K	6	4.6%	10	5.9%
2. 1	10	7.6%	8	4.7%
3. 2	13	9.9%	15	8.8%
4. 3	15	11.5%	15	8.8%
5. 4	16	12.2%	17	10%
6. 5	16	12.2%	17	10%
7. 6	15	11.5%	17	10%
8. 7	7	5.3%	16	9.4%
9. 8	6	4.6%	9	5.3%
10. 9-12	27	20.6%	46	27.1%
Total	131	100%	170	100%



Subject		Total 1		Total 2	
1. Mathematics		28	21.4%	52	30.6%
2. Writing		3	2.3%	1	0.6%
3. Science		11	8.4%	21	12.4%
4. Social Studies/History		14	10.7%	16	9.4%
5. Health/PE		2	1.5%	4	2.4%
6. PLTW		4	3.1%	1	0.6%
7. Reading		41	31.3%	55	32.4%
8. Reading/Math Intervention		10	7.6%	2	1.2%
9. Music		3	2.3%	2	1.2%
10. Art		2	1.5%	5	2.9%
11. Special Education		6	4.6%	4	2.4%
12. ELL		0	0%	0	0%
13. Gifted		0	0%	2	1.2%
14. CTE		5	3.8%	4	2.4%
15. Drama		0	0%	0	0%
16. Spanish		1	0.8%	0	0%
17. Media Specialist		1	0.8%	1	0.6%
Total		131	100%	170	100%



Grouping		Total 1		Total 2	
■	1. Whole	74	56.1%	81	47.9%
■	2. Small	37	28%	39	23.1%
■	3. Pairs	3	2.3%	19	11.2%
■	4. Individual	18	13.6%	30	17.8%
Total		132	100%	169	100%



Time of Class		Total 1		Total 2	
■	1. Beginning of the Class	42	32.1%	71	42%
■	2. Middle of the Class	74	56.5%	78	46.2%
■	3. End of the Class	15	11.5%	20	11.8%
Total		131	100%	169	100%

