




Bullitt County Public Schools

1040 Highway 44 East
Shepherdsville, Kentucky 40165

502-869-8000
Fax 502-543-3608
www.bullittschools.org

MEMO

To: Board Members

From: Keith Davis 

Date: March 9, 2019

Re: iLead - Automation Economy Resolution

Approved by the
Bullitt County
Board of Education
Date ~~MAR 12 2018~~

I request that you approve the attached resolution after reviewing the accompanying presentation slides. I have been in discussions with other OVEC superintendents and staff about the possible creation of a second iLead Academy modeled on the successful model in Carroll County, but in partnership with Bullitt, Shelby, Spencer, and Jefferson Counties. The planning and opening will be paid for with grant funding, should the funding be approved. One funding request has already been submitted by OVEC to the New Schools Venture Fund and has advanced to the final round of consideration,. A second funding source, the New Skills for Youth grant through KDE is also open. This grant required the attached resolution to be approved by the local Board of Education of proposed participating districts.

The resolution does not bind the Board to participate in the project, but only in the planning process that may lead to the development of a new option for excellence for our students.

I have spoken with Mr. Bacon regarding this resolution, since the planning will occur after he becomes superintendent, and he is also in support of approving this resolution. I ask for the Board's approval of the resolution as presented.

A RESOLUTION OF THE BULLITT COUNTY BOARD OF EDUCATION

WHEREAS, the Board of Education of the Bullitt County Schools has the desire for all our students to be globally competitive; and,

WHEREAS, we recognize each student has unique skills, aspirations, capacities, and dreams and we believe learning must be personalized to meet individual needs; and,

WHEREAS, we believe together we can provide students in our district more opportunities to succeed in life;

WHEREAS, we commit to provide a broader continuum of learning options to facilitate ALL our students becoming College and Career Ready upon graduation; and,

WHEREAS, we commit to set high expectations for ALL students; and,

WHEREAS, we commit to provide ALL students with choices on how and where they will learn; and,

WHEREAS, we commit to foster a greater college-going, work-ready culture throughout our region; and,

WHEREAS, we commit to work to drive gains in ALL students' academic knowledge and preparation for life beyond high school graduation; and,

WHEREAS, we commit to provide students with enhanced opportunities to earn college credits while in high school to make pursuit of postsecondary education more affordable and attainable for them; and,

WHEREAS, we commit to align our educational programs with the workforce needs and industry standards of our regional employers to support economic development and job growth in the region; and,

WHEREAS, we commit to providing our students with the skills necessary to be employable and competitive in the workplace; and,

WHEREAS, we commit to making learning more relevant to our students to reduce the number of students who drop out or fall behind; and,

WHEREAS, we commit to expand our students' knowledge of specific career options, exposure to the world of work, and understanding of relevant work certifications and postsecondary studies; and,

WHEREAS, we commit to engage with partners in our community to facilitate the provision of adequate opportunities for our graduates to live, work, and contribute to the future growth and prosperity of our community and Commonwealth; therefore,

BE IT HEREBY RESOLVED THAT, the Board of Education of the Bullitt County Public Schools resolves to:

1. Cooperate toward the planning of a Regional Career Academy that expands career pathways studies available to students in our school districts; and,
2. Explore ways to align and develop educational programs in our schools to provide rigorous and connected learning opportunities from which students may choose; and,
3. Explore and plan how to create and participate in a Regional Career Academy in collaboration with the Kentucky Department of Education with funds provided by the New Skills for Youth Grant,
4. Work to build partnerships with regional business and industry partners, postsecondary representatives, economic developers, regional Workforce Investment Boards, other school districts, and representatives of our parents and students; and,
5. Ensure New Skills for Youth planning grant funds are used in strict compliance with the terms of the grant.

ENTERED INTO ON THIS DAY, March 12, 2018, by:



Debby Atherton, Chairperson



Dr. Keith Davis, Superintendent



Proposal

iLEAD – Automation Economy

Proposal to create a regional Career Academy & Early College for students from Bullitt, Jefferson, Shelby & Spencer Counties



Why focus on the Automation Economy?

World Economic Forum 2016: "Educational and learning environments **MUST** change to help people stay employable in the workforce of the future."



The Automation Economy

“The new workplace requires a workforce trained for expertise that will drive the future economy and with the flexibility to adapt to rapid change.”

- *Information Technology & the US Workforce*, National Academies of Science, Engineering & Medicine



Education must evolve, with a mix of innovations in delivery (online, self-directed, ongoing)

Learners must cultivate creativity, adaptability, critical thinking, other 21st Century skills



New credentialing systems will arise as self-directed learning expands

Training and learning systems will not meet industry needs within the next decade



Technological forces will eliminate jobs/fundamentally change workplace

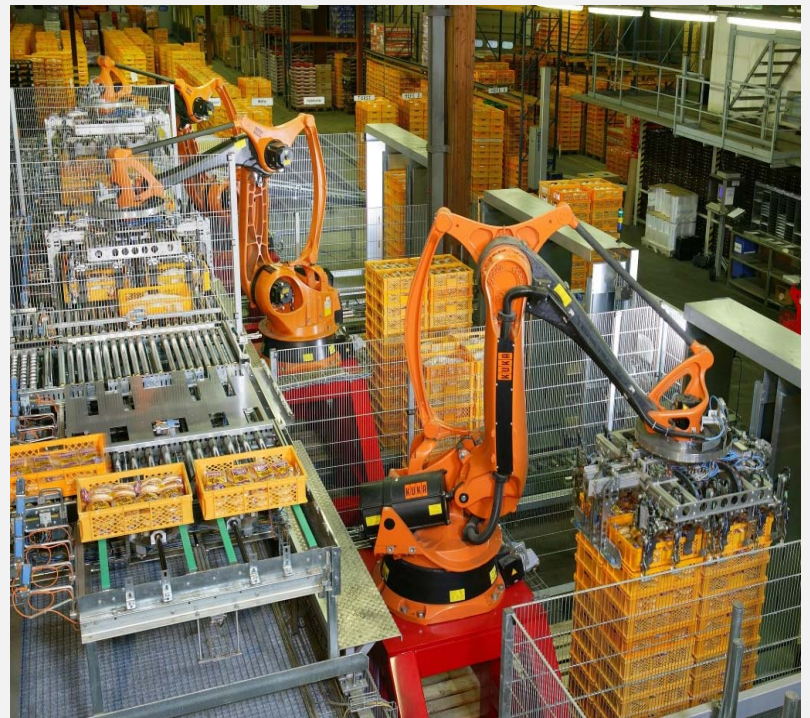
**Why create a
regional school?**



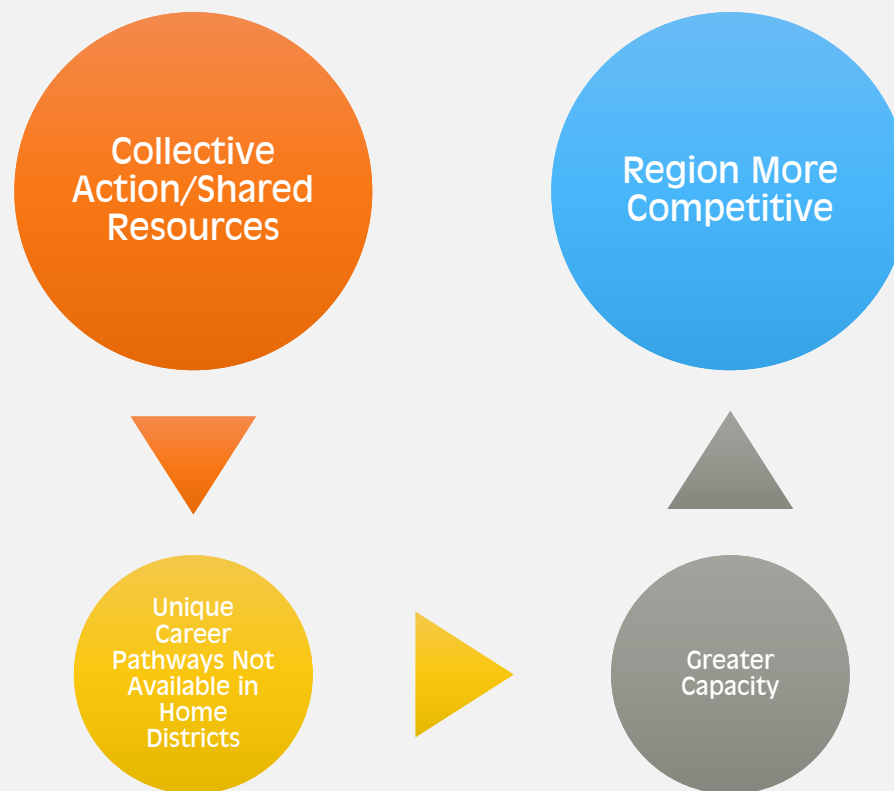
Regional Economic Development

No longer is just one industry important to economic growth for a region. It takes many businesses – large and small – for a region to be globally competitive for job creation and retention

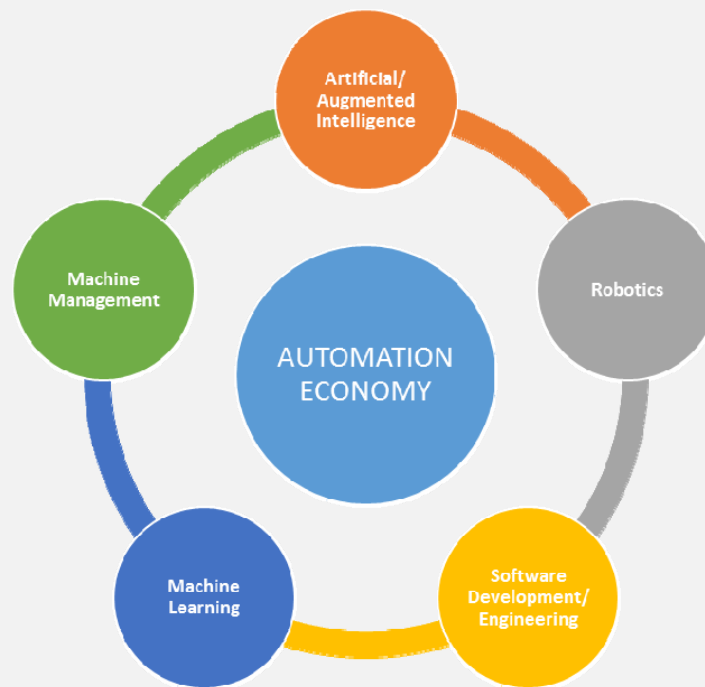
All businesses in a region need a pipeline of qualified workers to increase productivity, drive innovation, and compete in that global economy



Regional Collaboration to Educate the Workforce



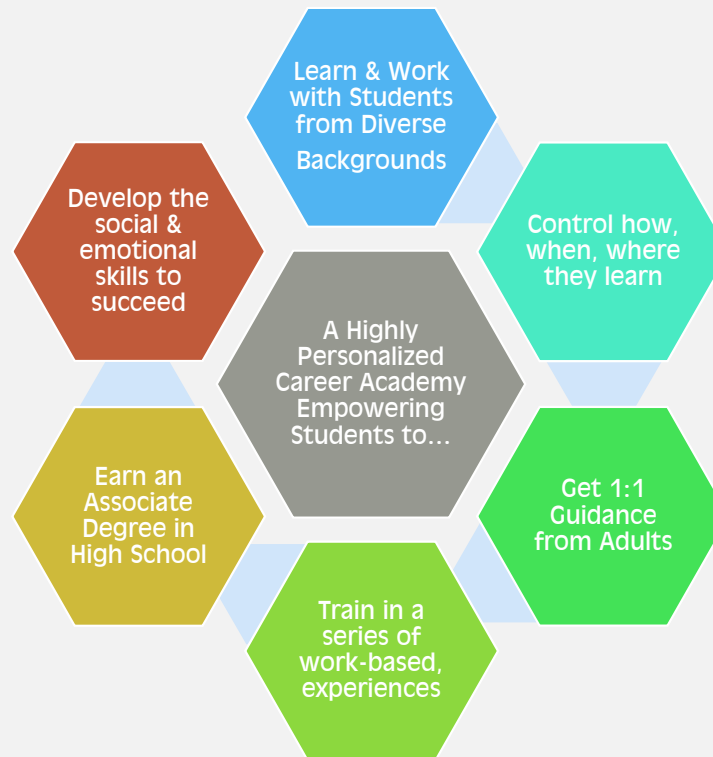
Competencies for Automation Economy



How will iLEAD – AE
benefit our students?



iLEAD's Mission



iLEAD's Revolutionary High School Design



Full-time, full-day high school

Aligned to highest demand employment sectors

100% Competency Based

Students attend college full-time as juniors/seniors



Advanced Manufacturing

Construction

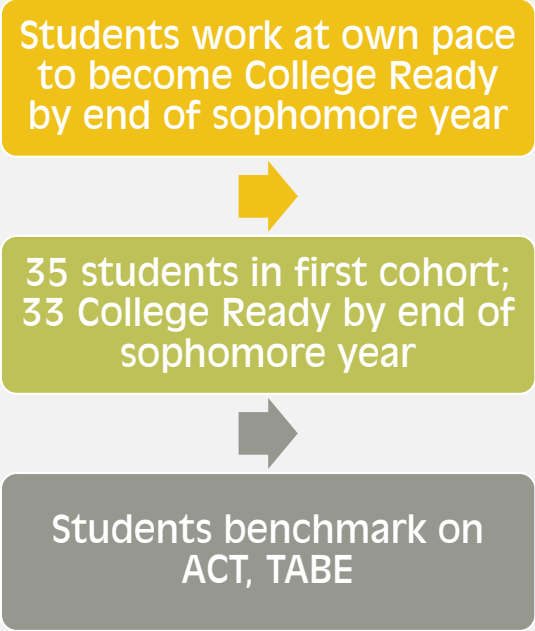
Engineering

Healthcare

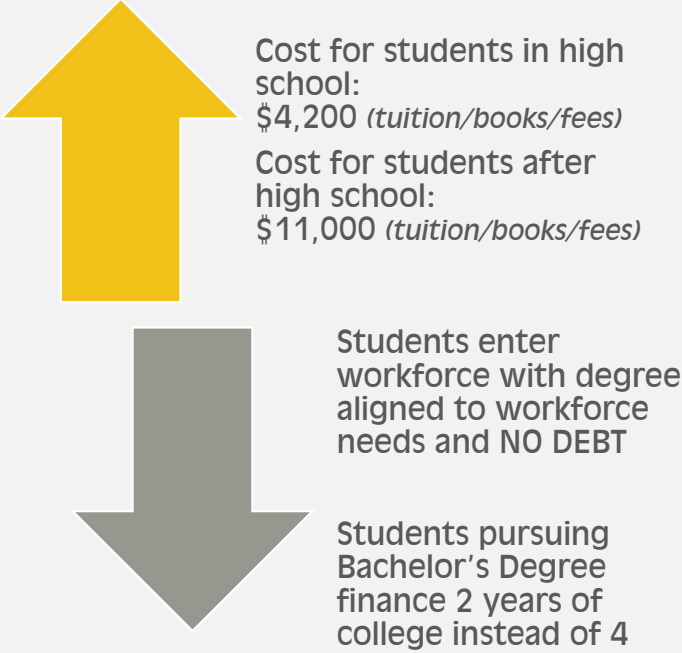
Information Technology

Early College Career Academy

Today at iLEAD Academy



| Dual Credit Hours Earned by Current iLEAD Students | | | |
|--|----------|-------------------|---------|
| Grade | Students | Dual Credit Hours | Average |
| 9 | 33 | 139 | 4 |
| 10 | 27 | 278 | 10 |
| 11 | 33 | 664 | 30 |
| TOTAL | 93 | 1,081 | |



Slide 11

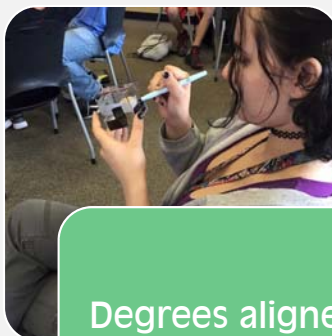
MS7

Molly Sullivan, 2/26/2018

Associate's Degree to Success in Work & Life



Students choose to pursue Associate of Science or Associate of Applied Science

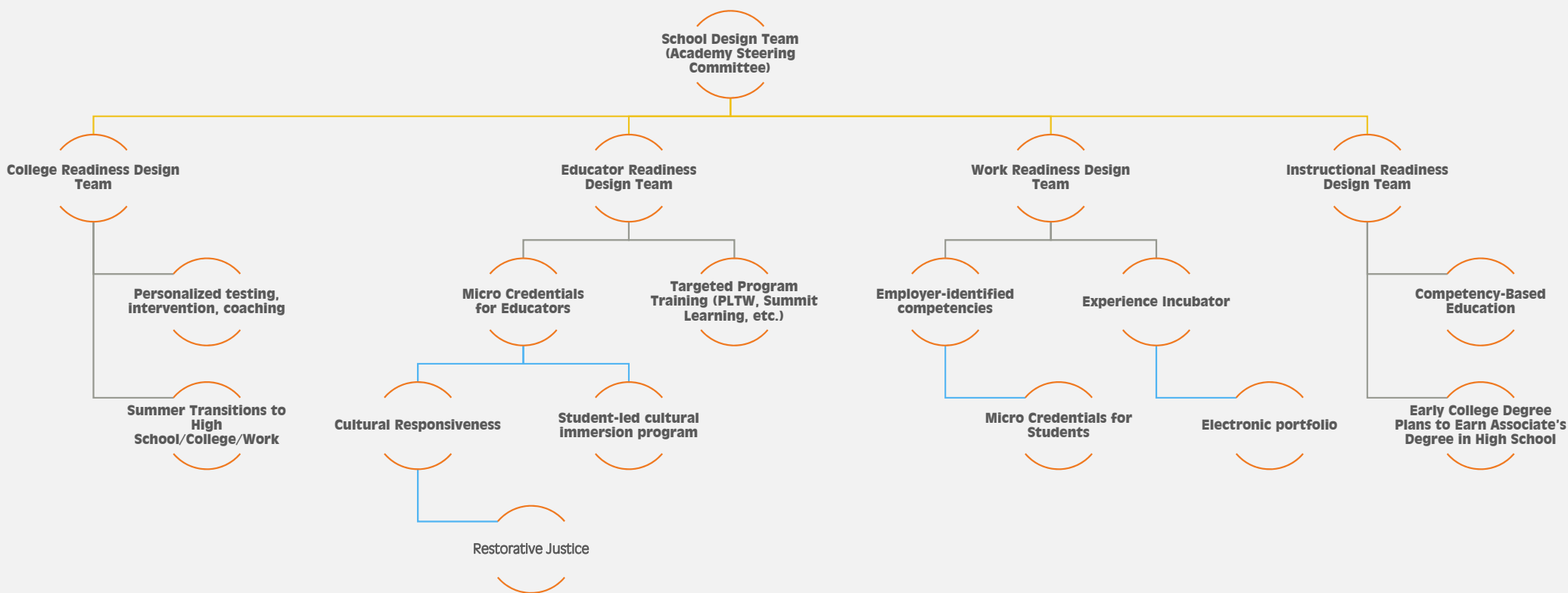


Degrees aligned to regional high-demand, high-wage jobs



Seamless transitions mapped to Bachelor's in Engineering, Information Technology, Nursing

How will iLEAD – AE be designed?



Grant Opportunities

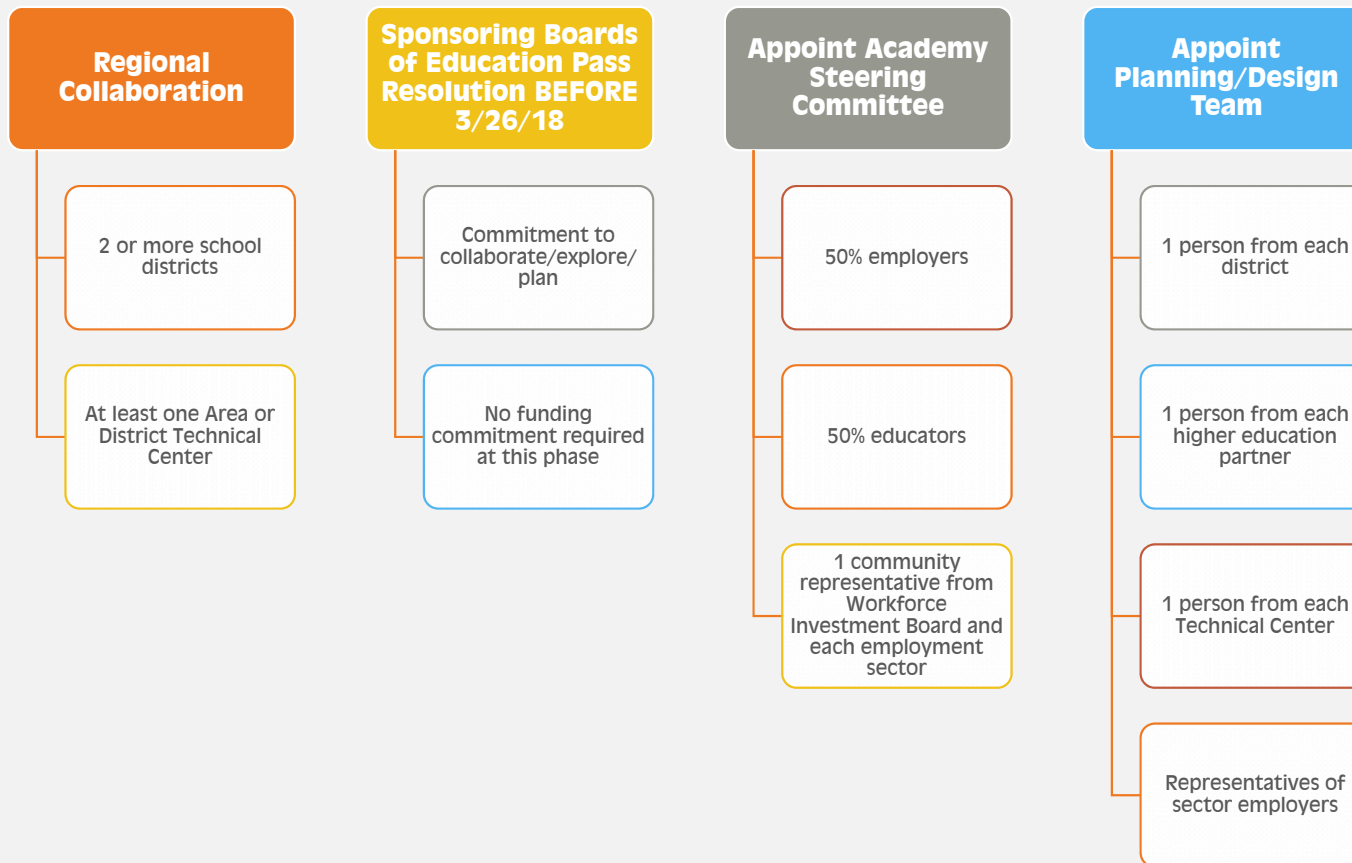
New Schools Venture Fund

- \$200,000 awards
- Second round application submitted 2/9/18
- Awards made in early April 2018
- Funds staff, planning efforts, meetings, materials, consultants

New Skills for Youth

- \$115,000 awards
- Applications due 3/26/18
- Awards made in late April 2018
- Funds staff, planning, travel

New Skills for Youth Grant Requirements



iLEAD – AE School Design Budget

| Revenue for Planning & Design | | |
|---|-----------|--|
| New Schools Venture Fund | | \$200,000 |
| New Skills for Youth | | \$115,000 |
| Four Sponsor School Districts' Contributions | | \$400,000 total - (\$100,000 each) <i>*Could be reduced by fundraising for equipment/furnishings</i> |
| School Director Salary & Fringe for 2018 – 2019 School Year (planning year) | \$100,000 | |
| Equipping/Furnishing Building | \$250,000 | |
| Rent (January – July 2019) | \$50,000 | |
| Total | \$400,000 | |
| Anticipated Annual Operating Expense Per District - \$120,000 per year | | |
| TOTAL: | | \$715,000 |

iLEAD – AE School Design Budget

LEARNING

Study Visits



- Experience Institute/Chicago ☐
- Denver Public Schools/Cultural Diversity ☐
- Montgomery County, MD/Cultural Responsiveness ☐
- Texas Early Colleges ☐
- NYC iSchool/Community Challenge PBL ☐
- Other conferences/meetings as identified ☐

Educator Training & Credentials



- Targeted Program Training (Project Lead the Way, Summit Learning, etc.) ☐
- Cultural Responsiveness Micro Credential ☐
- Restorative Justice Micro Credential ☐
- Competency-based education ☐

OUTCOMES

Student Academic Support



- ☐ Diagnostic testing, personalized intervention, coaching system grades 6 - 12
- ☐ Summer transition programs from grades 8 to 9 and 12 to workforce and/or college
- ☐ Student-led cultural immersion program
- ☐ School Director for planning year
- ☐ Facility for 6 months in 2019
- ☐ Furnishings/equipment

Work Readiness



- ☐ Employer-identified competencies for Automation Economy (AE)
- ☐ Student Micro Credentials to demonstrate AE competencies
- ☐ Experience Incubator

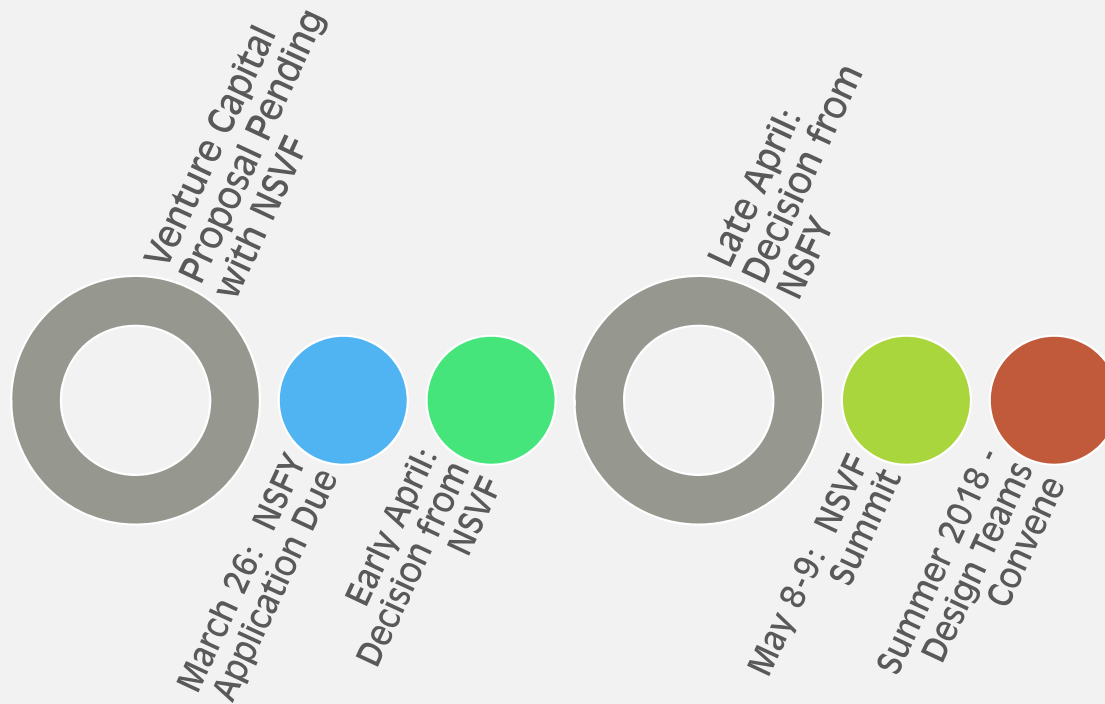
Current iLEAD Operational Structure

- Five sponsor districts make annual contributions of an equal amount
- Amount not tied to SEEK or other funding formulas
- OVEC collects funds/administers the school's budget/hires school staff/manages operations. OVEC fee is \$30,000 per year
- Does not include transportation costs; districts utilize buses already in use for CTE transportation
- For first two years, districts contributed \$75K per district/per year. Enrollment in Year One – up to 45 students; Year Two – up to 90 students
- Increased contribution to \$95K per year for years three and four. Enrollment in Year Three – up to 135 students; Year Four – up to 180 students
- Operating budget of \$525,000 includes \$475,000 from 5 sponsor districts and \$50,000 annually from R.C. Durr Foundation for 1:1 technology
- iLEAD will be at full capacity next year (grades 9 -12) with approximately 145 students (accounting for attrition of approximately 8 students per year)
- Per pupil cost at full capacity approximately \$3,620 per student plus transportation

Projected Operating Budget – iLEAD AE

| Anticipated Annual Operating Expenses | |
|--|------------------|
| Personnel | \$275,000 |
| Facility/Rent/Maintenance | \$100,000 |
| Staff Training, Development | \$10,000 |
| Instructional Support (Field Trips, PBL Consumables, Competitions) | \$25,000 |
| Technology (1:1 laptops for 4 grades (can phase in); mi-fi cards for home internet access, etc.) | \$60,000 |
| Operations (Demonstration Nights, meeting expenses, etc.) | \$10,000 |
| TOTAL | \$480,000 |
| Per sponsor district (4 districts) - \$120,000 per year | |

iLEAD – AE Timeline



For More Information

Alicia J. Sells
Director of Innovation
Ohio Valley Educational Cooperative

asells@ovec.org
502-475-1245

