

# **Henderson County Schools**

1805 Second Street, Henderson, Kentucky 42420  
(270) 831-5000 Fax: (270) 831-5009  
www.henderson.kyschools.us

---



To: Lisa Baird, Wesley Smith, Sally Sugg, Michael Waller and Tracey Williams

From: Marganna Stanley

Date: March 19, 2018

Re: Changes to Spottsville Attendance Zone Areas

Due to changes in elementary enrollment numbers over the past 10 years, it has caused overpopulation in some of our elementary schools to occur. District personnel have been examining current school boundary lines in anticipation of the 2018-19 school year.

Please consider the recommendation to move the school boundary for Spottsville Elementary from Saddlebrook Apartments west to Pebble Creek Drive (Greenleaf Apartments, Pebble Creek Apartments and Thornbrook Place) and to include the north side and south side of Wathen Lane, including Braxton Park. In addition, this request will include the current area from the Green River north on Highway 351 (Zion Road) Mile Marker 5. (Maps are included in this memo.)

These changes would involve the shifting of 82 current families from East Heights Elementary to Spottsville Elementary and 26 families from Bend Gate Elementary to Spottsville Elementary.

A student may remain at his/her current school (EHS or BGT) *if* the student will be in grade 5. If the student is a sibling of a student in grade 5, s/he may remain for the 2018-2019 school year as well, as long as the parent/guardian provides transportation to and from school for the student(s).

The following information was taken into consideration for this recommendation:

- Providing a high-quality learning environment and equitable opportunities for students in all schools;
- Improving a diverse balance of students in all schools;
- Accommodating current and future student growth in all schools; and
- Establishing a more efficient bus transportation system in order to minimize student transportation time for all students.

An informational meeting on Thursday, March 29, at the Henderson County Schools Professional Development Center (631 N. Green Street) from 5:30-6:30 p.m. At that time, boundary maps, bus routes, and additional information will be shared with families. Principal of Spottsville Elementary School, Sarah Estabrook, will be present to meet with families.

# Henderson County Schools

1805 Second Street, Henderson, Kentucky 42420

(270) 831-5000 Fax: (270) 831-5009

www.henderson.kyschools.us



---

March 20, 2018

Dear Henderson County Schools Family,

Due to changes in elementary enrollment numbers over the past 10 years, it has caused overpopulation in some of our elementary schools to occur. District personnel have been examining current school boundary lines in anticipation of the 2018-19 school year. You are receiving this communication because your family will be impacted.

There will be changes to current boundary lines for East Heights Elementary School, Spottsville Elementary School, and Bend Gate Elementary School. New school boundaries will change the status of a student's home school if they are in grades K-5.

Redistricting will only affect the following schools:

- Bend Gate Elementary School (BGT)
- East Heights Elementary School (EHS)
- Spottsville Elementary School (SPT)

**During the 2018-2019 school year, your student will attend Spottsville Elementary School.** A student may remain at his/her current school (EHS or BGT) *if* the student will be in grade 5. If the student is a sibling of a student in grade 5, s/he may remain for the 2018-2019 school year as well, as long as the parent/guardian provides transportation to and from school for the student(s).

The following information was taken into consideration before the school board voted to make any changes to the current boundary lines:

- Providing a high-quality learning environment and equitable opportunities for students in all schools;
- Improving a diverse balance of students in all schools;
- Accommodating current and future student growth in all schools; and
- Establishing a more efficient bus transportation system in order to minimize student transportation time for all students.

We have scheduled an informational meeting on Thursday, March 29, at the Henderson County Schools Professional Development Center (631 N. Green Street) from 5:30-6:30 p.m. At that time, boundary maps, bus routes, and additional information will be shared with families. Principal of Spottsville Elementary School, Sarah Estabrook, will be present to meet with families. As always, feel free to contact Director of Pupil Personnel Kasey Farmer at 270-854-0141 or Assistant Superintendent, Steve Steiner at 270-831-5000, if you have any additional questions.

Thank you,

Marganna Stanley  
Superintendent  
Henderson County Schools

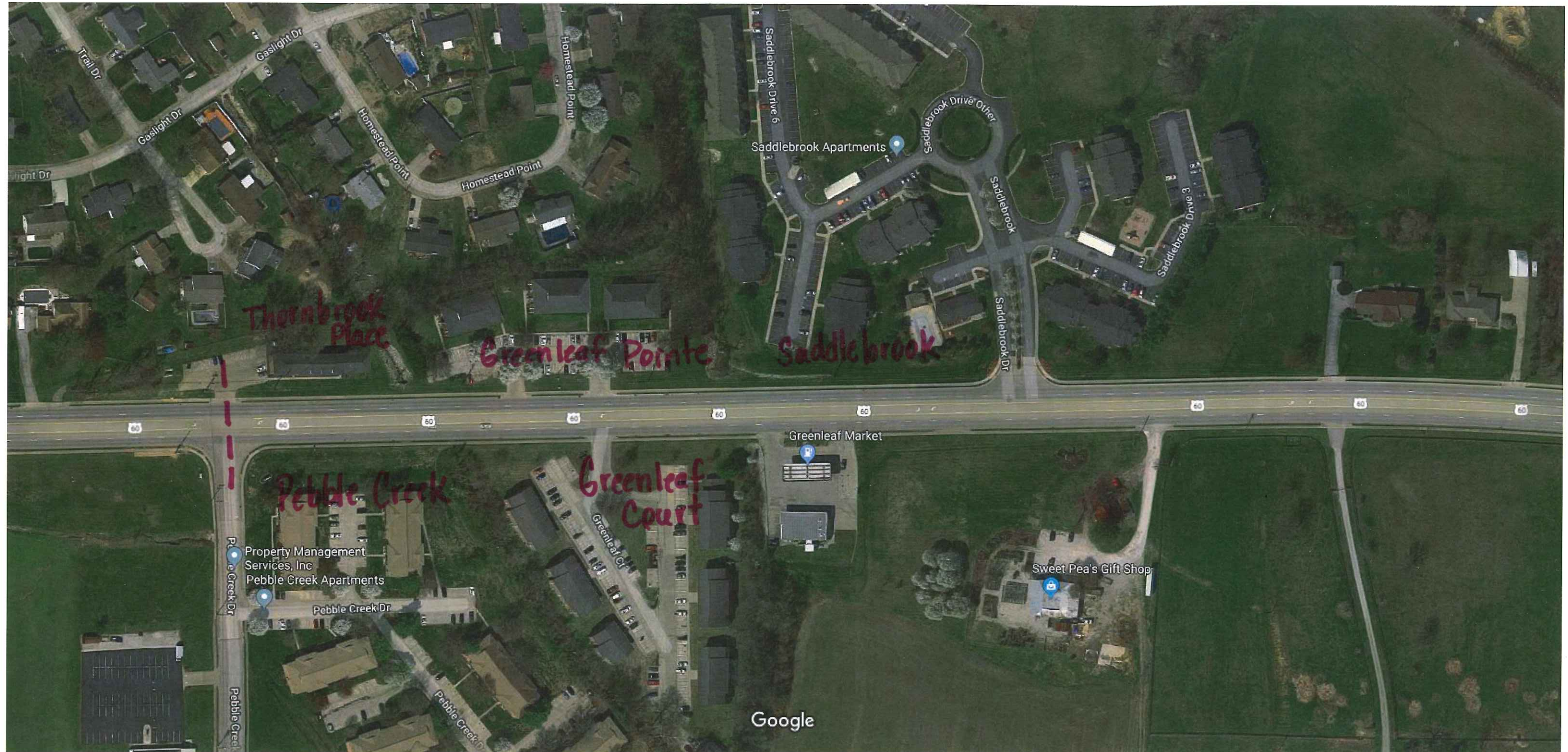
The mission of Henderson County Schools is to provide extraordinary  
educational opportunities for every student.

Equal Educational and Employment Institution

## New Demographics

School	Enrollment		IEP's		Special Units	F & R		Certified Evaluations
East Heights	537	455	80	69	1	59%	59%	20
Bend Gate	455	429	102	100	2	65%	65%	20
South Heights	521	521	102	102	2	86%	86%	24
Spottsville	404	536	68	80	1 (2)	51%	51%	24





- 1) West to Pebble Creek Dr. (Hwy 60)
- 2) Include all Wathen Ln & Braxton Park





From: Green River - North on 351  
to Mile Marker 5