

NKY TALENT STRATEGY (CRADLE TO CAREERS)

OVERSIGHT COMMITTEE

Function: goal setting policy direction, overall guidance



Chamber of
Commerce



Northern Kentucky
Workforce
Investment
BOARD



OPERATING ENTITY

Function: daily operation, tracking, reporting, connecting

NKY Chamber - Managing Director (Chamber VP of Workforce)

Tri-ED - Program Associate

PCW - Program Associate

NKY WIB - Program Associate

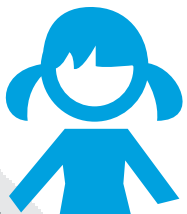
NKEC/NKCES - Program Associate

CVG - Program Associate

Gateway - Program Associate

Red=dedicated funding needed

Function: Implementation= Outcomes



Kindergarten Readiness

LEAD ORGANIZATION

Success by 6

LONG-TERM GOAL

85% of children prepared for kindergarten by 2020



College and Career Readiness

LEAD ORGANIZATION

NKEC/NKCES

LONG-TERM GOAL

85% youth graduate from high school college or career ready



Adult Career Readiness and Life Long Learning

LEAD ORGANIZATION

KY Career Center

LONG-TERM GOAL

45% of adults will have an Associates degree or higher, 90% of workforce gainfully employed



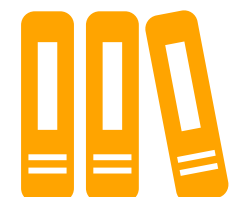
Talent Retention and Attraction

LEAD ORGANIZATION

NKY Chamber

LONG-TERM GOAL

X% net migration / reduce flight by X%



Employer Policies and Practices

LEAD ORGANIZATION

PCW

LONG-TERM GOAL

Job growth (% or #)
Wage growth (% or #)
Job retention (% or #)

ADVOCACY

ADVANCED MANUFACTURING | IT | ADVANCED LOGISTICS | HEALTH SCIENCES | FINANCIAL SERVICES | CONSTRUCTION

The NKY Talent Strategy is a comprehensive, holistic approach by the NKY region's key workforce partners who are committed to driving outcomes for talent pipeline management that will maintain and grow a strong economy and ensure that NKY will attract future business because of a strategic workforce effort, unique to the commonwealth.

The NKY WIB will coordinate meetings and needs of the oversight committee. the NKY Chamber will be responsible for leading the overall model, with the committed support of partners listed on the reverse, along with other partners as identified in the model's work plan.

Positions dedicated to this NKY Talent Strategy effort will be co-located in a space designated on the 3rd floor of the NKY Chamber Building
- adjacent to the Chamber's and Tri-ED's offices