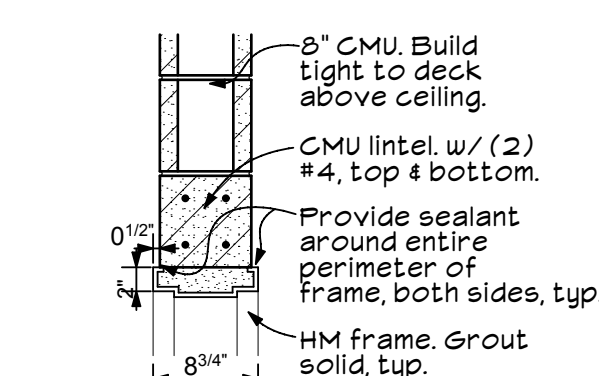


General Notes Regarding Doors & Frames (These pertain to both buildings):

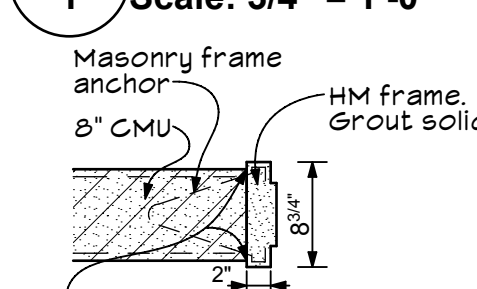
1. Hollow metal frames to be grouted solid.
2. All field welds to be ground smooth & painted to match factory condition.
3. All glazing stops & anchors by HM manufacturer.
4. Provide 1/4" thick tempered glass @ all interior doors and 1" insulating glass at exterior doors and frames - inner pane 1/4" clear, exterior pane 1/4" clear. All glass is tempered.
5. Provide sealant @ perimeter of each frame, each side.
6. Field verify all rough openings prior to ordering or fabricating doors & frames.
7. Paint all hardware (screw heads, glazing stops, etc.) to match frame color.
8. Coordinate door undercuts w/ thresholds & floor finish thicknesses prior to ordering doors so that they are correct height to properly contact threshold & to clear floor finish.
9. Doors shall be readily operable from the egress side without the use of a key or special knowledge or effort.
10. At all post installed HM frame anchors, countersink, fill dimples w/ body filler, sand flush so no evidence of anchor, & paint, typ.



HM Frame in 8" CMU

1 Wall Head Detail

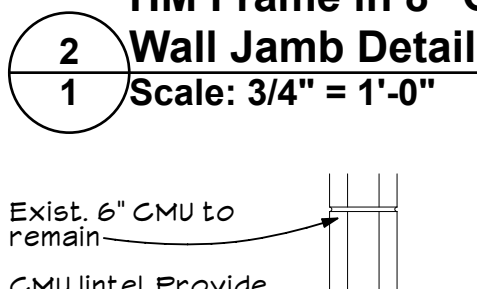
Scale: 3/4" = 1'-0"



HM Frame in 8" CMU

2 Wall Jamb Detail

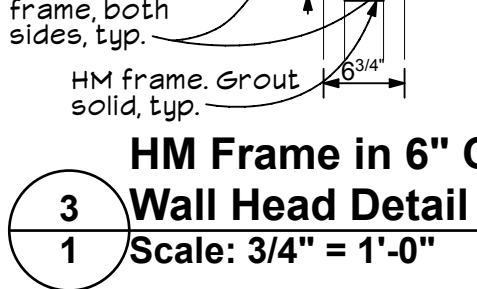
Scale: 3/4" = 1'-0"



HM Frame in 6" CMU

3 Wall Head Detail

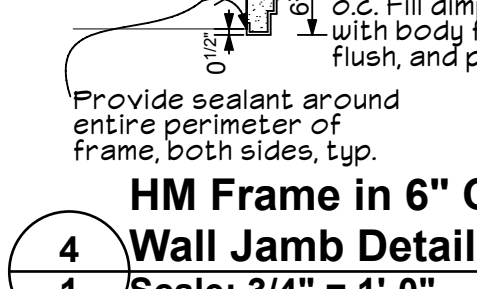
Scale: 3/4" = 1'-0"



HM Frame in 6" CMU

4 Wall Jamb Detail

Scale: 3/4" = 1'-0"



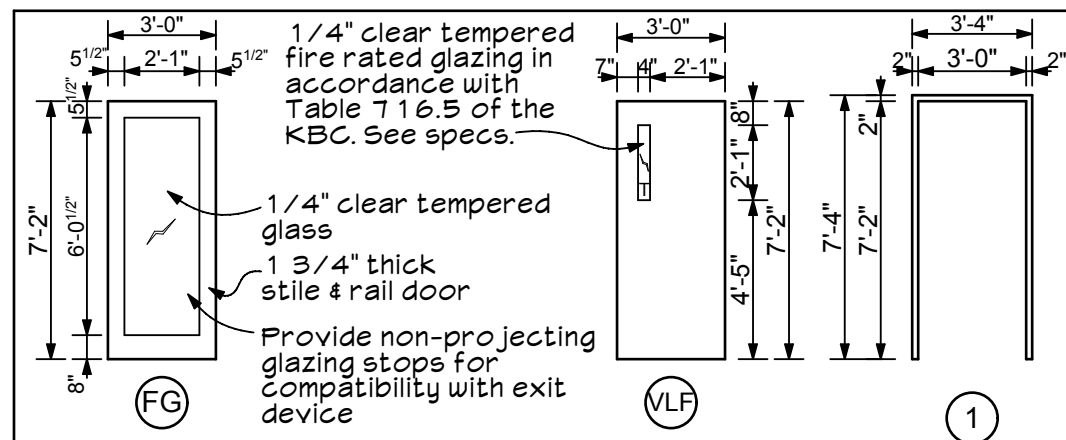
CMU Wall

5 Intersection Detail

Scale: 3/4" = 1'-0"

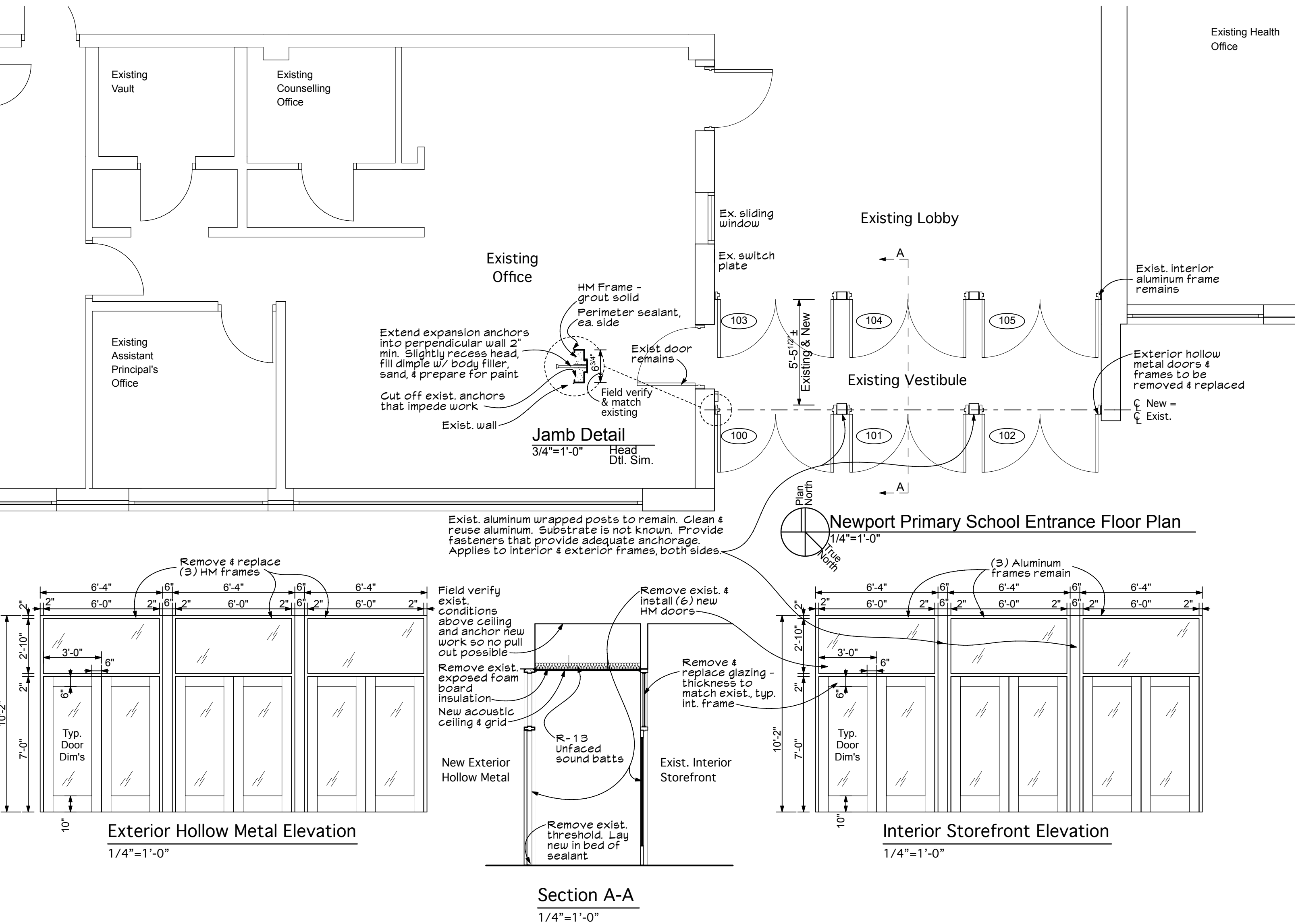
Newport Intermediate School Entrance Floor Plan
1/4"=1'-0"

Door Schedule (Newport Intermediate School)										
Door No.	Door	Mat.	Type	Mat.	Type	Head	Jamb	Sill	Label	HRDW
1	3'-0" x 7'-2" x 1 3/4"	HM	FG	HM	1	3/1	4/1	-	-	-
2	3'-0" x 7'-2" x 1 3/4"	HM	FG	HM	1	1/1	2/1	-	-	-
3	3'-0" x 7'-2" x 1 3/4"	HM	VLF	HM	1	-	-	-	90-min	-



Door Schedule (Newport Primary School)										
Door No.	Door	Mat.	Type	Mat.	Type	Head	Jamb	Sill	Label	HRDW
100	(2) 3'-0" x 7'-0" x 1 3/4"	HM	HM	See Plan	See Plan	See Plan	See Plan	See Plan	-	-
101	(2) 3'-0" x 7'-0" x 1 3/4"	HM	HM	See Plan	See Plan	See Plan	See Plan	See Plan	-	-
102	(2) 3'-0" x 7'-0" x 1 3/4"	HM	HM	See Plan	See Plan	See Plan	See Plan	See Plan	-	-
103	(2) 3'-0" x 7'-0" x 1 3/4"	HM	HM	See Plan	See Plan	See Plan	See Plan	See Plan	-	-
104	(2) 3'-0" x 7'-0" x 1 3/4"	HM	HM	See Plan	See Plan	See Plan	See Plan	See Plan	-	-
105	(2) 3'-0" x 7'-0" x 1 3/4"	HM	HM	See Plan	See Plan	See Plan	See Plan	See Plan	-	-

Door Schedule Abbreviations										
FG	Full Glass	HM	Hollow Metal	VLF	Fire Rated Vision Light					



Exterior Hollow Metal Elevation
1/4"=1'-0"

Interior Storefront Elevation
1/4"=1'-0"

Section A-A
1/4"=1'-0"

