



Communication & Technology

2573 Ritchie Street
Crescent Springs, KY 41017

Phone # (859) 331-1086

www.avantct.com

Estimate

Date	Rep	Estimate #
10/17/2017	BP	5815
PO No.		Terms
		Net 30
Project		
5815 NEW BUS GARAGE		

Name / Address
Gallatin County Schools 75 Boardwalk Warsaw, KY 41095

Ship To
Gallatin County Schools 75 Boardwalk Warsaw, KY 41095

Qty	Item	Description
		QUOTE IS FOR THE CCTV UPGRADE AT THE NEW BUS GARAGE. QUOTE INCLUDES CAMERAS, LICENSE FOR SOFTWARE AND LABOR TO INSTALL ALL CAMERAS ARE EITHER 3 OR 5 MP UNITS THAT OFFER HD QUALITY VIDEO. A TOTAL OF 5 NEW CAMERAS WILL BE ADDED BASED ON WALK THRU. (4 OUTDOOR AND 1 INDOOR 360) THE FACILITY IS RESPONSIBLE FOR COMPUTERS FOR REMOTE VIEWING AND NETWORK PORTS.(POE)
5	EVIP01	SINGLE IP CAMERA LICENSE EXPANSION
1	ADC1825F312	5MP INDOOR 360 CAMERA
4	P1427LE	5 megapixel resolution at 12 fps,Day & Night functionality,Built-in IR Leeds and Optimized,Edge storage,H.264 and Motion JPEG,Ease of installation,I/O support,Corridor format
1	103	Service Data Drop
1	Avant-Misc. Hardware	Misc. Hardware
16	Avant-Field Labor	Installation of cable and field devices.
6	Avant-Programming Labor	Programming Labor

1. ALL QUOTES ARE VALID FOR 30 DAYS.
2. A STANDARD ONE YEAR WARRANTY IS INCLUDE.
3. ALL EQUIPMENT WARRANTIES ARE BASED ON MANUFACTURE GUIDELINES.
4. LABOR WARRANTY DOES NOT INCLUDE CALLS FOR SOFTWARE, FIRMWARE OR OPERATING SYSTEM UPDATES. ASK ABOUT OUR PROFESSIONAL WARRANTY PROGRAMS.

Subtotal	\$5,995.00
Sales Tax (6.0%)	\$0.00
Total	\$5,995.00

AXIS P1427-LE Network Camera

Compact and cost-effective surveillance with OptimizedIR

The AXIS P1427-LE bullet camera provides excellent image quality in 5 megapixel resolution. The camera features a varifocal P-iris lens and Axis' OptimizedIR, a power-efficient IR LED technology providing automatic illumination of a scene in complete darkness. P-iris control provides optimal depth of field, resolution, image contrast and clarity. AXIS P1427-LE supports Axis' Corridor Format for vertically oriented video streams. The pixel counter assures that the required pixel resolution is met. Remote zoom and focus eliminate the need for hands-on fine tuning. The input/output port can be used for notification to an alarm panel or control of a relay. The outdoor-ready camera comes with an adjustable weather shield.

- > 5 megapixel resolution at 12 fps
- > Day & Night functionality
- > Built-in IR LEDs and OptimizedIR
- > Ease of installation
- > I/O support



AXIS P1427-LE Network Camera

Camera		External output activation Video recording to edge storage Pre- and post-alarm video buffering IR illumination
Image sensor	Progressive scan CMOS 1/3.2"	
Lens	2.8–9.8 mm, F1.6 Horizontal field of view 27°–92° Varifocal, Autofocus, Remote focus and zoom, P-Iris control, IR corrected	
Day and night	Automatically removable infrared-cut filter	
Minimum illumination	Color: 0.35 lux at F1.6 B/W: 0.07 lux at F1.6 0 lux with IR illumination on	
Shutter time	1/28000 s to 2 s with power line frequency 50 Hz 1/33500 s to 2 s with power line frequency 60 Hz	
Video		
Video compression	H.264 High, Main and Baseline profiles (MPEG-4 Part 10/AVC) Motion JPEG	
Resolutions	2592x1944 HDTV 1080p to 160x90 Meets relevant parts of SMPTE 274M (HDTV 1080p)	
Frame rate	Resolutions up to 1920x1080 (HDTV 1080p) and 1600x1200: Up to 25/30 fps (50/60 Hz) 3 MP capture mode: Up to 16/20 fps (50/60 Hz) 5 MP capture mode: Up to 12,5/12 fps (50/60 Hz)	
Video streaming	Multiple, individually configurable streams in H.264 and Motion JPEG Controllable frame rate and bandwidth VBR/MBR H.264	
Image settings	Manual shutter time, Compression, Color, Brightness, Sharpness, White balance, Exposure control, Exposure zones, Fine tuning of behavior at low light, Text and image overlay, Privacy masks, IR illumination Wide Dynamic Range – Dynamic Contrast Rotation: 0°, 90°, 180°, 270°, including Corridor Format	
Pan/Tilt/Zoom	Digital PTZ	
Network		
Security	Password protection, IP address filtering, HTTPS ^a encryption, IEEE 802.1X ^a network access control, Digest authentication, User access log	
Supported protocols	IPv4/v6, HTTP, HTTPS ^a , SSL/TLS ^a , QoS Layer 3 DiffServ, FTP, CIFS/SMB, SMTP, Bonjour, UPnP™, SNMP v1/v2c/v3 (MIB-II), DNS, DynDNS, NTP, RTSP, RTP, SFTP, TCP, UDP, IGMP, RTCP, ICMP, DHCP, ARP, SOCKS, SSH	
System integration		
Application Programming Interface	Open API for software integration, including VAPIX® and AXIS Camera Application Platform; specifications at www.axis.com AXIS Video Hosting System (AVHS) with One-Click Connection ONVIF Profile S and ONVIF Profile G, specification at www.onvif.org	
Analytics	AXIS Video Motion Detection 4 Support for AXIS Camera Application Platform enabling installation of third-party applications, see www.axis.com/acap	
Event triggers	Analytics Detectors: Day/Night Mode, Live Stream Accessed, Tampering Hardware: Network, Temperature Input Signal: Manual Trigger, Virtual Inputs Storage: Disruption, Recording System: System Ready Time: Use Schedule, Recurrences	
Event actions	File upload: FTP, SFTP, JFTP, IHTTPS network share and email Notification: email, HTTP, HTTPS and TCP and SNMP trap	
Built-in installation aids	Pixel counter, Remote zoom (3.5x optical), Remote focus	
Data streaming	Event data	
General		
Casing	IP66- and NEMA 4X-rated casing (polyester polycarbonate blend)	
Sustainability	PVC free	
Memory	512 MB RAM, 128 MB Flash	
Power	Power over Ethernet IEEE 802.3af/802.3at Type 1 Class 3 Max 12.8 W	
Connectors	RJ45 10BASE-T/100BASE-TX PoE I/O: 4-pin terminal block for 1 alarm input and 1 output	
IR illumination	Optimized IR, highly efficient LEDs with adjustable intensity and angle of illumination. Range up to 15 m (50 ft)	
Storage	Support for microSD/microSDHC/microSDXC card SD card encryption Support for recording to network-attached storage (NAS) For SD card and NAS recommendations see www.axis.com	
Operating conditions	-30 °C to 50 °C (-22 °F to 122 °F) Humidity 10–100% RH (condensing)	
Storage conditions	-40 °C to 65 °C (-40 °F to 149 °F)	
Approvals	EN 55022 Class A, EN 61000-3-2, EN 61000-3-3, EN 61000-6-1, EN 61000-6-2, EN 55024, FCC Part 15 Subpart B Class A, ICES-003 Class A, VCCI Class A, RCM AS/NZS CISPR 22 Class A, KCC KN22 Class B, KN24, IEC/EN/UL 60950-1, IEC/EN/UL 60950-22, IEC/EN 60529 IP66, NEMA 250 type 4X, IEC 60068-2-1, IEC 60068-2-2, IEC 60068-2-6, IEC 60068-2-27	
Weight	With weather shield: 871 g (1.92 lb)	
Dimensions	Ø132 x 260 mm (Ø5 3/16 x 10 1/4 in)	
Included accessories	Mounting bracket, Drill template, Installation Guide, Windows decoder 1-user license AXIS Weather Shield L	
Optional accessories	AXIS T94F01M J-Box/Gang Box Plate AXIS T91A47 Pole Mount AXIS T94P01B Corner Bracket AXIS T94F01P Conduit Back Box Axis PoE Midspans For more accessories, see www.axis.com	
Video management software	AXIS Companion, AXIS Camera Station, Video management software from Axis' Application Development Partners available on www.axis.com/support/downloads	
Languages	English, German, French, Spanish, Italian, Russian, Simplified Chinese, Japanese, Korean, Portuguese, Traditional Chinese	
Warranty	Axis 3-year warranty and AXIS Extended Warranty option, see www.axis.com/warranty	

a. This product includes software developed by the OpenSSL Project for use in the OpenSSL Toolkit (<http://www.openssl.org/>), and cryptographic software written by Eric Young (ey@cryptsoft.com).

Environmental responsibility:

www.axis.com/environmental-responsibility

Illustra 825 Fisheye Camera

Features That Make A Difference:

- 5MP imager for super high quality images
- 360°/180° panoramic views of wide areas
- Single or multiple fixed views for forensic investigations
- Onboard dewarping for distortion-free images
- ePTZ capabilities for ultra smooth transition between pan, tilt and zoom
- Efficient bandwidth and video storage to reduce costs
- Onboard SD card recording and storage
- Sleek, discreet design
- Quick and easy installation
- Vandal-resistant model available
- ONVIF 2.4 profile S compliant



Non Vandal-Resistant

The Illustra 825 Fisheye Camera with a 5MP sensor provides a 180° panoramic view when mounted on the wall, or a 360° bird's eye view when mounted on a ceiling. The lens captures an ultra-wide field of view looking in all directions in real-time. The camera's onboard dewarping technology provides distortion corrected video streaming of 180°, 360° panoramic 16:9 or active 4:3 views.

The Illustra 825 Fisheye is ideal for applications such as retail stores, expansive indoor parking areas, casinos, building lobbies, elevator banks, corridor intersections and university lecture halls where situational surveillance covering a wide area can be achieved using a single camera. The Illustra 825 Fisheye Camera is always looking in all directions to capture all activity. The camera produces single or multiple fixed views should forensic investigations be required.



Vandal-Resistant

The ePTZ movements of the Illustra 825 Fisheye Camera are ultra smooth creating even transition between pan, tilt and zoom movements. Multiple streams of H.264 and MJPEG video compression provide excellent image clarity while efficiently managing bandwidth to reduce storage costs. In addition, the camera's built-in micro SDHC card slot enables several days of recording to be stored locally on a memory card.

The Illustra 825 Fisheye Camera's sleek, discreet design allows it to blend into any environment for inconspicuous surveillance. The vandal-resistant model protects the camera against external impacts that might occur if an intruder was attempting to take the camera out of operation. It's extremely easy to install and simple to set up. A built-in web server provides easy configuration. In addition, when used with the Illustra Connect software tool, discovery, snapshot, configuration, IP address assignments, diagnostics and firmware upgrades take no time at all.

Specifications

Camera

Video Compression	H.264/MJPEG
Max Frame Rate	14ips (all resolutions)
ONVIF Compliant	ONVIF 2.4 profile S
Resolutions	
Fisheye	1936x1936
Active Image 1-4	960x540
	800x450
	640x360
	480x270
	320x180
Wall/Ceiling Panorama	1920x1080
	1600x900
	1280x720
	1024x576
	960x540
	800x450
	640x360
	480x270
	320x180
Imager	Type 1/2.5" 5MP CMOS sensor
Minimum Illumination	1.2 lux
Shutter	AES (Automatic Electronic Shutter)
Lens Focal Length	1.37mm
Aperture	2.0
Field of View	183°
ePTZ	Digital pan/tilt/zoom, presets, sequences, patterns, scans
White Balance	Auto Normal, Auto Wide, and Manual
Alarms	Motion detection
Wide Dynamic Range	82dB
Privacy Zones	Yes, 4
Menu Languages	English (default), Arabic, Czech, Danish, German, Spanish, French, Hungarian, Italian, Korean, Japanese, Dutch, Polish, Portuguese, Swedish, Turkish, Chinese Traditional, Chinese Simplified

Network

Ethernet	10/100Base-T
Supported Protocols	TCP/IP, IPv4, IPv6, TCP, UDP, HTTP, FTP, DHCP, WS-Discovery, DNS, DDNS, RTP, TLS, Unicast, Multicast, NTP, SMTP, WS-Security

Configuration Management

Onboard Storage

Card Type	Micro SDHC up to 32GB
-----------	-----------------------

Electrical

Power	PoE 802.3af Class 3
Power Consumption	<12.95W

Physical

Body Diameter	149 mm (5.85 in)
---------------	------------------

Height

Vandal-Resistant	74 mm (2.91 in)
Non Vandal-Resistant	60 mm (2.36 in)

Weight

Vandal-Resistant	0.750 kg
Non Vandal-Resistant	0.730 kg

Color	White (RAL 9003)
-------	------------------

Environmental

Operating Temperature	-10°C to 45°C (14°F to 113°F)
Humidity	95% non-condensing

Regulatory

Emissions	FCC CFR 47 Part 15 Class A, AS/NZS CISPR22 Class A, ICES-003/NMB-003 Class A, EN 55022
-----------	--

Immunity	EN50130-4, EN 61000-6-1, IEC 62599-2, EN55024
----------	---

Safety	UL 60950-1, CSA-C22.2 No. 60950, EN 60950-1, IEC 60950-1
--------	--

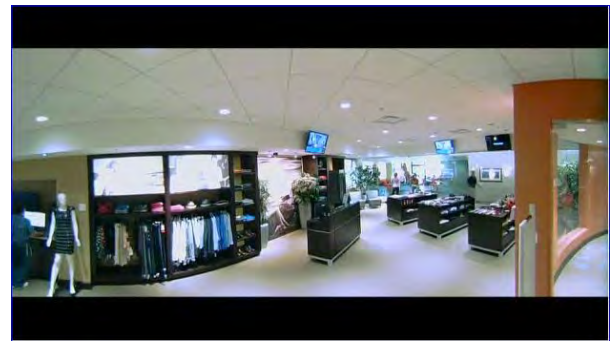
Environmental	RoHS, EU Directive 2011/65/EU WEEE, EU Directive 2002/96/EC
---------------	---

Impact Rating	IK10
---------------	------

Ordering Information

Model Numbers	Description
Cameras*	
ADCi825-F311	Illustra 825 Fisheye, 5MP, vandal-resistant
ADCi825-F312	Illustra 825 Fisheye, 5MP, non vandal-resistant
Mounts	
ADCiM6WALLWK	Illustra 600 Indoor/Outdoor Wall Mount
ADCi6DPCAOW	Illustra 600 Outdoor Pendant Cap

* Includes double gang box/mount adapter plate



Related Products



exacqVision
NVR

Approvals



Driving network video through global standardization

www.exacq.com/illustra