

2016-17 State Assessment Results

Rhonda Sims, Associate Commissioner
Office of Assessment and Accountability

Jennifer Stafford, Director
Division of Assessment Support

Kevin Hill, Director
Division of Accountability Data and Analysis

Kentucky Board of Education
October 4, 2017



Overview

Transition year between old accountability system under NCLB/waivers and new system under ESSA and Senate Bill 1 (2017)

- ▶ **2016-17 state assessments results reported**
 - Local accountability and public transparency continue
- ▶ **2017-18 transition period continues**
 - New system modeled, as possible, and data reported publicly in a dashboard
- ▶ **2018-19 school year plan**
 - New accountability system begins, first reporting fall 2019



2017 Changes to Public Reporting



DATA RELEASED

DATA **NOT** RELEASED

Performance data for Achievement, Gap, Growth (EL/MS), College and Career Readiness (HS), and Graduation Rate (HS)

A single overall score, classifications or labels (no rankings)

2016-17 Program Review scores, if submitted and districts approved school results

Component scores for Next-Generation Learners or Instructional Programs (Program Reviews)

2016-17 Assessment Changes

- ▶ Science scores for regular education students are not available for elementary and middle. Students participated in field test of new science test.
- ▶ SB 1 requires one test of on-demand writing per grade level span. Tests were eliminated at grades 6 and 10, but continued at grades 5, 8 and 11. *Scores at middle and high schools are not comparable with previous years.*
- ▶ No language mechanics scores at high school, due to ACT eliminating reporting of English subscores.
- ▶ Growth not reported at high school, due to ACT Plan being discontinued by the vendor.
- ▶ Limited use of ACT Compass in CCR reporting, due to ACT discontinuing the test.



2016-17 Assessment Data Reported

- ▶ **K-PREP (Kentucky Performance Rating for Educational Progress)**
 - Scores and performance levels (NAPD)
 - ✓ Reading (Grades 3-8)
 - ✓ Mathematics (Grades 3-8)
 - ✓ Science (Alternate Assessment)
 - ✓ Social Studies (Grades 5, 8)
 - ✓ Language Mechanics (Grades 4, 6)
 - ✓ On-demand Writing (Grades 5, 8, 11)
- ▶ **The ACT (Grade 11)**
 - Scores and benchmarks
- ▶ **End-of-Course**
 - English II
 - Biology
 - Algebra II
 - U.S. History
- ▶ **Alternate Assessment**
- ▶ **Advanced Placement**





Kentucky Department of Education

Our Children, Our Commonwealth

School Report Card



REPORT CARD
FEEDBACK

Welcome to Kentucky's School Report Card.

Each year, School and District Report Cards are posted on the Kentucky Department of Education's (KDE's) website. Not to be confused with student report cards, these Report Cards provide information about each school and district, including test performance, teacher qualifications, student safety, awards, parent involvement and much more. The School and District Report Cards were established by statute, [KRS 158.6453](#), and regulation, [703 KAR 5:140](#). Additionally, the Report Cards must incorporate the requirements of the federal [Elementary and Secondary Education Act](#).

Please explore the links below to view or download the current school and district report cards or to understand more about Kentucky's School Report Card Project. While the KDE website is the most convenient and inexpensive way for the vast majority of Kentucky parents to receive this information, schools and districts are required upon request to print cards for parents lacking Internet access.

Note: Data published on the school report card is validated by district personnel on or before the public release for the school year selected. Fall financial data is based on unaudited reporting and refreshed with audited numbers in March. Last updated date reflects the effective date of the data.

To access School Report Cards for years prior to 2011-2012, click [here](#).

STATE REPORT CARD

Year: 2016-2017

View Card

DISTRICT REPORT CARD

Year: 2016-2017

District: Adair County

View Card

SCHOOL REPORT CARD

Year: 2016-2017

District: Adair County

School: Adair County High School

View Card



<http://applications.education.ky.gov/SRC/>



Kentucky Department of Education

Our Children, Our Commonwealth

School Report Card



REPORT CARDS



DATA SETS



GLOSSARY



CONTACT US



Back To Report Card Search

Profile

Assessment

Program Review

Learning Environment

Finance

Delivery Targets

Career and Technical Education

526 Indian Dr
Columbia KY 42728
Phone: (270) 384-2751
Fax: (270) 384-6900

Adair County High School
Adair County
School Membership: 772
Grade Range: 9th-12th
Status: Title 1 Eligible - Schoolwide School

School Year: 2016-17
School Code: 001010
Classification: A1
Principal: Troy Young

Last Updated Date: 09/13/2017

2016-17 School Council Members

***No Accountability tab**

2017 State Highlights



Achievement

- Reading
- Mathematics
- Social Studies
- Writing
- Science – EOC, Alternate Assessment

Gap

- Consists of two components
 - Novice Reduction
 - Non-Duplicated Gap Group

Growth

- Only at elementary and middle school
- Reading and mathematics

College and Career Readiness

College Readiness

ACT, KYOTE and Compass (limited)

Career Readiness

WorkKeys or ASVAB and

KOSSA or Industry Certifications

Graduation Rate (Adjusted Cohort)

- 4-year rate used for graduation rate goal
- 5-year rate reported

2017 State Highlights



Achievement

- Reading
- Mathematics
- Social Studies
- Writing
- Science – EOC, Alternate Assessment

- **Increases in the percentage of Proficient and Distinguished by content area compared to 2015-16:**
 - **Reading – Middle 1.7%**
 - **Science – Biology (EOC) 3.6%**
 - **Social Studies – Elementary 2.3%, Middle .8%**
 - **Writing – Elementary 4.9%**
 - **Language Mechanics – Elementary 3.7%, Middle 6.8%**
- **Other areas experienced no change or decreases.**

2017 State Highlights

Gap

- Reading and Mathematics
- Two measures
 - Novice Reduction
 - Non-Duplicated Gap Group

Novice Reduction

- Percentage of students scoring Novice was reduced from 2015-16 in K-PREP reading at
 - middle school in each student group, and
 - high school all student groups, except American Indian or Alaska Native.
- The percentage of students scoring Novice was reduced in K-PREP mathematics at
 - elementary school for free/reduced price meal, disability with IEP, and non-duplicated gap group, and
 - middle school for disability with IEP.



2017 State Highlights



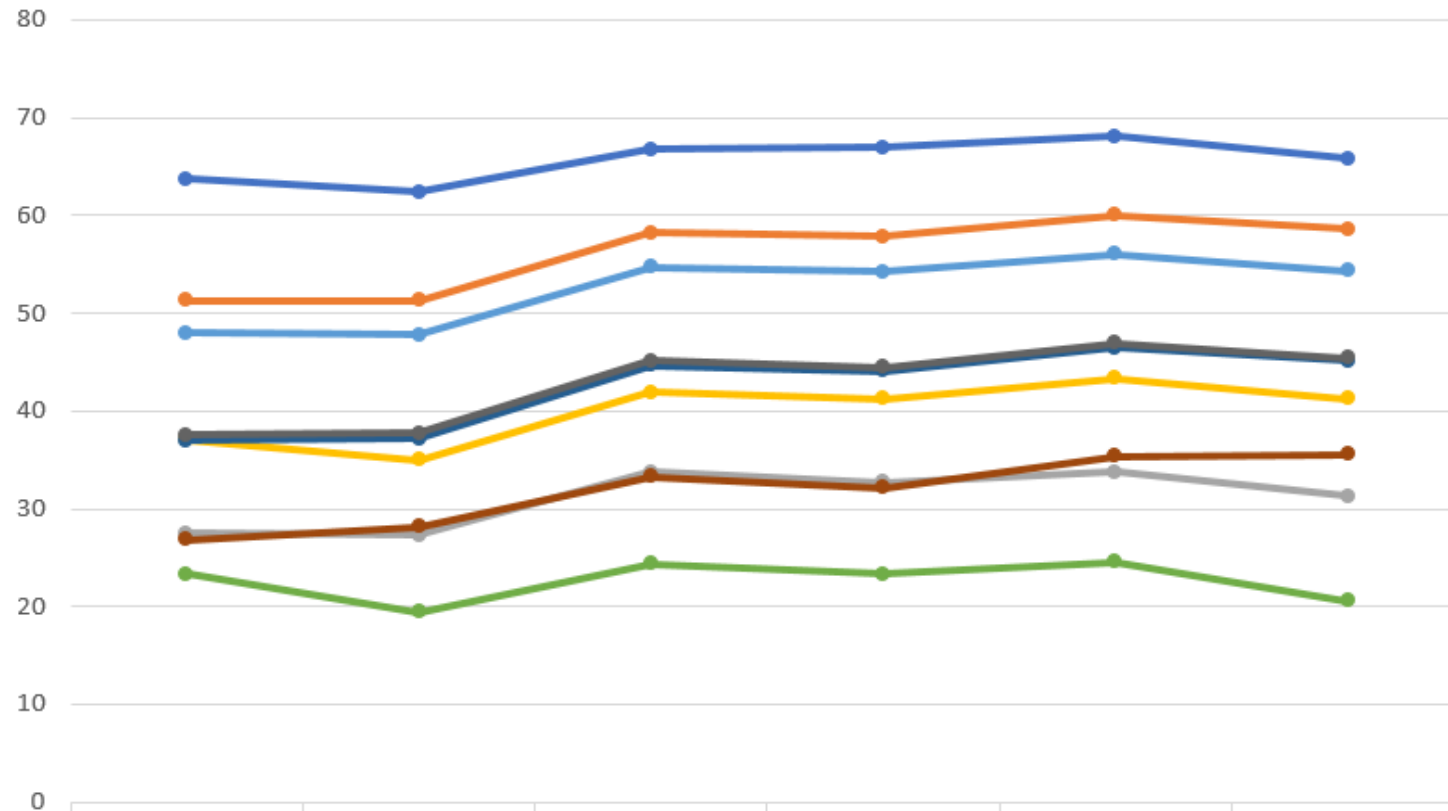
Gap

- Consists of two components
 - Novice Reduction
 - Non-Duplicated Gap Group

Non-duplicated Gap Group

- **Increases in the percentage of students in the non-duplicated gap group scoring Proficient and Distinguished by K-PREP content area compared to 2015-16:**
 - **Elementary school – Social studies (2.5%), writing (5.3%) and language mechanics (3.6%)**
 - **Middle school – Reading (2%), mathematics (.4%), social studies (.8%) and language mechanics (6.2%)**
 - **High school – Science (3.5%)**

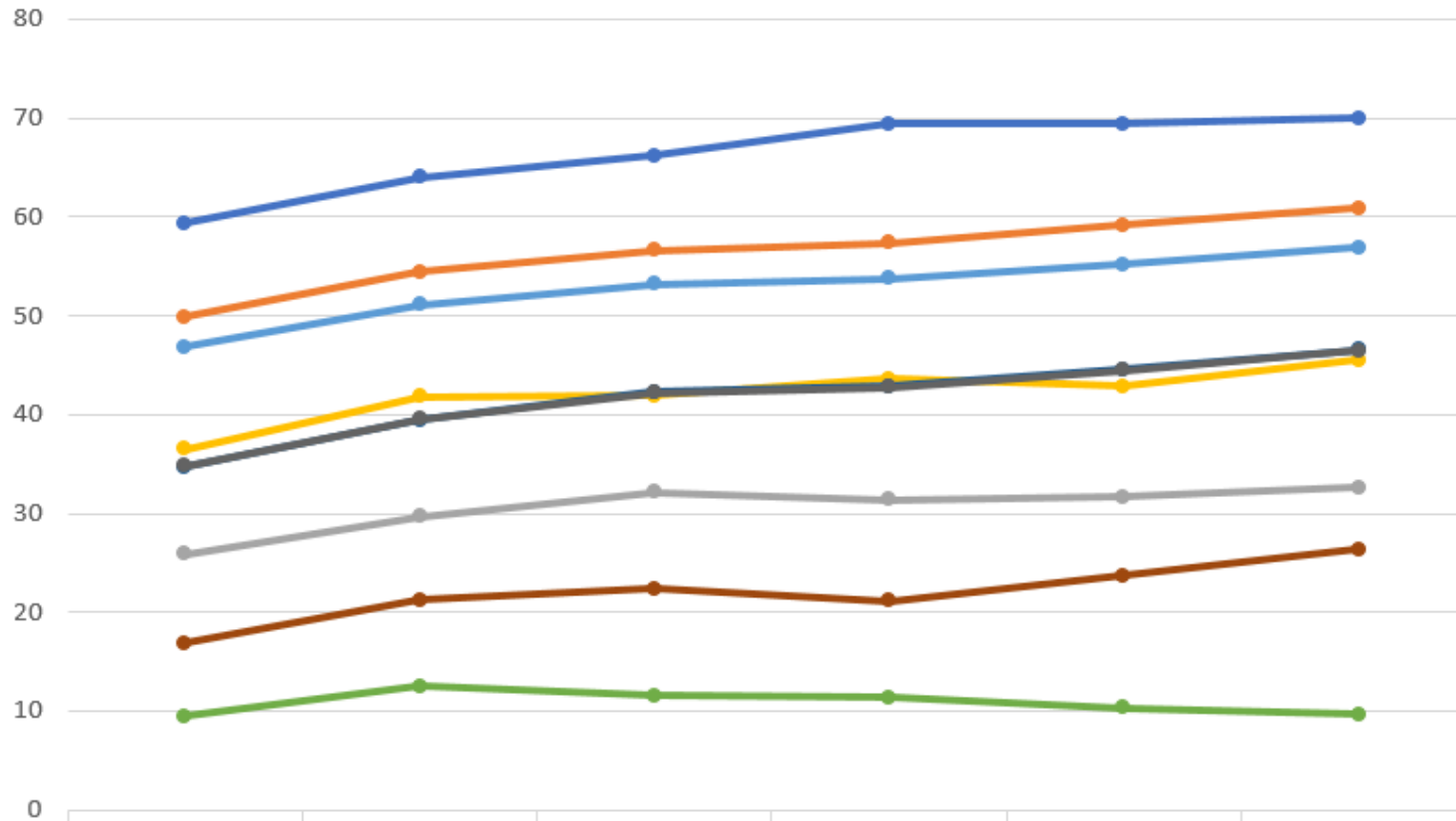
Reading - Elementary Percent Proficient/Distinguished



	2012	2013	2014	2015	2016	2017
All Students	48	47.8	54.7	54.2	56	54.3
White	51.3	51.3	58.2	57.8	60	58.6
African American	27.5	27.3	33.8	32.7	33.8	31.3
Hispanic	37.1	35	41.9	41.2	43.3	41.2
Asian	63.7	62.4	66.8	66.9	68.1	65.8
English Language Learners	23.3	19.4	24.4	23.3	24.6	20.6
Free/Reduced Lunch	37	37.2	44.7	44.1	46.5	45.1
Students with Disabilities (IEP)	26.8	28.2	33.3	32.1	35.4	35.6
Gap Group	37.5	37.7	45.1	44.5	46.9	45.4



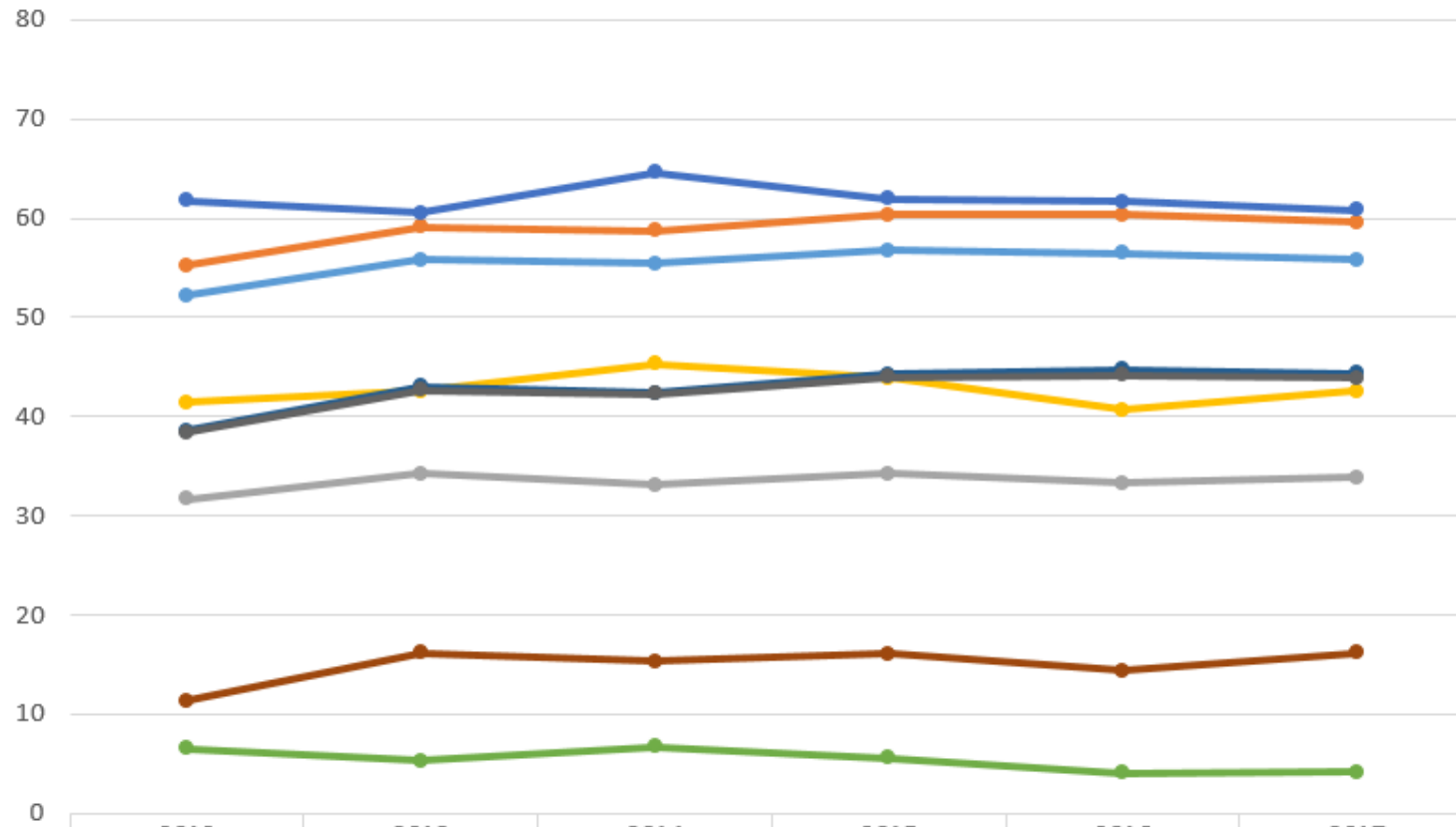
Reading - Middle School Percent Proficient/Distinguished



	2012	2013	2014	2015	2016	2017
All Students	46.8	51.1	53.2	53.8	55.2	56.9
White	49.9	54.4	56.6	57.4	59.2	60.9
African American	25.9	29.7	32.1	31.4	31.7	32.6
Hispanic	36.5	41.8	41.9	43.6	42.9	45.5
Asian	59.4	64	66.2	69.4	69.4	70
English Language Learners	9.5	12.5	11.6	11.4	10.3	9.7
Free/Reduced Lunch	34.7	39.4	42.3	42.9	44.6	46.6
Students with Disabilities (IEP)	16.9	21.2	22.4	21.1	23.7	26.4
Gap Group	34.8	39.5	42.2	42.8	44.5	46.5



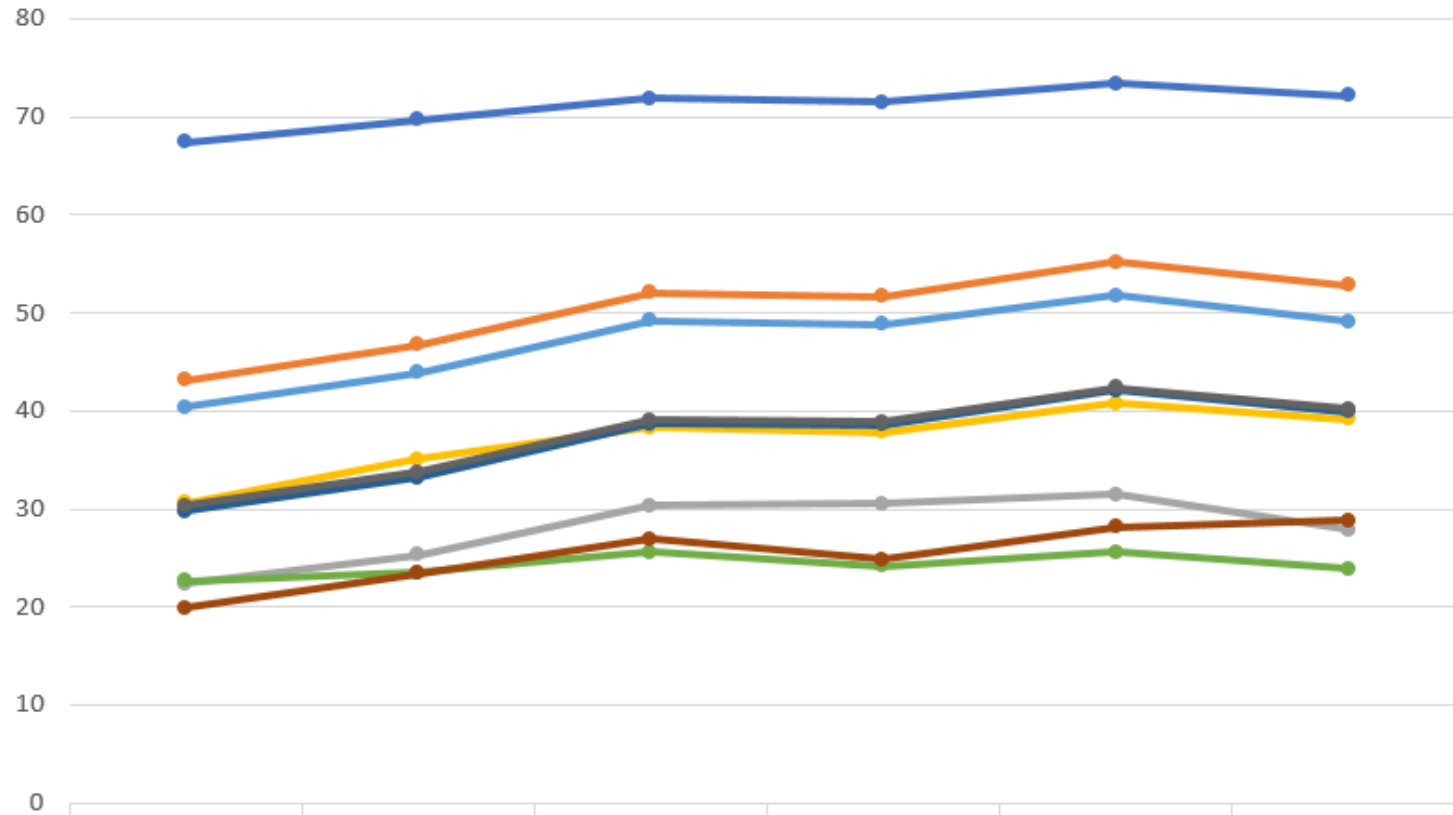
Reading - High School Percent Proficient/Distinguished



	2012	2013	2014	2015	2016	2017
All Students	52.2	55.8	55.4	56.8	56.5	55.8
White	55.2	59.1	58.7	60.4	60.4	59.6
African American	31.7	34.2	33.1	34.2	33.3	33.9
Hispanic	41.4	42.6	45.3	43.9	40.7	42.6
Asian	61.8	60.5	64.6	62	61.7	60.8
English Language Learners	6.5	5.3	6.7	5.6	4.1	4.2
Free/Reduced Lunch	38.6	43	42.4	44.3	44.7	44.4
Students with Disabilities (IEP)	11.3	16.2	15.3	16.1	14.4	16.2
Gap Group	38.4	42.7	42.3	44	44.2	43.9



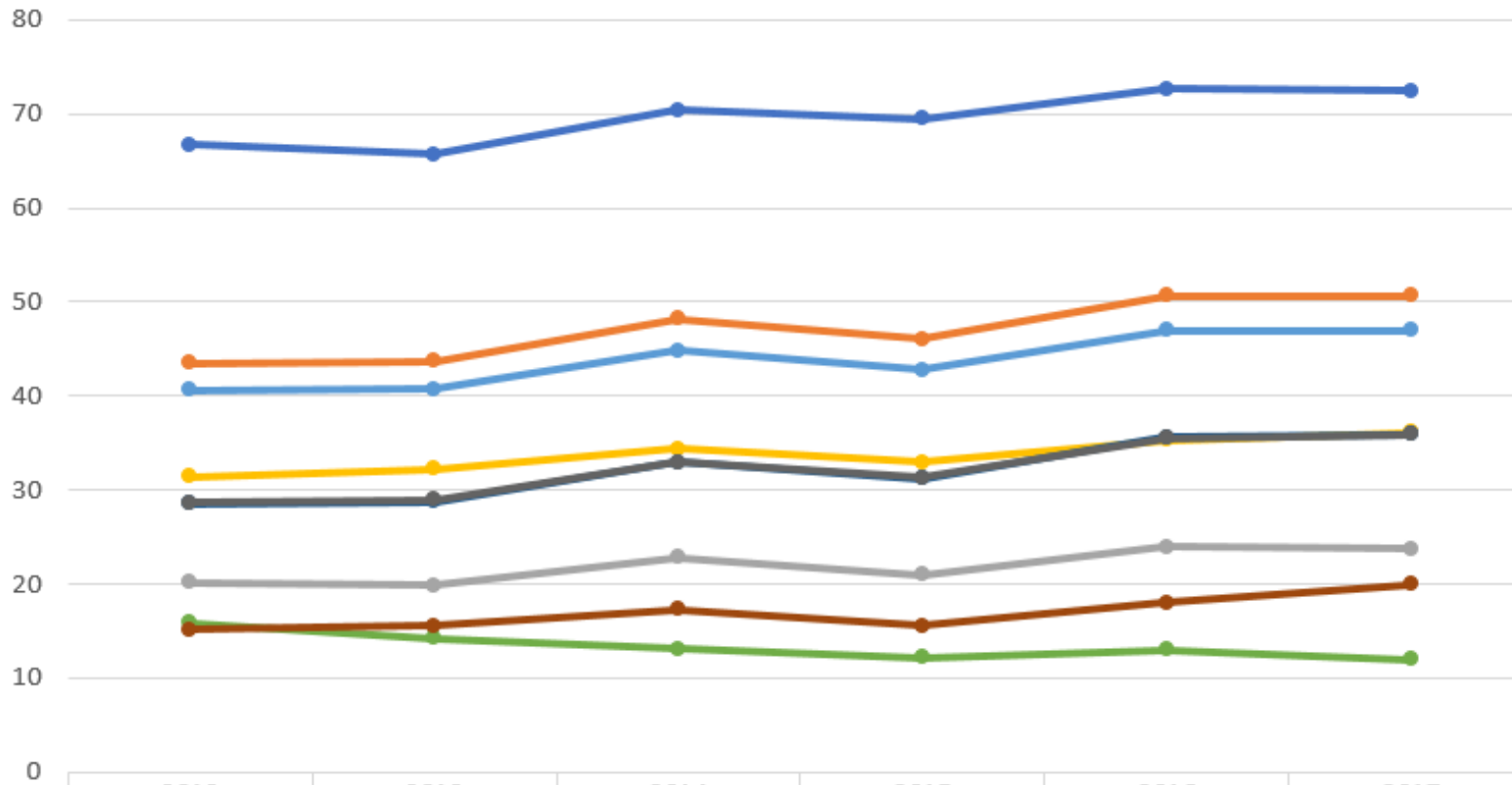
Mathematics - Elementary Percent Proficient/Distinguished



	2012	2013	2014	2015	2016	2017
All Students	40.4	43.9	49.2	48.8	51.8	49.1
White	43.1	46.7	52.1	51.7	55.2	52.8
African American	22.4	25.3	30.3	30.5	31.5	27.9
Hispanic	30.6	35.1	38.3	37.8	40.8	39.2
Asian	67.4	69.7	71.9	71.5	73.4	72.2
English Language Learners	22.7	23.5	25.6	24.2	25.6	23.9
Free/Reduced Lunch	29.8	33.2	38.7	38.6	42.1	39.9
Students with Disabilities (IEP)	19.9	23.4	26.9	24.8	28.2	28.8
Gap Group	30.3	33.8	39.1	38.9	42.4	40.2



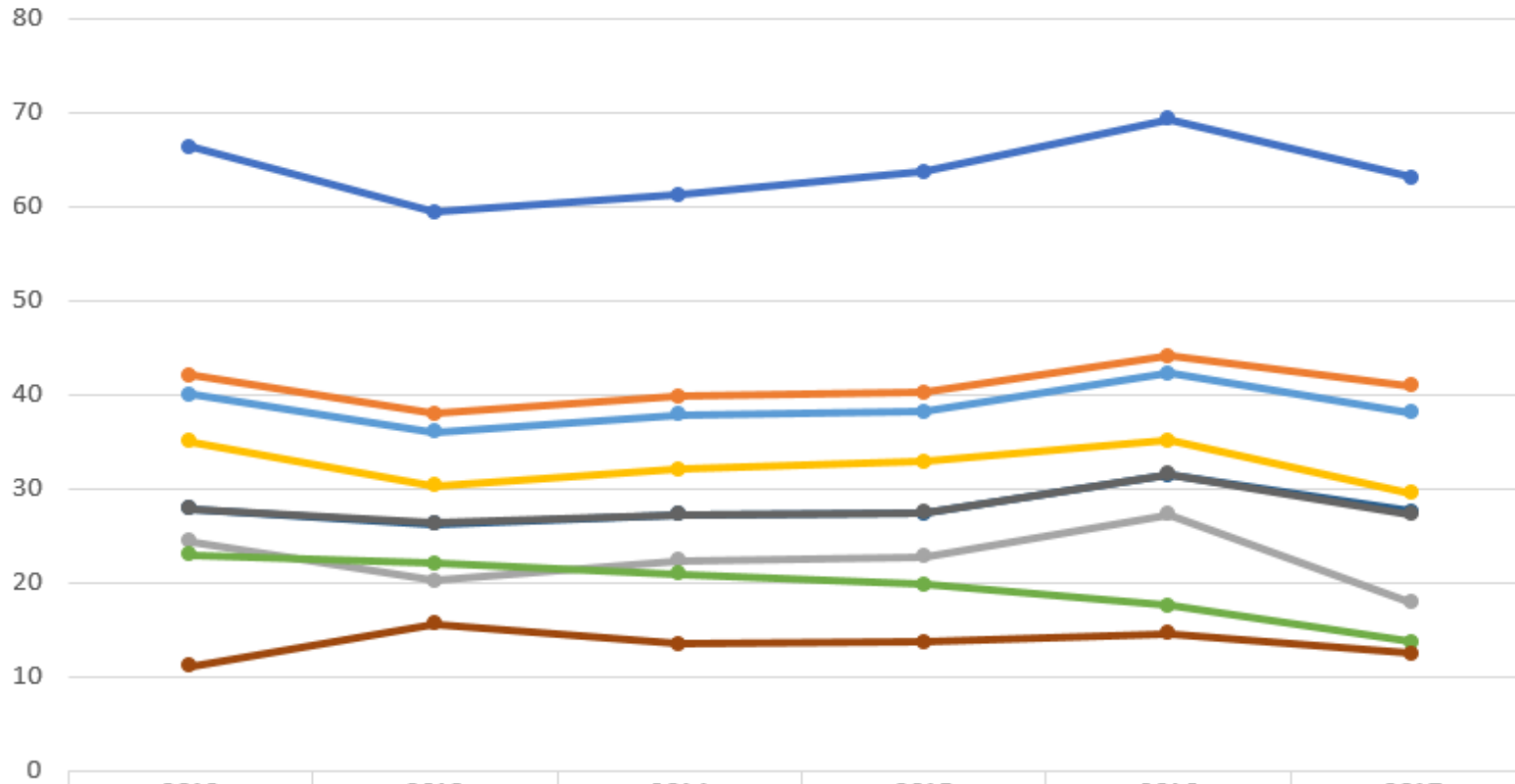
Mathematics - Middle School Percent Proficient/Distinguished



	2012	2013	2014	2015	2016	2017
All Students	40.6	40.7	44.8	42.8	47	47
White	43.5	43.7	48.2	46.1	50.7	50.7
African American	20.2	19.8	22.8	21	23.9	23.7
Hispanic	31.4	32.2	34.4	33	35.3	36.1
Asian	66.7	65.7	70.4	69.5	72.7	72.5
English Language Learners	15.9	14.2	13.1	12.2	13	12
Free/Reduced Lunch	28.5	28.8	32.9	31.2	35.6	35.9
Students with Disabilities (IEP)	15.1	15.5	17.3	15.5	18	19.9
Gap Group	28.7	29	33	31.3	35.5	35.9



Mathematics - High School Percent Proficient/Distinguished



	2012	2013	2014	2015	2016	2017
All Students	40	36	37.9	38.2	42.3	38.1
White	42.1	38	39.8	40.2	44.1	40.9
African American	24.4	20.2	22.3	22.8	27.3	17.9
Hispanic	35	30.3	32	32.9	35.1	29.5
Asian	66.4	59.4	61.3	63.7	69.3	63.1
English Language Learners	23	22	20.9	19.8	17.6	13.7
Free/Reduced Lunch	27.9	26.2	27.2	27.4	31.4	27.6
Students with Disabilities (IEP)	11.1	15.6	13.5	13.7	14.6	12.4
Gap Group	27.9	26.3	27.3	27.5	31.5	27.2



2017 State Highlights



Growth

- Only at elementary & middle school
- Reading and mathematics

- **Student Growth Percentile**
 - Compares each student's performance to academic peers.
 - Score at and above 40th percentile earn credit
 - Based the 40th percentile, state always has 60% of the students showing growth.
- **Categorical Growth**
 - Measures movement to higher performance levels or remaining at proficient/distinguished
 - Elementary: 59.5% in reading and 55.9% in mathematics.
 - Middle: 63.5% in reading and 53.1% in mathematics

2017 State Highlights



College and Career Readiness

College Readiness

ACT, KYOTE and Compass (limited)

Career Readiness

WorkKeys or ASVAB and KOSSA or Industry Certifications

- The percentage of graduates college- and/or career-ready decreased from 68.5% to 65.1%.
- The bonus points earned when students are college ready and career technical ready decreased from 81.9 to 77.8.
- More students graduated.
- Compass was not provided as a college readiness measure.
- Fewer students were college ready compared to 2015-16.
- More students were career ready compared to 2015-16.

2017 State Highlights



Graduation Rate (Adjusted Cohort)

- 4-year rate used for graduation rate goal
- 5-year rate reported

Graduation Rate			
	Year	Four-year Adjusted Cohort	Five-year Adjusted Cohort
High School	2014	87.5	88.0
	2015	88.0	89.0
	2016	88.6	89.7
	2017	89.8	90.2

2017 State Highlights

ACT (junior administration)

- More students took the ACT (45,745)
- Scores increased in every subject (English, mathematics, reading and science)
- Composite increased by .3
- Greater percentage met KY Council on Postsecondary Education benchmarks



Percentages of Kentucky Public School Juniors Who Meet CPE Benchmarks for College-Level Readiness

	English	Mathematics	Reading
2012-13	53.1%	39.6%	44.2%
2013-14	55.9%	43.5%	47.1%
2014-15	55.3%	38.1%	47.4%
2015-16	54.3%	39.7%	49.2%
2016-17	55.8%	43.7%	53.2%

2017 State Highlights

Advanced Placement (AP)

- More students (32,192) took more AP exams (51,637)
- Increased number of exams had qualifying scores of 3 or higher (25,670)
- More low income students took exams (8,506) than the year before (7,466), supported by fee waivers or reductions and KDE funding



2017 State Highlights



Number of Public School Students Taking One or More AP Exams – By Race/Ethnicity

	Number of test takers	Percentage of total test takers	Number of tests given	Number of tests scores 3 or higher
American Indian	33	0.1	51	26
Asian	1,304	4.05	2,784	1,811
African American	2,043	6.35	2,926	790
Hispanic or Latino	1,342	4.17	2,064	847
Pacific Islander	33	0.1	52	26
2 or more races	703	2.18	1,100	525
White	26,734	83.05	42,660	21,645
TOTAL	32,192	100	51,637	25,670

