



Cecilia Valley Elementary



Construction Update

August 7, 2017

Original Construction Cost:	\$15,510,000.00
Present Construction Cost:	\$15,492,416.72 (Including Change Orders 1-6)

Original Completion Dates	
Substantial Completion:	September 1, 2017
Final Completion:	October 1, 2017

Anticipated Completion Dates	
Substantial Completion:	October 23, 2017 (Pending G.C. Submittal and Approval)
Final Completion:	November 23, 2017 (Pending G.C. Submittal and Approval)



Change Order Summary

<u>Change Order</u>	<u>Amount</u>	<u>Status</u>	<u>Rvsd. Contract Amount</u>
Change Order No. 01	\$3,765.00	BOE Approved	\$15,513,765.00
Change Order No. 02	\$0.00	BOE Approved	\$15,513,765.00
Change Order No. 03	\$3,839.00	BOE Approved	\$15,517,604.00
Change Order No. 04	\$33,737.00	BOE Approved	\$15,551,341.00
Change Order No. 05	(\$53,691.75)	BOE Approved	\$15,497,649.25
Change Order No. 06	(\$5,232.53)	BOE Approved	\$15,492,416.72
Change Order No. 07	\$7,768.00	To BOE 7-31-17	\$15,500,184.72

Summary

- Exterior face brick complete. Front canopy and tower near completion
- Interior CMU complete
- Interior cast stone nears completion
- Exterior storefronts / windows near completion
- Glazing complete at 1st floor and commencing at 2nd floor
- ICF parapets complete. Cornice installation approximately 75% complete
- Metal roof decking complete
- Membrane roofing complete (except granular top coat)
- Metal roofing not yet commenced
- Gypsum wallboard complete at 1st floor and commenced at 2nd floor
- Suspended ceiling grid system at 1st floor approximately 80% complete
- Quarry tile flooring in kitchen complete
- Paint (first coat) complete at 1st floor and commenced at 2nd floor
- Painting of exposed metal roof deck has commenced
- Permanent power expected to be complete in 1-week +/-
- Building expected to be "closed-in" by September 7th +/-
- 2nd floor fire suppression system nears completion
- Piping insulation ongoing
- Placement of mechanical units and control cabling has commenced at 1st floor
- Storm system piping nears completion
- Forced-main system to be complete in 1-week +/-
- Concrete curbs and sidewalks have commenced
- Stone placement commenced at some parking lots
- Storage building walls completed. Awaiting trusses and roofing
- Special Inspections ongoing. No outstanding issues.



North End of Front Canopy / Main Entry (Behind Scaffold) / North Wing



South End of Front Canopy / Central Tower at Front Canopy



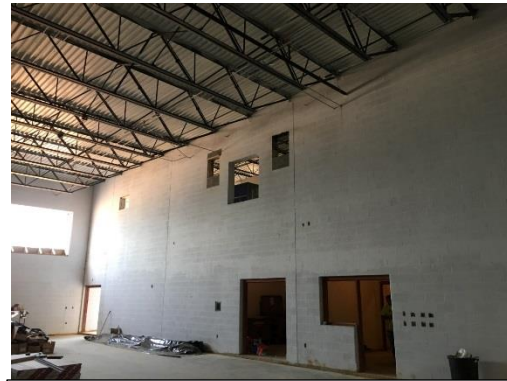
Central Tower at Front Canopy (Main Entry Behind)



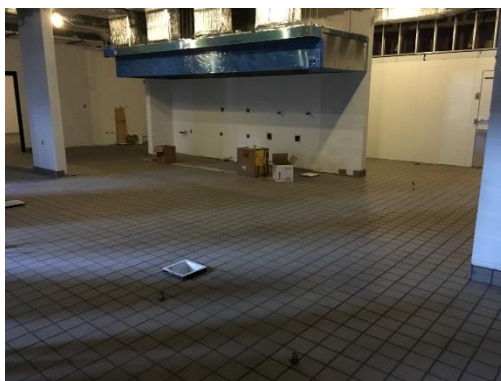
Preschool Classrooms / Media Center



Classroom Interior



Gymnasium Interior



Kitchen Interior



Floor Lobby / Clerestory Interior