



Cecilia Valley Elementary



Construction Update

July 7, 2017

Original Construction Cost:	\$15,510,000.00
Present Construction Cost:	\$15,517,604.00 (Revised by Change Order No. 03)

Original Completion Dates	
Substantial Completion:	September 1, 2017
Final Completion:	October 1, 2017

Anticipated Completion Dates	
Substantial Completion:	September 19, 2017 (Revised by Change Order No. 3)*
Final Completion:	October 19, 2017 (Revised by Change Order No. 3)*

*ITC advises of weather delay request for previous two months to be submitted.



Change Order Summary

<u>Change Order</u>	<u>Amount</u>	<u>Status</u>	<u>Rvsd. Contract Amount</u>
Change Order No. 01	\$3,765.00	BOE Approved	\$15,513,765.00
Change Order No. 02	\$0.00**	BOE Approved	\$15,513,765.00
Change Order No. 03	\$3,839.00	BOE Approved	\$15,517,604.00
Change Order No. 04	\$33,737.00	BOE Approved	\$15,551,341.00
Change Order No. 05	(\$53,691.75)	to BOE 6-26-17	\$15,497,649.25

Summary

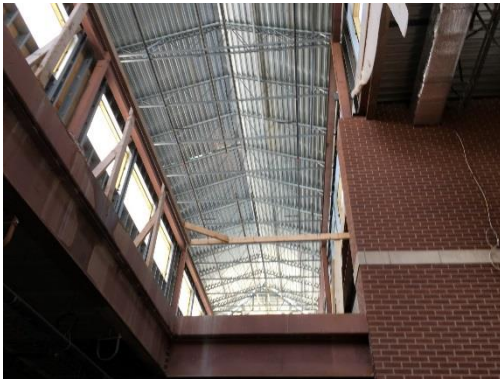
- Exterior face brick nears completion.
- Exterior storefronts windows ongoing.
- Interior cast stone / brick veneer nears completion.
- Interior CMU nearly complete. Metal stud framing commenced.
- ICF parapets are completed. Cornice installation to commence soon.
- Metal roof decking to be complete within one week.
- Metal trusses and secondary framing at clerestory are completed.
- Membrane roofing nears completion.
- Metal roofing at clerestory to commence soon.
- Kitchen M/E rough-in completed.
- 2nd floor M/E rough-in nearly complete.
- Piping insulation is ongoing.
- 2nd floor fire suppression sprinklering ongoing.
- Pump station nears completion.
- Storm system piping nears completion.
- Commence quarry tile flooring in Kitchen soon.
- Commence window glass installation soon.
- Sample stain concrete slab to commence soon.
- Special Inspections ongoing. No outstanding issues.



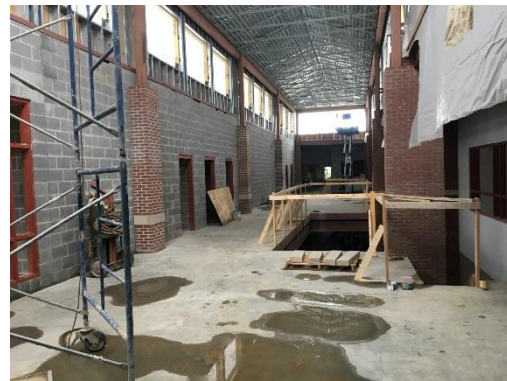
West Classrooms / Teacher's Entry



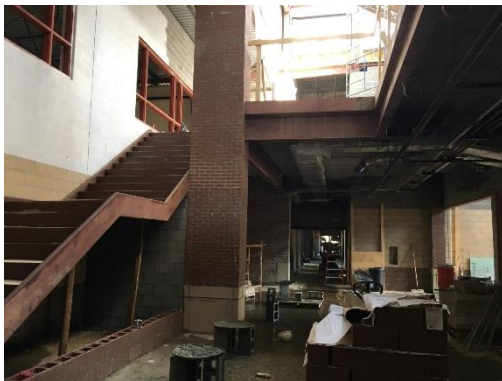
West Classrooms/Teacher's Entry / Admin Suite.



Clerestory from Monumental Stair



Clerestory from 2nd Floor Corridor



Monumental Stair from Lobby



Walk-in Cooler & Freezer in Kitchen



Cafeteria / Rear Entry / Gym



ICF walls, concrete planks above & concrete slab