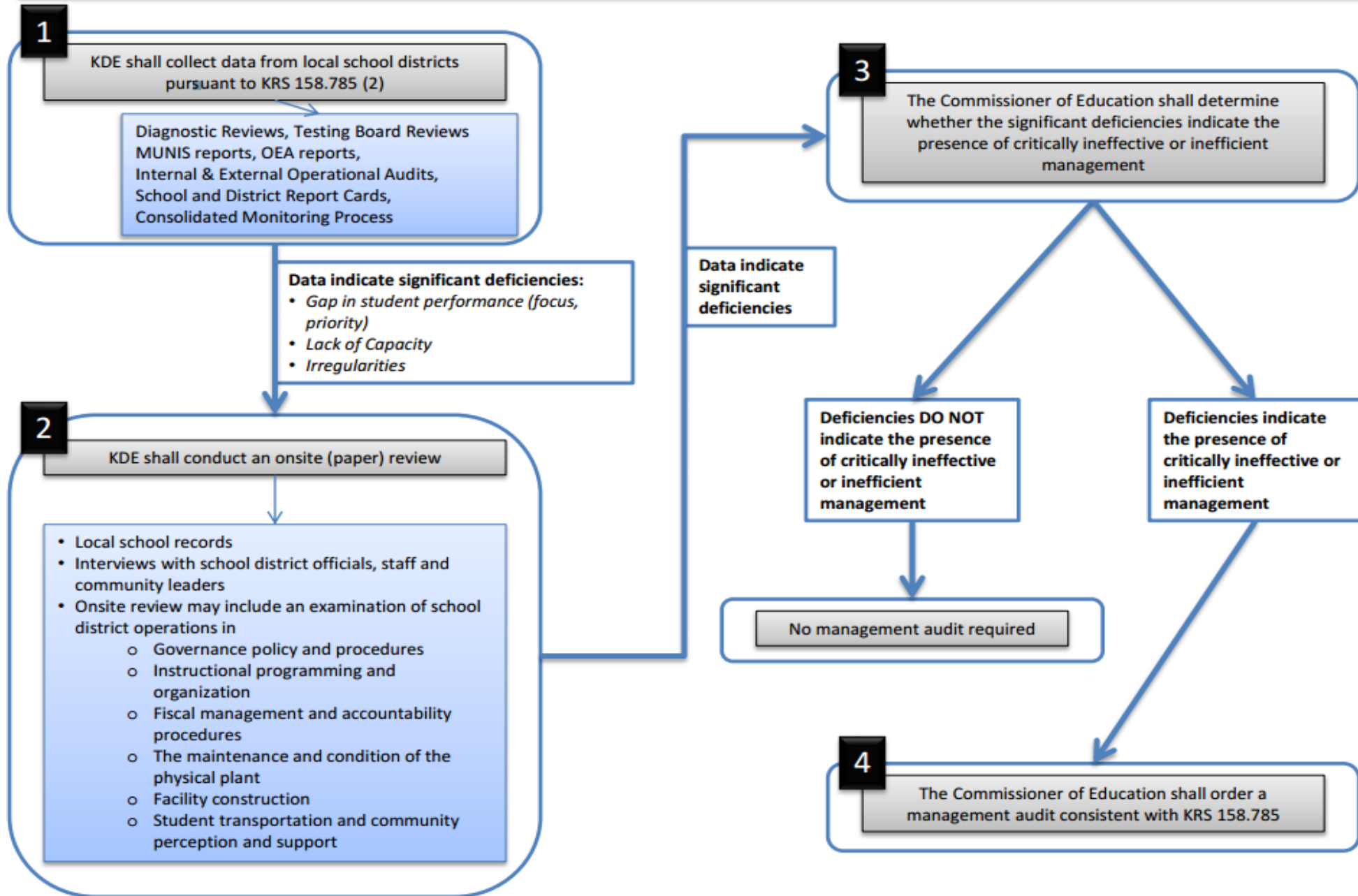




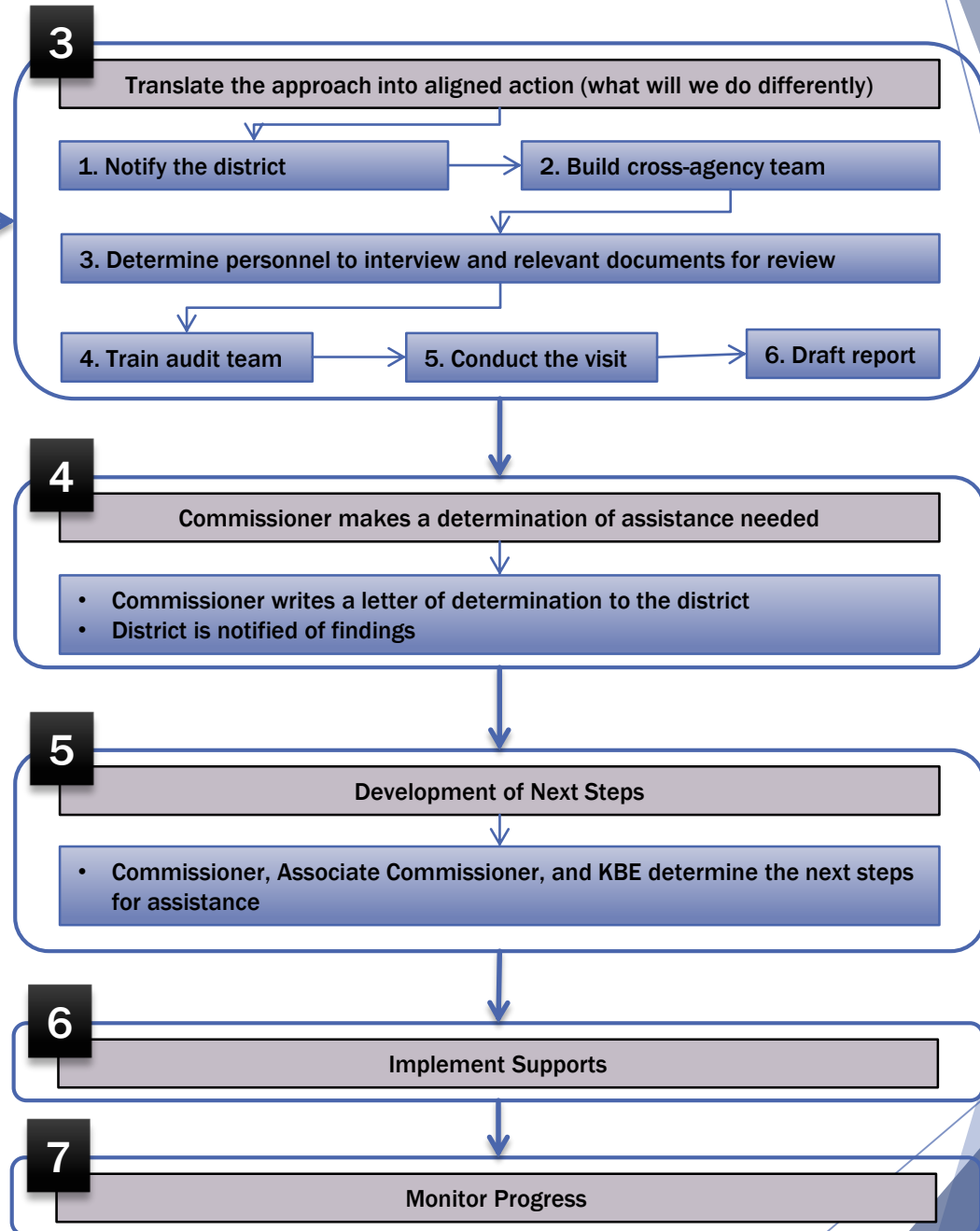
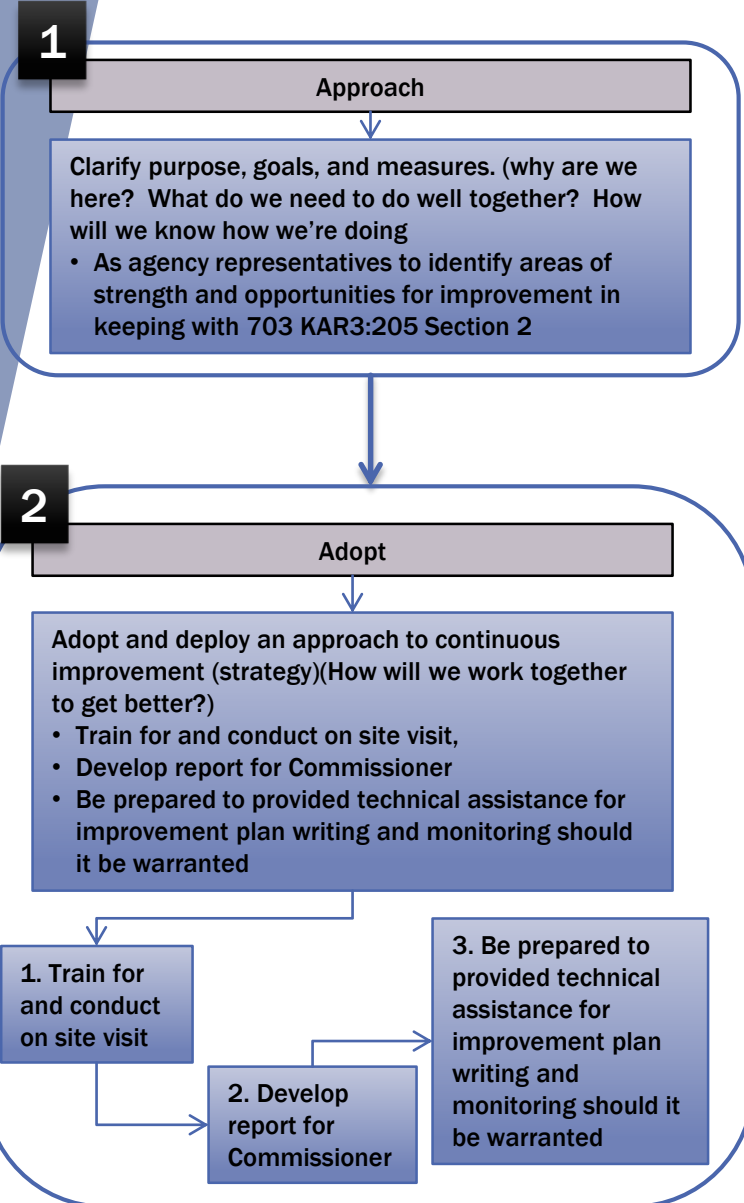
# State Assisted Districts

Kelly Foster, Associate Commissioner  
Robin Kinney, Associate Commissioner

## Determining the Need for the Management Audit



# Process for Conducting the Management Audit



# Robertson County

- ▶ Entered State Assistance: October 8, 2013
- ▶ Concerns about leadership and finances

	2012-2013	2015-2016	2016-2017
AADA	309.215	347.876	343.12
Fund Balance	\$53,526	\$801,286	-



# Fleming County

- ▶ Entered State Assistance: December 4, 2013
- ▶ Concerns about finances and leadership
- ▶ Priority School – Fleming County High School
  - District lacked capacity (Diagnostic Review - 2014)

	2012-2013	2015-2016	2016-2017
AADA	2112.216	2121.596	2101.688
Fund Balance	\$106,387	\$1,779,446	–



# Caverna Independent

- ▶ Entered State Assistance: February 4, 2015
- ▶ Concerns about facilities and leadership
- ▶ Priority School: Caverna High School
  - District lacked capacity (Diagnostic Review 2014)
  - Caverna High School exited priority status (2014)

	2012-2013	2015-2016	2016-2017
AADA	648.846	653.795	642.391
Fund Balance	\$1,140,217	\$2,146,581	–



