

Project Construction Field Report

Project Name: Nelson County Schools – Guaranteed Energy Savings Contract – Bloomfield Middle and Bloomfield Elementary Schools.
Date: 04/07/2017
Contractors: Intertech Mechanical, Freedom Electric, ECT Controls
Distribution: Kevin Mattingly; Todd Sanders; Tim Hockensmith; Adam Pierce; Jon Gasser

Work Completed (04/03 – 04/07):

Freedom- (Electrical)

Bloomfield Middle School:

- Removed existing ballast from classroom and corridor lighting fixtures and replaced tombstones, and installed new LED tubes in the "2 lamp fixtures". (Lighting fixture changes and replacements in-progress)





Bloomfield Elementary School:

- Removed existing ballast from lighting fixtures and replaced tombstones, and installing new LED tubes in the "2 lamp fixtures" for cafeteria and kitchen area, and class rooms 206 and 204. (LED tubes and tombstone change outs in-progress)

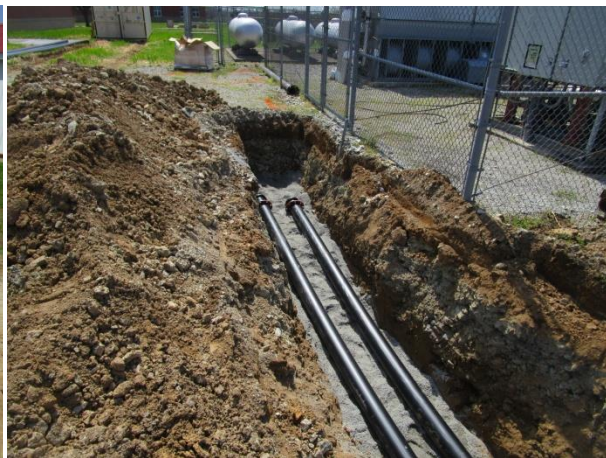


Intertech Mechanical:

Bloomfield Middle School:

- Excavating trench for geothermal lateral piping from chiller location to geo-vault.
- Fusion welding pipe sections.
- Dane Sheet Metal onsite reviewing ductwork take offs and dimensions for duct fabrication.





Other Items:

- Damaged electrical circuit feed to Football/Soccer field score board. (CMTA/Freedom Electric to make repairs).

Work to be completed (04/10 – 04/14):

Intertech Mechanical

- Complete trenching and geothermal lateral piping installation.

Freedom Electrical

- Make repairs to scoreboard sign electrical circuit.

Safety Items:

Site Review:

- Daily site review walk through's were completed; no hazardous conditions to report.
- Contractors were wearing appropriate PPE for their assigned task, and hard hats were worn at all times.

Weekly Tool Box Safety Talks:

- Portable Ladder Safety (OSHA Quick Card) was read to all onsite members for Freedom Electric and was documented to the Project Safety Manual.
- Working Safely in Trenches (OSHA Quick Card) was read to all onsite members for Intertech Mechanical and was documented to the Project Safety Manual.

Deliveries to site:

- (2) 40 foot connex storage units. (1) CMTA; (1) Intertech Mechanical.
- Skytrack lift (Intertech)
- Geothermal piping (Intertech)
- Sand (fill) 2 - loads
- (7) pallets of LED tubes and fixtures (CMTA/Freedom).

End of report.

Mike McNair

Construction Project Manager

CMTA Energy Solution