



Cecilia Valley Elementary



Construction Update

February 3, 2017

Original Construction Cost:	\$15,510,000.00
Present Construction Cost:	\$15,517,604.00 (Revised by Change Order No. 03)

Original Completion Dates	
Substantial Completion:	September 1, 2017
Final Completion:	October 1, 2017

Anticipated Completion Dates	
Substantial Completion:	September 19, 2017 (Revised by Change Order No. 3)
Final Completion:	October 19, 2017 (Revised by Change Order No. 3)



Change Order Summary

<u>Change Order</u>	<u>Amount</u>	<u>Status</u>	<u>Rvsd. Contract Amount</u>
Change Order No. 01	\$3,765.00	BOE Approved	\$15,513,765.00
Change Order No. 02	\$0.00**	BOE Approved	\$15,513,765.00
Change Order No. 3	\$3,839.00	BOE Approved	\$15,517,604.00

Summary

- Force main to site is complete; Repair and seeding of lawns in progress
- Masonry working on non-load bearing walls; Load bearing wall complete
- CMU corners have been corrected at doors
- ICF complete at first floor and underway at second floor
- Plank installation is 65% complete. Placing of steel reinforcement and grouting of plank joints is in progress
- First floor steel is set except for at stairs
- Electrical and mechanical work continues as masonry progress
- Plumbing is underway at first floor chases in Area "B"

Progress Photos

Refer to attached Architect's Field Report Dated January 12, 2017.



January 23, 2017

ARCHITECT'S FIELD REPORT

RE: Cecilia Valley Elementary School
Elizabethtown, Kentucky
SCB Project No. 1429

REPORT DATE: January 12, 2017

REPORT BY: Jim Percy

WEATHER: Cloudy, periods of rain, low 50's

PRESENT: Tim Gupton Isaac Tatum Construction

Field Notes

1. Due to the rain and wet conditions, the only work in progress this date is the installation of some overhead plumbing and hollow metal door frames being set.
2. Water was standing and has been for the last month at the front of the building due to the excessive amount of rain and at the rear of building at the retention basin, a large amount of water has been dammed up and is slowly releasing through the rock dam wall.



3. Jim Percy indicated to Tim Gupton the soil on the new bus entry from the road needs to be removed and only crushed stone is to be placed at this drive in particularly where the storm drain passes below the drive, as the drain pipe is plastic.

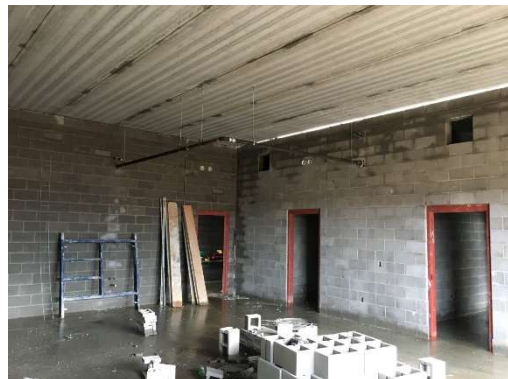
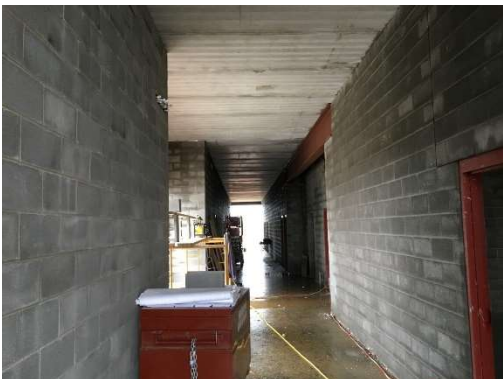


4. There are still some block masonry walls laid below the slab elevation that have not been grouted and are now accumulating trash and some have been filled with crushed stone. These need to have the trash removed and grouted up to the slab elevation.



5. First floor structural steel has been set and hollow metal door frames are in the process of being set for the non-load bearing masonry walls and the concrete second floor structural floor planks are in the process of being set and the joints grouted.





6. The four-inch block masonry wall at the south end of the gym, the Contractor needs to ensure the rough in boxes for the Wi-Fi are a minimum of 10 feet above finished floor so not to interfere with the bleachers.
7. As indicated in previous Architect's Field Reports, the tooling and the spacing of joints in block masonry walls need to improve as these are finished walls that receives paint.

Page 4

End of report. If you have questions or comments regarding this report, please notify this office.

Respectfully submitted,

A handwritten signature in black ink, appearing to read "Jim Percy". The signature is written in a cursive, slightly slanted style.

Jim Percy. Construction Administrator

cc: John Stith, Isaac Tatum/Timothy Tatum (for distribution), Kenny Stanfield, Tyler Wilson, Tom Smith,
Bill Grigsby, File 1429-M

X:\Projects\2014\1429\Minutes & Reports\AFR 1-12-17.docx