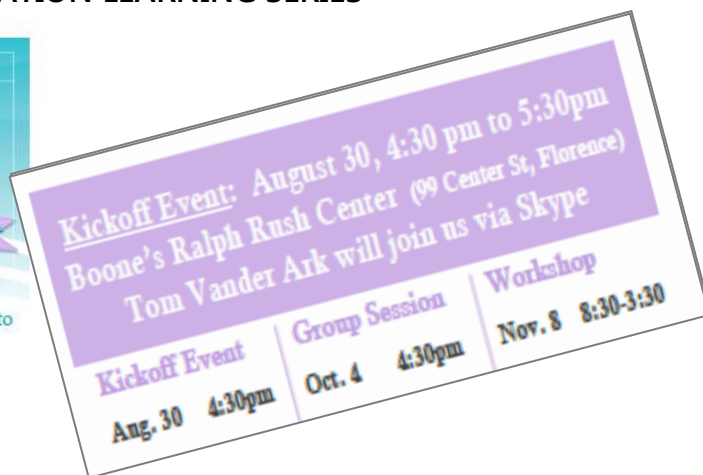
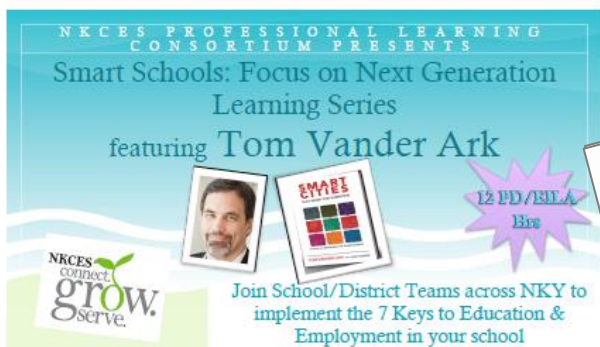


BE IN THE KNOW WITH **NKCES**

October 2016

1 SMART SCHOOLS: FOCUS ON NEXT GENERATION LEARNING SERIES



Join in on our regional conversation to implement the 7 Keys to education and employment in Northern Kentucky. The workshop focuses School/District Teams on drafting a student focused plan for defining and developing 21st Century skills and learning that prepares students for future education and career. It is not too late to join the discussion to prepare our region for the 21st Century Learner. Click [HERE](#) to register

2 NOVICE REDUCTION STRATEGIES FOR SCHOOL IMPROVEMENT

October 6(session is full) OR November 10, 2016, Ralph Rush Center, 8:00AM-4:30PM

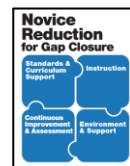


The Novice Reduction Team will share with teacher leaders, principals, & district leaders the strategies that impact novice learners the greatest when implemented with fidelity. We will dive deep into the Key Core Work Processes at the classroom level with a focus on continuous improvement in order to empower our schools and districts to create and sustain plans that **WILL** make a difference in student performance.

School leadership teams may want to register early due to limited space.

<http://education.ky.gov/school/stratclsgap/Pages/default.aspx>

Click [HERE](#) to register.



3 DEALING WITH NONCOMPLIANT AND DIFFICULT STUDENTS: WILL YOU DIFFUSE OR ESCALATE THE SITUATION?



October 28, 2016, Ralph Rush Center, 8:30AM-3:30PM

Donna Meers from Safe & Civil Schools

Dealing with noncompliant and difficult students: will you diffuse or escalate the situation? There is no question that educators face serious challenges in dealing with student behavior. These problems have multiple causes and require multiple or multifaceted solutions. Clearly, there are no easy answers or quick fixes. One piece of the puzzle lies in how staff manage the problem behavior of their students. These behaviors can be defused or escalated, managed safely or unsafely. We will discuss strategies to decrease non-compliance and how to recognize The cycle of anger and wants to de-escalate behavior. Click [HERE](#) to register!

BE IN THE KNOW WITH NKCES

October 2016

4 BETTER CONVERSATIONS with Tricia Skyles (Continuation of Coaches Series)



**December 15-16, 2017, Gateway Community & Technical College,
Florence from 8:30AM-3:30PM**

In *Better Conversations*, Jim Knight reveals why and how true dialogue will improve professional performance, job satisfaction, and classroom instruction. Together with this Reflection Guide, the two books provide a brilliant, scaffolded professional learning experience on a topic central to learning, and central to life.

During the *Better Conversation* workshop, participants will:

- Engage in surveys, take stock, and record video in order to get real about their current beliefs and abilities. Guiding questions include: How do you measure up when it comes to empathy, asking better questions? Finding common ground?
- Learn about the 10 habits of being an effective communicator, and put them into practice. Guiding questions include: Are your conversations focused on others 50 percent of the time? What things typically distract you from being fully present?

December 15 - 16, 2016 8:00 a.m. – 3:00 p.m. Gateway – Boone Campus Convening Center	Fees \$200.00 (includes Books) Lunch is on your own Click HERE to register	
---	---	--

5 YOUNG WOMEN LEAD CONFERENCE with JULIA GARCIA



October 17 – 18, 2016, NKU

[Click HERE to register](#)

NORTHERN KENTUCKY/CINCINNATI

SAVE THE DATE
10.17.16 OR 10.18.16
CONFERENCE IS FREE!

YOUNG WOMEN LEAD
LEADERSHIP, EDUCATION AND DEVELOPMENT

Presented by
TOYOTA
Partners

NKU
INSTITUTE FOR
Talent Development
& Gifted Studies

SOAR
Sustained Opportunity for
Achievement and Resilience

FEATURING KEYNOTE SPEAKER
JULIA GARCIA

Julia Garcia is the Founder and President of The TRU Movement, a non-profit organization infusing story telling and performance art that break down walls, stereotypes, and labels that keep young people from being **The Real U**. Her powerful presentations, interactive workshops and intense team building activities, empowers students from all walks of life to believe in their TRU potential, believe in each other, and most importantly, to believe in themselves. Through her powerful use of story telling, slam poetry, and audience interaction she is truly one of the most unique speakers of our time.

WHO'S INVITED:
High School Girls in the Northern Kentucky and Cincinnati area

WHEN:
Monday, October 17, 2016 or Tuesday, October 18, 2016

WHERE:
Northern Kentucky University Campus | Highland Heights, KY 41099

HOW TO REGISTER: Go to www.youngwomenlead.com
On-line registration will be open September 6, 2016
Lunch will be provided and cost is FREE!

6 Learning & Leveraging: “Leading a Multi-Generational Work Force”

October 27, 2016 from 8:00 AM - 12:00 PM or 1:00 PM - 5:00 PM

Receptions, Inc., 4450 Eastgate South Dr, Cincinnati, OH



The workshop will encourage involvement and participation as well as challenge people to examine their own Generational differences. You will be able understand and appreciate the strengths people of various Generations and Genders can bring to your team. A prior attendee commented. “I have a greater view of all the age demographics and why they do the things they do. The seminar was very well executed and presentation was sharp. We all took home more than we came with.

Click [HERE](#) to register

7 CITTS for INSTRUCTIONAL LEADERS

November 21st from 8:30 AM-4:00 PM

Sullivan University Learning Center for Address: 207 Grandview Drive, Ft. Mitchell, KY 41017



Register and learn about the following:

- Getting Started with Schoolnet
- How do I access reports to monitor how my students are performing?
- How do I generate reports to get additional information?
- Understanding What Data Is Available to Teachers
- How do I create and administer assessments to monitor student learning?
- How do I utilize CIITS to support instructional planning in my district?

CLICK [HERE](#) TO REGISTER

8 OECD Workshop: Learn more about the Pisa-like assessment



Our co-sponsored OECD Test for Schools- Based on PISA event is now official. We (NKCES and NWEA) are making the final details for this presentation for Friday, Nov. 4th at the Northern Kentucky Children’s Home in Covington, which will focus on **“Building a Globally Competitive System Now”!**

In a somewhat different format, we will be inviting member districts to attend and bring a team comprised of school and community leaders (school board, business, etc.). Our event will get underway at 10:30 AM with lunch to follow. Also for your information is an opportunity to attend an interesting webinar on one of OECD’s newest reports on school leadership for learning.

An announcement and invite will be coming to you soon for the Nov. 4th event. In the meantime, please begin to think about how you might want to assemble a school and community team. For questions, please contact either Michele Augsback at NKCES or Rob Johnson at NWEA. We are looking forward to an informative and enjoyable session.

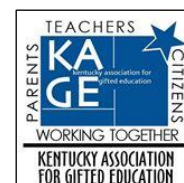
9 EXPLICIT INSTRUCTION FOR SPECIAL EDUCATION with ANITA ARCHER

January 5 – 6, Gateway Community & Technical College, 8:30AM-3:30PM



<p>Gateway College 500 Technology Way Florence, KY 41042</p>
<p>Thursday, January 05 and Friday, January 06</p>
<p>8:30 A.M. – 3:30 P.M.</p>
<p>MEMBERS: \$25.00</p>
<p>NONMEMBERS: \$100.00</p>
<p>CONTINENTAL BREAKFAST LUNCH IS PROVIDED</p>

Explicit instruction is systematic, direct, engaging, and success oriented—and has been shown to promote Achievement for all students. This highly practical and accessible training gives Special Education Administrators and Special Education teachers the tools to implement explicit instruction in any grade level or content area. The authors are leading experts who provide clear guidelines for identifying key concepts, skills, and routines to teach; designing and delivering effective lessons; and giving students opportunities to practice and master new material. Sample lesson plans, lively examples, and reproducible checklists and teacher worksheets enhance your learning experience. [Click HERE to register](#)



10 MIDDLE SCHOOL LEADERSHIP SYMPOSIUM/NKAGE

December 8, 2016, Thomas More College, 9:00 AM – 12:00 PM



Tori Murden McClure is the President of Spalding University in Louisville, Kentucky. Prior to becoming the President of Spalding, Tori served for six years as the Vice President for External Relations, Enrollment Management, and Student Affairs. She has worked as chaplain of Boston City Hospital, as policy assistant to the Mayor of Louisville, director of a shelter for homeless women, and has worked with the boxer and humanitarian Muhammad Ali. Tori may be best known as the first woman and first American to row solo and unassisted across the Atlantic Ocean. Also, she was the first woman and first American to travel over land to the geographic South Pole. Tori is an accomplished mountaineer and has completed major climbs on several continents. She is a graduate of the National Outdoor Leadership School semesters in Alaska and Kenya.

Tori is a graduate of Smith College. She holds a Masters in Divinity from Harvard Divinity School, a Juris Doctorate from the University of Louisville Brandeis School of Law, and a Masters of Fine Arts in Writing from Spalding University. Her book *A Pearl in the Storm* was published by Harper Collins. She is licensed to practice law in the Commonwealth of Kentucky. Tori and her husband, Charles, better known as “Mac,” reside in Louisville, Kentucky.

BE IN THE KNOW WITH **NKCES**

October 2016

UPCOMING PLC'S

TITLE I & TITLE II – October 21, 2016, 8:30 AM - 9:45 AM, NKCES, PD Room
 NKY New Teacher – October 24, 2016, 4:00 PM - 5:30 PM, Lloyd High School Library
 PL Committee – October 21, 2016, 10:00 AM - 12:00 PM, NKCES PD Room
 Physical Education Regional PLC – October 24, 2016, 4:00 PM - 5:30 PM NKCES PD Room
 Grants Consortium – October 5, 2016, 10:30 AM - 11:30 AM, Erlanger City Building
 EL/Title III – October 18-20, ACCESS Test Administrators Meetings – Time TBA

NKCES UPCOMING BOARD OF DIRECTORS MEETING

NKCES BOARD OF DIRECTORS MEETING – October 12, 2016
 Gateway Community & Technical College, Union, KY
 Superintendents' Meeting – 8:30 AM-9:30 AM
 Board of Directors – 9:30 AM-12:00 PM
 Click [HERE](#) for information and agenda



CHECK OUT OUR UPCOMING FALL TRAININGS

Click [HERE](#) to register

OCTOBER 6, 2016 WRITING WORKSHOP

Thursday October 6, 2016 from 4:00 PM to 6:00 PM

During this session participants will be explore the 3 modes of writing through the use of Writing Pathways by Lucy Calkins, each participant will receive a copy of the book.

OCTOBER 7, 2016 VIPS - KSB COLLABORATION MEETING

Friday October 7, 2016 from 8:30 AM to 3:30 PM

Collaboration between Kentucky's preschool teachers and teachers of the visually impaired.

OCT 12, 2016 - TRANSITION: ASSESSMENT & PLANNING RESOURCES

Wednesday October 12, 2016 from 1:00 PM to 4:00 PM

The training is developed for teachers and administrators working with students with disabilities in planning for future schooling/training, employment and independent living. FREE resources for each participant

OCTOBER 19, 2016 NKCES BOARD OF DIRECTORS MEETING - OCTOBER MEETING

Wednesday October 19, 2016 from 8:30 AM to 3:00 PM

Superintendents Meeting-8:30-9:30 Board of Directors-10:00-11:30 Superintendent Roundtable-12:00-3:00



BE IN THE KNOW WITH NKCES

October 2016

[OCTOBER 24, 2016 - PHYSICAL EDUCATION REGIONAL PLC MEETING](#)

Monday October 24, 2016 from 4:00 PM to 5:30 PM

2016 - 2017 PHYSICAL EDUCATION REGIONAL PLC NKCES PD - Room - PLC Lead: Angela Hedenberg

[OCTOBER 28, 2016 SAFE & CIVIL SCHOOLS: MULTI-TIERED SYSTEMS OF BEHAVIORAL SUPPORT](#)

Friday October 28, 2016 from 8:30 AM to 3:30 PM

Donna Meers, Safe and Civil Schools' Behavioral Support Consultant: We will discuss strategies to decrease non-compliance and how to recognize the cycle of anger and ways to de-escalate behavior.

[NOVEMBER 1, 2016 LOW INCIDENCE & ASD PLC](#)

Tuesday November 1, 2016 from 3:00 PM to 4:30 PM

This regional PLC is designed to connect special educators who work with students with low incidence disabilities and/or ASD. This PLC will work to identify areas of need and focus for future professional learning opportunities.

[NOVEMBER 9, 2016 NKCES BOARD OF DIRECTORS MEETING - NOVEMBER MEETING](#)

Wednesday November 9, 2016 from 8:30 AM to 3:00 PM

Superintendents Meeting-8:30-9:30 Board of Directors- 10:00-11:30 Superintendent Roundtable-12:00-3:00

[NOVEMBER 10, 2016 MIDDLE SCHOOL MATH PLC](#)

Thursday November 10, 2016 from 3:30 PM to 4:30 PM

We are one region that has the opportunity to combine Resources, have a voice in targeted Professional Development and share ideas with fellow teachers.

[NOVEMBER 14, 2016 NKY INSTRUCTIONAL COACHES' PLC](#)

Monday November 14, 2016 from 2:30 PM to 4:00 PM

Please join us as we begin a regional dialogue and resource sharing to better supports teachers and great classroom instruction in NKY.

[NOVEMBER 28, 2016 - PHYSICAL EDUCATION REGIONAL PLC MEETING](#)

Monday November 28, 2016 from 4:00 PM to 5:30 PM

2016 - 2017 PHYSICAL EDUCATION REGIONAL PLC NKCES PD - PLC Lead: Angela Hedenberg

[NOVEMBER 30 - DECEMBER 1, 2016 CBB ADDITION & SUBTRACTION ELEMENTARY](#)

Wednesday November 30, 2016 at 8:30 AM EST -to- Thursday December 1, 2016 at 3:30 PM

This 2 day training will focus on building a strong conceptual foundation for mathematics using the Concrete Representational-Abstract sequence of teaching/learning/C-R-A). Participants will examine student misconception, revisit their own understanding of KCAS and Practice Standards all in an effort to promote higher-order student thinking.