



Strategic Planning Session

Setting our Vision and Goals

Stephen Pruitt, Commissioner
Karen Dodd, Chief Performance Officer

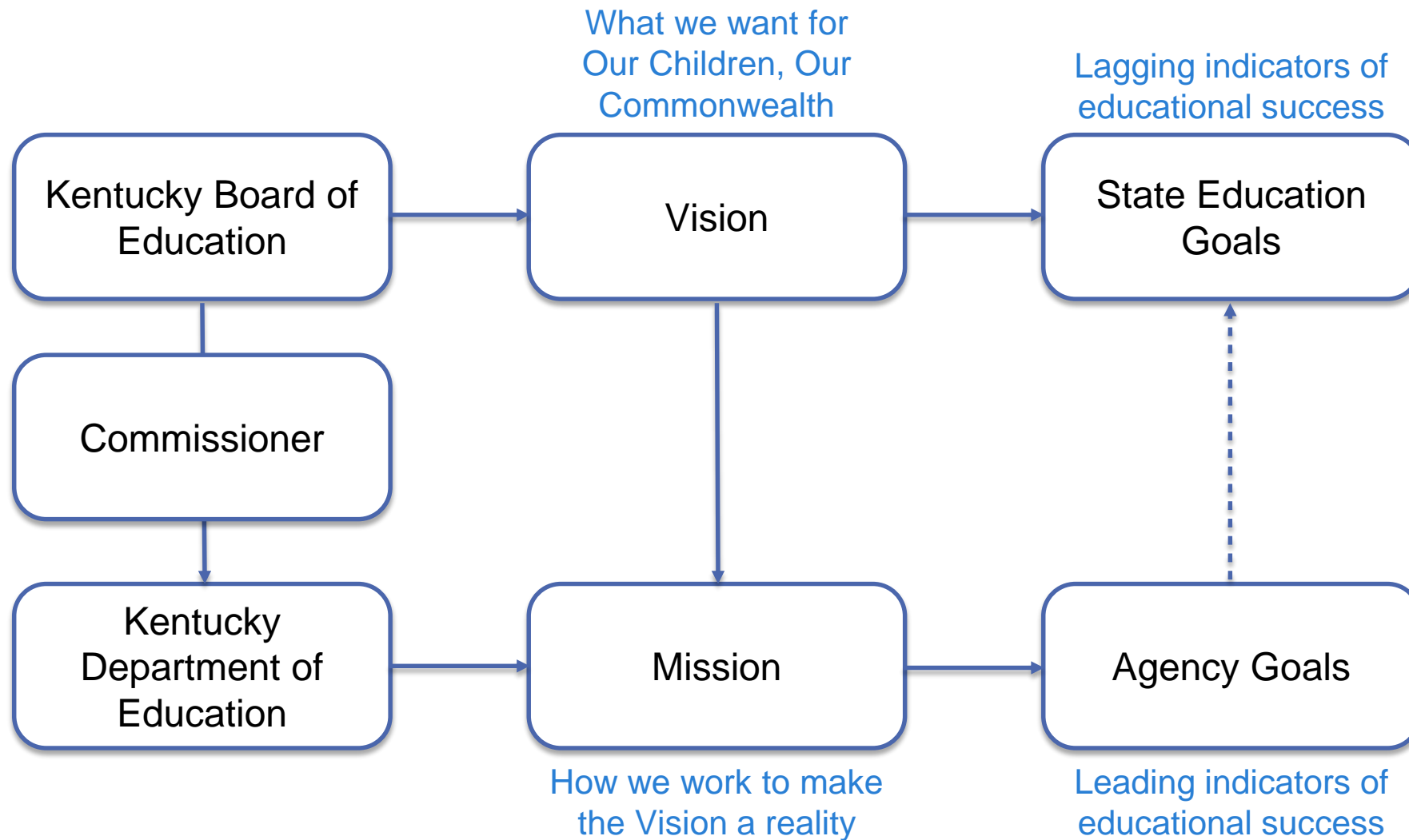
October 4, 2016

Topics

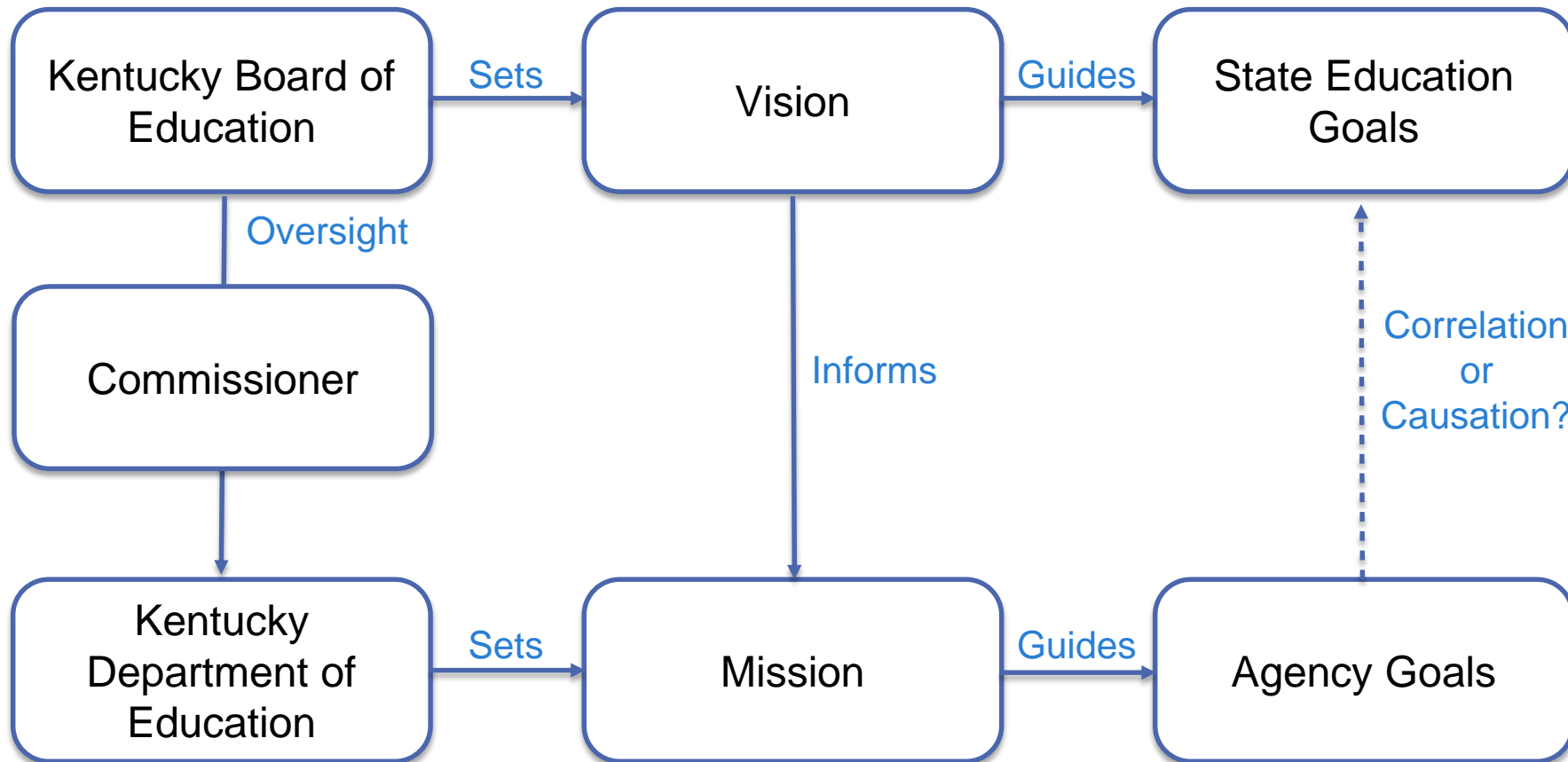
- ▶ Relationship between KBE, KDE, Vision, Mission, and Goals
- ▶ Defining our Vision
- ▶ Defining our State Goals
- ▶ Discussion



Vision, Mission, and Goals



Vision, Mission, and Goals



Defining our Vision: KBE Feedback

- ▶ Focus on preparedness for life
- ▶ Key phrases:
 - ↵ Contributing members of society/community
 - ↵ Responsible citizenship
 - ↵ Quality of life



Defining our Vision: Staff Survey

- ▶ Student-centered
- ▶ Equity,
Achievement,
Integrity
- ▶ Future-oriented
(beyond CCR)



Defining our Vision



Who?

Every student

What will they be?

empowered and ready

To what end?

for _____ .

- ▶ a successful future.
- ▶ their future.
- ▶ success.



Decision Point:

Do we have consensus on a Vision for
Our Children, Our Commonwealth?

The logo is a circular emblem with a dark blue outer ring. Inside the ring, the words "Kentucky Department of" are written in white, serif font, curving along the top. The words "Our Children," are written in a smaller, blue, serif font, positioned above a central graphic. The graphic is a white silhouette of the state of Kentucky, filled with a golden-yellow color. Inside the state outline, there are silhouettes of three children and one adult figure holding a book. Below the state outline, the words "Our Commonwealth" are written in a blue, serif font. The word "Education" is written in a large, white, serif font, curving along the bottom of the dark blue ring.

-
- A word cloud of education-related terms. The words are arranged in a roughly rectangular shape, with 'students' at the bottom. The words are in various sizes and orientations, mostly in shades of gray. The words include: academic, job, student, ensure, curriculum, middle, schools, continue, opportunities, teachers, based, system, reduce, assessment, workforce, professional, goals, education, scores, children, readiness, standards, accountability, practices, preschool, receive, grades, career, act, arts, college, learners, closing, options, technology, literacy, gaps, grade, staff, training, learn, data, local, post, leaders, reach, model, growth, graduates, effective, improve, create, kids, kindergarten, time, adults, ready, 12, classroom, pathways, rates, funding, rounded, technical, equity, Kentucky, future, global, focus, administrators, communities, society, skills, current, rate, parents, community, teaching, access, stop, experiences, ky, resources, financial, secondary, ability, equitable, improve, educators, graduating, communication, commonwealth, teach, graduation, continuous, instruction, prepare, develop, math, provide, school, including, home, districts, level, individual, increase, success, serve, reading, increased, preparing, achievement, taught, district, educational, equal, learning, classroom, support, quality, services, prepared.

What kinds of state education goals could we set?

- ▶ Premature to define specific state goals given that we are designing a new accountability model.
- ▶ Measures of student performance, which could include the next generation of readiness, student achievement/growth, etc.
- ▶ Student performance measures would help assess achievement and equity.
- ▶ Measures of opportunity and access, which could include measures proposed by our accountability working groups.





Discussion?

Next Steps

- KBE SMART goals will be presented to the Board in December
- Delivery trajectories with 2016 results

