



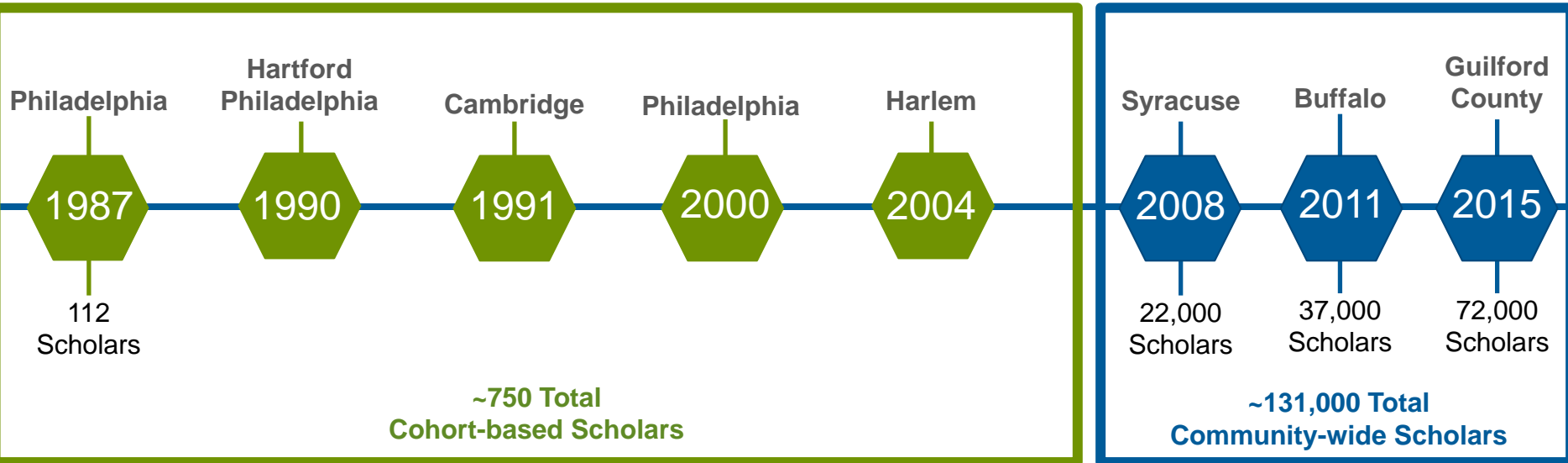

SAYYES
TO EDUCATION
sayyestoeducation.org

Overview Presentation

George's Commitment

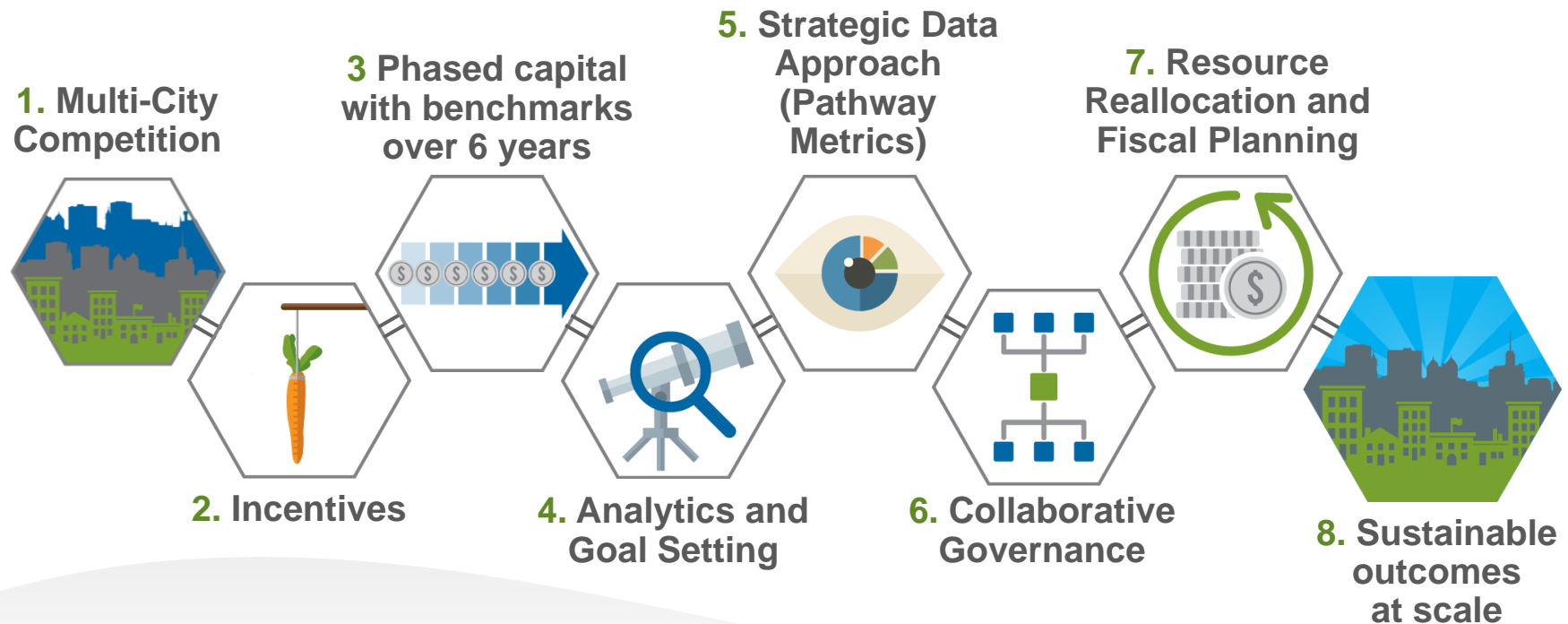


29 Years of Experience and Learning



- **Cohort Strategy:**
Philadelphia, Hartford, Cambridge, and Harlem
- **Community-wide Strategy:**
Syracuse, Buffalo, and Guilford County

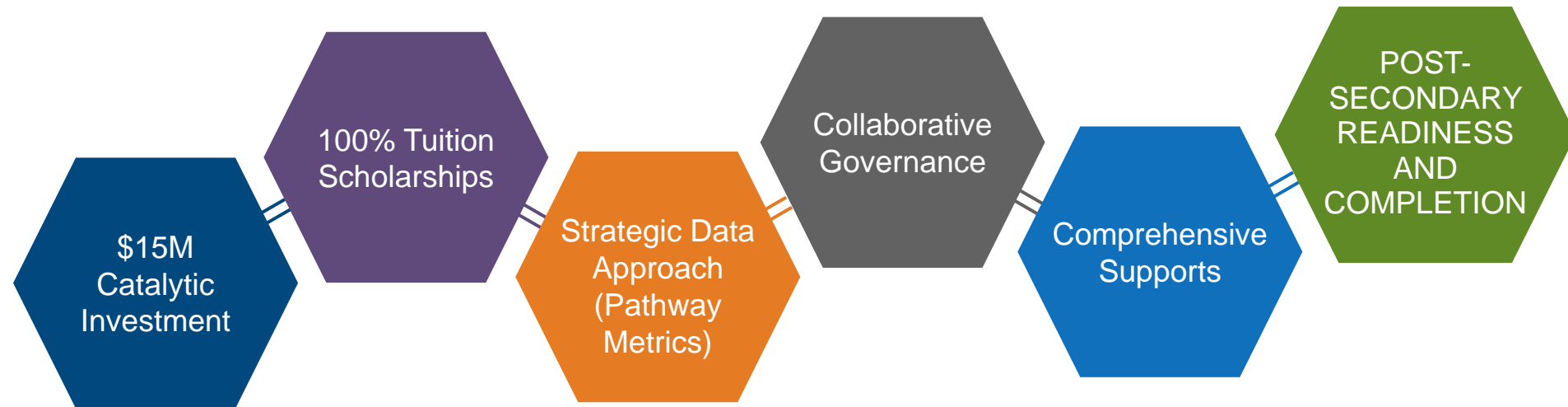
Moving From Cohorts to Citywide: A Sustainable Civic Approach



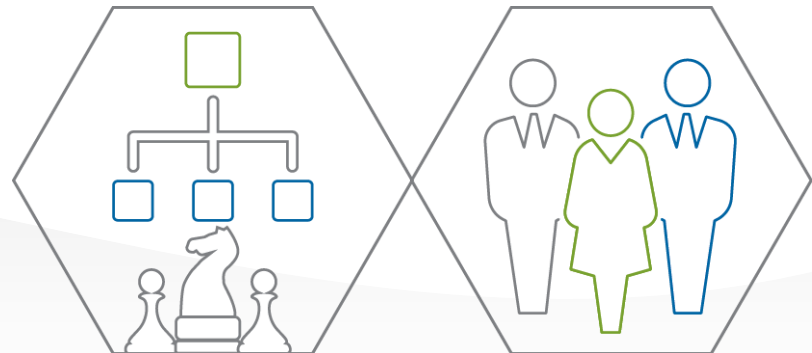
City/County as the Unit of Change



The Say Yes Theory of Action

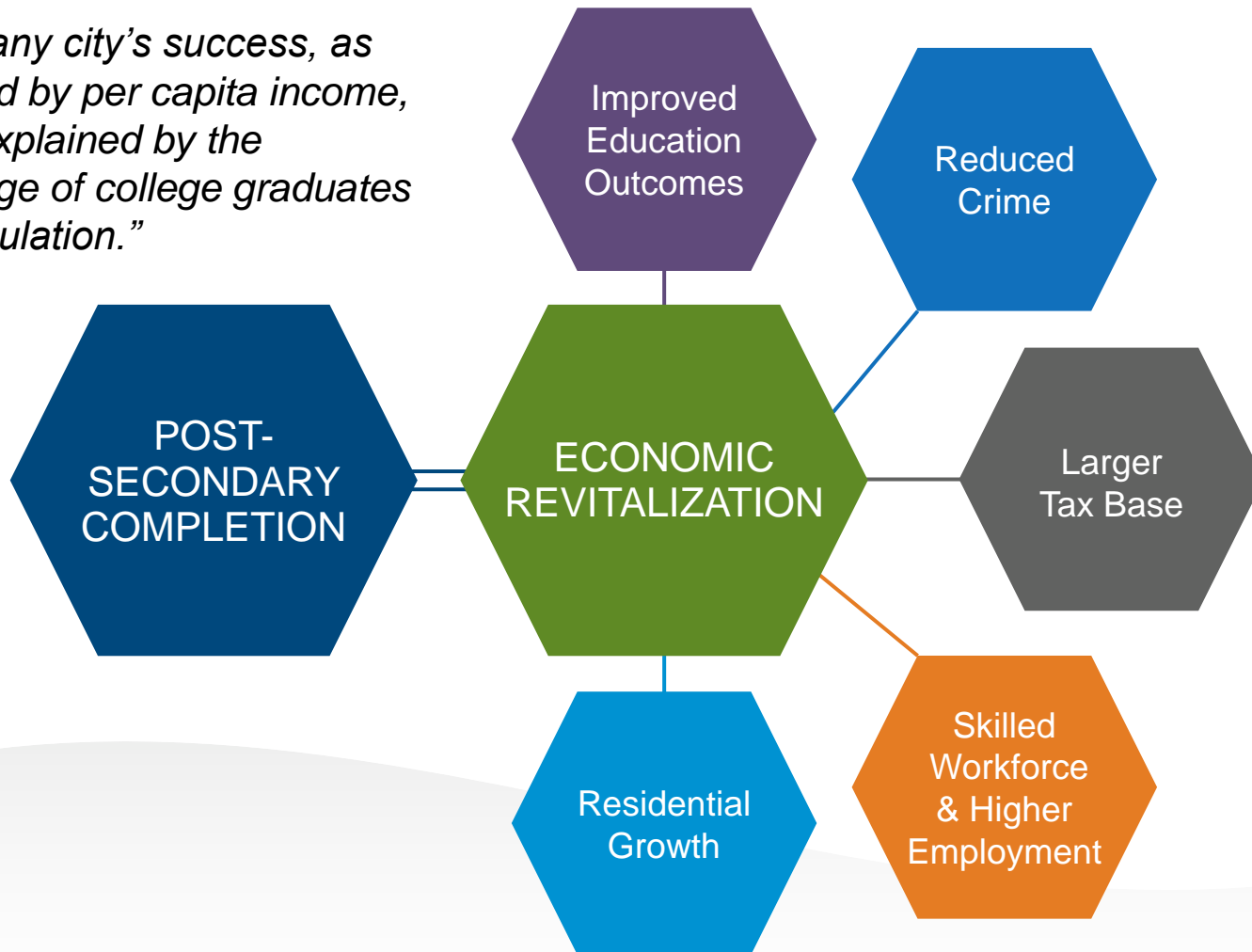


Say Yes recognizes the critical roles of both **STRUCTURES/STRATEGIES** and **CULTURE** in changing postsecondary completion outcomes sustainably, at scale.



Research Supports the Link to Aspirational Say Yes Outcomes

“58% of any city’s success, as measured by per capita income, can be explained by the percentage of college graduates in its population.”



Incentives for Collaboration: 100% Tuition Scholarship

SAY YES OFFERS PARTNER COMMUNITIES:

Public Institution Scholarships

- A Local and **Universal Scholarship** model
- A catalyst and **framework for local fundraising** around the public institution scholarship

Private Institution Scholarships

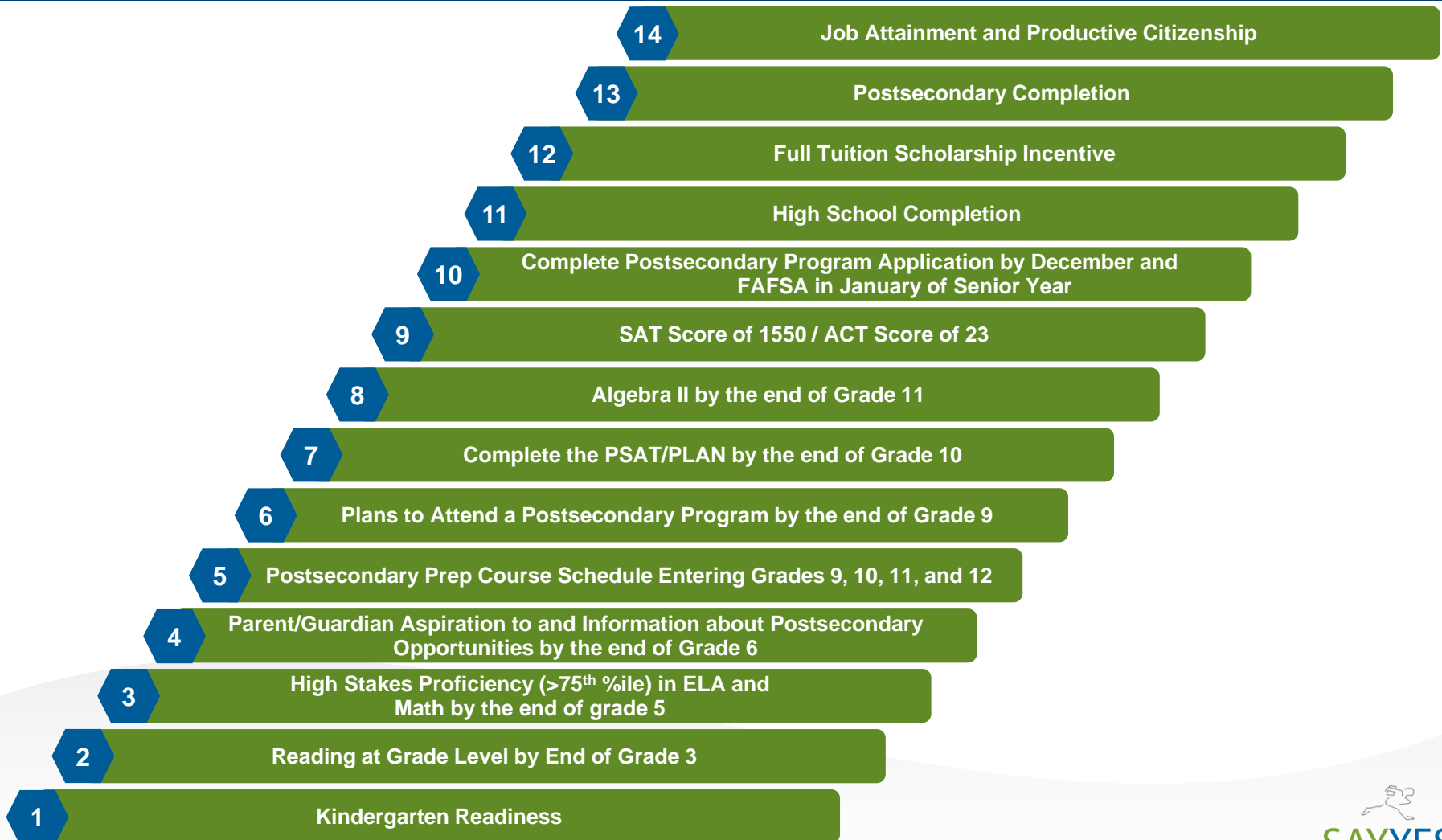
- An ongoing scholarship-bearing partnership—called the **Say Yes Higher Education Compact**—with over **100 private colleges and universities** nationally
- Need based scholarship opportunity

Long-term **administration of the scholarship**

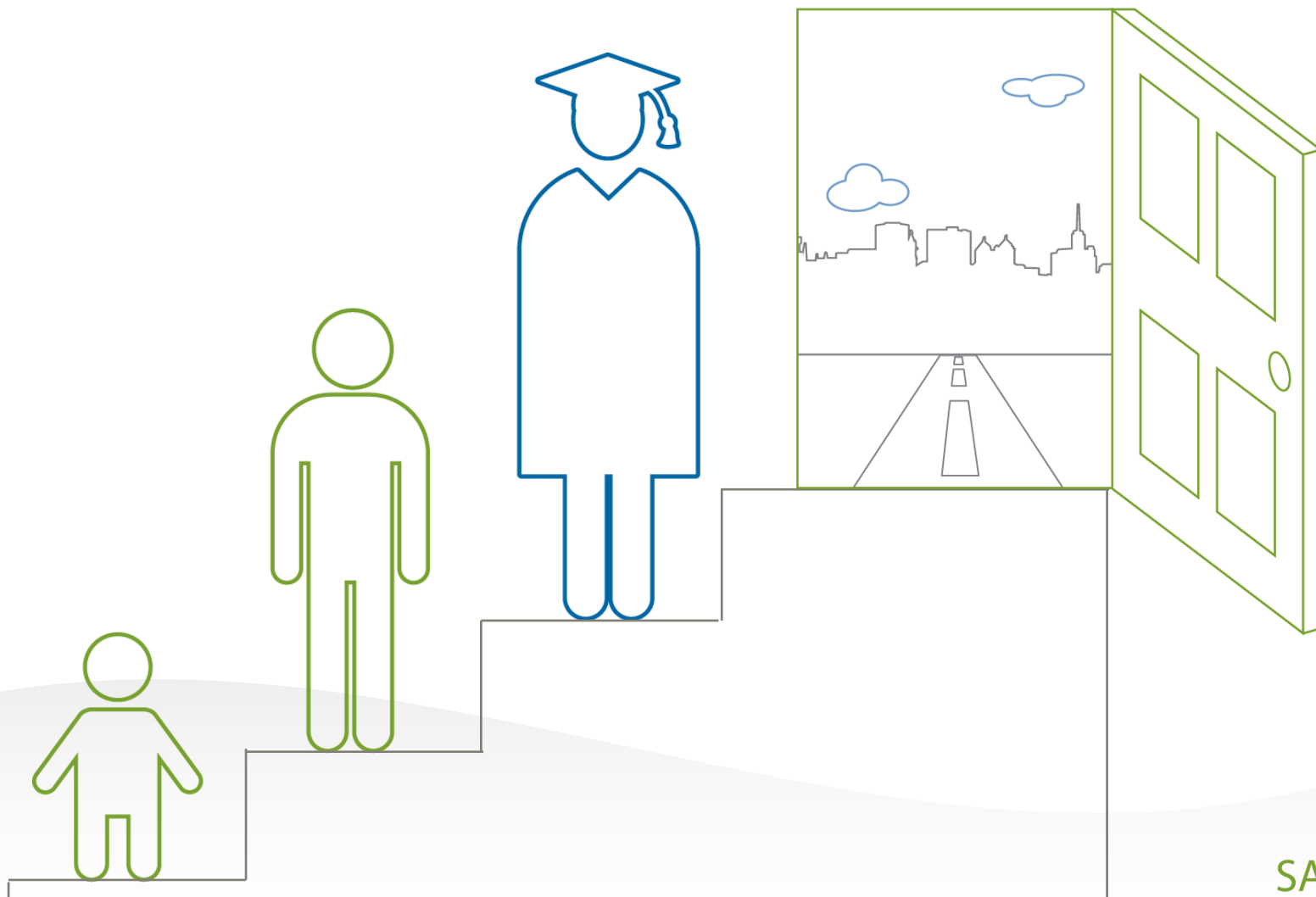
Growing the Say Yes Higher Education Compact — in 21 states and Washington DC

1. Bates College
2. Bennett College
3. Boston University
4. Bowdoin College
5. Brown University
6. Bryant & Stratton College
7. Bucknell University
8. California Institute of Technology
9. Canisius College
10. Carleton College
11. Claremont McKenna College
12. Clarkson University
13. Colby College
14. Colgate University
15. Colorado College
16. Columbia University
17. Cooper Union
18. Cornell University
19. Crouse Hospital College of Nursing
20. Daemen College
21. Dartmouth College
22. Davidson College
23. Denison University
24. Drew University
25. Drexel University
26. Duke University
27. D'Youville College
28. Franklin & Marshall College
29. George Washington University
30. Georgetown University
31. Goodwin College
32. Greensboro College
33. Guilford College
34. Hamilton College
35. Harvard University
36. Harvey Mudd College
37. High Point University
38. Hilbert College
39. Hobart and William Smith Colleges
40. Houghton College
41. Ithaca College
42. Johns Hopkins University
43. Kenyon College
44. Laurel University
45. Le Moyne College
46. Lehigh University
47. Lesley University
48. Lycoming College
49. Marist College
50. Massachusetts Institute of Technology
51. Medaille College
52. Molloy College
53. Monroe College
54. Muhlenberg College
55. New York Institute of Technology
56. Niagara University
57. Northeastern University
58. Northwestern University
59. University of Notre Dame
60. Oberlin College
61. Occidental College
62. Paul Smith's College
63. Pitzer College
64. Pomona College
65. Princeton University
66. Providence College
67. Reed College
68. Rensselaer Polytechnic Institute
69. Rhodes College
70. Rice University
71. Rochester Institute of Technology
72. Salem College
73. Sarah Lawrence College
74. Scripps College
75. Sewanee: University of the South
76. Smith College
77. Springfield College
78. St. Bonaventure University
79. St. Joseph's College of Nursing
80. Stanford University
81. Swarthmore College
82. Syracuse University
83. Texas Christian University
84. The New School (Parsons School of Design, Eugene Lang College, College of Performing Arts)
85. Trinity College
86. Trocaire College
87. Tufts University
88. Tulane University
89. Union College
90. University of Chicago
91. University of Pennsylvania
92. University of Rochester
93. University of San Diego
94. University of Southern California
95. Vanderbilt University
96. Vassar College
97. Villa Maria College
98. Wake Forest University
99. Washington University in St. Louis
100. Wellesley College
101. Wesleyan University
102. Williams College
103. Yale University

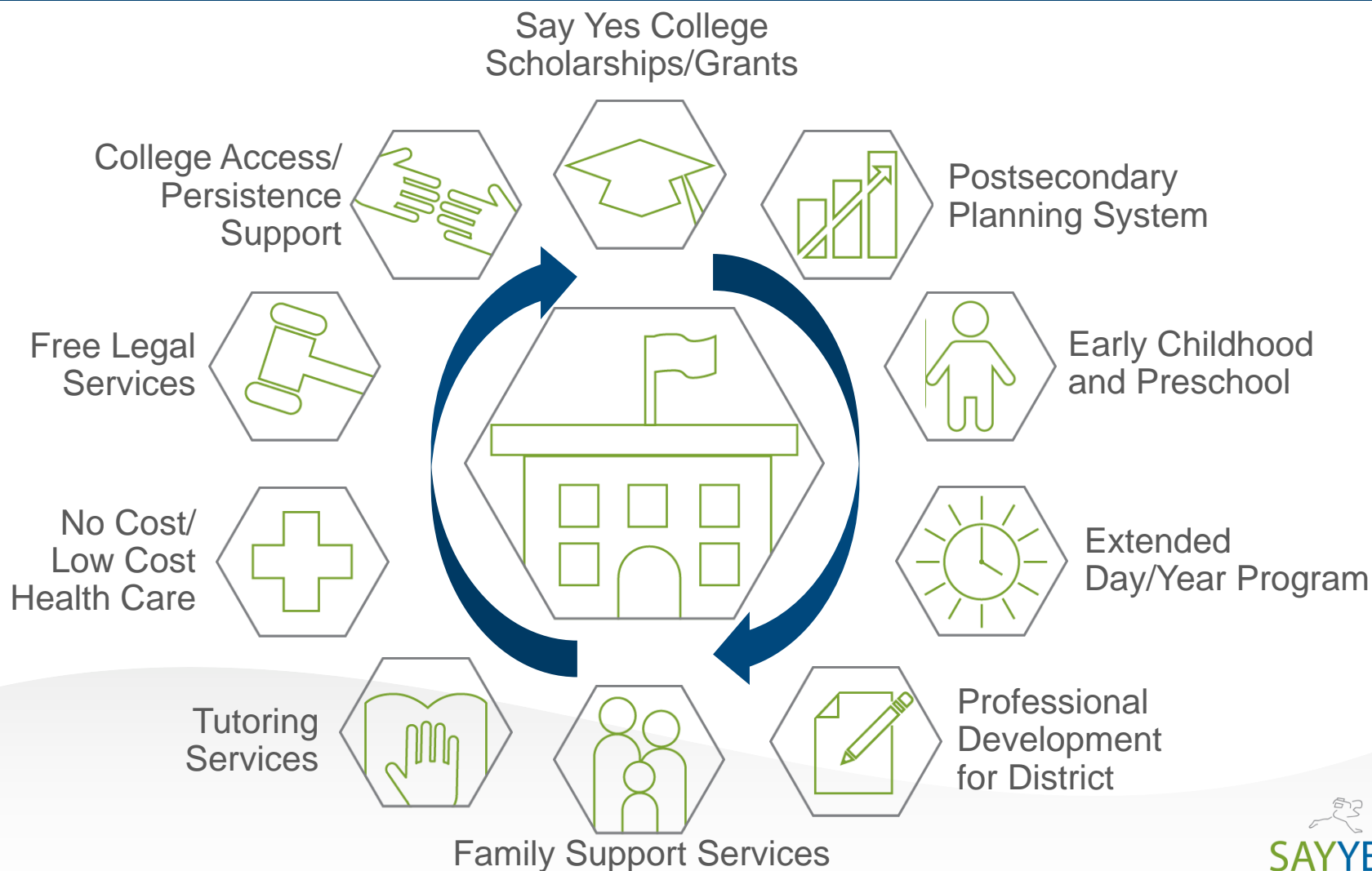
Benchmarking the Pathway to Postsecondary Success



Supporting Students Across the Whole Developmental Trajectory



Comprehensive Supports



Strategic Data Approach

POSTSECONDARY PATHWAY METRICS



Student Level

- Individual student growth plans
- Over 30 evidence-based indicators
- Case management approach

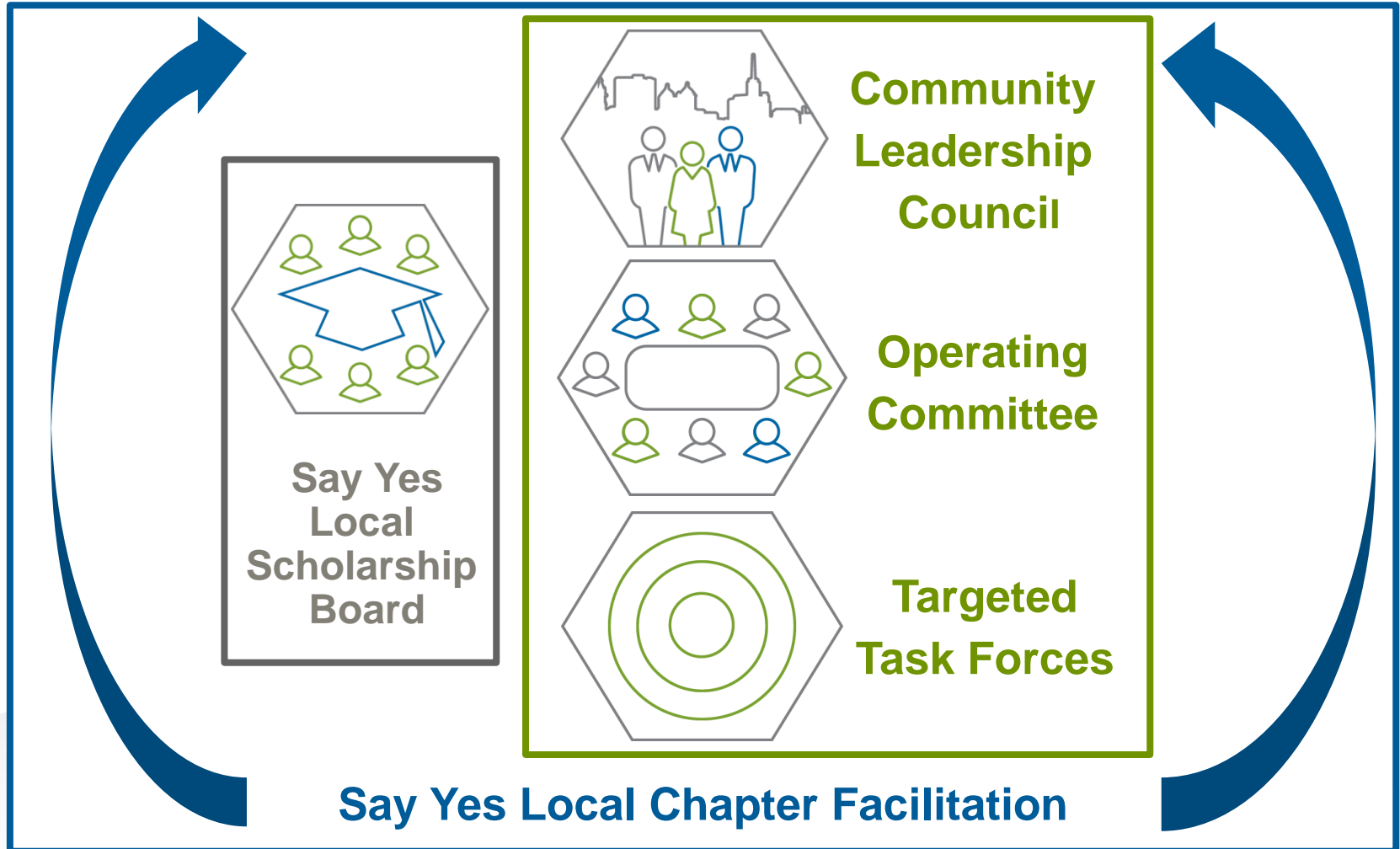
School and District Level

- Baseline analytics and Postsecondary planning system (PPS) informs district goal setting and action

Community Level

- Data drives strategic allocation and coordination of resources
- Data Informs goal setting and ensures transparency

Collaborative Governance



Differentiating the Say Yes Strategy

Traditional Approaches



“Silver Bullets”

VS

Say Yes's Approach



Comprehensive
Supports



“Super heroes”

VS

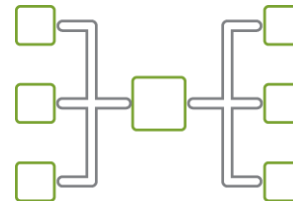


Community Owned



Silos

VS



Collaborative
Governance



Short-term
Grants

VS



Committed Investment

Say Yes's Track Record



- Over **131,000 public school students** have access to Say Yes support services and postsecondary scholarships



- **More than 6,000 public school students** have gone off to college or other postsecondary programs with Say Yes support



- In 2014, for **every \$1 Say Yes spent in Buffalo**, it **leveraged \$15** in external investments toward student supports



- The local Say Yes Scholarship funds in Buffalo and Syracuse have awarded Say Yes Scholars over **\$12 million** in direct scholarships, and across all three communities over **\$85 million** as been raised to date toward the local scholarship funds

Say Yes's Track Record

Within the first three years of Say Yes Buffalo:



- **34 school-based mental health clinics**, and mobile health clinics are in the works



- **5 school-based legal clinics** have opened



- **100% of school buildings** have the Postsecondary Planning System and are staffed with Family Support Specialists (across 55 buildings)



- Summer camp was offered at **35 sites** through partnerships with **33 community based service providers** in 2015, with a long-term sustainable funding plan through 2021

Say Yes's Track Record in Buffalo



27%

- High school graduation has increased by **13 percentage points** (48% in 2012 to 61% in 2015)



18%

- Postsecondary matriculation has increased by **10 percentage points** (from 57% in 2012 to 67% in 2015)



>1500

Students
since 2012

- Increasing public school enrollment each year since the launch of Say Yes, following 12 years of decline