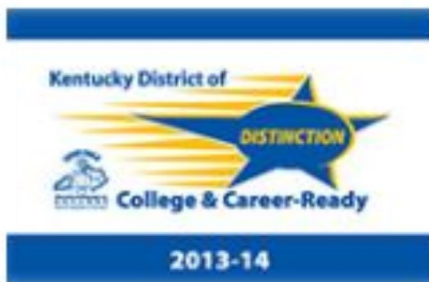
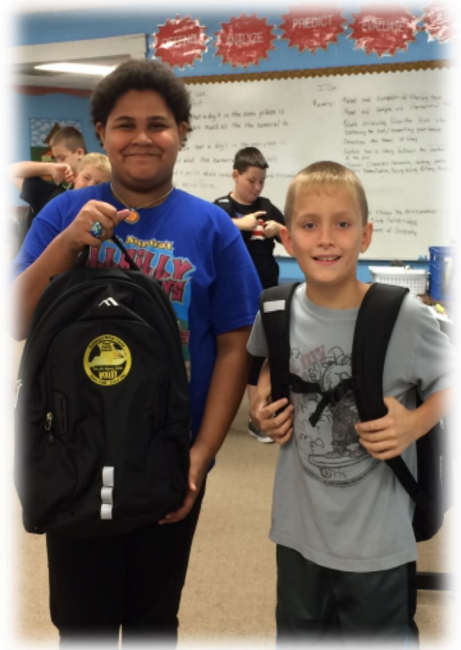
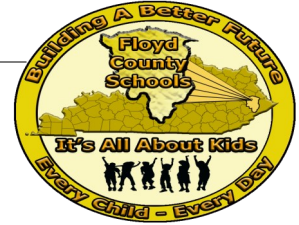


Floyd County Schools Annual Report 2016





Floyd County Schools

Vision: **Building A Better Future for Every Child- Every Day**

Mission: **Learning for All, Whatever it takes**

Motto: It's All About Kids

Core Beliefs:

**Education is a shared responsibility—
Achievement requires the commitment and participation of staff, students, family and community.**

All students can learn—All students have potential that can and will be developed.

Rates of learning vary—The time required for mastery has no bearing on the value of the learner.

All students have unique skills and talents—Individual abilities must be identified and nurtured.

**High self esteem enhances success—
People develop best through sincere praise and validation.**

Goals:

- ♦ ***Top 10 School District***
- ♦ ***CCR rate of 90%***
- ♦ ***Remain fiscally solvent/efficient***
- ♦ ***ACT 19.5***
- ♦ ***KPREP 76***
- ♦ ***Attendance 96%***

CONTENTS

| | |
|---|-----------|
| District Vision, Mission | 2 |
| Board of Education | 3 |
| Superintendents Message | 4 |
| District Information | 5 |
| College/Career Readiness | 6 |
| Top 10 School District | 9 |
| Fiscally Solvent & Efficient | 19 |
| Did You Know | 21 |
| District Growth/ 2017 | 32 |





Floyd County Board of Education Members



Jeff Stumbo
Board Chairman
District 3



Linda Gearheart
Board Vice Chair
District 1



Dr. Chandra Varia
Board Member
District 2

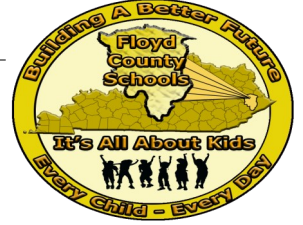


Rhonda Meade
Board Member



Sherry Robinson
Board Member
District 5

Board of Education Focused on District Motto: "It's All About KIDS"



Message from the Superintendent

Greetings,

On Behalf of Team Floyd, I am once again honored to present the Floyd County Schools Annual Report. 2016 has been another amazing year of teaching and learning! This year our district was ranked 15th on the state assessment and was 1 of only 5 school districts in Kentucky that achieved the classification as a "District of Distinction", a classification we have earned for two consecutive years. Additionally, our digital conversion initiative year two went extremely well with higher student engagement levels and higher student achievement reported. We are excited about year three beginning fall 16 as we will have over 3,000 devices in the hands of Floyd County student and teachers to continue to change the way we teach and ensure higher levels of learning for all KIDS. Also, 2016 has been a year for facility upgrades to ensure all Floyd County KIDS are in world class facilities. Our new high school, Floyd Central, our additions to BLHS and our new RLC building have all started in 2016 and are on schedule to open in 2017.

Floyd County continues to have a TEAM of 1,000+ that is second to none working for our KIDS on daily basis. It is an honor and a privilege to work with a team that remains committed to our district motto, "IT's All ABOUT KIDS".

Our Board team continues to provide exceptional leadership while embracing our district motto "It's All About KIDS". It is an honor serving on a board team that works together and remains committed to our district goals for our KIDS! We wish to say a special thank you to our board team for their outstanding leadership: Jeff Stumbo— Chair, Linda Gearheart-Vice Chair, Rhonda Meade, Dr. Chandra Varia and Sherry Robinson.

Floyd County Goals:

- ◆ Top 10 School District
- ◆ CCR rate of 90%
- ◆ Remain fiscally solvent/efficient
- ◆ ACT 19.5
- ◆ KPREP 76
- ◆ Attendance 96%

We trust you will find the information in our report informative. We ask that you celebrate our success with us while committing to join us in our work to address identified areas for growth. It is truly a privilege to serve our 6,000 KIDS, our 1,000+ team members and our community. We are committed to growth and we pledge to reach identified goals and establish the Floyd County School System as one of excellence for KIDS.

Honored to serve,

Henry Webb, Ed.D
Superintendent, Floyd County Schools



Floyd County Schools Information

FCS
Facebook
Page



With more than 6,000 (P-12) students Floyd County remains the 20th largest school district in Kentucky. In addition, our district's 5 P-5, 3 P-8, 2 Middle Schools, 1 6-12, 3 High Schools, 1 alternative school and a vocational center collectively make up the 15th ranked school district in Kentucky. We have over 1,000 outstanding team members serving our KIDS daily!

| School | Grade Range | Enrollment |
|--------------------------------------|-------------|------------|
| Duff Elementary | P-5 | 284 |
| May Valley Elementary | P-5 | 386 |
| Prestonsburg Elem | P-5 | 710 |
| McDowell Elementary | P-5 | 237 |
| Osborne Elementary | P-5 | 269 |
| Allen Elementary | P-8 | 441 |
| Betsy Layne Elementary | P-8 | 622 |
| Stumbo Elementary | P-8 | 318 |
| Adams Middle | 6th- 8th | 336 |
| Allen Central Middle | 6th- 8th | 316 |
| Prestonsburg High | 9th-12th | 459 |
| Allen Central High | 9th-12th | 374 |
| South Floyd | 6th-12th | 481 |
| Betsy Layne High | 9th-12th | 382 |
| Renaissance Learning | 9th-12th | 108 |
| District Total: Not including H/S-PS | | 5728 |





College/Career Readiness Rate 90%

| School Name | 2013 CCR | 2016 CCR (Includes Bonus) |
|----------------|----------|------------------------------|
| Allen Central | 44% | 100 |
| Betsy Layne | 53% | 100 |
| Prestonsburg | 48% | 100 |
| South Floyd | 43% | 100 |
| District Total | 47% | 100 |

**College/
Career
Readiness for
EVERY CHILD
continues to
be our “North
Star” in FC.
As you can
see from the
chart we have
made
significant
progress since
2013!
Additionally,
we surpassed
our goal of
90% during
2016! Special
Thank you to
our TEAM of
1,000+ who
continue to
raise the bar
to ensure
EVERY CHILD
is CCR while
working
toward Global
Competency!**



K-5 Career Day



Community Engineers work with FC Students



College/Career Readiness Rate 90%

FCECA

Floyd County Schools graduated our 39th student with high school diploma and an associates degree in 2016! The graduates in 2016 earned over \$780,000 in scholarships. Additionally, due to the outstanding leadership of our Board of Education and our partnership with BSCTC we now have our Floyd County Information Technology Academy. We will have 42 students in college during the 16 school year!!!!



**FLOYD COUNTY
GRADUATING SENIORS
EARNED OVER
\$5,780,000 in 2016!**



College/Career Readiness Rate 90%

Floyd County Graduation Rates

| School | Graduation Percent 2016 |
|--------------------|-------------------------|
| Allen Central High | 97.30% |
| Betsy Layne High | 96.70% |
| Prestonsburg High | 97.40% |
| South Floyd High | 97% |
| DISTRICT Avg. | 97.10% |

Floyd County had the highest graduation rate in history with 97.10%!
(Simple Average)

Good News

Earning college credit in high school

Almost 26% of the class of 2016 passed a dual credit course and /or college course, meaning they had the opportunity to gain college credit in high school and earned 2084 college hours.

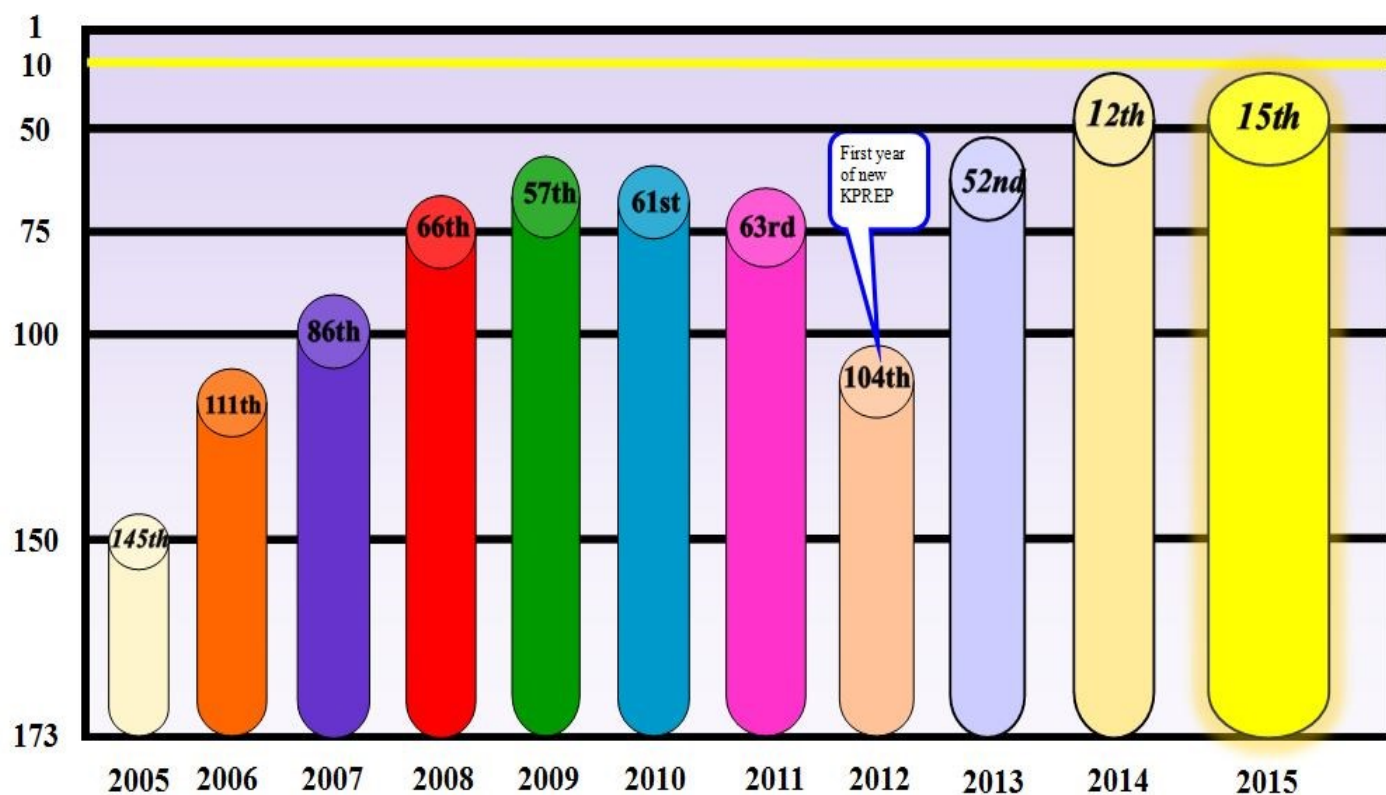
24% of the class of 2016 took Advanced Placement classes.





Top 10 School District Cont...

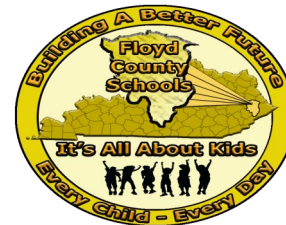
Floyd County Schools Ranking on State Assessment



*Floyd County Schools Ranked **15th** out of 173 school districts in Kentucky in 2016!
One of only five Districts of Distinction in the Commonwealth!*

Floyd County Digital Conversion: Over 2,000 Devices in the hands of KIDS!





Follow us on
twitter:
@Floyd
schools

**2016 ACT
Scores are
an ALL TIME
HIGH for FC.**

*Our District
has grown
almost two
full points
since the
requirement
for every
junior to take
the
assessment in
2009.*



GOAL- Top 10 School District

2016 FCS Data: ACT

| School | Year | English | Math | Reading | Science | Composite |
|---------------|-------------|-------------|-------------|-------------|-------------|-------------|
| Allen Central | 2013 | 16.6 | 16.8 | 17.8 | 18 | 17.5 |
| | 2014 | 18.4 | 18.4 | 19.4 | 19.5 | 19.2 |
| | 2015 | 17.5 | 17.4 | 18.4 | 18.1 | 17.9 |
| | 2016 | 18.3 | 17 | 18.1 | 18 | 18.1 |
| Betsy Layne | 2013 | 16.5 | 17.4 | 17.8 | 18.3 | 17.7 |
| | 2014 | 17.4 | 17.8 | 17.2 | 19 | 17.9 |
| | 2015 | 18.6 | 18.9 | 19.5 | 19.2 | 19.2 |
| | 2016 | 17.9 | 17.9 | 19.4 | 18.8 | 18.6 |
| Pres-tonsburg | 2013 | 16.7 | 17.2 | 18.4 | 18.7 | 17.8 |
| | 2014 | 18.2 | 17.9 | 18.6 | 18.6 | 18.47 |
| | 2015 | 16.9 | 17.5 | 18.3 | 17.6 | 17.8 |
| | 2016 | 18 | 18.1 | 18.7 | 18.5 | 18.4 |
| South Floyd | 2013 | 16.9 | 16.9 | 18.4 | 18.3 | 17.9 |
| | 2014 | 17 | 17.3 | 18.1 | 18.5 | 17.9 |
| | 2015 | 16 | 15.6 | 17.7 | 17.1 | 16.8 |
| | 2016 | 19.3 | 17.9 | 19.9 | 19.6 | 19.3 |
| District | 2009 | 15.7 | 16.5 | 16.4 | 16.8 | 16.5 |
| | 2010 | 16.7 | 17 | 17.6 | 17.5 | 17.3 |
| | 2011 | 16.5 | 17.2 | 17.7 | 17.4 | 17.3 |
| | 2012 | 16.4 | 16.4 | 17.5 | 17.5 | 17.4 |
| | 2013 | 16.7 | 17.1 | 18.1 | 18.3 | 17.8 |
| | 2014 | 17.8 | 17.9 | 18.4 | 18.4 | 18.4 |
| | 2015 | 17.3 | 17.4 | 18.5 | 18 | 18.1 |
| | 2016 | 18.3 | 17.7 | 19 | 18.7 | 18.5 |



Top 10 School District Cont...

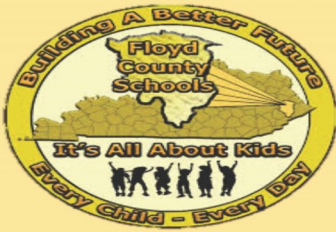


FCS Continues to focus on the ARTS with our annual Choral, Band & Art Festival! Additionally FCS continues to excel on the State Program Reviews!



Floyd County Schools Continue to focus on Global Competency. One example of Chinese Immersion at JMS during 16 School Year!

Top 10 School District Cont... Technology Integration & Learning

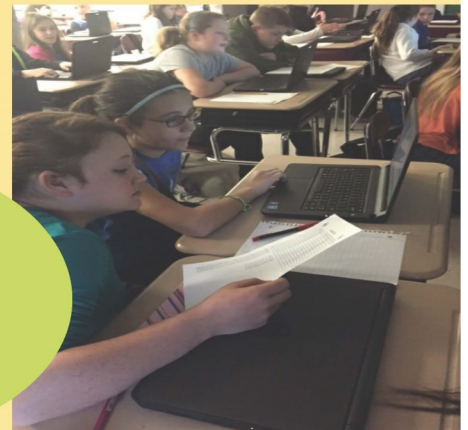


86%

of students feel the device meets their needs in the classroom

75%

of students submit their assignments electronically



K-Prep Scores

39% less novice in 5th grade Math

20% less novice in 5th grade Reading

100%
Wireless
Access



Creation of Digital Leadership Network for Administrators

80%

of students use their device 1 hour or more to work on homework after school each day

96%

of teachers feel technology enhances learning





Top 10 School District Cont...

FCS Data: Attendance

| District | 2008 | 2009 | 2010 | 2011 | 2012 | 2013 | 2014 | 2015 | 2016 |
|----------|------|------|------|------|------|-------|-------|-------|--------|
| Floyd | 92 | 92.2 | 93.7 | 94.1 | 95 | 94.66 | 94.74 | 94.31 | 95.21% |
| State | 94.2 | 94.2 | 94 | 94.6 | 94.8 | | 94.6 | 94.5 | TBD |

FCS had HIGHEST ATTENDANCE IN HISTORY IN 2016 !

Attendance continues to be a major emphasis in FC, to ensure that ALL KIDS have an opportunity to learn daily to ensure they reach their full potential and are College/Career Ready!



**NO EXCUSES
GO TO SCHOOL**





Top 10 School District Cont...

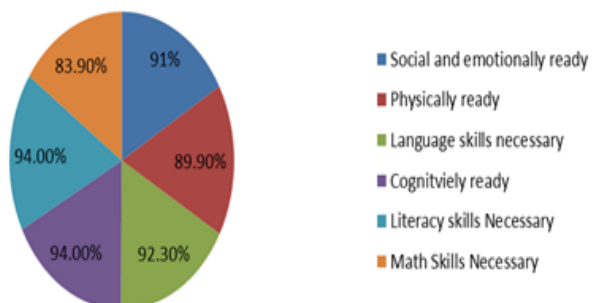
FCS Data: Early Childhood



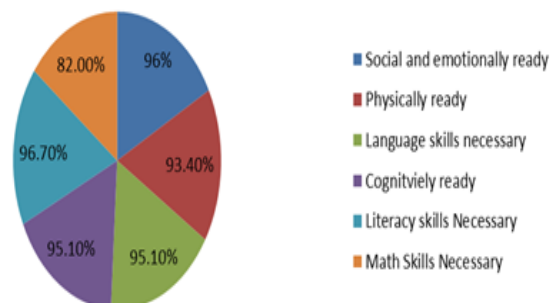
Floyd County Kindergarten Brigance Data for Enrolled Head Start/Preschool: **GREAT GROWTH!**

| School | 2014-2015 | | 2015-2016 | |
|---------------------|------------------------|--------------------|------------------------|--------------------|
| | Not Kindergarten Ready | Kindergarten Ready | Not Kindergarten Ready | Kindergarten Ready |
| District | 55.5 | 44.5 | 31 | 69 |
| Allen | 40 | 60 | 0 | 100 |
| Betsy Layne | 44 | 56 | 29 | 71 |
| Duff | 21 | 79 | 13 | 87 |
| Stumbo | 29 | 71 | 29 | 71 |
| May Valley | 41 | 59 | 32 | 68 |
| McDowell | 65 | 35 | 52 | 48 |
| Prestonsburg | 44 | 46 | 38 | 62 |
| Osborne | 62 | 38 | 10 | 90 |

Kindergarten Entry Readiness
Based on Benchmark Assessments
2014-2015



Kindergarten Entry Readiness
Based on Benchmark Assessments
2015-2016





TOP 10 District Cont...

FCS Data: Early Childhood Cont.



FLOYD COUNTY EARLY CHILDHOOD PROGRAM HAS BECOME A MODEL FOR THE STATE OF KENTUCKY! FC GREW FROM 44.5% TO 69% READY FOR KINDERGARTEN FROM 15 TO 16! ADDITIONALLY, WE IMPROVED IN VIRTUALLY ALL AREAS OF THE BRIGANCE. KIDS ENTERING KINDERGARTEN READY TO LEARN IS ESSENTIAL TO THEIR FUTURE SUCCESS! GREAT JOB, TEAM FLOYD!!!

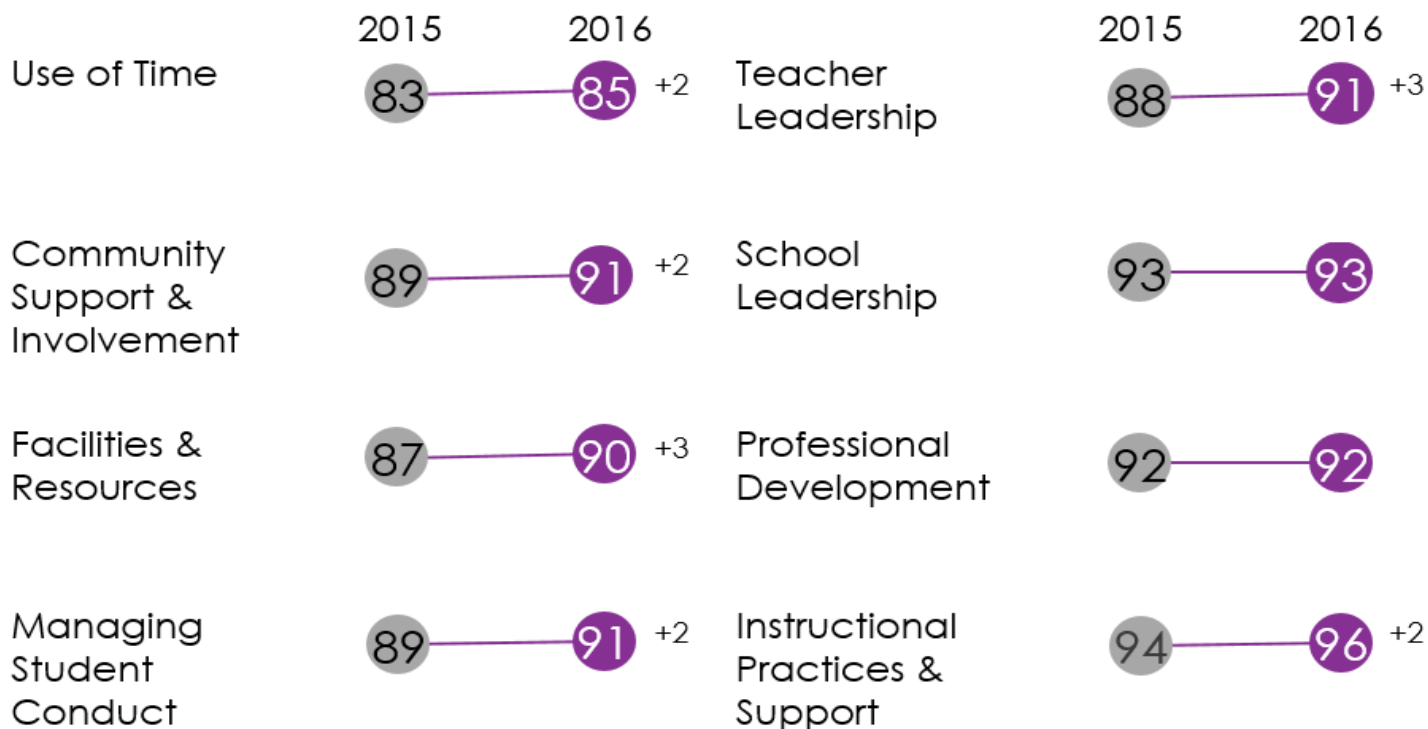


Top 10 School District Cont...

| FLOYD COUNTY SCHOOLS | TELL KY 2011 | TELL KY 2013 | TELL KY 2015 | TELL KY 2016 (375 Responses, 87%) |
|---|--------------------|--------------------|--------------------|---|
| Question | Floyd Co | Floyd County | Floyd Co | Floyd Co |
| Overall, my school is a good place to work and learn. | 86.8% | 88.3% | 91.1% | 92.5% |

FCS was one of two districts in KY selected to participate in the NTC grant to focus on TELL. TELL is a working conditions survey that is made up of 8 constructs linked to teacher retention and student achievement. The results for FC are excellent and we will continue to work to improve areas to ensure we have the very best working conditions for our outstanding TEAM!

TELL Construct Averages, 2015 & 2016

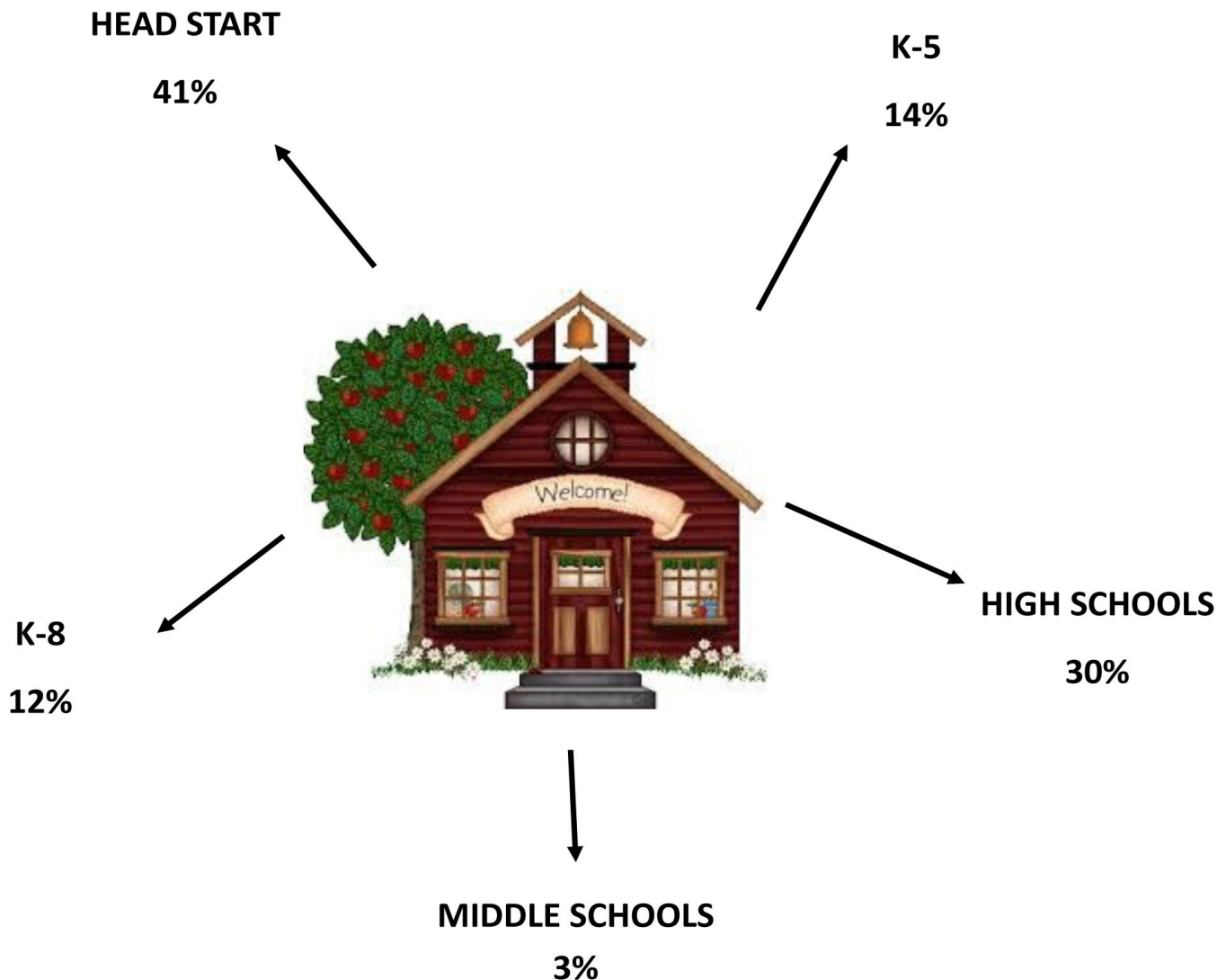




Top 10 School District Cont...

Engaging our Community!

Total Volunteer Hours: 80,587



Floyd County Schools Volunteer Hours at an ALL TIME HIGH. FC Parents/Community Members are key members of TEAM FLOYD!



Top 10 School District Cont...

FCS Board Ensuring World Class Facilities for KIDS!!!



**Construction on
Floyd Central
High School
Continues and is
on Schedule to
open in the Fall
of 2017!**

***Phase I at
Betsy Layne
High School
Underway in
2016!***



***Construction
on Renais-
sance Learn-
ing Center to
begin in June
2016!***

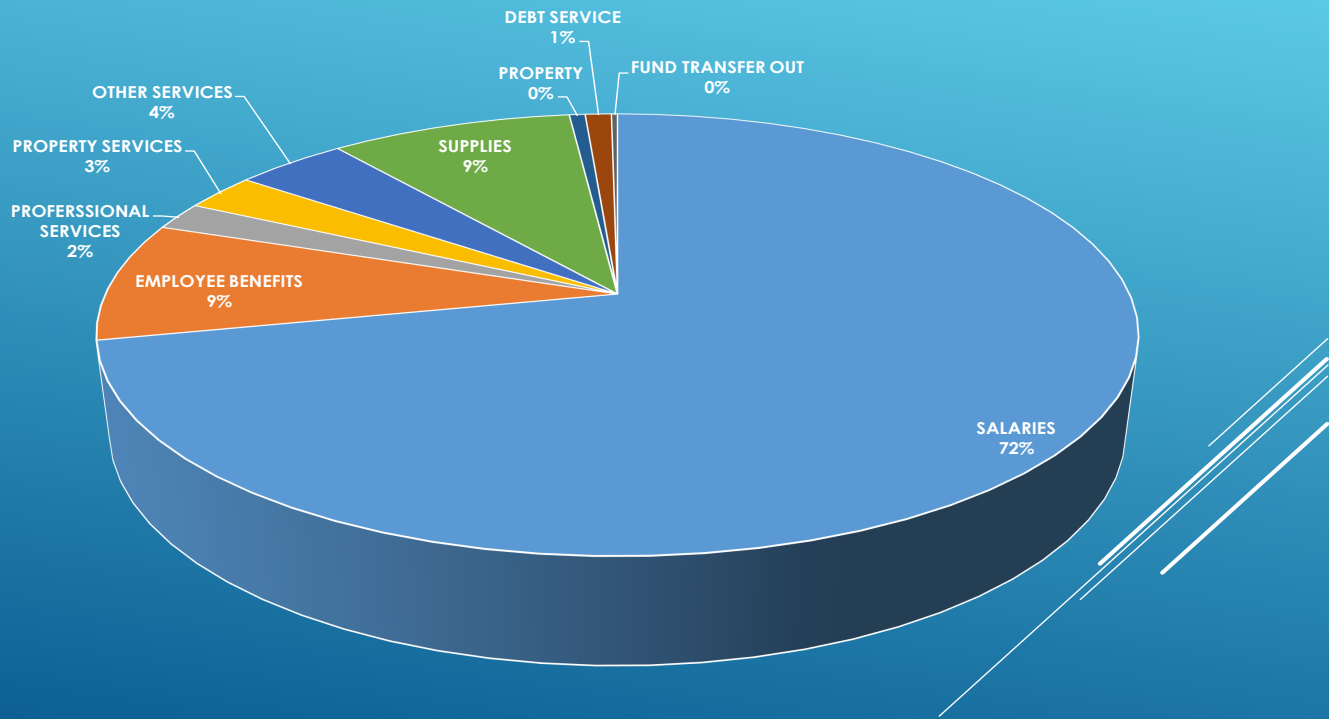


Fiscally Solvent and Efficient

Estimated Revenues for FY 2017

| | |
|------------------------------|---------------|
| BEGINNING BALANCE | 5,800,000.00 |
| REVENUE FROM LOCAL SOURCES | 9,923,055.00 |
| REVENUE FROM STATE SOURCES | 26,444,935.00 |
| REVENUE FROM FEDERAL SOURCES | 350,000.00 |
| OTHER RECEIPTS | 761,900.00 |

Types of things we will spend
General Fund dollars on in 2017



FCS continues to meet our goal of being a Fiscally Solvent and Efficient District. Here are District "Estimated" Revenues and Expenditures for FY 2017. FCS Board has set a goal of 5% contingency annually.



Fiscally Solvent and Efficient

Over the last ten school years, the district has seen a decrease in energy consumption. We used 27 percent less energy in 2014-2015 than we did in 2005-2006.

Even though the district has added square footage since 2005-2006, we have managed to keep the cost at \$.88 per square foot. **The district is saving \$458,000 per year on electricity, for a total of over \$3,200,000 saved so far.**





Did You Know...

Floyd County Schools Continue to Grow/Excel in Academic Competition



Kade Scott ACMS, placed 7th in General Knowledge and 7th in Arts & Humanities in the State! Preston Crace ACMS, Placed 10th in General Knowledge and 8th in Social Studies in the State!

Faith Thornsberry placed 5th in Composition, Dawson Lewis placed 5th in Science and Tate Greene Placed 3rd in Science in Regional Governor's Cup. All Advanced to State in 2016!



ACMS Quick Recall Team Finished Runner Up in the Region and Advanced to State in 2016! Summer Little /1st in Composition.

May Valley are Regional Governor's Champions Overall, FPS and QR in 2016! Osborne Elementary Runners -Up. Alex Begley/Math, Jeffery McKinney/SS, Garret Ousley/Science, Emma Porter/LA, McKinnley Martin Composition and Todd Prater A&H All finished First in the Region!





Did You Know...



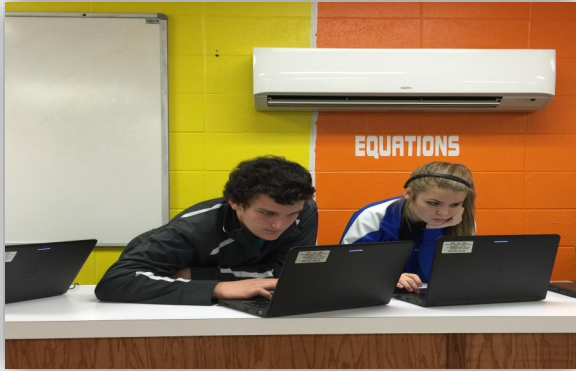
*FCS ranked 145 out of 174 school districts in 2005 and **ranked 15th in 2015!** Over 2000 people celebrated our Designation!!!*



FCS is 1 of only 5 Districts of Distinction in KY and the only one in our region of 19 School Districts!!



Did You Know...



FCS Had 6 Schools of Distinction (Distinguished): ACHS, AES, BLHS, SES Middle, MVES and MES! 12 Distinguished Schools and 5 Proficient Schools!!



Amanda Baker



D'Anna Houston



Renee Gabbard



Kenneth Ramey



Desirae Gasparac

***FCS now has 27 NBCT's
as we added 10 in
2015!***



Kanessa Ritchie



Susan Stephens



Melissa Caudill



Melissa Willis



Stephanie Akers



Did You Know...



Todd Prater, Duff Elementary
State Elementary Scratch Ambassador



Landon Hall and Paul Sparkman
Allen Central Middle
1st in Bench Challenge

11 FC Schools advanced to the State STLP Competition in 2016!!!
AMS, ACHS, ACMS, AES, BLES, BLHS, JMS, MVES, MES, PHS, AES



Ally Stumbo, Gabby Howard, Amelia Wallace
And Madison Thornsberry
Allen Central Middle
Best Showcase Project from Regional Group

Safe School Violations in 2015 were 536 total, down from 1,231 in 2014!





Did You Know...

FCS Helped initiate the Imagination Library in 2015 to promote Literacy for FC KID Birth-Five!!!



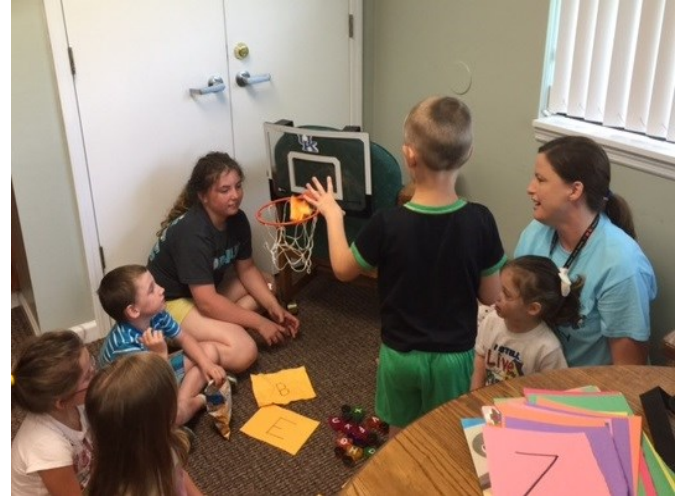
FCS buses continue to travel approximately 6,000 miles per day and 1 million a Year!

*FC Food Service served approximately 905,000 lunches and 815,000 breakfast meals for a total of **1,729,000** in 2016!*





Did You Know...



FCS Started Lunch, Literacy & Learning for Summer 16!



FCS Continues to excel with Regional Science Fair Winners 2016!



Did You Know...



Born Learning Academy continues to be a success in FC. The Academy will be expanded to 3 Sites i17. (MVES, PES & OES)

BLHS Science Olympiad Team won their 5th Regional Title in 16!



Dominique Mims, BLHS State was Runner-Up in Poetry Out Loud Competition!



Did You Know...



Shawn Woods/Aaron Morrison



Mason Swigger/Justin Trout/ Alex Allen

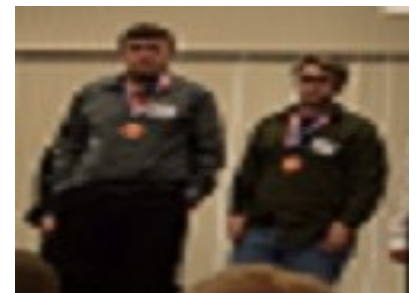


Chad Kendrick/Chris Little



Chad Kendrick/Aaron Hall

FCS ATC Students advanced to state competition in 2016!



Tanner Gibson/Chandler Newsome



PHS Students Blake Ratliff, Jacob Pitts, Jonathan Dotson and Michael Shepherd Won First Congressional App Challenge in 2016!

BLHS Students Austin Yates, Justin Dille, Austin Williams, Alex Parsley, Allen Mitchell, Katie Maynard, Brittany Yates Selected as "BEST IN STATE" Verizon Innovative App Challenge in 2016!





Did You Know...

BLHS won regional competition in Robotics in 2016!



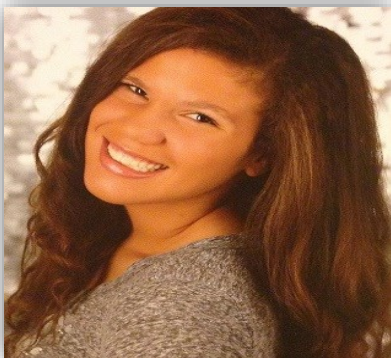
Cameron Dalton Goble: Selected for Governor's School for the Arts in 2016!



Hannah Depoy



Victoria Johnson



Kaylee Williams

***2016 Floyd
County Governor's
Scholars***



Zach Akers



Did You Know...

***Ally Davis and Caleb Gearheart
All State Chorus 2016***



Isabella Jacobs & Ally Davis perform at State Solo Festival: Ally received a Distinguished Rating and Isabella received a Proficient Rating!

Alex Meade is Regional Big Sandy Idol Winner in 2016!



Floyd County Maintenance Staff ensure FC KIDS are in World Class Facilities Daily!





Did You Know...

FCS had another successful year in Sports in 2016!

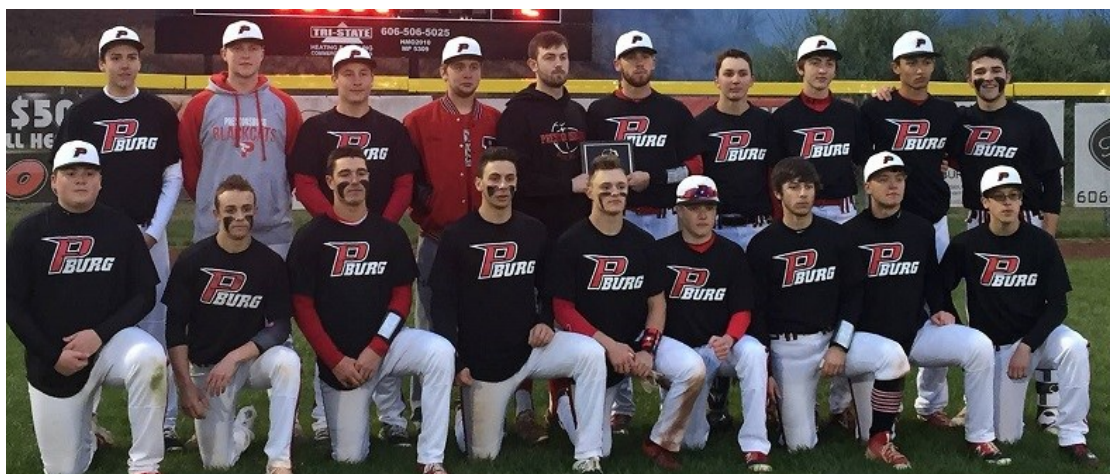


PHS 2015 Regional All A Soccer Champions!

ACHS 2015 All A and 15th Region Volleyball Champions!



***Kelli Thomas SF,
Regional Archery
Champion 2016***



PHS Baseball All A Regional Champions 2016!



NEXT STEPS/District of EXCELLENCE

2016-2017 Growth Strategies

- ◆ ***Full Implementation of PGES to ensure:
Highly effective Teaching/Learning in every class every day;
Highly effective leadership in every building!***
- ◆ ***Emphasis on Development of Leadership Capacity/ Positional and Non-positional/ focus on individual-team growth and induction programs for all new employees***
- ◆ ***Implementation of our Digital Conversion Program: Utilizing Tech to change the way we teach KIDS to ensure they are “Future Ready”/College-Career Ready***
- ◆ ***Focused on specific District Improvement Plan***
- ◆ ***Fully Implement District/School RTI Model***
- ◆ ***Ensuring Every Child Has an Adult Advocate***
- ◆ ***Professional Learning Communities (PLC); As vehicle to build teams and capacity***
- ◆ ***Continuation of building strong curriculum and sharing best practices across the district***
- ◆ ***Assessment for learning; Formative/ Summative***
- ◆ ***Systemic Monitoring Visits with Specific Feedback (*Plan of Excellence)***
- ◆ ***Increase Rigor at ALL LEVELS***
- ◆ ***PETLL Implementation***
- ◆ ***Strong Community/Family Partnerships***

We trust you found our 2016 Annual Review informative. 2016 was truly an exceptional year for Teaching and Learning in FC! This success is a direct result of having an OUTSTANDING BOARD TEAM, 1,000+ Amazing TEAM MEMBERS that are willing to do “Whatever it Takes” for KIDS! 6,000+ of the most talented KIDS on Planet Earth and Parents/Guardians and Community Members who are supportive and willing to be part of the FC family working to create a District of Excellence for KIDS. As we go forward for 2017 we vow as a TEAM to continue to grow collectively while continuing to be “trailblazers” in the Commonwealth of Kentucky to ensure that Floyd County KIDS received a World Class Education!



Thank you for allowing us to serve the KIDS of Floyd County!

**Floyd County Board of
Education**

**Prestonsburg, KY 41653
606.886.2354
www.floyd.kyschools**

