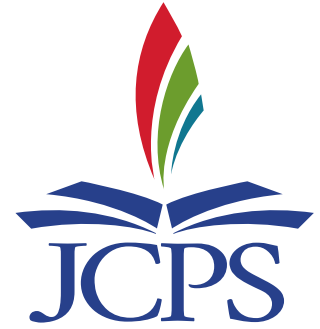


New JCPS Website



Captivating design and state-of-the-art content management system

- Easier to find information
- Meets the needs of parents and students
- A more powerful search feature—Google Search
- Looks and works better on any kind of device
- New calendar compiles all district information in a single location
- Entirely new menu structure
- Each department manages their own content



ABOUT

SCHOOLS

LEARNING

STUDENT SUPPORT

ACTIVITIES

Derby gear features student's design



JCPS launches new website



Click for amazing student art



CALENDAR OF EVENTS

MAR 17 **St. Patrick's Day**
(All day)

MAR 22 **Jefferson County Board of Education Meeting**
7:00 pm to 9:00 pm

MAR 24 **Elementary School Report Card Distribution (3 of 4)**
(All day)

MAR 31 **School Day**
(All day)

REGISTER & APPLY

JCPS CONNECT

READY 4K

JCPS & YOUR MONEY



Art students earn 93 Gold Keys

[Home](#)
[Share](#)

Submitted by thomas.pack@jef... on Thu, 03/03/2016 - 11:12

Gold Keys are presented only to artworks "demonstrating the highest levels of originality, technique, and personal vision," according to the Scholastic Art Awards. JCPS students earned 93 of the 127 Gold Keys presented in Scholastic's Louisville Metro Art Region.

The competition accepted entries from public, private, parochial, and home-schooled students in several Kentucky and Indiana counties. Sponsored by the Alliance for Young Artists & Writers, the awards are the nation's longest-running and largest recognition program for teens involved in the visual arts.

Click any image below to visit a digital gallery with works by the JCPS winners.



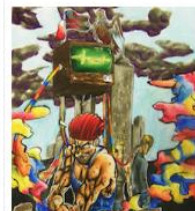
Ceramics & Glass



Design



Digital Art



Easy Navigation



SCHOOL MEALS



PARENT PORTAL



JCPS ONLINE



FOLLOW US

ABOUT

SCHOOLS

LEARNING

STUDENT SUPPORT

ACTIVITIES



Jefferson County Public Schools

3332 Newburg Road
Louisville, KY 40218



Contact Us

Factline

(502) 485-3228

jcps.factline@jefferson.kyschools.us

Technical Problems—IT Service Desk

Weekly maintenance:
Friday between 3 and 6 p.m.

(502) 485-3552

<http://jcps.me/help>

Administration

(502) 485-3011

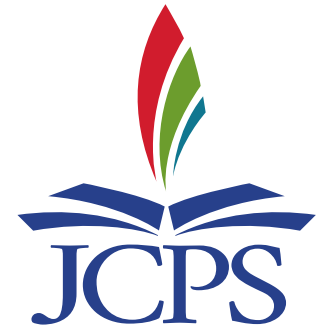
[More Contact Options](#)



See Employment Opportunities
with a Top Education Team >

**JCPS is an Equal Opportunity/Affirmative Action
Employer Offering Equal Educational
Opportunities**

Two Sets of Menus



Main Menu

- About
- Schools
- Learning
- Student Support
- Activities

“Who You Are” Menu

- Parents
- Students
- Adult Students
- Business
- Community Members
- Employees
- Media



ABOUT

SCHOOLS

LEARNING

STUDENT SUPPORT

ACTIVITIES

Parents

Home

Share

All

Special Needs Student

New to JCPS

ESL Student

Gifted & Talented Student

Elementary Student

Middle School Student

High School Student

Preschool Student

Meeting Special Needs

About JCPS

English as a Second Language Services

Gifted & Talented Services

Choosing a School

Applying to Schools

School Finder

School Websites

Health Information

Bus Finder

Getting Ready for Kindergarten

Early Childhood Programs

School Meals

Parent Portal

Parent Teacher Association

Student Transfers

Before- and After-School Childcare

College & Career Readiness

Get Involved

School Profile Pages



Jefferson County Public Schools • Louisville, Kentucky

Select Language



[PARENTS](#) | [STUDENTS](#) | [ADULT STUDENTS](#) | [BUSINESS](#) | [COMMUNITY MEMBERS](#) | [EMPLOYEES](#) | [MEDIA](#)

[ABOUT](#)

[SCHOOLS](#)

[LEARNING](#)

[STUDENT SUPPORT](#)

[ACTIVITIES](#)

Barret Traditional Middle

[Home](#) / [Schools](#)

Share

SCHOOLS

[How to Apply](#)

[Inclement Weather](#)

[JCPS eSchool](#)

[School Choices](#)

[School Finder](#)

[School Profile Pages](#)

[School Performance Data](#)

[School Safety](#)

[Transportation Services](#)



A Tradition of Excellence

Address: 2561 Grinstead Drive, Louisville, KY 40206

[Map & Directions](#)

School Website:

<http://schools.jefferson.kyschools.us/Schools/Middle/Barret/index.html>

SUMMARY

Level: Middle

Attendance Area:

[Traditional Middle School](#)

[Boundary Map.pdf](#)

SCHOOL LEADERSHIP

Assistant Superintendent:

[Joseph Leffert](#)

Board Member: [David Jones Jr.](#)

Principal: [Thomas C. Wortham](#)

IMPORTANT LINKS

- [School Report Card](#)
- [School Plan](#)
- [Student Promotion/Progression](#)
- [Code of Conduct](#)
- [SBDM Minutes](#)

[Overview](#)

[Programs](#)

[School Data](#)

[Get Involved](#)

- Offers traditional education

[ABOUT](#)[SCHOOLS](#)[LEARNING](#)[STUDENT SUPPORT](#)[ACTIVITIES](#)

Leadership & Organization

[Home](#) / [About](#)[Share](#)

ABOUT

[Accountability](#)[Community Schools](#)[Doing Business With JCPS](#)[History of JCPS](#)[Leadership & Organization](#)[Board of Education](#)[Superintendent](#)[Assistant
Superintendents](#)[Principal List](#)[School-Based Decision
Making](#)[Organizational Structure](#)[Newsroom](#)[Office of the Ombudsman](#)[Policies](#)[Vision, Mission, Values, &
Focus Areas](#)[Volunteer & Donate](#)

JCPS is organized into divisions and departments that promote collaboration and sharpen the district's focus on the common goal of providing meaningful education so all students will become college- and career-ready.

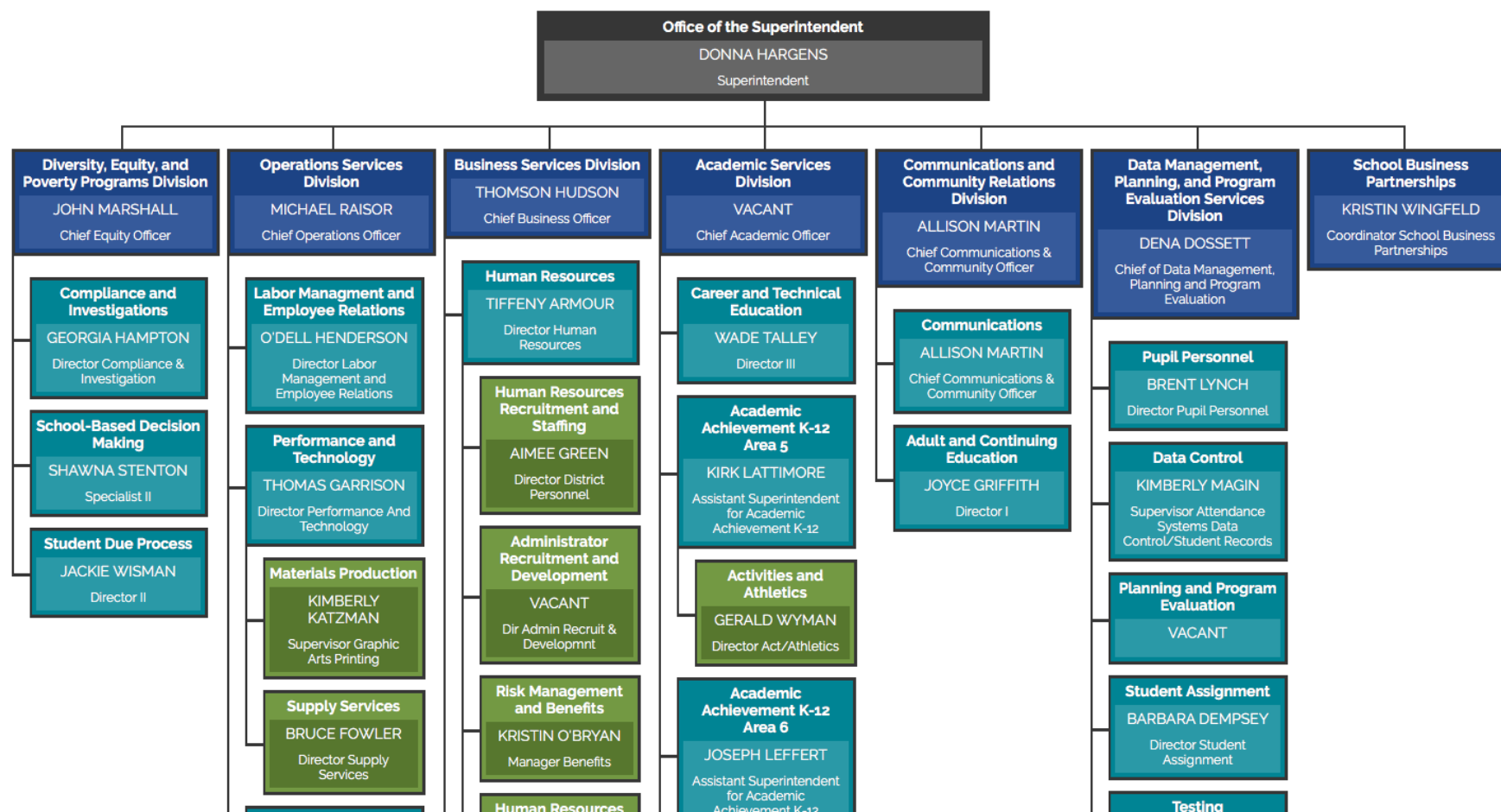
[Board of Education](#)[Superintendent](#)[Assistant Superintendents](#)[Principal List](#)[School-Based Decision Making](#)[Organizational Structure](#)

[ABOUT](#)[SCHOOLS](#)[LEARNING](#)[STUDENT SUPPORT](#)[ACTIVITIES](#)

Organizational Structure

[Home](#) / [About](#) / [Leadership & Organization](#)

Share



Existing tools have a new look.



Jefferson County Public Schools • Louisville, Kentucky

Select Language



PARENTS | STUDENTS | ADULT STUDENTS | BUSINESS | COMMUNITY MEMBERS | EMPLOYEES | MEDIA

ABOUT SCHOOLS LEARNING STUDENT SUPPORT ACTIVITIES

Share

Bus Finder

Home

Enter your address below to search for your bus stop choices.

STREET ADDRESS

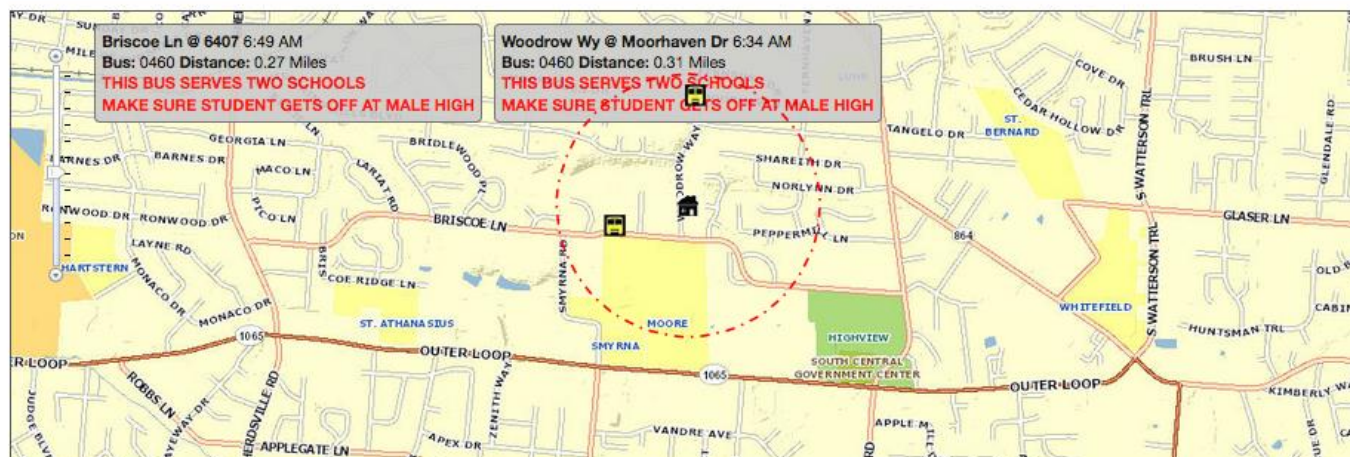
7201 Woodrow Way

SCHOOL

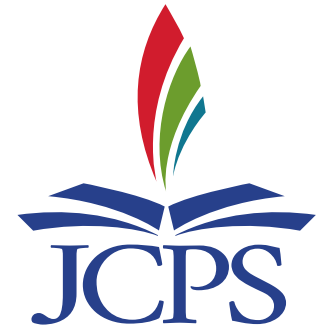
Louisville Male High Schoo

Search

Your Bus Stop Choices



Powerful Tools for Books



JCPS Policy Manual



Home

Share

BOOK SEARCH

SEARCH THIS BOOK

Search

BOOKS

- 01 - Powers and Duties of the Board
- 02 - Administration
- 03 - Personnel
- 04 - Fiscal Management

Board Policy Manual



Responsive, for Mobile Devices



ABOUT SCHOOLS LEARNING STUDENT SUPPORT ACTIVITIES

Superintendent

Home / About / Leadership & Organization

ABOUT

Accountability

Community Schools

Doing Business With JCPS

History of JCPS

Leadership & Organization

- Board of Education
- Superintendent
 - About the Superintendent
 - Golden Oar Award
 - Reports & Publications
 - Superintendent in Action
 - Superintendent's Student Advisory Council
- Assistant Superintendents
- Principal List
- School-Based Decision Making
- Organizational Structure

Newsroom

Office of the Ombudsman

Policies

Vision, Mission, Values, & Focus Areas

Volunteer & Donate



A Message From Superintendent Donna Hargens

Welcome to Jefferson County Public Schools. I hope you will explore our website to learn more about our district, including our goals and achievements. This site is designed to be a resource not just for JCPS employees but for the entire community as we raise the bar and provide the instruction and the support every student needs for academic success.

On our [For Parents](#) page, you'll find links to bus schedules, lunch menus, health requirements, enrollment/application procedures, and other resources that help parents stay fully engaged throughout their child's education. You may also want to [visit the webpages of individual schools](#).

The [Student Support](#) page offers many resources that will help students be successful in the classroom. The page also provides information on sports, clubs, and other school activities.

Jefferson County is a community that passionately cares about education. Working together, we can ensure all students are able to grow academically in a learning environment that ultimately prepares them to

Tweets by @JCPSSuper

Dr. Donna Hargens @JCPSSuper
Thanks, Grandd Science! And a big thanks to all parents, spouses, and supporters of those working hard in schools.
[twitter.com/lanefdattilo/...](#)

Dr. Donna Hargens @JCPSSuper
Congrats to this fine @ShawneeAcademy senior, Tayquan—headed to an exciting future. AWARD: [goo.gl/XNTEV](#)



Dr. Donna Hargens @JCPSSuper
[Embed](#) [View on Twitter](#)

Share

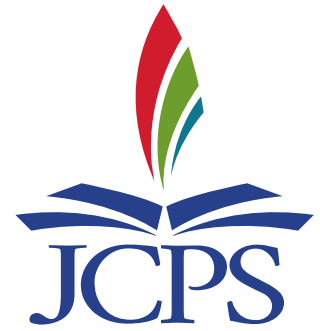


A Message From Superintendent Donna Hargens

Welcome to Jefferson County Public Schools. I hope you will explore our website to learn more about our district, including our goals and achievements. This site is designed to be a resource not just for JCPS employees but for the entire community as we raise the bar and provide the instruction and the support every student needs for academic success.

On our [For Parents](#) page, you'll find links to bus schedules, lunch menus, health requirements, enrollment/application procedures, and other resources that help parents stay fully engaged throughout their child's education. You may also want to [visit the webpages of individual schools](#).

The new JCPS website—a powerful communications tool.



Meeting the information needs of parents and students

- Learn about school choices
- Research individual schools
- Understand the process of registering and applying to JCPS
- Monitor students' class enrollments and assignments
- Find detailed bus information
- Learn about programs
- Pay for school meals
- Get student support
- Learn about upcoming events