

The Journey...

Donna M. Hargens, Ed.D.
Superintendent
January 11, 2016

Overall Summary: Reading & Math

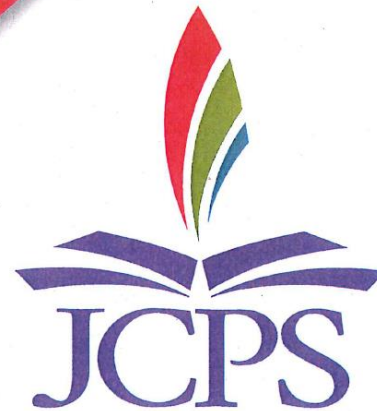
Groups	2012 to 2015	2014 to 2015
All Students	5.7	-.2
Non-Gap	7.3	.4
Gap	6.2	0
African-American	4.8	-.5
Exceptional Child Education (ECE)	3.2	-.6
Free/Reduced lunch	6.2	.1
Hispanic	5.4	.7
Limited English Proficient (LEP)	3.1	-2.3

Increased	Gain of 1% or more
Stable	0 - < 1% gain or loss
Decreased	Loss of 1% or more

JEFFERSON COUNTY PUBLIC SCHOOLS

VISION 2020

EXCELLENCE
With EQUITY

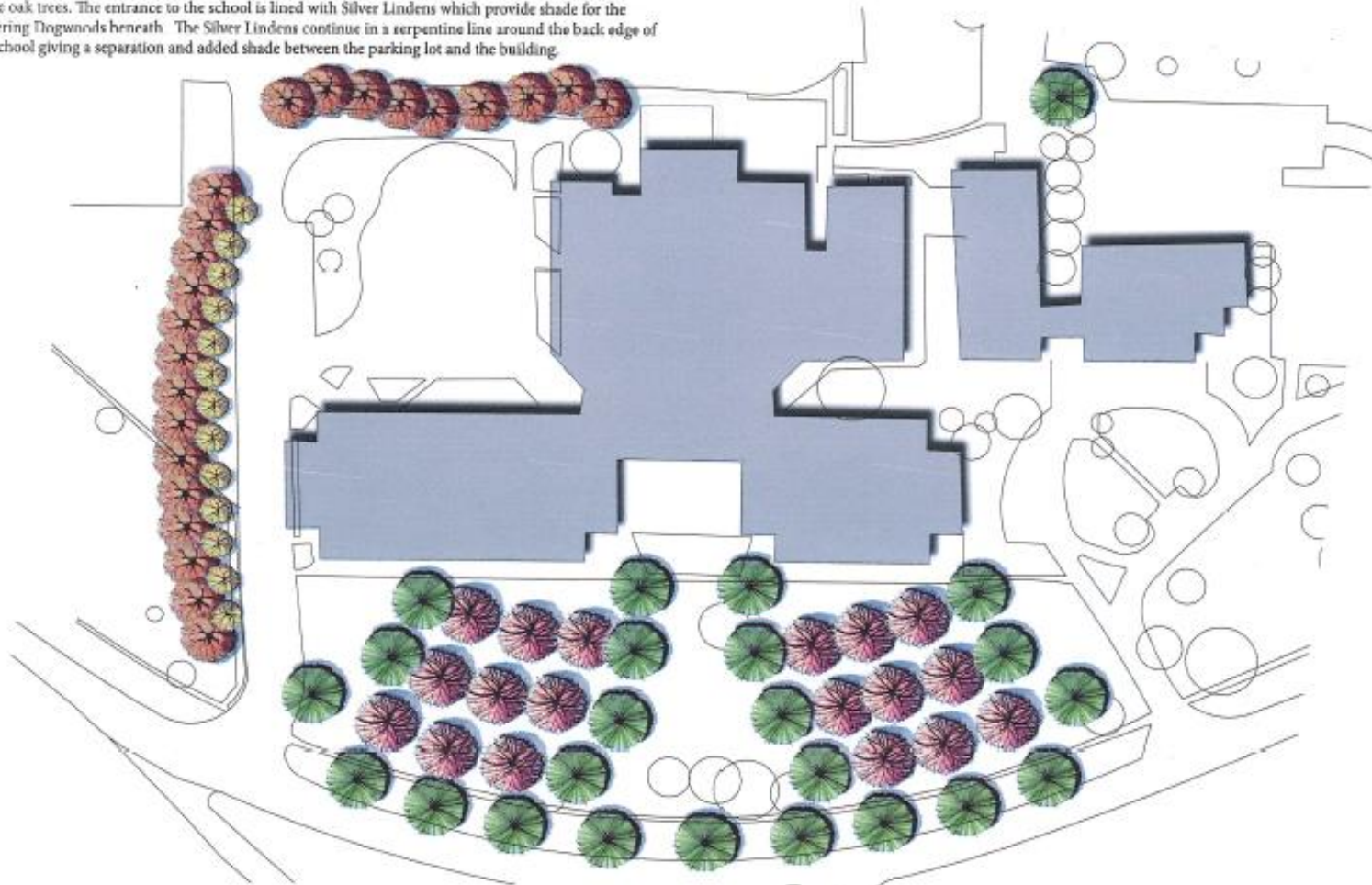


Learning, Growth, and Development
Increasing Capacity and Improving Culture
Improving Infrastructure and Integrating Systems



DESCRIPTION:

Doss High School is located at 7601 Saint Andrews Road in Louisville, Kentucky. It is set back from the road and has a sidewalk that runs parallel to St. Andrews Road. This plan places a row of Scarlet Oaks along the sidewalk in the front of the school to give shade to the users of the walkway. Scarlet Oaks are also placed in a radial pattern in front of the school creating a visual sense that the building is closer to the road. Drawing from the inspiration of the grid, Japanese Zelkovas are placed just inside the perimeter of the oak trees. The entrance to the school is lined with Silver Lindens which provide shade for the flowering Dogwoods beneath. The Silver Lindens continue in a serpentine line around the back edge of the school giving a separation and added shade between the parking lot and the building.



LA Design With Plants
Fall 2015
Dr. Christopher Sass

Doss High School Tree Master Plan

William Hodges
Michelle Hume-koch

The John F. Kennedy Montessori Elementary School

is located just to the East of I-264 (Shawnee Expy) just North of Algonquin Pkwy. The surrounding neighborhoods have been renovated and now has a much safer and inviting feeling. The elementary school is also located just South of a railroad that currently is transporting hazardous material, which is a huge safety concern and visually unpleasant. So for our design we wanted to try and screen the railroad from the school as well as try to muffle some of the noise from I-264. One of the most important features of this design is the viewing angles, the trees are designed to allow someone to walk right outside the door to the recess area and see all of the major play areas. Such as: the open field, the playground, learning gardens, gazebo, and down the two starting points of the walking path. This design also helps create different atmospheres/zones with plenty of shade depending on where you are located on the site. We used half native trees and half non-native but really wanted to give a good variety of trees so that the students are able to use them to help learn more about nature and all the different types of trees.

