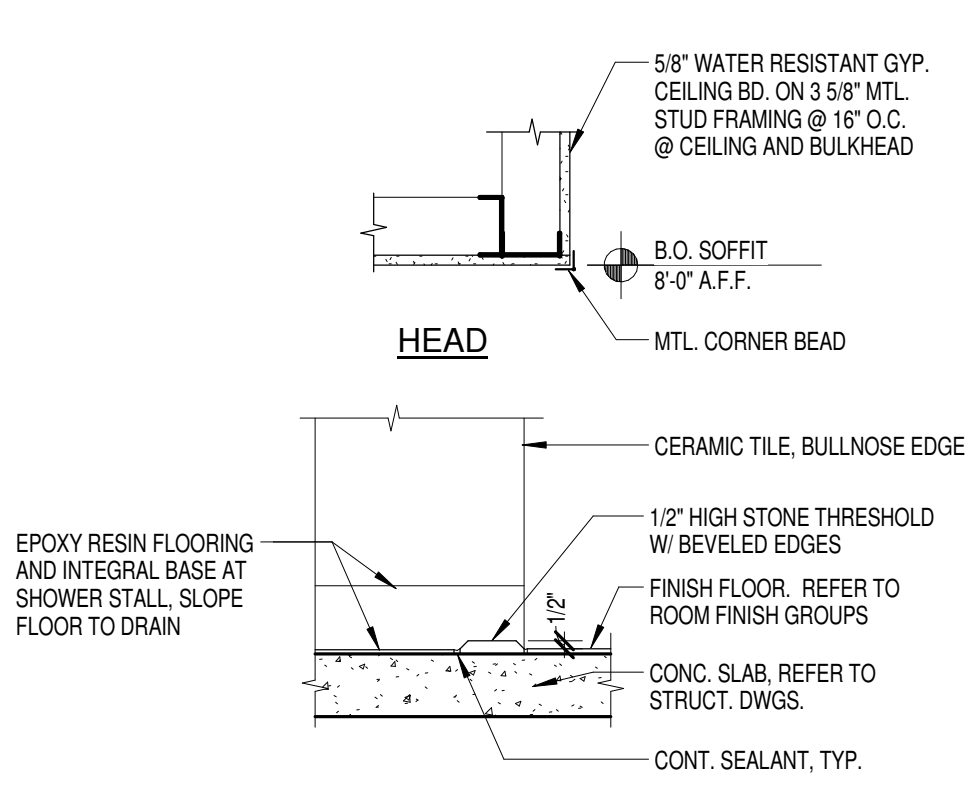
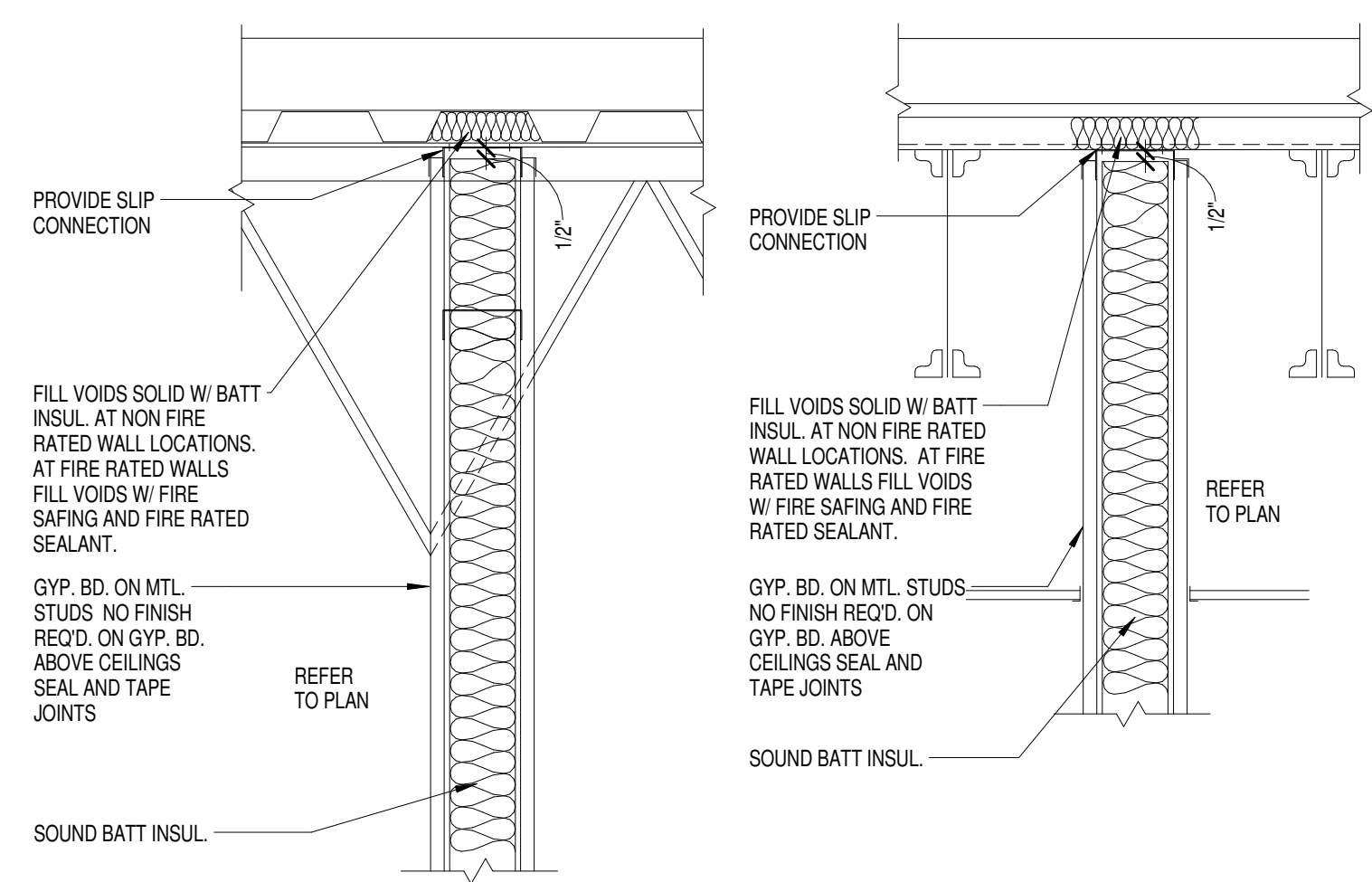


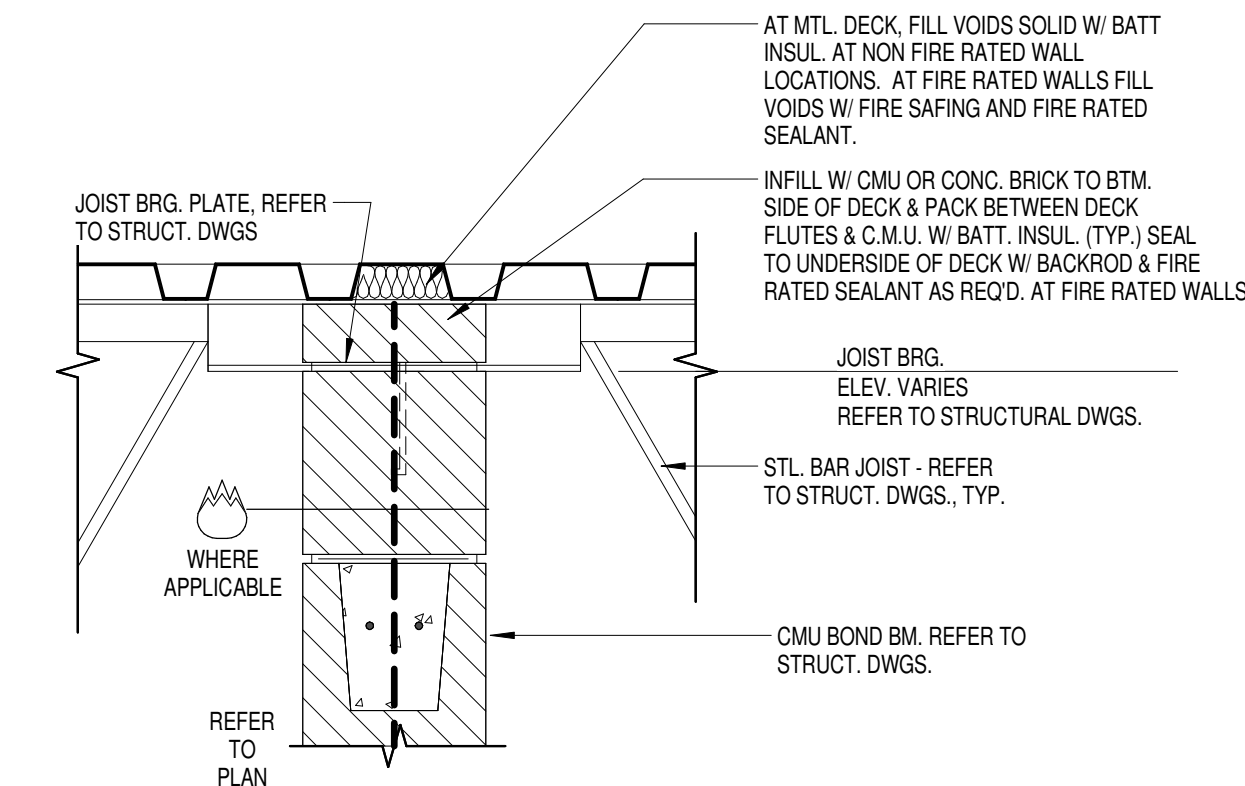
15 PROJECTION SCREEN DETAIL
1 1/2" = 1'-0"



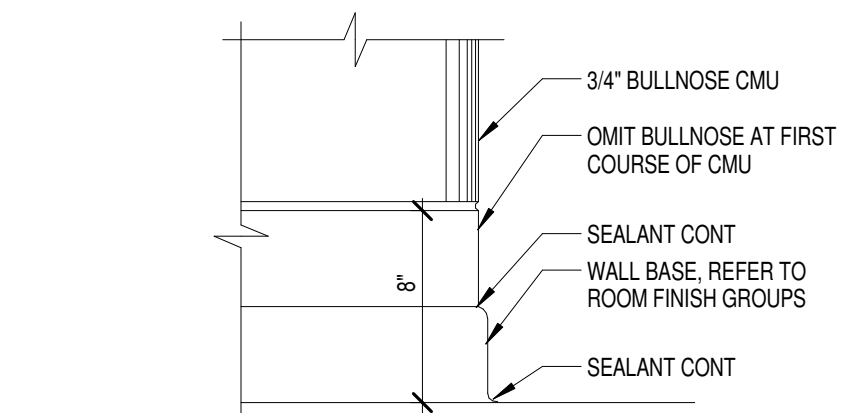
10 SHOWER SILL/SOFFIT DETAIL
1" = 1'-0"



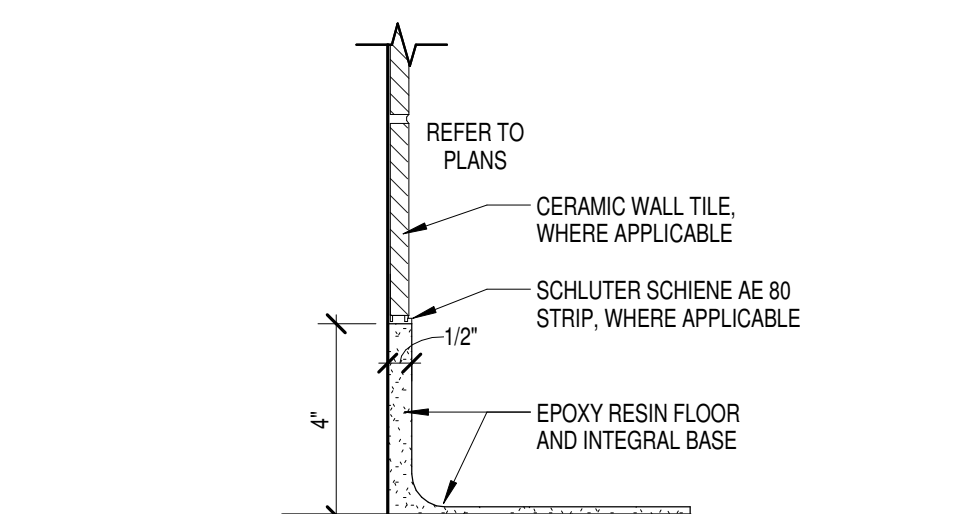
6 TYP. NON-LOAD BEARING MTL. STUD/ GYP. BD. PARTITION
1 1/2" = 1'-0"



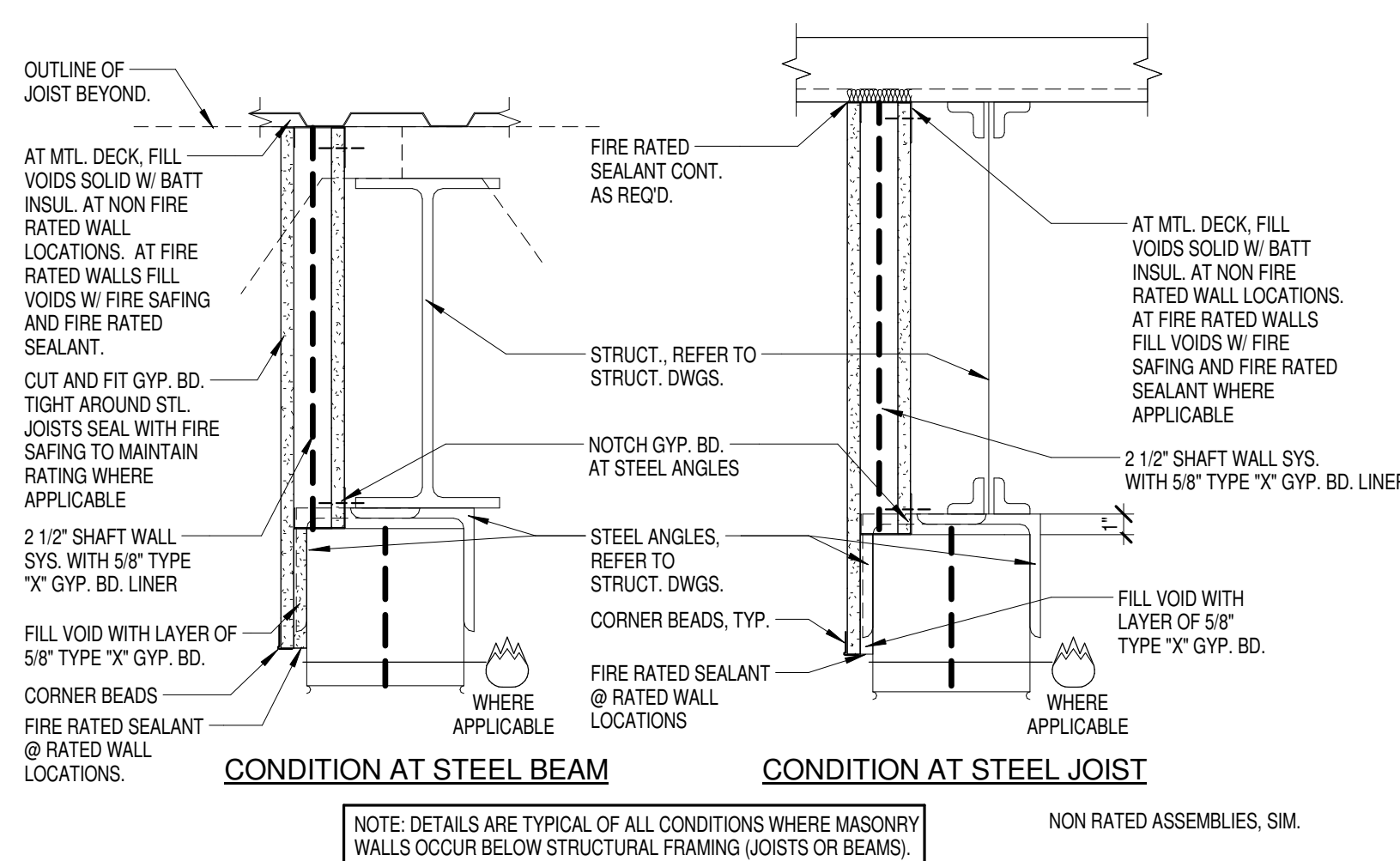
1 TYP. LOAD BEARING CMU PARTITIONS
1 1/2" = 1'-0"



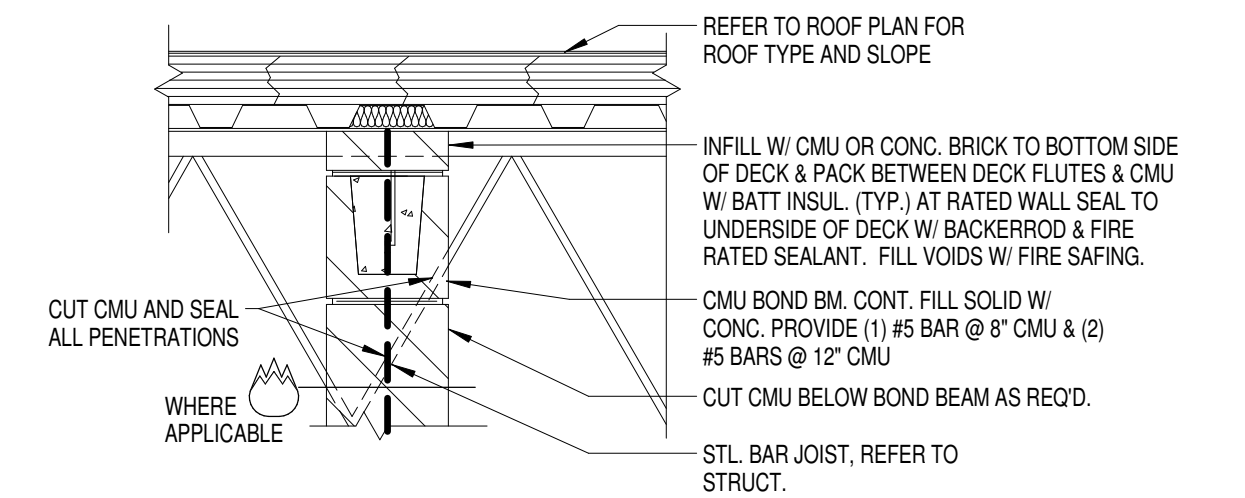
16 TYPICAL CMU BASE DETAIL
1 1/2" = 1'-0"



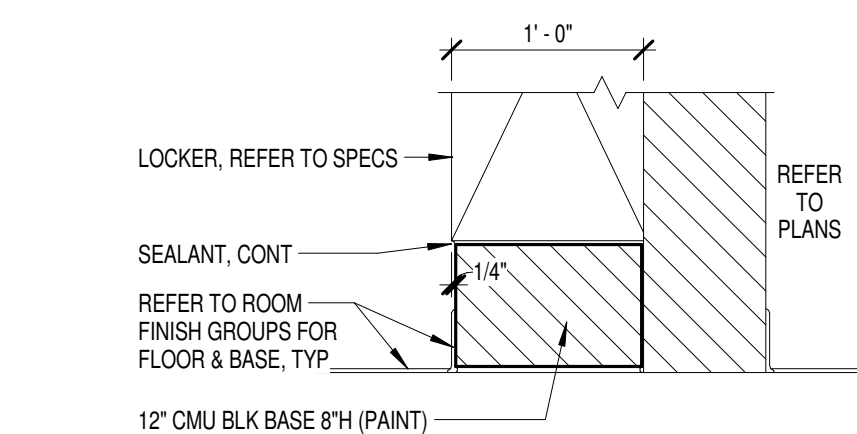
11 TYPICAL RESIN BASE DETAIL
3" = 1'-0"



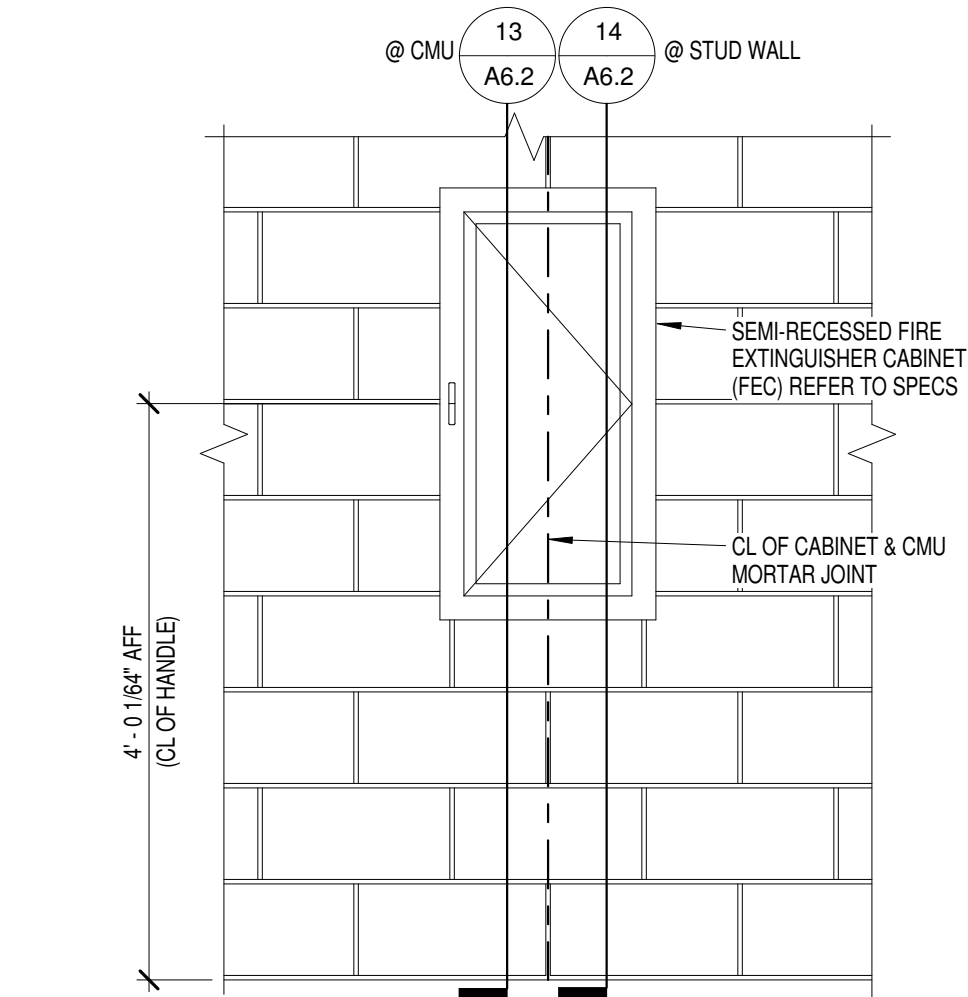
7 TYP. WALL AND FRAMING DETAIL @ RATED ASSEMBLIES
1 1/2" = 1'-0"



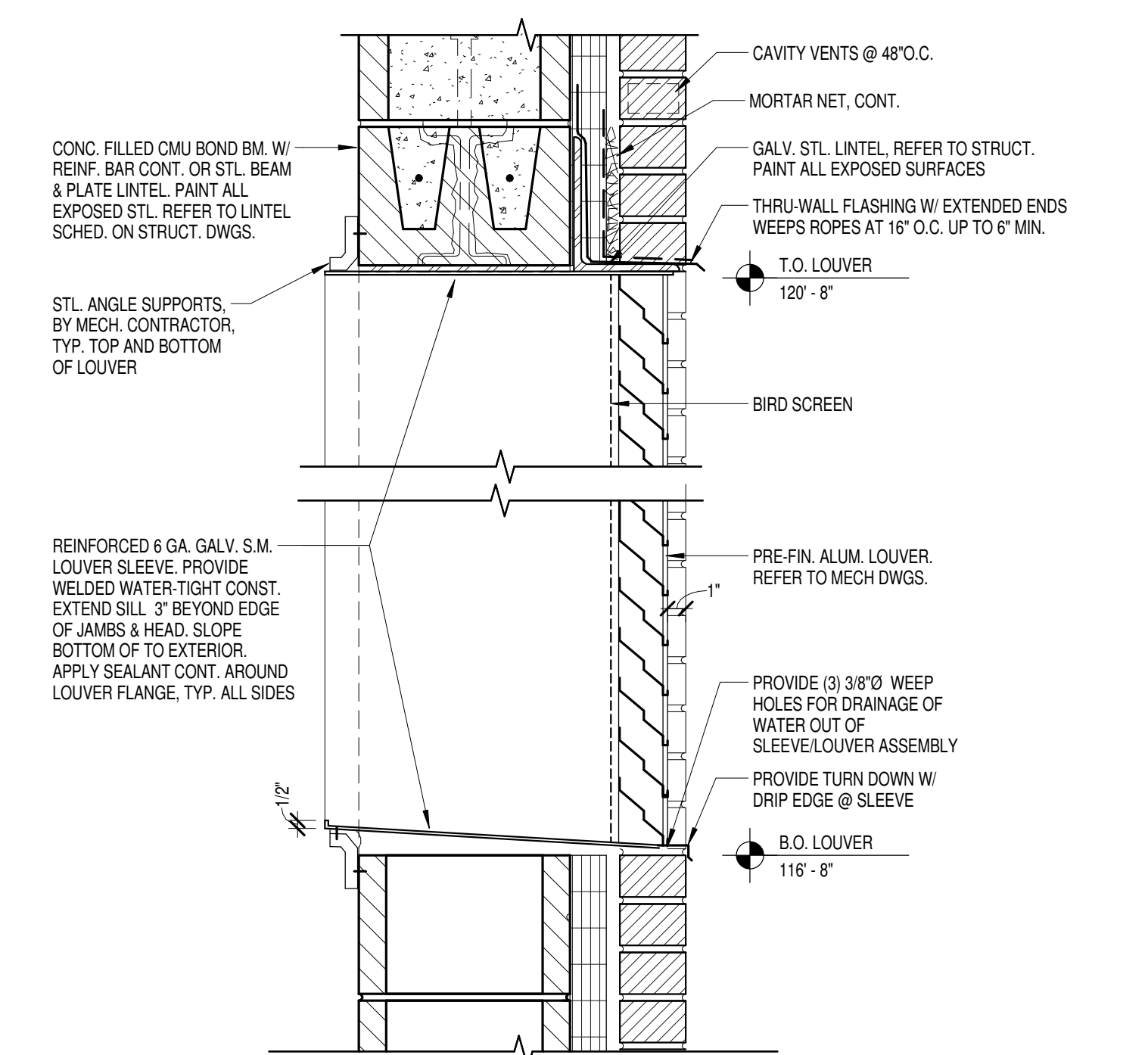
2 TYP. NON-LOAD BEARING CMU PARTITIONS
1" = 1'-0"



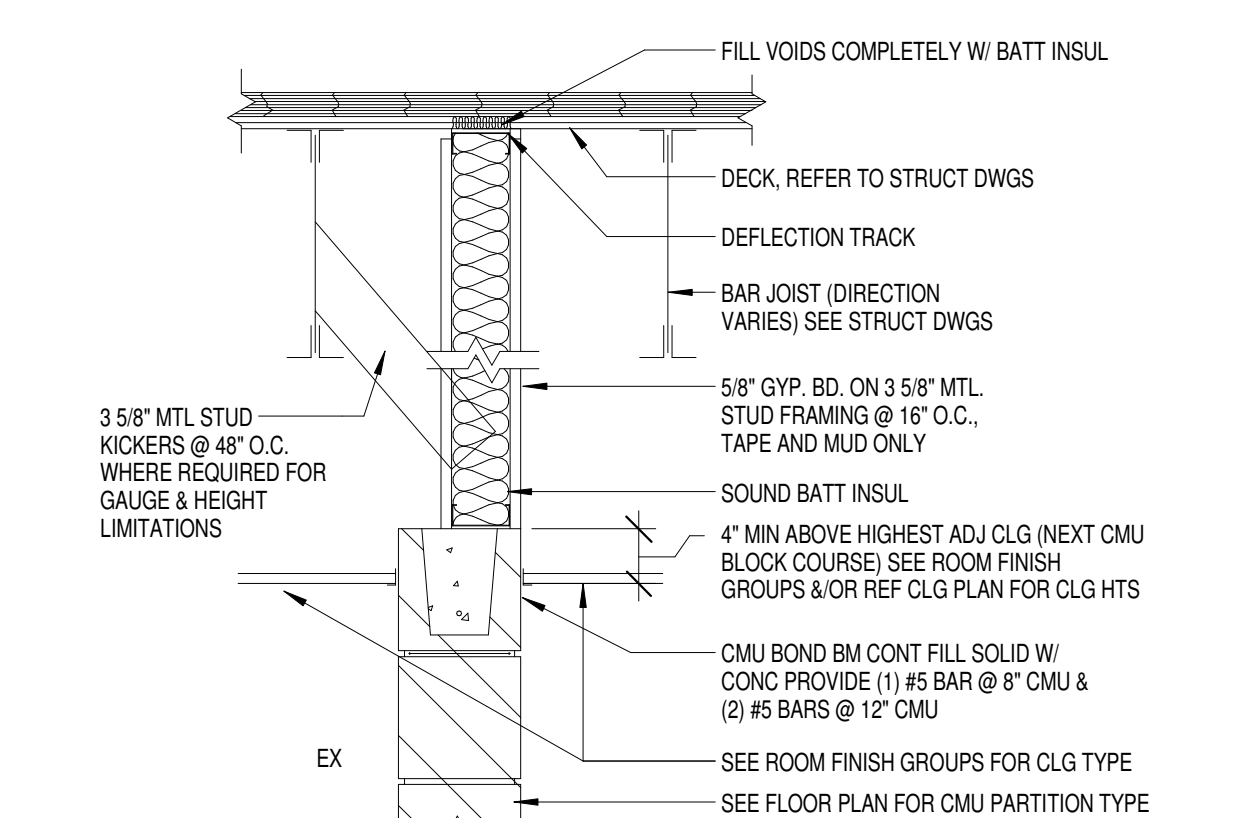
17 LOCKER BASE DETAIL
1" = 1'-0"



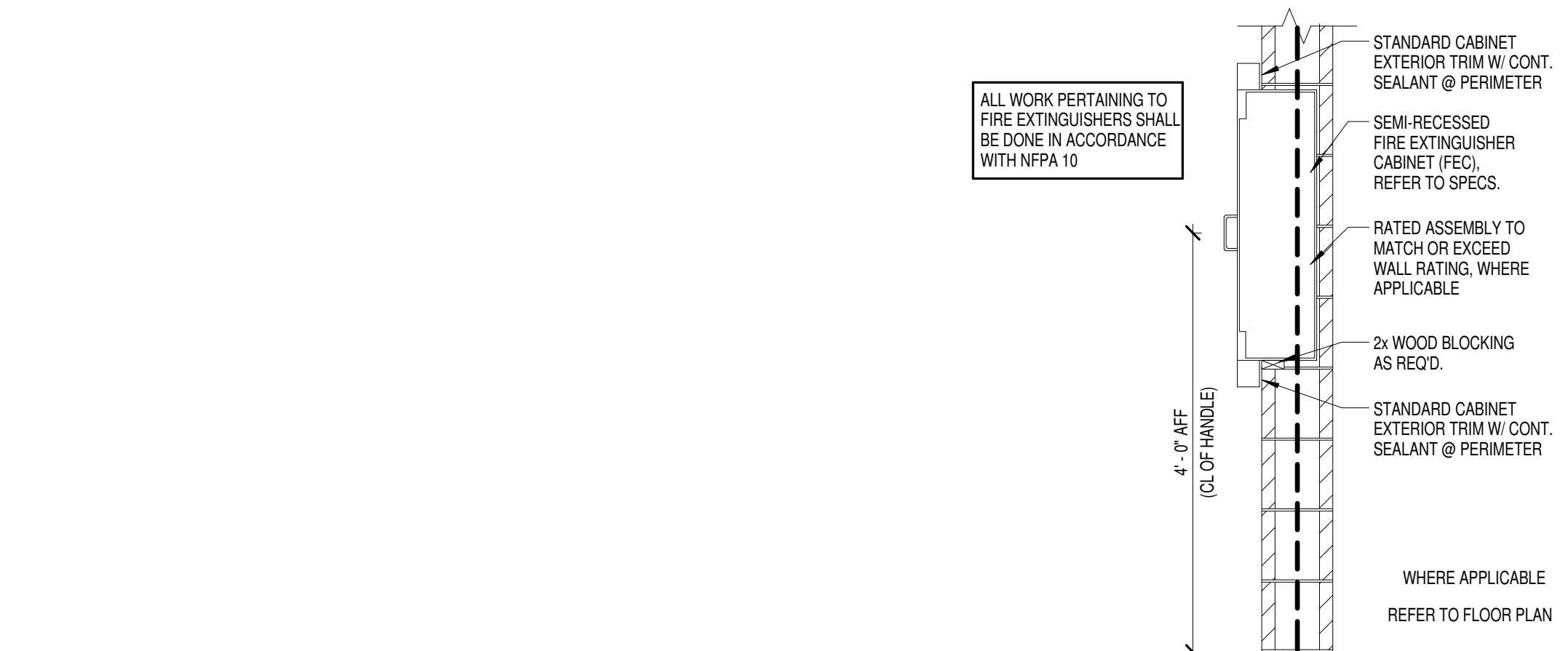
12 FEC ELEVATION
3/4" = 1'-0"



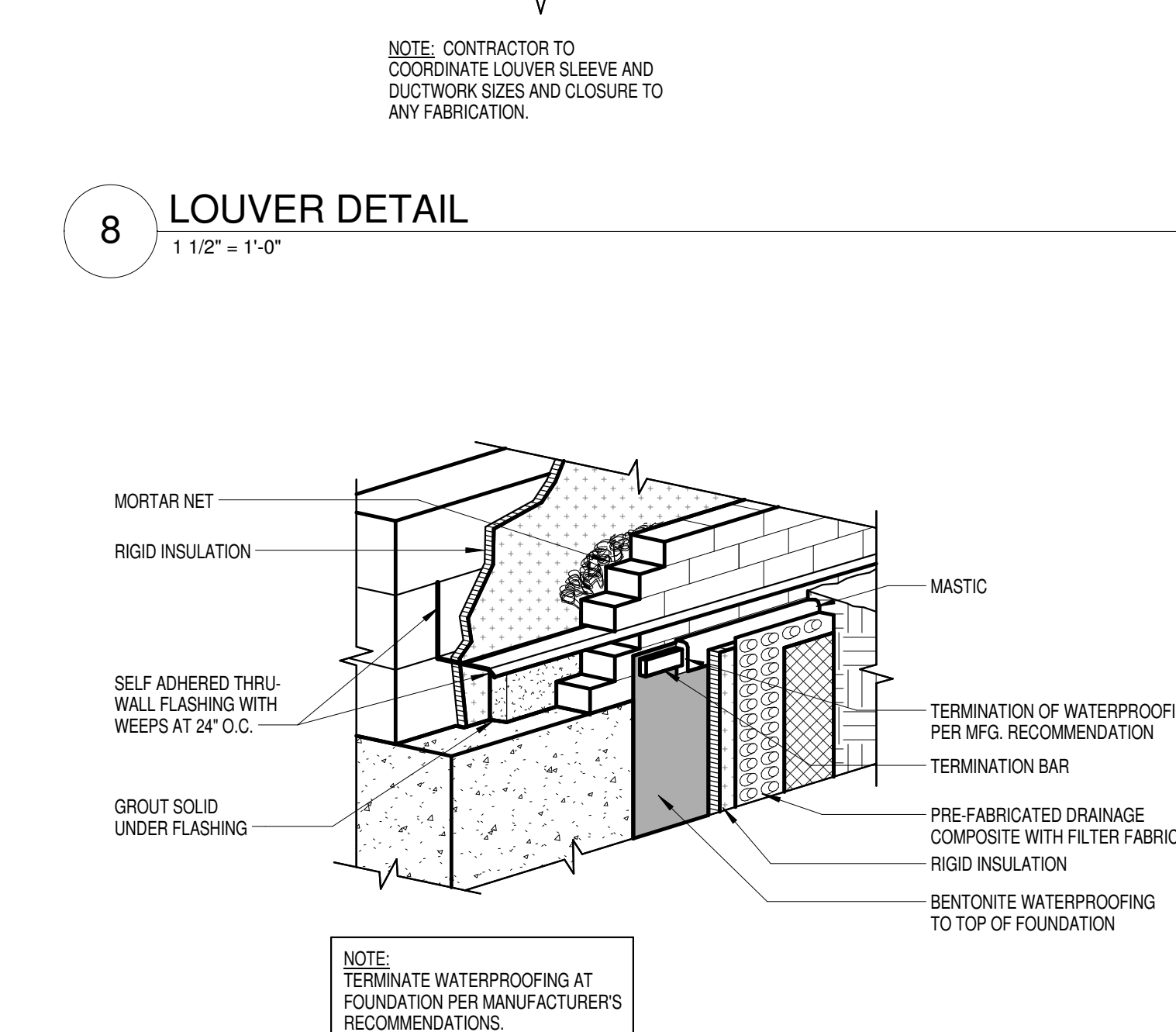
8 LOUVER DETAIL
1 1/2" = 1'-0"



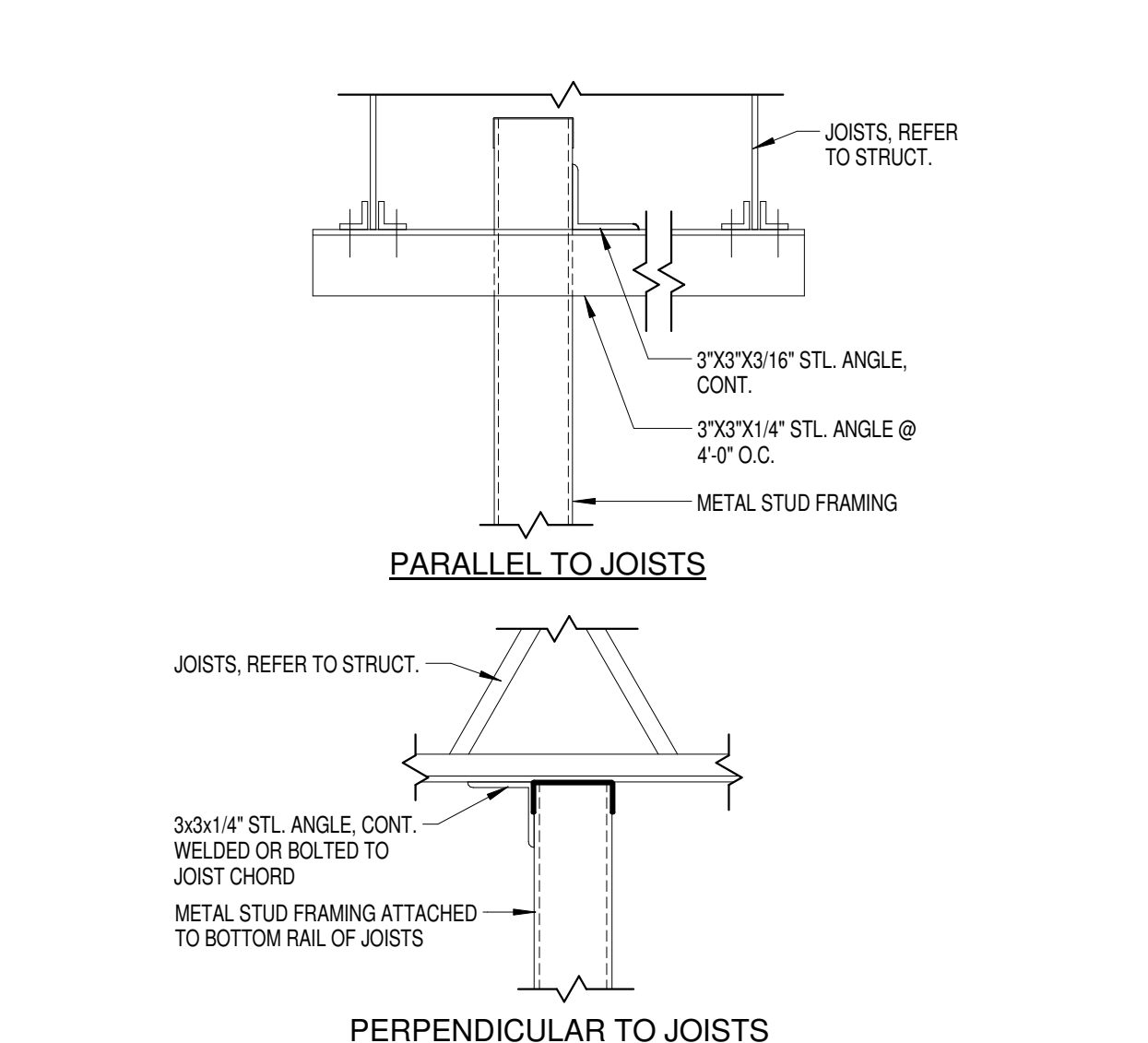
4 TYPICAL SOFFIT SUPPORT
1 1/2" = 1'-0"



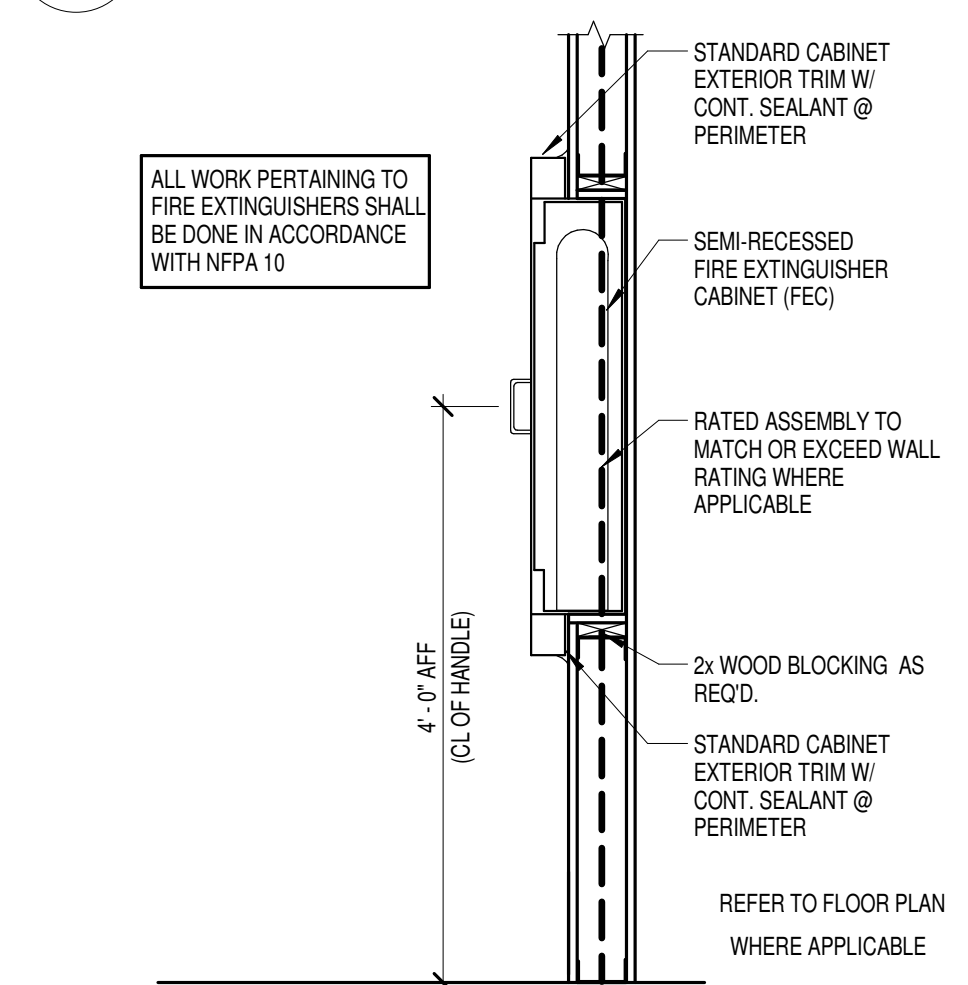
13 FEC SECTION AT CMU
3/4" = 1'-0"



9 DETAIL
1 1/2" = 1'-0"



5 TYPICAL FLASHING DETAIL
1 1/2" = 1'-0"



14 FEC SECTION AT STUD WALL
3/4" = 1'-0"

JOB NO.	1429
DATE	DEC 2, 2014
DRAWN	ALC, ASC
CHECKED	GWJ, BKL

COPYRIGHT © 2015
SHERMAN CARTER BARNHART
ARCHITECTS, PLLC

REVISIONS

No.	Description	Date

SHEET