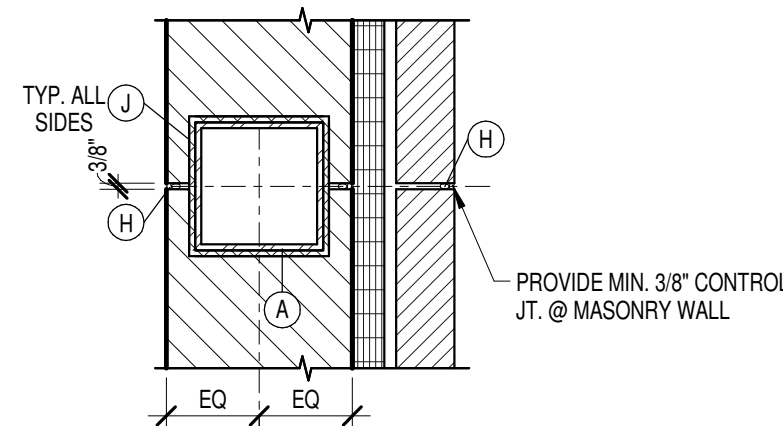
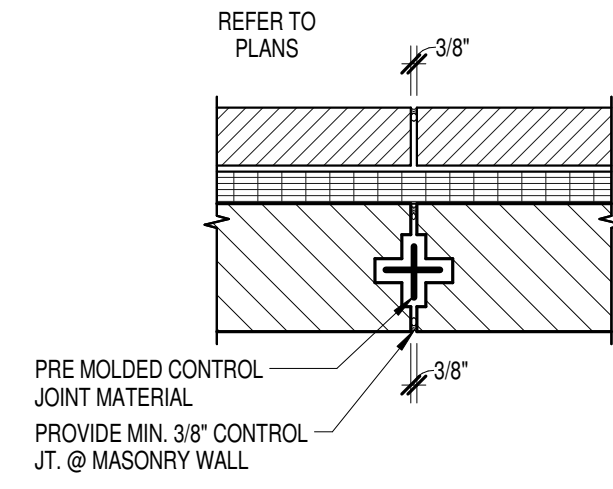


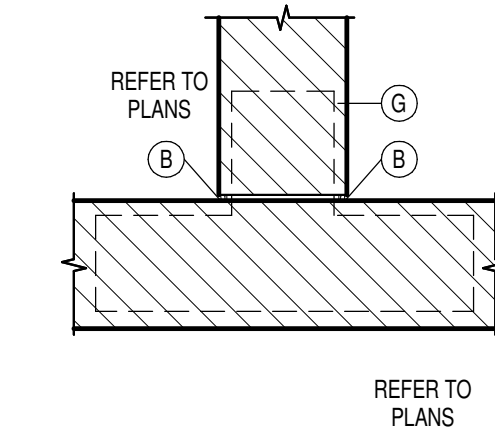
12
1" = 1'-0"



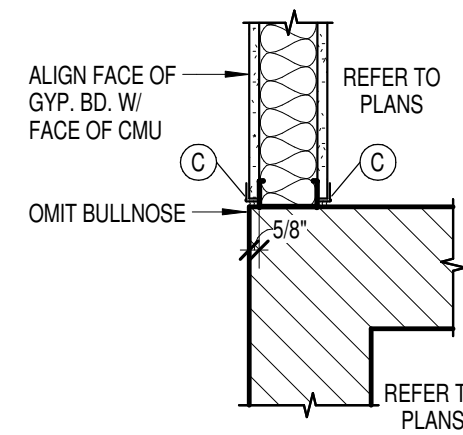
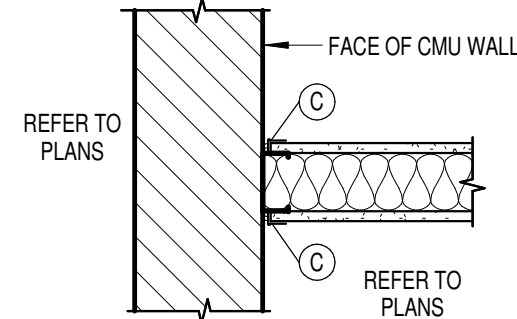
14
1" = 1'-0"



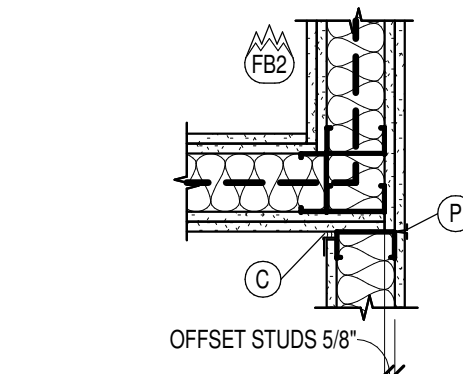
6
1" = 1'-0"



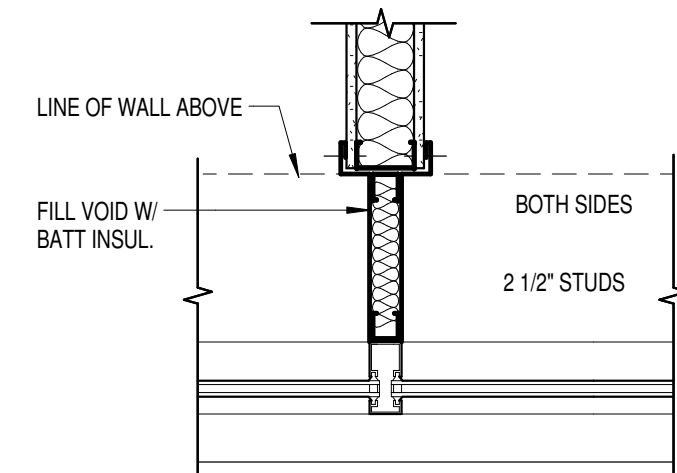
7
1" = 1'-0"



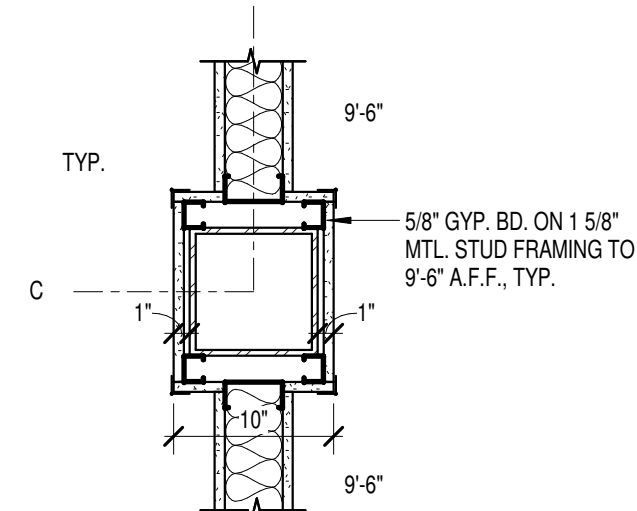
8
1" = 1'-0"



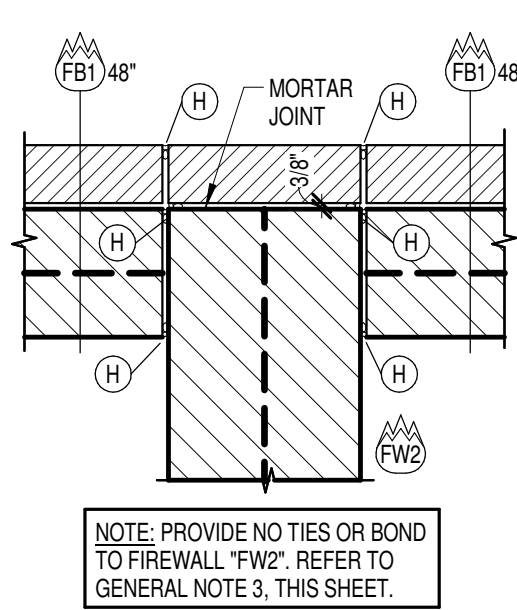
9
1" = 1'-0"



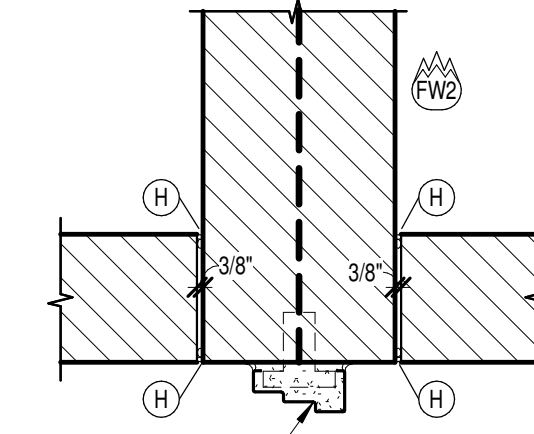
10
1" = 1'-0"



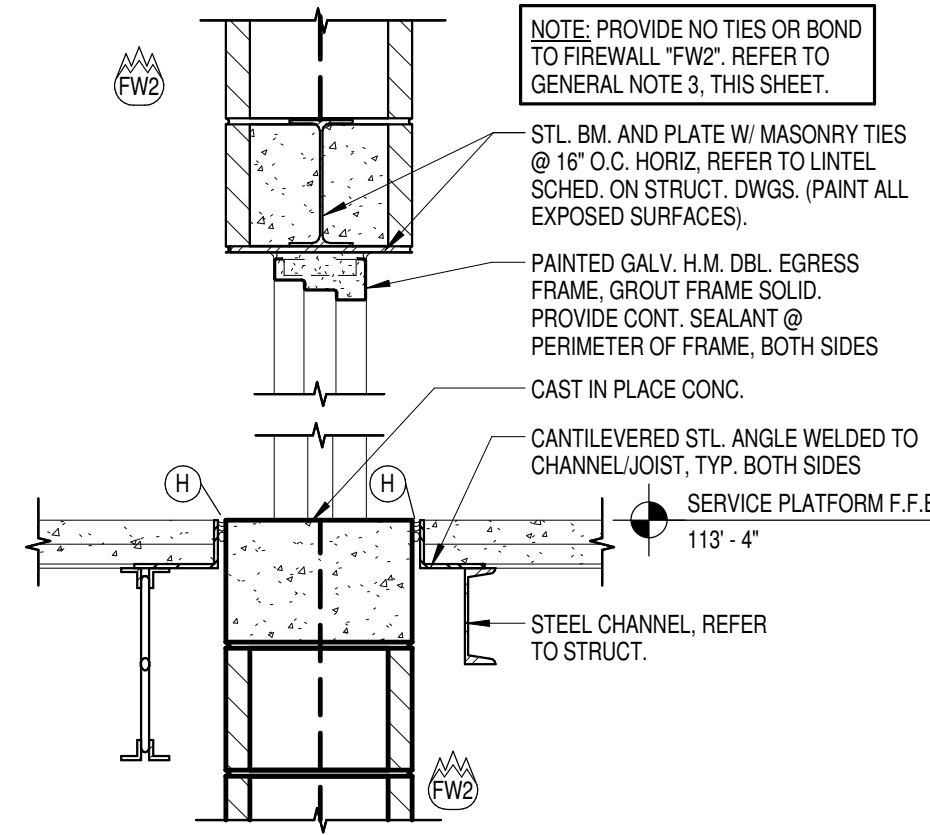
11
1" = 1'-0"



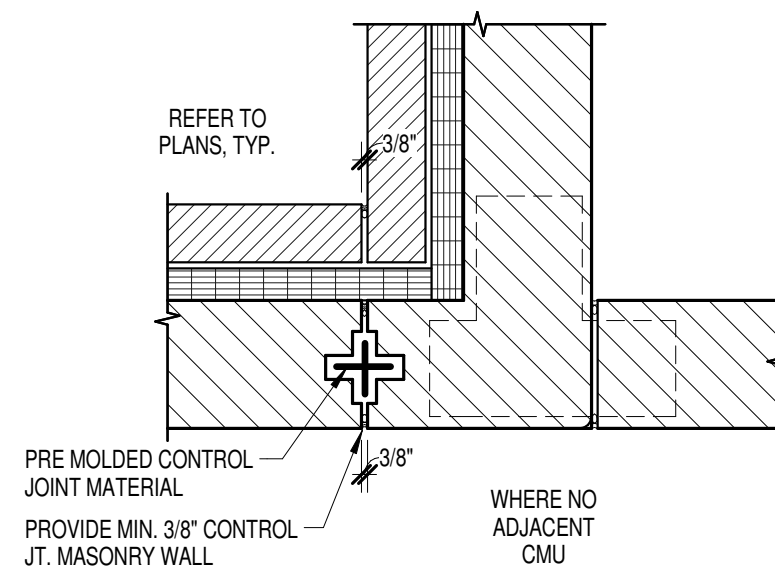
1
1" = 1'-0"



2
1" = 1'-0"



3
1" = 1'-0"



GENERAL COLUMN & WALL DETAIL NOTES

- SEE STRUCTURAL AND ARCHITECTURAL FLOOR PLANS FOR COL. LINES AND DIMENSIONS NOT SPECIFICALLY REFERENCED ON THESE DETAILS.
- FIRE RATED SEALANT IS REQUIRED AT ALL JOINTS IN RATED WALLS.
- DO NOT ANCHOR OR ATTACH ADJACENT MASONRY OR STEEL TO FIREWALL "FW2". DO NOT GROUT ADJACENT CMU TO FIREWALL. PROVIDE FOAM ROD AND SEALANT.
- SAWCUT ALL MASONRY AT STRUCTURAL STEEL AS REQUIRED TO MAINTAIN A3/8" CLEARANCE BETWEEN MASONRY AND STEEL.

COLUMN AND WALL KEYNOTES

- A. STEEL COLUMN. SHOP PRIME ALL COLUMNS. SHOP PRIME AND PAINT IF NOT CONCEALED BY COLUMN COVERS OR OTHER WALL MATERIALS.
- B. RAKE JOINT. MIN. 1/2". PROVIDE SEALANT CONT. FULL HEIGHT.
- C. L-BEAD AND SEALANT CONT. FULL HEIGHT.
- D. CORNER BEAD.
- E. BULLNOSE CMU CORNER.
- F. GALV. HARDWARE SCREEN TIES @ 16" O.C. VERTICAL.
- G. PROVIDE GALV. LADDER TYPE HORIZ. PRE-FORMED "T" OR CORNER REINF. @ 16" O.C. VERTICAL.
- H. BACKER ROD AND SEALANT, CONT. FULL HEIGHT.
- J. MAINTAIN 3/8" MIN. CLEARANCE BETWEEN COL. AND CMU. PROVIDE COMPRESSIBLE FILLER BOND BREAK AT VOID.
- K. GALV. MTL. COLUMN TO MASONRY WALL TIES @ EVERY OTHER VERTICAL BLOCK COURSE.
- L. FILL COL. FULL HEIGHT W/ CLOSED CELL FOAM INSULATION.
- M. 2x WD. P.T. WOOD BLOCKING AS REQUIRED.
- N. LIGHT GAUGE FRAMING. STUD SIZE INDICATED ON DETAIL.
- P. GYP. BD. CONTROL JOINT.
- Q. PRE-FIN. ALUM. STOREFRONT SYSTEM. REFER TO PLANS, DOOR SCHEDULE AND FRAME ELEVATIONS. PROVIDE 1/4" WD. SHIM CONT. @ JAMBS. PROVIDE BACKER ROD AND CONT. SEALANT @ PERIMETER OF FRAME. TYP. BOTH SIDES WHERE APPLICABLE.
- R. PRE-FIN. EXTRUDED ALUM. CLOSURE TRIM W/ HEMMED EDGE. COLOR TO MATCH ADJACENT STOREFRONT. SEPARATE DISSIMILAR METALS WHERE APPLICABLE.

JOB NO.	1429	
DATE	DEC 2, 2014	
DRAWN	ALC, ASC	
CHECKED	-	
COPYRIGHT © 2015 SHERMAN CARTER BARNHART ARCHITECTS, PLLC		
REVISIONS		
No.	Description	Date