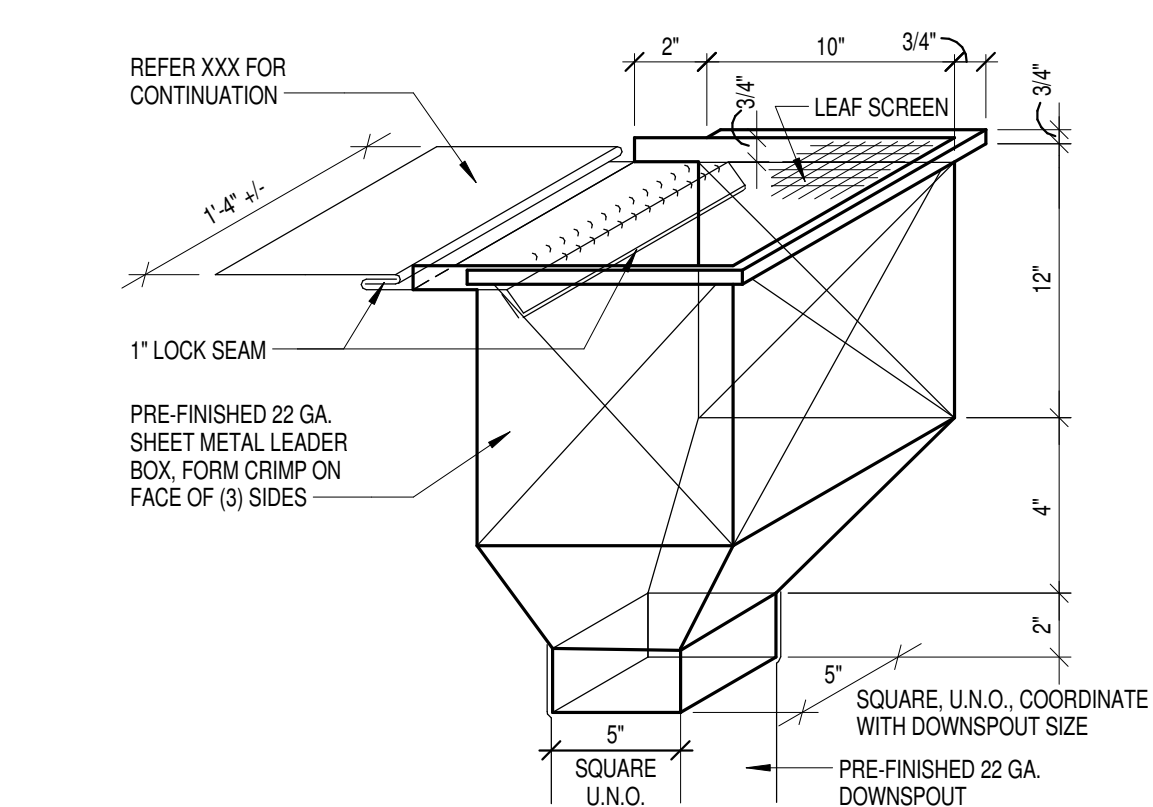
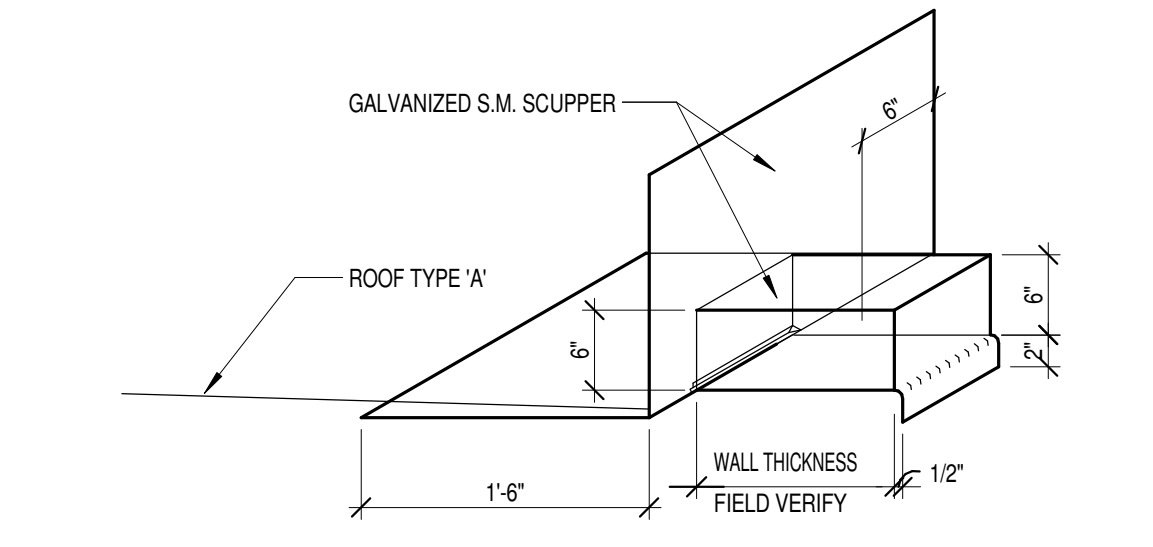


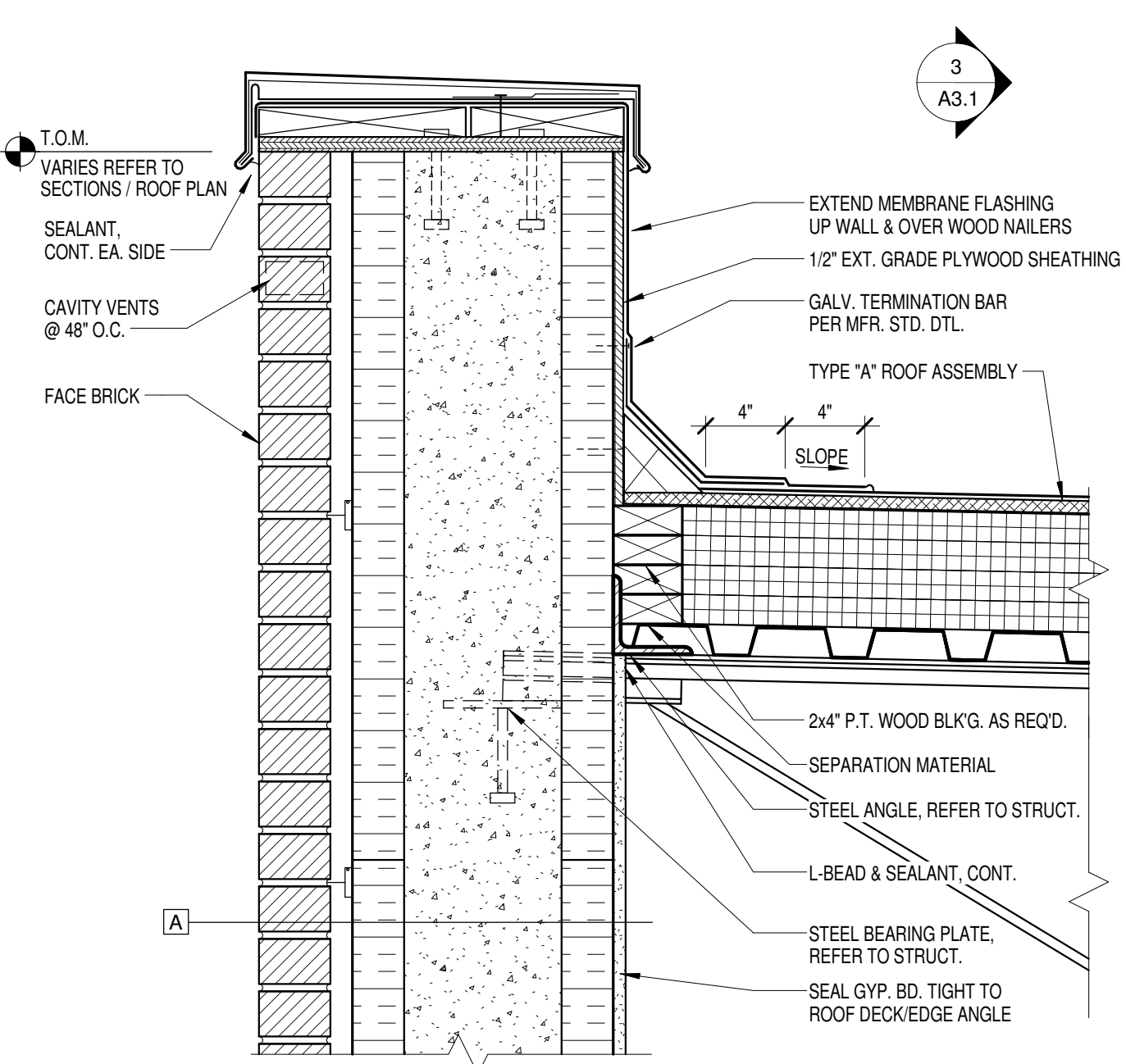
429 CECILIA VALLEY ELEMENTARY SCHOOL 11/23/15 5:08:07 AM



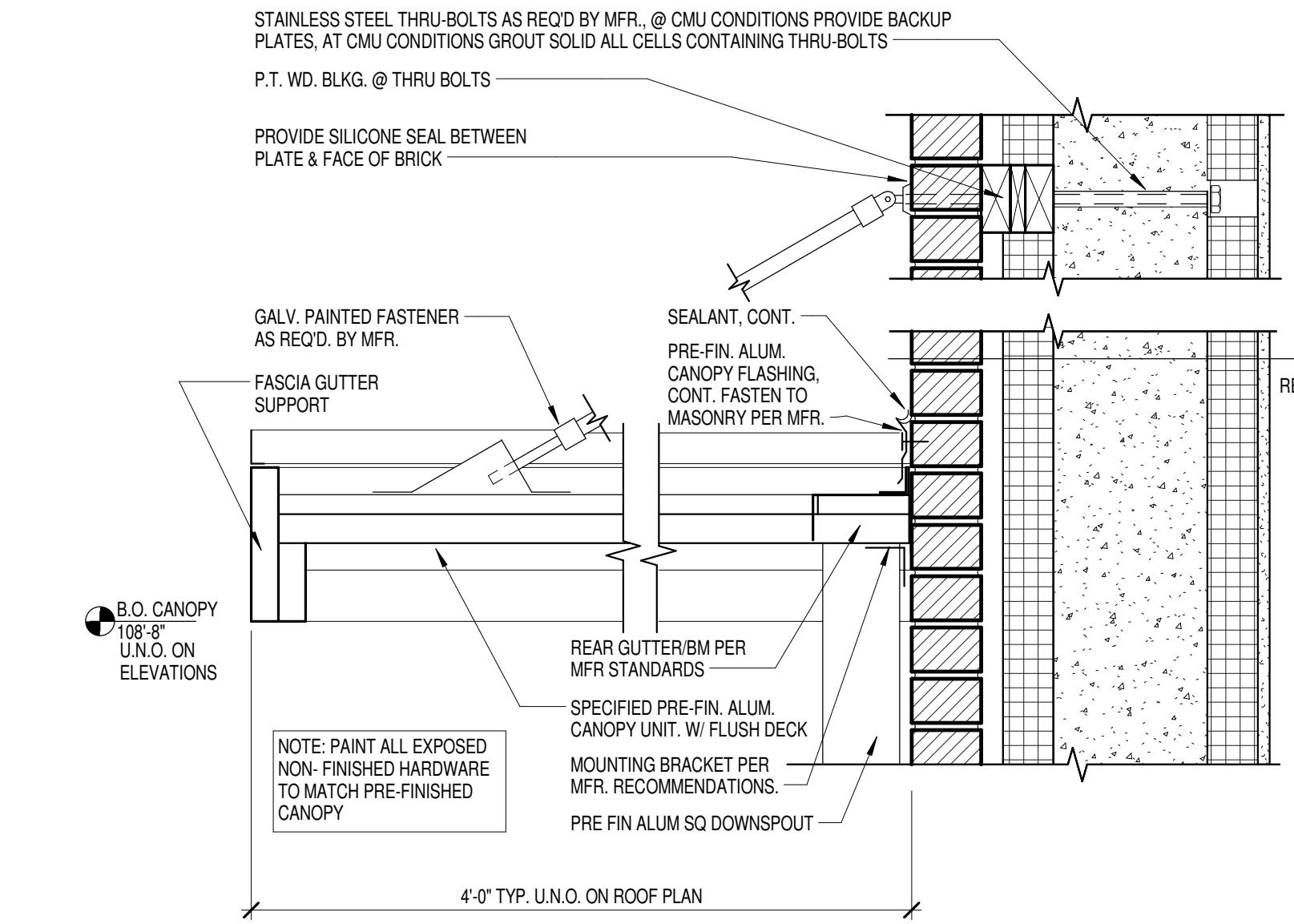
7 TYPICAL CONDUCTOR HEAD DETAIL
1 1/2" = 1'-0"



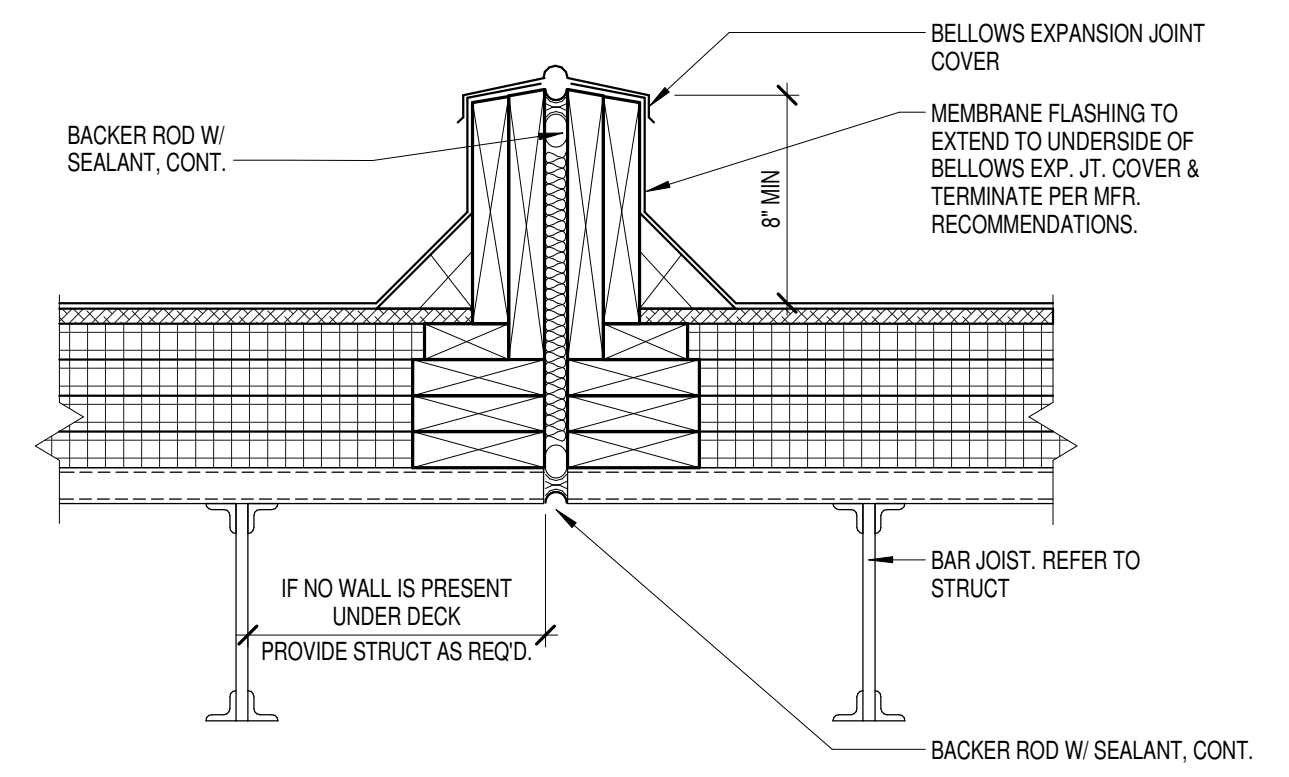
8 TYPICAL OVERFLOW SCUPPER DETAIL
1 1/2" = 1'-0"



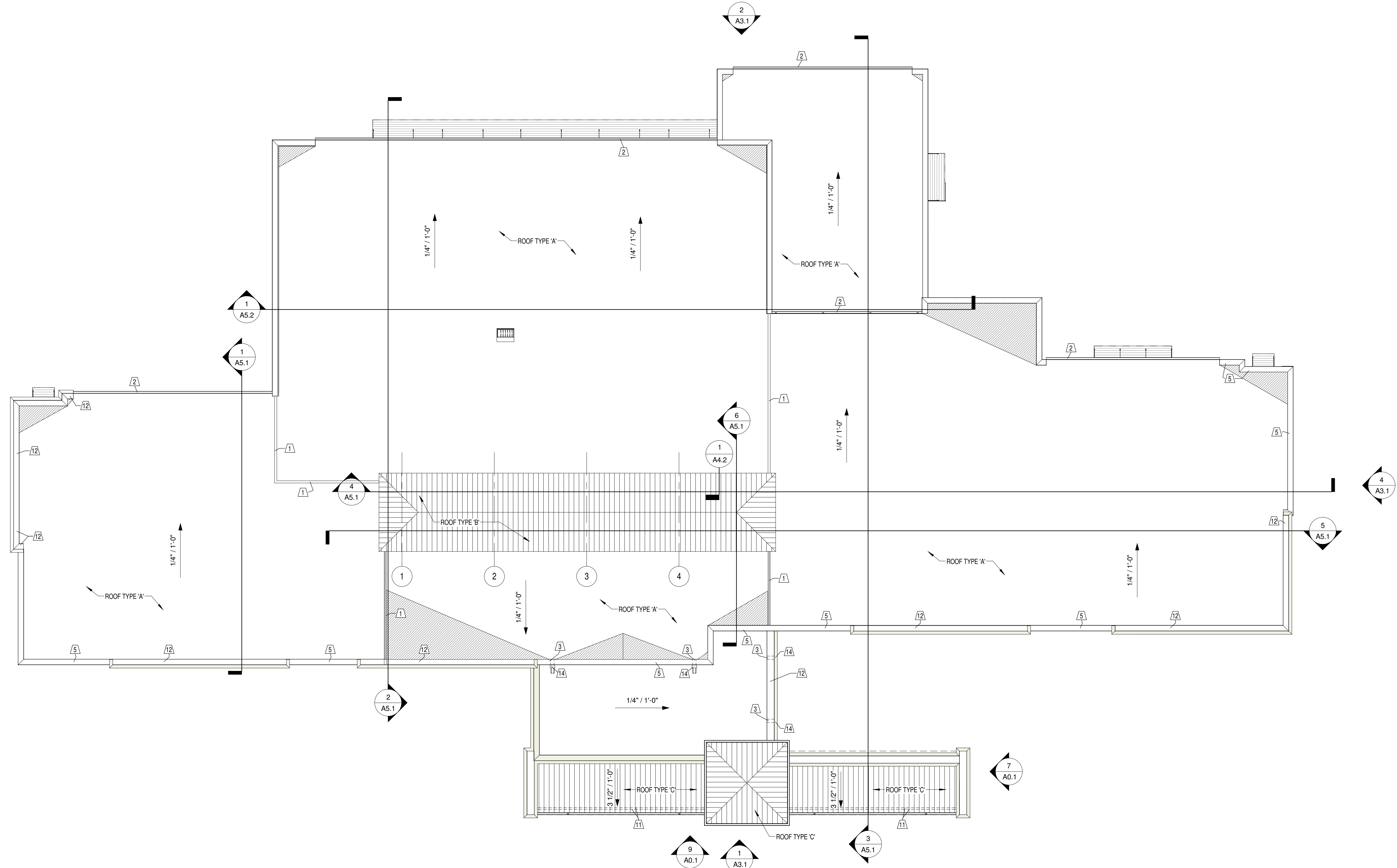
9 TYPICAL PARAPET DETAIL
1 1/2" = 1'-0"



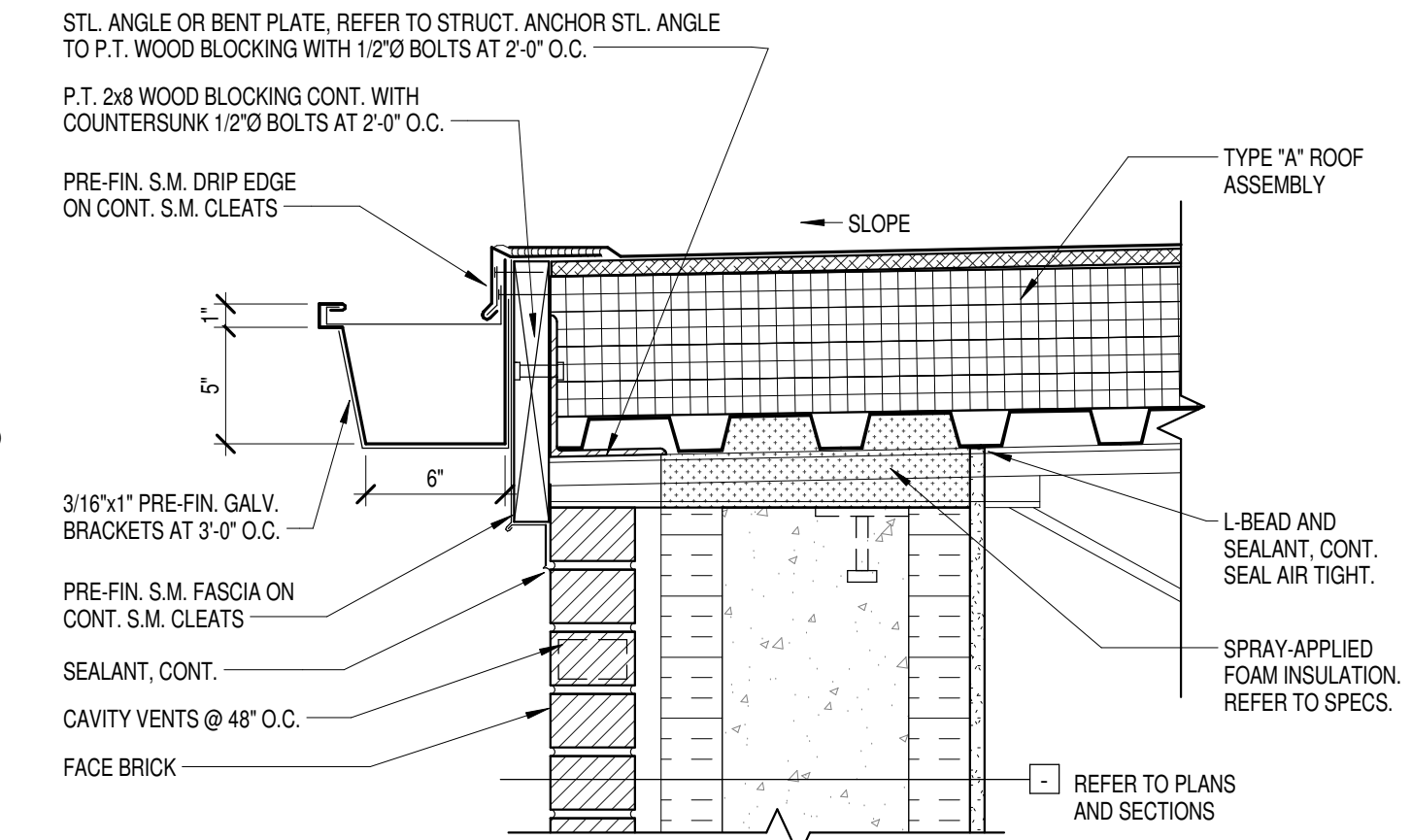
10 TYPICAL CANOPY DETAIL
1 1/2" = 1'-0"



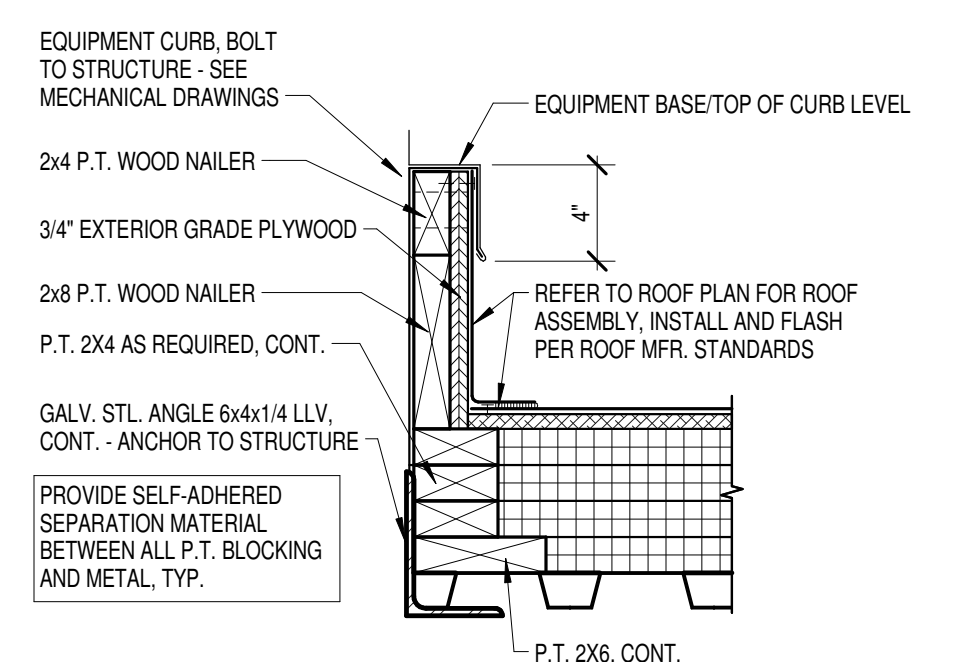
11 TYPICAL EXPANSION JOINT DETAIL
1 1/2" = 1'-0"



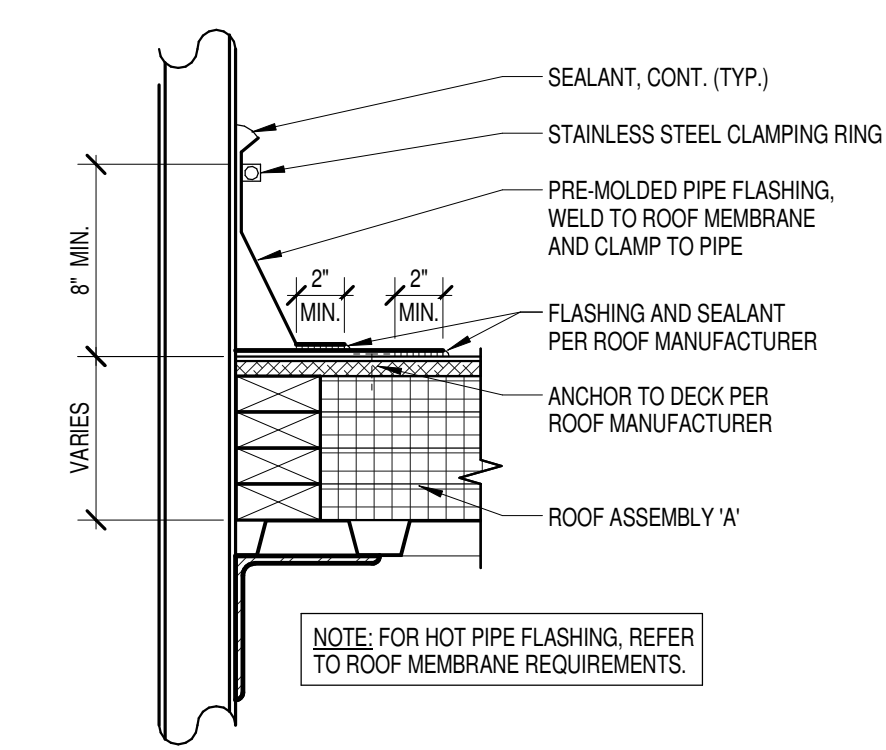
1 ROOF PLAN
1/16" = 1'-0"



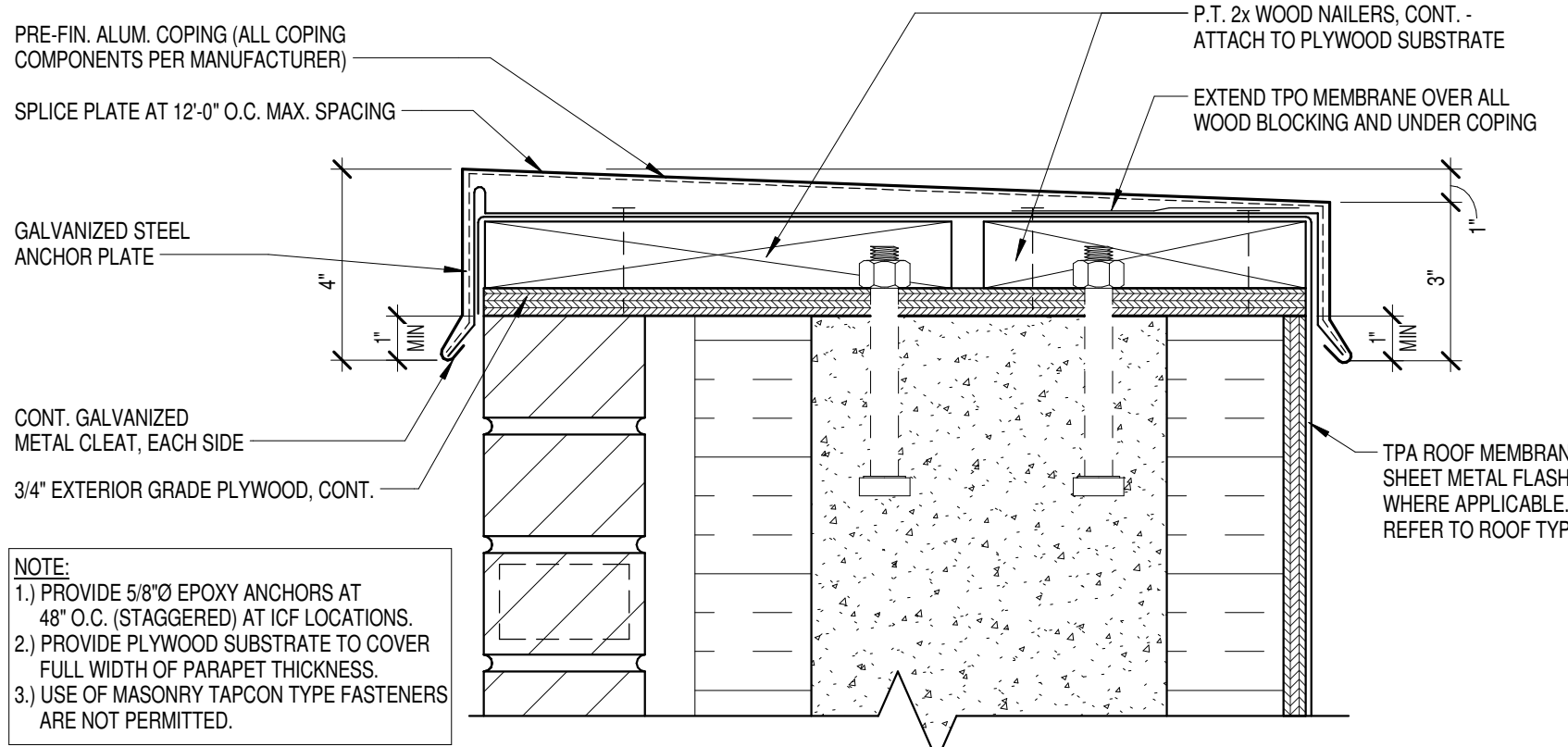
6 TYPICAL GUTTER DETAIL
1 1/2" = 1'-0"



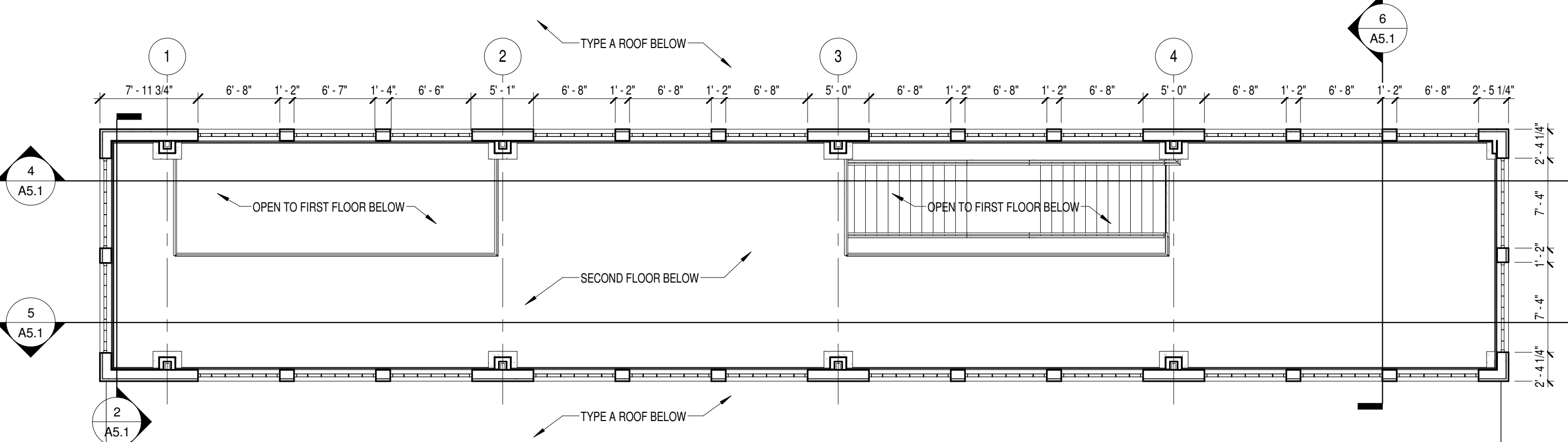
5 TYPICAL MECHANICAL CURB DETAIL
3" = 1'-0"



4 TYPICAL PIPE PENETRATION DETAIL
1 1/2" = 1'-0"



3 TYPICAL COPING DETAIL
3" = 1'-0"



2 CLEARSTORY PLAN
1/8" = 1'-0"

GENERAL ROOF NOTES

1. AT ROOF TYPE 'A' ROOF SLOPES SHALL NOT BE LESS THAN 1/4" RISE PER 1'-0" RUN. PROVIDE CRICKETS SUCH THAT A MIN. 1/4" RISE PER FT. IS MAINTAINED. REFER TO ROOF PLANS FOR SLOPES GREATER THAN 1/4" FT.
2. ALL FLASHING WORK SHALL BE DONE SUCH THAT A WATERTIGHT INSTALLATION IS ACHIEVED AND MAINTAINED.
3. REFER TO STRUCTURAL DWGS. FOR SPECIFIC STRUCTURAL ELEVS.
4. REFER TO MECH. DRAWINGS FOR ROOF TOP ITEMS NOT SHOWN ON THIS PLAN.
5. FLASH ALL ROOF PENETRATIONS PER MANUFACTURER'S STANDARD DETAILS.
6. REFER TO THIS SHEET FOR TYP. ROOF DETAILS.
7. CONTRACTOR SHALL NOT COVER ANY WEERS, BRICK VENTS, EXPANSION JOINTS, FLASHINGS, OR COPING. ROOFING SHALL TERMINATE AS SHOWN ON DETAILS.
8. CONTRACTOR TO COORDINATE INSTALLATION OF ROOFING FLASHING WITH OTHER TRADES FOR ADDITIONAL WORK REQD. (I.E. FLASHING OF EQUIPMENT CURBS)
9. CONTRACTOR TO PROVIDE ICE AND WATER SHIELD UNDERLAYMENT ON ENTIRE AREA OF ROOF ASSEMBLY TYPE 'B'.
10. ALL DOWNSPOUTS THAT DISCHARGE ONTO A LOWER TPA ROOF SYSTEM MUST HAVE PRECAST CONC. SPLASHBLOCKS ON WALKWAY PADS. SEE SPEC. FOR SPLASHBLOCKS.
11. INSTALL ROOF FLASHING TO EXTEND UP FULL HEIGHT OF PARAPET WALL AND OVER NAILERS AT TOP OF COPING UNLESS NOTED OTHERWISE.

ROOF KEY NOTES

1. ROOF EXPANSION JOINT. REFER TO DETAIL 11/A4.1.
2. PRE-FINISHED 6"x6" SHAPED METAL (S.M.) GUTTER. REFER TO TYP. DETAIL 6/A4.1.
3. OVERFLOW SCUPPER - REFER TO DETAIL 8/A4.1.
4. VENT THRU ROOF - REFER TO PLUMBING DRAWINGS FOR SIZE AND LOCATION. REFER TO TYP. DETAIL 4/A4.1.
5. PRE-FINISHED METAL COPING - REFER TO TYP. DETAIL 3/A4.1.
6. 5' SQUARE PRE-FINISHED S.M. DOWNSPOUT. CONNECT TO DOWNSPOUT BOOT & BELOW GRADE DRAINAGE SYSTEM UNLESS SPLITTING TO LOWER ROOF. REFER TO SITE DWGS. AND BUILDING ELEVATIONS - SHEET A3.1.
7. PRE-MANUFACTURED ALUMINUM CANOPY - REFER TO DETAIL 10/A4.1 FOR TYPICAL DEPTH. LENGTH INDICATED ON PLAN.
8. WALL MOUNTED EXTERIOR ALUMINUM SUNSHADE SYSTEM W/ INTEGRAL OUTRIGGERS - REFER TO BUILDING ELEVATIONS. SHEET A3.1 AND TO WINDOW DETAILS.
9. PRECAST CONCRETE SPLASHBLOCK MOUNTED ON WALKWAY PADS.
10. PRE-MANUFACTURED HEAVY-DUTY FACTORY ALUMINUM MILL FINISH FIXED ROOF LADDER W/ WALK-THRU PLATFORM. GALV. EXPANSION BOLT AND GALV. SLEEVE THRU CONCRETE ICF WALL. SEAL ALL PENETRATIONS.
11. PROVIDE TWO ROWS, STAGGERED, PRE-FINISHED METAL ICE AND SNOW GUARD AT PERIMETER - INSTALL PER MANUFACTURER RECOMMENDATIONS.
12. GLASS FIBER REINFORCED CORNICE AND COPING - REFER TO BUILDING ELEVATIONS. SHEET A3.1.
13. ROOFTOP MECHANICAL EQUIPMENT & PENETRATIONS - REFER TO MECHANICAL DRAWINGS. PROVIDE CRICKETS WHERE APPLICABLE.
14. CONDUCTOR HEAD. REFER TO DETAIL 7/A4.1. CONNECT TO DOWNSPOUT.

ROOF LEGEND

- ROOF ASSEMBLY - TYPE 'A'
WHITE GRAVEL COVERED 4-PLY BUILT-UP ROOF SYSTEM OVER 1'-2" WOOD FIBER NAILABLE INSULATION ON 6" MIN. POLYISOCYANURATE OVER METAL DECK (1/4" PER 1'-0" SLOPE, MIN.)
- ROOF ASSEMBLY - TYPE 'B'
PRE-FIN. ARCHITECTURAL STANDING SEAM MTL. ROOF SYSTEM OVER (1) LAYER OF ICE AND WATER SHIELD OVER 4'-2" RIGID NAILABLE INSULATION ON MTL. ROOF DECK.
- ROOF ASSEMBLY - TYPE 'C'
PRE-FIN. ARCHITECTURAL STANDING SEAM MTL. ROOF SYSTEM OVER (1) LAYER OF ICE AND WATER SHIELD OVER 5/8" NAILABLE SHEATHING ON MTL. ROOF DECK.
- INDICATES CRICKET. SLOPE 1/4" PER FOOT IN DIRECTION OF ARROW
- INDICATES ROOF WALKWAY PAD. REFER TO SPECIFICATIONS
- DS PRE-FIN. 5"x5" S.M. DOWNSPOUT. TERMINATE INTO BOOT, U.N.O. PROVIDE 6"x6" @ GYM & KITCHEN ROOFS ONLY.
- RD ROOF DRAIN. REFER TO DETAIL 8/A4.1
- ORD OVERFLOW ROOF DRAIN. REFER TO DETAIL 8/A4.1
- VTR VENT THRU ROOF. REFER TO DETAIL 4/A4.1
- GEJ GUTTER EXPANSION JOINT PER SMACMA STANDARDS
- RELIEF AIR. REFER TO MECHANICAL DWGS. AND DETAIL 7/A4.1.
- EXHAUST FAN / OA HOOD. REFER TO MECH. DWGS REFER TO DETAIL 7/A4.1 FOR ROOF REQUIREMENTS.
- CU CONDENSING UNIT. PROVIDE P.T. WD. 4x4 AT BASE AND ADDITIONAL LAYER OF ROOFING MATERIAL.

JOB NO.	1429	
DATE	DEC 2, 2014	
DRAWN	Author	
CHECKED	Checker	
COPYRIGHT © 2015 SHERMAN CARTER BARNHART ARCHITECTS, PLLC		
REVISIONS		
No.	Description	Date
SHEET		