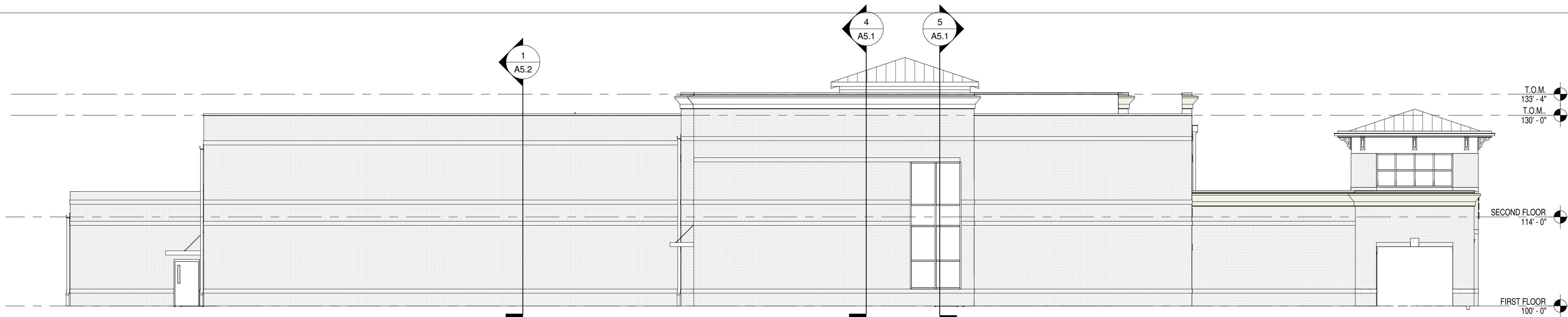


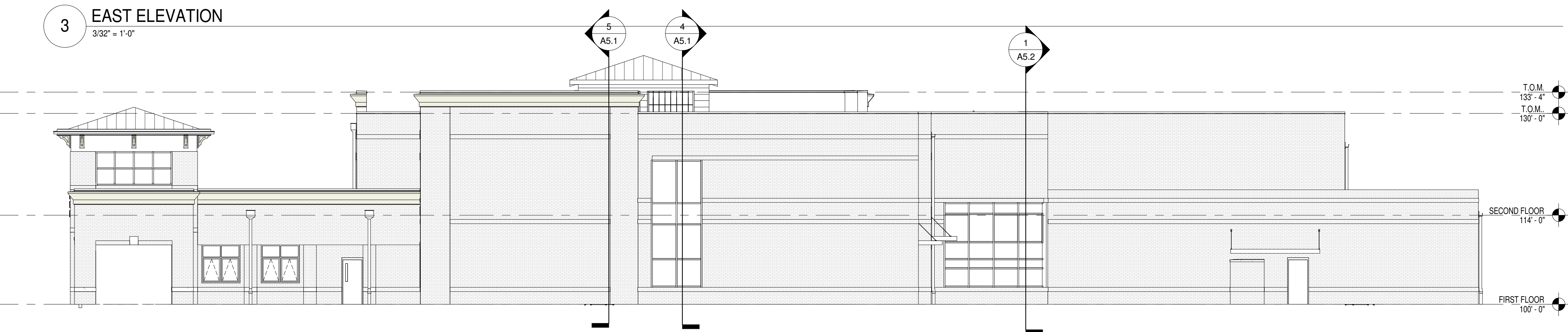
1 NORTH ELEVATION  
3/32" = 1'-0"



2 SOUTH ELEVATION  
3/32" = 1'-0"



3 EAST ELEVATION  
3/32" = 1'-0"



4 WEST ELEVATION  
3/32" = 1'-0"

### GENERAL ELEVATION NOTES

BUILDING ELEVATIONS SHOWN ON THIS DRAWING ARE INTENDED FOR GENERAL REFERENCE PURPOSES ONLY. REFER TO REFERENCED SECTIONS AND DETAILS FOR MORE FULLY DESCRIBED CONDITIONS AND REQUIREMENTS.

HATCH INDICATES FACE BRICK (FIELD COLOR), TYPICAL

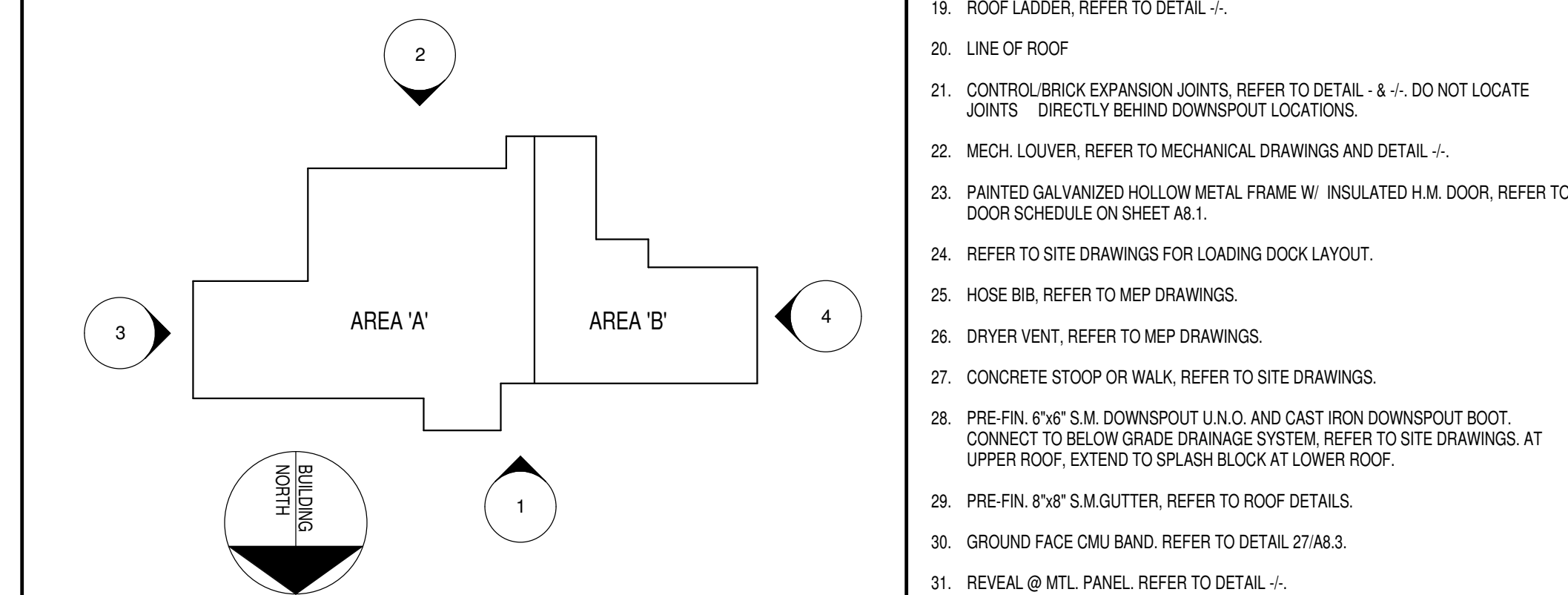
- MATERIALS INDICATIONS AND DESCRIPTIONS, VERTICAL AND OTHER DIMENSIONS SHOWN ON ONE BUILDING ELEVATION APPLY TO OTHER BUILDING ELEVATIONS WHERE SHOWN UNLESS NOTED OTHERWISE.
- LINE REPRESENTING PAVING AND FINISH GRADES ARE APPROXIMATE AND ARE SHOWN FOR REFERENCE PURPOSES ONLY. REFER TO SITE PLANS FOR SPECIFIC GRADE AND SPOT ELEVATIONS AT EACH RESPECTIVELY.
- REFER TO FLOOR PLANS FOR LOCATION AND DOOR SCHEDULE FOR FULL EXTENT AND COMPLETE DESCRIPTION OF DOOR AND FRAME TYPES. PORTIONS OF DOORS, WINDOWS, STOREFRONTS, AND CURTAIN WALLS MAY BE CONCEALED BY OTHER BUILDING FEATURES SHOWN.
- REFER TO FLOOR PLANS FOR SPECIFIC ALUMINUM WINDOW TYPES AND WINDOW ELEVATIONS.
- LOCATIONS OF CONTROL/EXPANSION JOINTS IN MASONRY WALLS ARE SHOWN ON THIS DRAWING. SEE TYPICAL DETAILS ON SHEET A6.2 FOR SPECIFIC REQUIREMENTS AT RESPECTIVE LOCATIONS.
- ALL EXPOSED NEW EXTERIOR MASONRY SHALL RECEIVE APPLICATION OF SPECIFIED WATER REPELLENT.
- ALL EXPOSED EXTERIOR METAL SUCH AS FLASHINGS, COPINGS, GUTTERS, DOWNSPOUTS AND LADDERS SHALL RECEIVE THE SPECIFIED FIELD OR SHOP APPLIED FINISH COATING.

### ELEVATION KEY NOTES

NOTE: NOT ALL NOTES APPLY TO THIS SHEET.

- PRE-FIN. SUNSHADE. REFER TO STOREFRONT ELEVATIONS ON A6.2.
- EXTERIOR LIGHT FIXTURE. MOUNT @ 7'-4" TO CENTER. REFER TO ELEC. DRAWINGS
- GROUND FACE CMU BAND PROJECTED 3/8".
- PRE-FIN. 5"x5" S.M. DOWNSPOUT U.N.D. EXTEND TO SPLASH BLOCK @ LOWER ROOF OR TO MTL. ROOF BELOW. REFER TO ROOF PLAN.
- PRE-FIN. 6"x6" S.M. GUTTER. REFER TO ROOF DETAILS.
- PRE-FIN. S.M. COPING. REFER TO ROOF DETAILS.
- ROOF ASSEMBLY TYPE "A"
- ROOF ASSEMBLY TYPE "B"
- PRE-FIN. 5"x5" S.M. DOWNSPOUT U.N.D. AND CAST IRON DOWNSPOUT BOOT. CONNECT TO BELOW GRADE DRAINAGE SYSTEM. REFER TO SITE DRAWINGS.
- PRE-FIN. ALUM. STOREFRONT SYSTEM
- ROOF ASSEMBLY TYPE "C"
- PRE-FIN. S.M. FASCIA TRIM. REFER TO ROOF DETAILS.
- PRE-FIN. S.M. RAKE TRIM. REFER TO ROOF DETAILS.
- FINISH GRADE VARIES. REFER TO SITE DRAWINGS.
- DOWNSPOUT AT PRE-ENGINEERED CANOPY
- PRE-FIN. MTL. WALL PANEL. REFER TO DETAILS AND SPECIFICATIONS.
- PRE-FIN. PRE-ENGINEERED ALUMINUM CANOPY. MOUNT AT 8'-8" A.F.F. TO BOTTOM UNLESS NOTED OTHERWISE. REFER TO DETAIL -.
- ROOF OVERFLOW NOZZLE. COORD. HEIGHT W/ CEILING AND ROOF.
- ROOF LADDER. REFER TO DETAIL -.
- LINE OF ROOF
- CONTROL/BRICK EXPANSION JOINTS. REFER TO DETAIL - & -. DO NOT LOCATE JOINTS DIRECTLY BEHIND DOWNSPOUT LOCATIONS.
- MECH. LOUVER. REFER TO MECHANICAL DRAWINGS AND DETAIL -.
- PAINTED GALVANIZED HOLLOW METAL FRAME W/ INSULATED H.M. DOOR. REFER TO DOOR SCHEDULE ON SHEET A6.1.
- REFER TO SITE DRAWINGS FOR LOADING DOCK LAYOUT.
- HOSE BIB. REFER TO MEP DRAWINGS.
- DRYER VENT. REFER TO MEP DRAWINGS.
- CONCRETE STOOP OR WALK. REFER TO SITE DRAWINGS.
- PRE-FIN. 6"x6" S.M. DOWNSPOUT U.N.D. AND CAST IRON DOWNSPOUT BOOT. CONNECT TO BELOW GRADE DRAINAGE SYSTEM. REFER TO SITE DRAWINGS. AT UPPER ROOF. EXTEND TO SPLASH BLOCK AT LOWER ROOF.
- PRE-FIN. 8"x8" S.M. GUTTER. REFER TO ROOF DETAILS.
- REVEAL @ MTL. PANEL. REFER TO DETAIL -.

### KEY PLAN



JOB NO.	1429	
DATE	DEC 2, 2014	
DRAWN	ALC, ASC	
CHECKED	-	
COPYRIGHT © 2015 SHERMAN CARTER BARNHART ARCHITECTS, PLLC		
REVISIONS		
No.	Description	Date
SHEET		