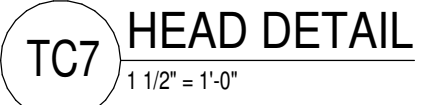
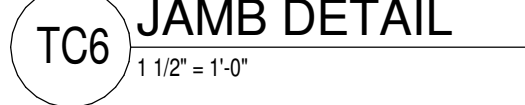
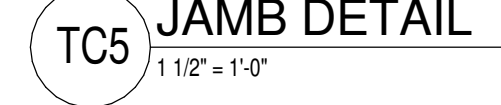
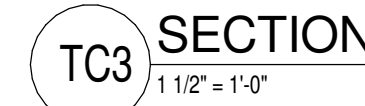




REFER TO DETAIL 3/A2.2 FOR TYPICAL GRADE
BAR AND ACCESSORIES LAYOUT



- GENERAL TOILET ACCESSORY NOTES:

- ## KEYNOTES

- NOTE: NOT ALL KEYNOTES MAY APPLY TO THIS SHEET.
1. LINE OF GYP. BOARD SOFFIT ABOVE, REFER TO REFLECTED CEILING PLANS.
2. MASONRY BENCH, REFER TO DETAIL XXX.
3. LINE OF LINTEL ABOVE (PAINT), REFER TO REFLECTED CEILING PLAN AND STRUCT. DWGS.
4. PAINTED STEEL TUBE & PIPE GUARDRAIL, REFER TO DETAIL XXX.
5. FIXED INTERIOR LADDER TO ROOF, REFER TO DETAIL XXX.
6. REFER TO SITE DWGS. FOR CONC. WALKS, STPOOS, ETC.
7. CEILING MOUNTED PROJECTOR IN C.I. AND C.G. MTD. BRACKET (IN CONTRACT) FOR ASSOCIATED ACTIVE BOARD, REFER TO REFLECTED CEILING PLAN/FLOOR LOCATIONS AND ELECTRICAL DRAWINGS FOR REQUIREMENTS.
8. OVERHEAD COILING DOOR ABOVE, REFER TO DETAIL XXX.
9. 4" W/ WALL MOUNTED ACTIVE BOARD N.I.C., REFER TO ELECTRICAL DWGS.
10. ACTIVE BOARD N.I.C. BY OWNER.
11. PREFIN. EXTERIOR MECH. LOUVER, REFER TO BUILDING ELEVATIONS, MECH. DRAWINGS AND DETAIL D/A3.
12. BASKETBALL GOAL, ABOVE, REFER TO SPECS. ALL EXPOSED BKG. REQUIRED FOR GOAL ATTACHMENT SHALL BE PAINTED TO MATCH ADJACENT WALL COLOR.
13. LINE OF BLEACHERS FULLY EXTENDED, N.I.C. UNDER SEPARATE CONTRACT PACKAGE.
14. LINE OF BLEACHERS IN RETRACTED POSITION, N.I.C. UNDER SEPARATE CONTRACT PACKAGE.
15. KILN & ENCLOSURE - N.I.C.
16. WALL MOUNTED FACILITY MAILBOXES, REFER TO DETAIL C/A1.3
17. RECESSED HANDLE LOOKERS, REFER TO BASE DETAIL D/F5.1.
18. PROVIDE 5/8" CP. BD. ADHERED TO CONCRETE OR MASONRY. REFER TO WALL PARTITION TYPES, SHEET A01.
19. RECESSED FLOOR SLAB BELOW COOLER & FREEZER, REFER TO DETAIL C/F5.1 AND STRUCT. DWGS. FOR DETAILS.
20. FURNITURE, EQUIPMENT, OR STORAGE UNITS - N.I.C.
21. LINE OF PRE-MANUF. CANOPY ABOVE, REFER TO DETL. F/A1.4
22. COMPUTER STATION, N.I.C.
23. LINE OF WALL MOUNTED INT. SIGHT SHIELD ABOVE ABOVE, REFER TO PLANS, ELEVATIONS, DETAILS (SHT. A2.2 & 5.4) & SPECIFICATIONS.
24. LINE OF WALL MOUNTED INTERIOR LIGHTS/HV. ABOVE.
25. EDGE OF RAISED PLATFORM, REFER TO DETAIL J/A4.1.
26. WALL MOUNTED HANDRAIL, REFER TO DETL. E/A2.3.
27. 16" W/ WIDE ATHLETIC WALL PADS, REFER TO SPECIFICATIONS.
28. ROOF/CANOPY BELOW, REFER TO ROOF PLAN, SHEET A1.5.
29. 8" W/ WIDE ATHLETIC WALL PADS, REFER TO SPECIFICATIONS.
30. LINE OF LINTEL ABOVE, COORD. HEIGHT W/ KITCHEN EQUIP. MFR.
31. LINE OF FLOOR TRANSITION STRIP, REFER TO DETAILS SHT. A5.1.
32. COILING COUNTER SHUTTER, REFER TO DETAIL B/F5.1.1.
33. STRUCT. STL. COLUMN, REFER TO STRUCT. DWGS. (PAINT)
34. LINE OF WALL BELOW
35. STRUCTURAL SEPARATION AT FIREWALL, 38" COL'D JOINT W/ BACKER ROD AND SEALANT - BOTH SIDES & FULL HEIGHT OF WALL. DO NOT JOINT ADJACENT W/AL, ICF, OR METAL STUD TUBES TO FIRE WALL.
36. LOCATION OF WALL MOUNTED LCD TV FRAME, 46" LCD TV SCREEN / DISPLAY PROVIDE PRESSURE-BATTENED/ARTICULATING ARM. MODEL #2475R/30R OR APPROVED EQUAL TO 46" LCD TV(S). MOUNT TO RESULT IN LOWEST COMPONENT OF OR BRACKET TO BE 8" A F.F. (CONFORM LOCAL CODES) OWNER, REFER TO GENERAL NOTES ON SHEET A01.1 FOR REINFORCING / BLOCKING REQUIRED. REFER TO ELECTRICAL DRAWINGS FOR ADDITIONAL ROUGH-IN / REQUIREMENTS.
37. FLOOR EXPANSION JOINT AND COVER, REFER TO DETL. P/A4.4.
38. FUTURE ELECTRONIC MESSAGE BOARD, REFER TO ELECTRICAL DRAWINGS FOR ROUGH-IN / ADDITIONAL REQUIREMENTS.
39. LIGHT FIXTURE ABOVE, REFER TO ELEC. DWGS.
40. SCOREBOARD ABOVE (N.I.C.), REFER TO ELECTRICAL DWGS. FOR REQUIREMENTS.
41. MARBLE THRESHOLD - REFER TO SHEET A5.1.
42. CAST STONE SILL - REFER TO SHEET A5.2 AND A5.3.

SYMBOLS LEGEND

- | | |
|--|--|
| | ROOM FINISH GROUPS (REFER TO SHEET N-1) |
| | ROOM NUMBER |
| | DOOR NUMBER (DOOR SCHEDULE SHEET A8.1) |
| | NEW WORK KEY NOTES (SHEETS A1.1 THROUGH A2.2) |
| | WALL TYPE (SCHEDULE SHEET N-1) |
| | ALUMINUM OR HOLLOW METAL WINDOW OR STOREFRONT TYPE
(REFER TO FLOOR PLANS AND SCHEDULE SHEETS A8.1-A8.2) |
| | TOILET ACCESSORIES (SCHEDULE SHEET A2.2) |
| | ELEVATION KEY NOTE (SHEET A3.1) |
| | ROOF KEY NOTE (SHEET A4.1) |
| | CEILING PLAN KEY NOTE (SHEETS A7.1-A7.3) |
| | SIGNAGE KEY NOTE (SHEETS A8.1-A8.3) |
| | ROOM / WALL DESIGNATION |
| | FB1 1 HOUR FIRE BARRIER |
| | FB2 2 HOUR FIRE BARRIER |
| | SO INCIDENTAL USE SEPARATION |
| | CONTROL JOINT. REFER TO A1.1 - A1.3 FOR LOCATIONS. REFER TO EXTERIOR ELEVATIONS FOR EXTERIOR LOCATIONS. |

KEY PLAN

