

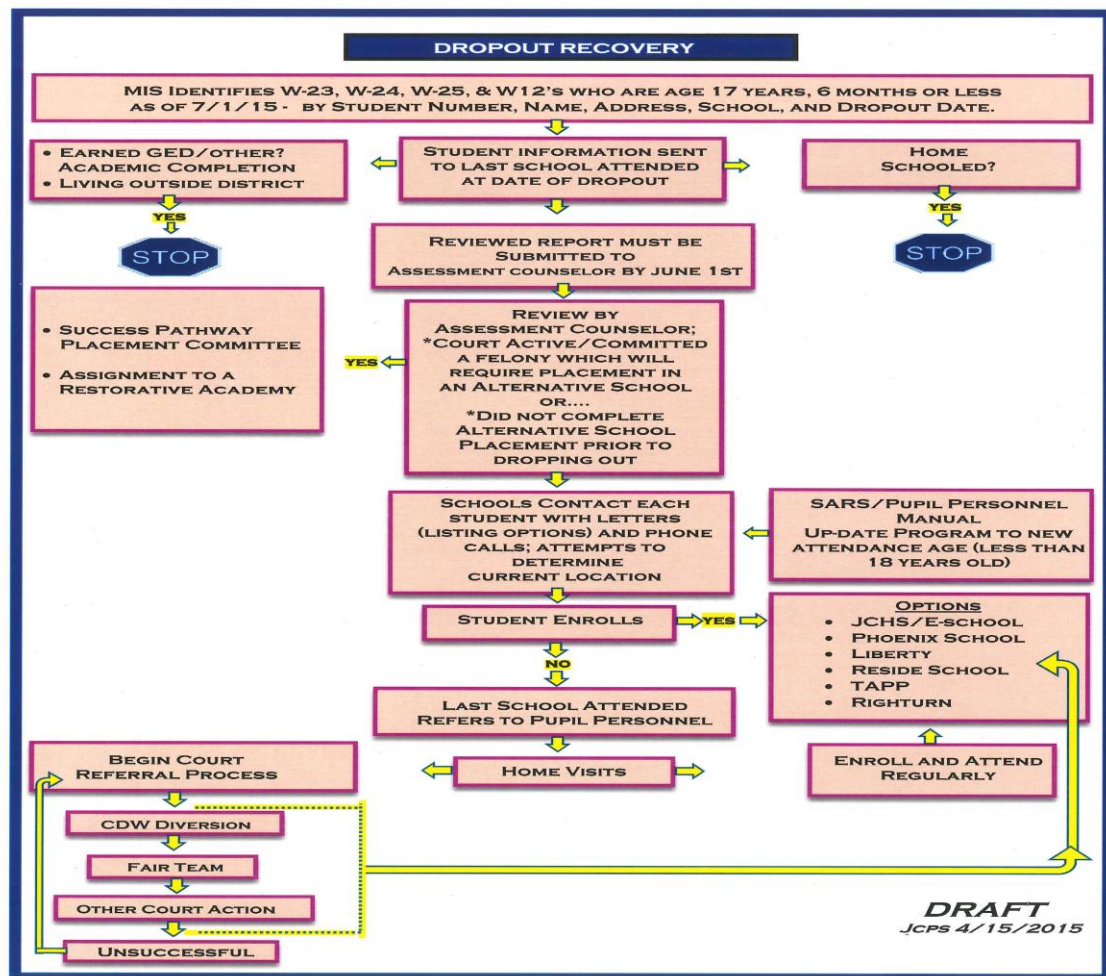
# DROPOUT RECOVERY SB97

Plan to assist 16 & 17 year-old students return to school

Jefferson County Board of Education Meeting

October 12, 2015

# DROPOUT RECOVERY PLAN



- Identified Dropouts under 18 prior to end of 2014-15 school year and schools received list of students needing to re-enroll as a result of SB 97.
- Local school attempts contact by phone, home visit and mails information on school options to identified students.
- Schools refer student to Pupil Personnel if unable to contact student or if student refuses to enroll.
- ADPP's follow up with identified students by conducting home visits, phone calls, and letters.
- By June 1<sup>st</sup> 2015, Assessment Counselor receives list of identified students for review and/or placement.

# DROPOUT RECOVERY PLAN

## ▪ *Summer Work*

- JCPS Assessment Counselor, in collaboration with Success Pathway Placement, assisted students/families with re-enrollment process and continued to search for identified students not registered/enrolled.
- Jefferson County High School/eSchool contacted students not returning to resides school to encourage enrollment at JCHS/eSchool.

## *Continuing Work*

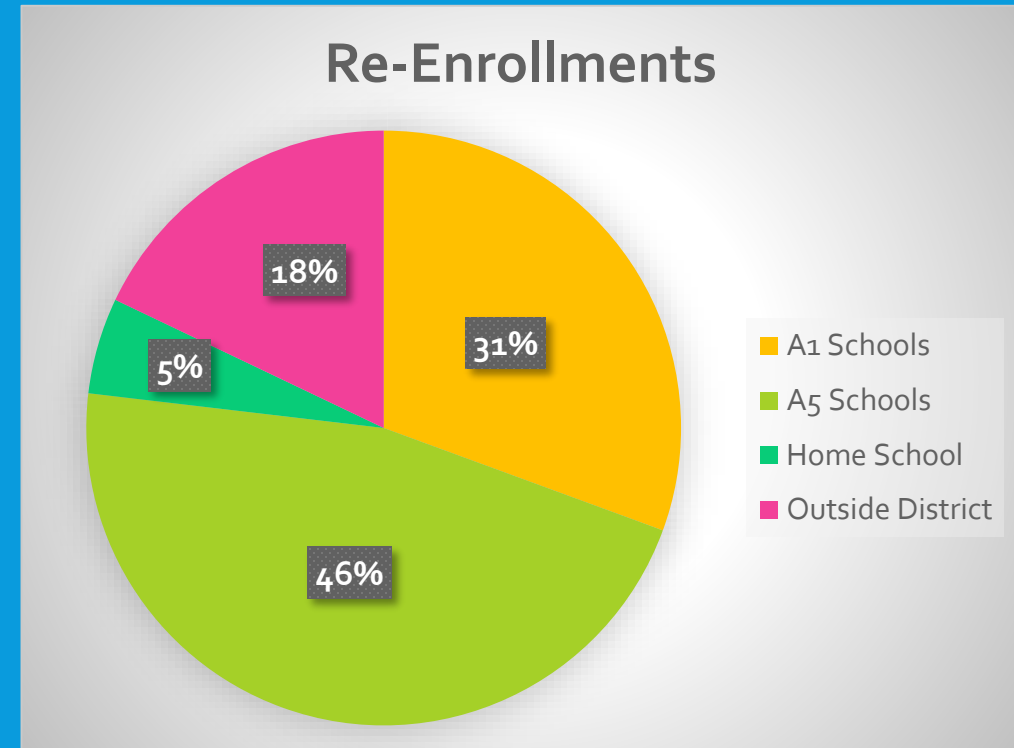
- Local schools, ADPPs, and JCPS Assessment Counselor continue collaboration on identified students to locate, make contact, and provide options for re-enrollment
- ADPPs begin court referral process (FAIR Teams) for students/families who do not enroll and are in violation of SB 97.

# DATA

## *217 Students Identified as dropouts*

- MIS Identified students who were w23, w24, w25, and w12 (dropouts) as of 7/1/15
- 134 Students were re-enrolled as of 10/7/15
- 83 Students not enrolled
  - Under 16 year old students – 7
  - 16 year old students-27
  - 17 year old students- 49

## 134 Students Re-Enroll



# AVAILABLE OPTIONS/WORK MOVING FORWARD

## *District Level Programs*

- Success Pathway Placement Committees
- Choice Academies
  - Liberty, JCHS/E-school, Phoenix School of Discovery, TAPP
- Restorative Academies
  - Minor Daniels Academy and Breckinridge Metro
- Edgenuity
- Transition Centers
- SRT, Mental Health Counselors, Drug/Alcohol Counselors

## *State Level Programs*

- Dual Credit Programs
- JobCorp
- Gateway to College National Network
- GED
- Challenge Academies-Bluegrass & Appalachian
- HB200- Family Accountability, Interventions, and Recovery (FAIR teams)