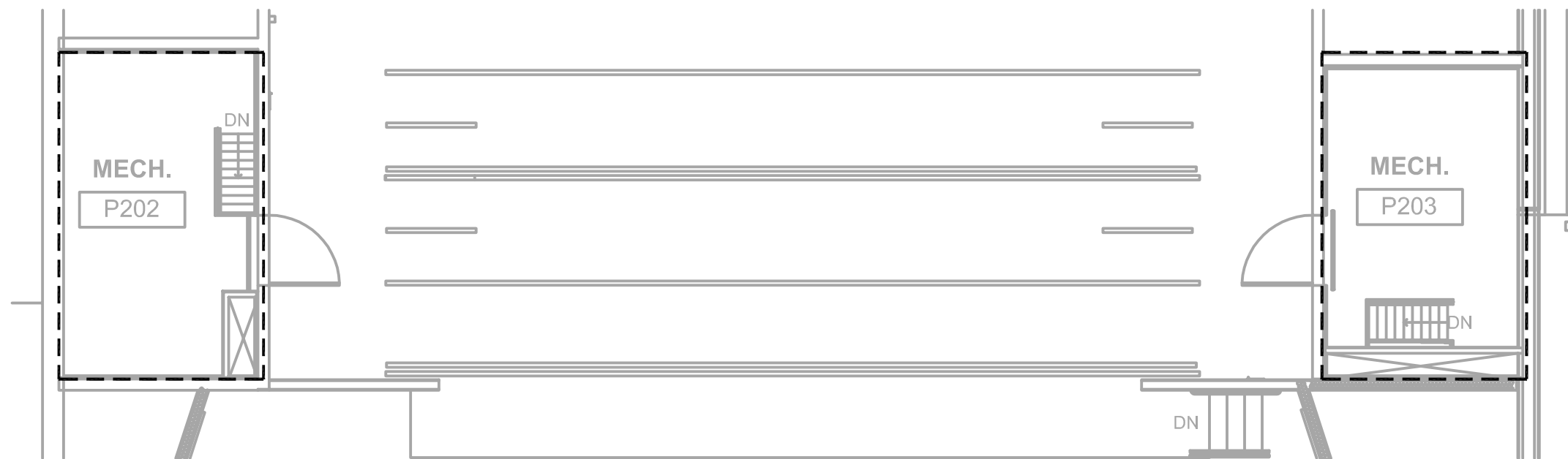


**A**  
FIRE PROTECTION  
Scale: 1/8" = 1'-0"



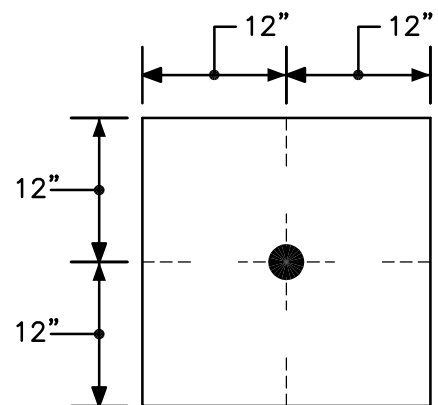
**B**  
FIRE PROTECTION - MECHANICAL MEZZANINE  
Scale: 1/8" = 1'-0"

**FIRE PROTECTION DESIGN NOTES:**

1. THE ENTIRE BUILDING SHALL BE 100% COVERED WITH A FIRE PROTECTION SYSTEM DESIGNED IN ACCORDANCE WITH NFPA 13. THE OUTLINED AREA SHALL BE PROTECTED WITH A WET TYPE SYSTEM.
2. THE SUCCESSFUL FIRE PROTECTION CONTRACTOR SHALL OBTAIN AND UTILIZE THE ARCHITECTURAL REFLECTED CEILING PLAN FOR LAYING OUT SPRINKLER HEADS.
3. THE ENTIRE OUTLINED AREA SHALL HAVE "SEMI-RECESSED" TYPE SPRINKLER HEADS UNLESS OTHERWISE NOTED ON THE PLANS. HEADS SHALL BE FED IN A RETURN-BEND ARRANGEMENT.
4. UTILIZE UPRIGHT AND/OR WALL MOUNTED TYPE SPRINKLER HEADS IN AREAS WITHOUT CEILINGS. ALL PIPING WITHIN THE THEATRE SHALL BE ROUTED THROUGH THE JOIST.
5. ALL SPRINKLER HEADS SHALL BE CENTERED IN BOTH DIRECTIONS OF A 2' x 2' CEILING TILE. REFER TO CEILING GRID DETAIL.
6. HVAC DUCTWORK MAINS SHALL BE INSTALLED PRIOR TO FIRE PROTECTION PIPING. PROVIDE DRAIN VALVES IN THE FIRE PROTECTION SYSTEM WHERE NECESSARY TO COMPLETELY DRAIN THE SYSTEM.
7. PROVIDE ALL REQUIRED DRAIN PIPING TO TEST FLOW SWITCHES. DISCHARGE DRAIN PIPING TO OUTDOORS.
8. SIZE ALL FIRE PROTECTION PIPING IN ACCORDANCE WITH NFPA 13. PIPE SIZING SHALL BE ACCOMPLISHED USING HYDRAULIC CALCULATIONS.
9. SUBMIT HYDRAULIC CALCULATIONS AND SYSTEMS DESIGN FOR REVIEW TO: THE M/E ENGINEER.
10. ALL EXPOSED PIPING WITHIN THE THEATER SHALL BE PAINTED. REFER TO ARCHITECTURAL SPECIFICATIONS.
11. ALL SPRINKLER HEADS LOCATED IN SOFFITS SHALL BE FULLY RECESSED WITH WHITE CAPS.
12. REFER TO SPECIFICATIONS FOR DIFFERENT SPRINKLER HEAD TYPES.

**FIRE PROTECTION LEGEND**

SPRINKLER HEAD WITH REMOVABLE ESCUTCHEON PLATE	
UPRIGHT TYPE SPRINKLER HEAD	
SIDEWALL TYPE SPRINKLER HEAD	
NEW FIRE PROTECTION PIPING	
DOUBLE CHECK VALVE	
NEW O.S.&Y VALVE	
TAMPER SWITCH	
FLOW SWITCH	
PIPING RISE UP	
PIPING DOWN	



SPRINKLER HEADS TO BE INSTALLED IN CENTER OF 2x2 CEILING TILES.  
**2x2 CEILING TILE DETAIL**  
SCALE: NONE



studio kramer architects

3258 Ruckriegel Parkway, Louisville, KY 40299  
TEL 502.499.1100 FAX 499.1101



NELSON COUNTY SCHOOL DISTRICT  
288 WILDCAT LANE  
BARDSTOWN, KENTUCKY 40004

FLOOR PLAN - FIRE PROTECTION

NELSON COUNTY SCHOOLS - WEST CAMPUS  
THOMAS NELSON H.S.  
PHASE III

2885 NEW SHEPHERDSVILLE ROAD (HWY 245) BARDSTOWN, KENTUCKY 40004

BG 15-229

DATE : 08/17/2015  
DRAWN BY : CG  
CHECKED BY : DH  
REVISIONS :

2011-02

PHASE - 3

FP1.1

HS