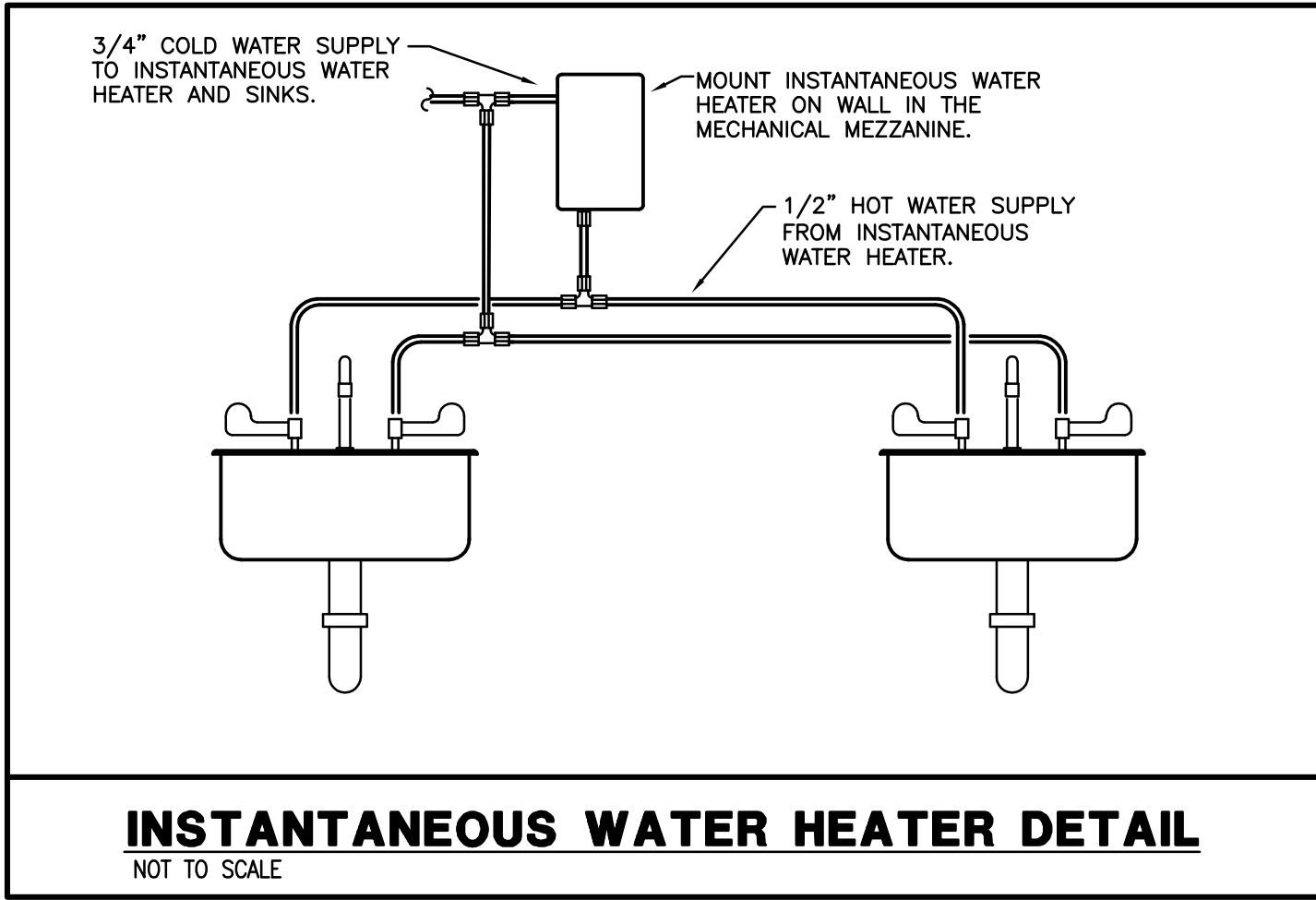



PLUMBING/MEDICAL GAS LEGEND	
TYP	TYPICAL
NTS	NOT TO SCALE
FD	FLOOR DRAIN
HB	HOSE BIBB
	POINT OF CONNECTION BETWEEN NEW AND EXISTING WORK
	POINT OF DEMOLITION
	POINT OF DEMOLITION AND CAP.
	EXISTING PIPING (THIN SOLID LINE)
	SANITARY PIPING
	STORM PIPING
	SANITARY VENT PIPING
	DOMESTIC COLD WATER PIPING
	DOMESTIC HOT WATER (110°F.) PIPING
	DOMESTIC HOT WATER (110°F.) RETURN PIPING
	(TURNED UP/DOWN) PIPING ELBOW
	PIPE TEE (TURNED UP/DOWN)
	BALL VALVE
	BALL VALVE IN THE RISE


PLUMBING FIXTURE SCHEDULE					
DESIGNATOR	FIXTURE	CW	HW	SAN	VENT
P-1A	WATER CLOSET, WALL-HUNG, ADA	1½"	--	4"	2"
P-2	LAVATORY, WALL HUNG, ADA	½"	½"	1½"	1½"
P-5	2 STATION ELECTRIC WATER COOLER	½"	--	1½"	1½"
P-12	DRINKING FOUNTAIN	½"	--	1½"	1½"
FD-1	FLOOR DRAIN 3" OUTLET	--	--	3"	1½"
FD-3	MECHANICAL ROOM FLOOR DRAIN W/ TRAP PRIMER	--	--	4"	2"
NOTES:					
● PIPE SIZES ARE AS INDICATED UNLESS OTHERWISE NOTED ON FLOOR PLANS AND RISER DIAGRAMS.					
● MINIMUM 2" SANITARY PIPING UNDERGROUND. PROVIDE ALL REQUIRED PIPING TO FIXTURES INDICATED ON THE FLOOR PLANS, INDICATED WITH A "P" DESIGNATION. PROVIDE PIPING OF SIZE INDICATED IN THIS SCHEDULE.					
● PIPE ALL EQUIPMENT (SUPPLIED BY OTHERS) AS REQUIRED TO OBTAIN A FULL AND OPERATIONAL SYSTEM. PROVIDE BACKFLOW PROTECTION AS/IF REQUIRED BY THE DETAILS AND BY THE KENTUCKY PLUMBING CODE. ALL EQUIPMENT SHALL BE CONNECTED PER THE MANUFACTURER'S REQUIREMENTS. THE PLUMBING CONTRACTOR SHALL ALSO INSTALL ANY DRAIN PIPING CONNECTIONS AND SPILL INDIRECTLY TO EITHER AN OPEN RECEPTICAL OR FLOOR DRAIN. REFER TO ARCHITECTURAL PLANS FOR EXACT PLACEMENT OF ALL EQUIPMENT.					

ELECTRIC WATER HEATERS							
TAG	MANUFACTURER	MODEL	KW	V/PHASE	GAL. STORAGE	RECOVERY @ 80° RISE	TEMPERATURE RISE
WH-1	EEMAX	SINGLE POINT SP4208	4.1	208/1Ø	N/A	N/A	56° @ 0.5 GPM
* EQUAL TO A.O. SMITH: LOCHINVAR, STATE							
* EQUAL TO EEMAX: STIEBEL ELTRON, TAKAGI							





studio kremer architects



Thomas Nelson H.S.
Phase III
2885 New Shepherdsville Road (HWY 245) Bardstown, Kentucky 40004

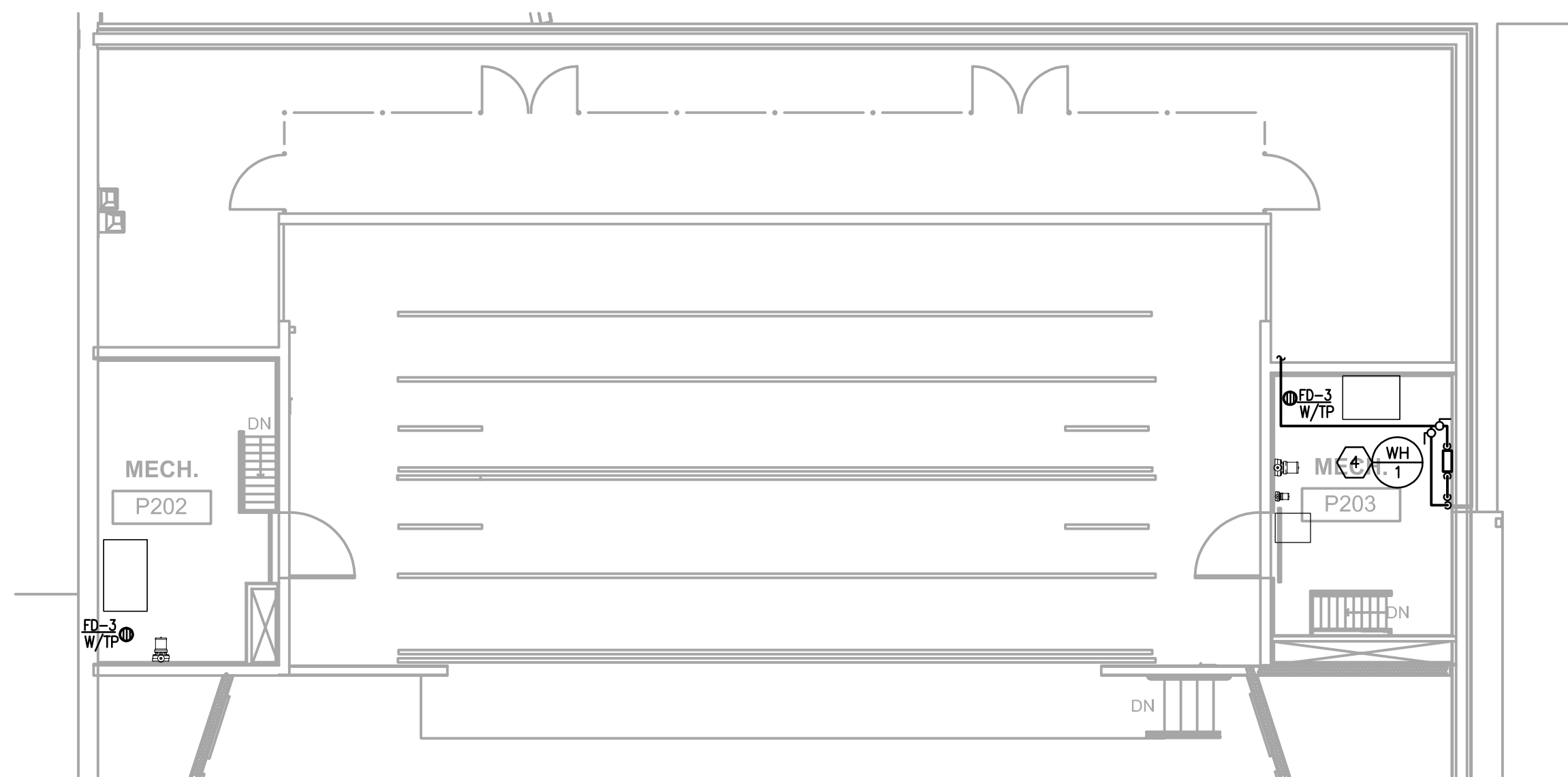
NELSON COUNTY SCHOOL DISTRICT
288 WILDCAT LANE
BARDSTOWN, KENTUCKY 40004

PLUMBING SCHEDULES & DETAILS
NELSON COUNTY SCHOOLS - WEST CAMPUS
THOMAS NELSON H.S.
PHASE III
2885 NEW SHEPHERDVILLE ROAD (HWY 245) BARDSTOWN, KENTUCKY 40004

BG 15-229

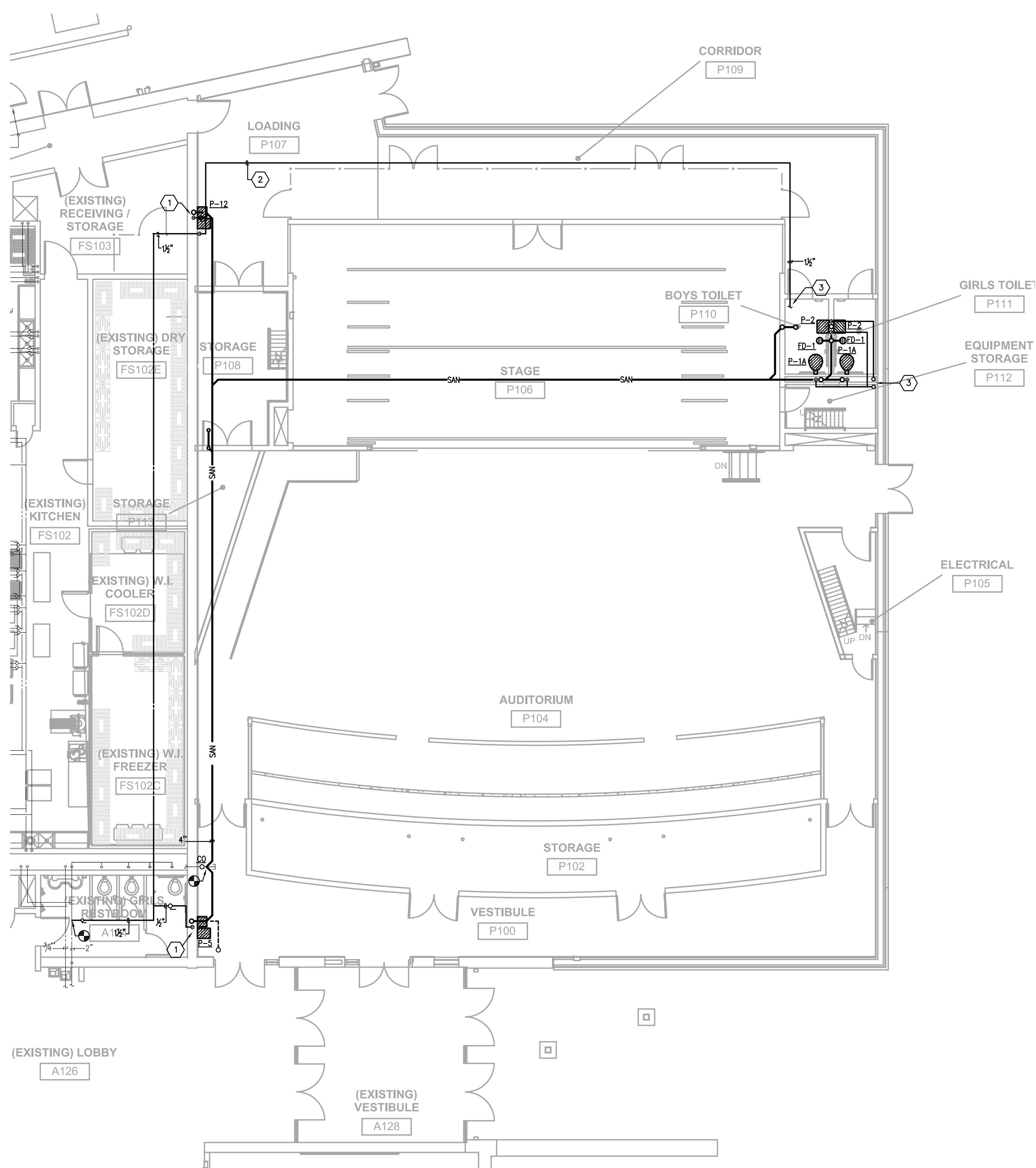
DATE : 08/17/2015
DRAWN BY : CG
CHECKED BY : DH
REVISIONS :

2011-02
PHASE - 3
P1.0
HS



B
P1.1
MECHANICAL MEZZANINE PLAN - PLUMBING
Scale: 1/8" = 1'-0"

- PLUMBING TAG NOTES:
1. ROUTE PIPING IN ICF FOAM.
 2. ROUTE PIPING TIGHT TO STRUCTURE.
 3. REFER TO THE MECHANICAL MEZZANINE PLAN FOR CONTINUATION OF DOMESTIC WATER.
 4. REFER TO THE WATER HEATER DETAIL ON SHEET P1.0 FOR FURTHER DETAIL.



A
P1.1
FIRST FLOOR PLUMBING
Scale: 1/8" = 1'-0"