

BASEBALL CLASSIFICATION

KHSAA

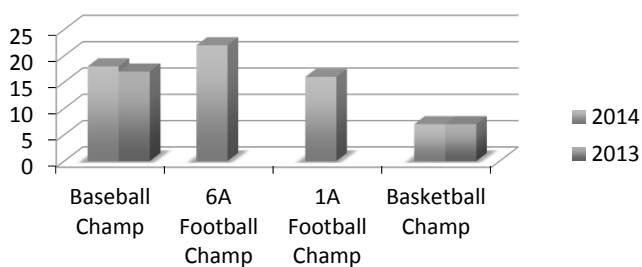
OVERVIEW

- Rationale
- Classification Plan
- Post Season Set Up
- Mileage Concerns

NUMBERS GAME

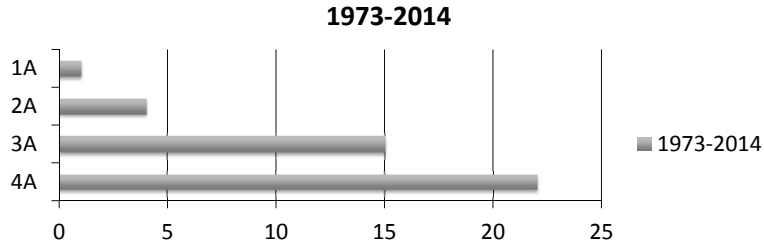
- HS Baseball – 10 Starting Positions
–Including the DH
- Position of Pitcher requires more depth than any single position in team sports

SPORTS COMPARISON



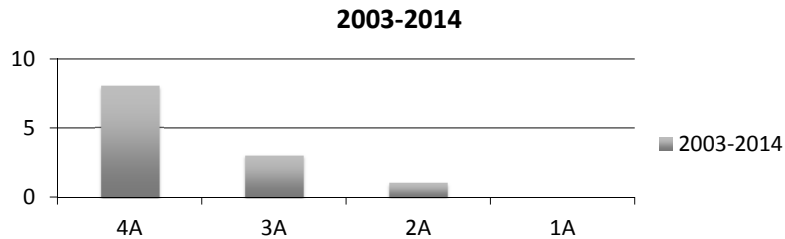
- 2014 ST X won State Title playing **18** different kids during tourney
- 2013 PRP won State Title playing **17** different kids during tourney
- 2013 Scott Co won 6A football title with **22** different kids listed as starters
- 2013 Mayfield won 1A football title with **17** different kids listed as starters
- 2014 CovCath won Basketball State Title playing **9** different kids total (only 7 significant minutes)
- 2013 Madison Central won Basketball Title playing **7** different kids total

State Champions By Class (Past 42 years)



- 4A- 22 State Titles
- 3A- 15 State Titles
- 2A- 4 State Titles (3 of those 4 were private schools)
- 1A- 1 State Title (Paintsville 1990)

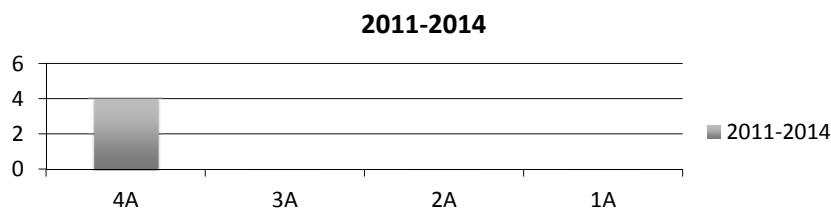
State Champions by Class (Past 12 years)



*This is from the expansion of the old Final 4 format (Elite 8 from 2003-2010 and 16 Teams 2011-2014)

- 4A- 8 State Titles
- 3A- 3 State Titles
- 2A- 1 State Title (private school)
- 1A- 0 State Titles

State Champions by Class (Past 4 years)



This chart is a reflection under the current format of 16 teams qualifying for the state tournament- having to win 4 games in a 6 day period (possibly 5 day period).

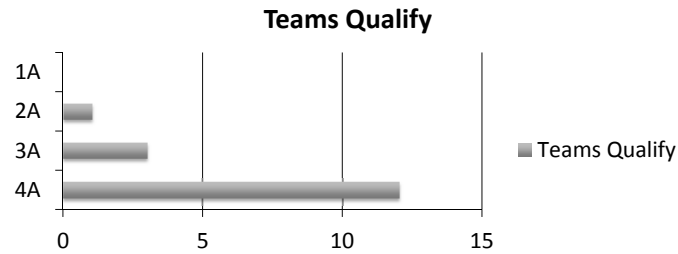
QUALIFYING TEAMS 2003- 2014

Percent of Teams Qualifying



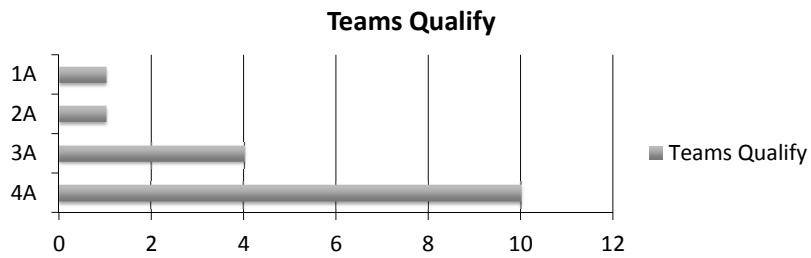
- Since the Final 4 expansion of 2003, **128** Teams have qualified for the Baseball State Tournament
- **1A** Teams Qualifying: **7**
- **2A** Teams Qualifying: **18**
- **3A/4A** Teams Qualifying: **103**
- **81 %** of Teams in State Tourney – **3A and 4A** schools
- **1A- 5%**
- **2A- 14 %**

2013 State Tourney Breakdown



- Final 4 (teams that advance)
 - 4A- 3
 - 3A- 1
 - 2A- 0
 - 1A- 0
- State Finals
 - 4A- 1
 - 3A- 1

2014 State Tourney Breakdown



- Final 4 (teams that advance)
 - 4A- 4
 - 3A- 0
 - 2A- 0
 - 1A- 0
- State Finals
 - 4A- 2

ARE WE GETTING IT RIGHT?

- 47 States Play Sanctioned High School Baseball
– South Dakota, Wyoming, and Montana Do Not
- 45 of those states classify Baseball
- Kentucky Does Not: 253 schools participated in postseason (2014)
- Delaware Does Not: 50 schools participated in postseason (2014)
- North Dakota has 69 schools that play baseball and they classify
- Hawaii classifies (travel concerns?)

Realignment every 4 years

- | | |
|-----------------------|---|
| • 1A- 63 Teams | • Consolidation |
| • 2A- 63 Teams | • New Baseball Playing Schools |
| • 3A- 63 Teams | • Enrollment Changes |
| • 4A- 64 Teams | • Schools NOT permitted to petition to play “up” in class |

Classification Plan Proposal 4 Class System (enrollment based)

District/ Region Set Up

Current Format

- 64 “Districts”
- 16 “Regions”
- Seeding/Drawing is majority vote for each Individual District (unless 3 teams)

Proposed Format

- 4 Classes
- Each Class contains **8 Regions (32 Total)**
- Each Region in Each Class contains **2 Districts (64 Total)**
- Each District **MUST** be seeded (1,2, or 3 games)
 - Should be uniform across the board

Class 1A

REGION 1 *69 miles	
DISTRICT 1	DISTRICT 2
Carlisle County	Lyon County
Fulton City	Livingston Central
Fulton County	St Mary
Hickman County	
REGION 3 *84 miles	
DISTRICT 5	DISTRICT 6
Lou Holy Cross	Ky Country Day
Bethlehem	Desales
Beth Haven	Whitefield Academy
Campbellville	
REGION 5 *78 miles	
DISTRICT 9	DISTRICT 10
Silver Grove	Robertson Co
Bracken County	Nicholas County
Bishop Brossart	Paris
Augusta	Sayre
Calvary Christian	St Patrick
REGION 7 *106 miles	
DISTRICT 13	DISTRICT 14
Jenkins	Wolfe Co
Pineville	Jackson City
June Buchanan	Buckhorn
Harlan	Owsley County
	Lee County

REGION 2 *158 miles	
DISTRICT 3	DISTRICT 4
Crittenden Co	Trinity Whitesville
Dawson Springs	Caverna
University Heights	Russellville
REGION 4 *77 miles	
DISTRICT 7	DISTRICT 8
Eminence	Bellevue
Williamstown	Dayton
Villa Madonna	Ludlow
Covington Latin	Newport Cath
REGION 6 *130 miles	
DISTRICT 11	DISTRICT 12
Williamsburg	Burgin
Cumberland County	Model
Barbourville	Frankfort
Lynn Camp	Berea
REGION 8 *122 miles	
DISTRICT 15	DISTRICT 16
Cordia	Fairview
Hazard	Raceland
Phelps	Menifee County
South Floyd	Paintville

Class 2A

REGION 1 *100 miles	
DISTRICT 1	DISTRICT 2
Ballard Memorial	Caldwell Co
Murray	Trigg County
Mayfield	Webster County
	Union County
REGION 3 *153 miles	
DISTRICT 5	DISTRICT 6
Metcalfe County	Fort Knox
Clinton Co	Shawnee
Green County	Washington County
Casey Co	Christian Academy-Louisville
	Bardstown
REGION 5 *	
DISTRICT 9	DISTRICT 10
Lloyd Memorial	Covington Holy Cross
Lewis County	Covington Catholic
Newport	St Henry
	Beechwood
REGION 7 *156 miles	
DISTRICT 13	DISTRICT 14
Middlesboro	Betsy Lane
Leslie County	Prestonsburg
Knott Central	Magoffin Co
Breathitt Co	Allen Central

REGION 2 *127 miles	
DISTRICT 3	DISTRICT 4
Owensboro Catholic	Glasgow
McLean County	Ft Campbell
Hancock County	Todd County Central
Edmonson County	Monroe County
Butler County	
REGION 4 *83 miles	
DISTRICT 7	DISTRICT 8
Henry County	Walton Verona
Owen County	Gallatin County
Lexington Christian	Trimble County
	Carroll County
REGION 6 *138 miles	
DISTRICT 11	DISTRICT 12
Fleming Co	Somerset
Bath County	Danville
West Carter	Estill Co
	Jackson Co
REGION 8 *123 miles	
DISTRICT 15	DISTRICT 16
Pikeville	Lawrence County
East Ridge	Sheldon Clark
Shelby Valley	Russell
Pike Central	Morgan County
Belfry	

Class 3A

REGION 1 *126 miles	
DISTRICT 1	DISTRICT 2
Paducah Tilghman	Hopkins Co Central
Hopkinsville	Madisonville-North Hopkins
Calloway County	Ohio Co
REGION 3 *54 miles	
DISTRICT 5	DISTRICT 6
Elizabethtown	Western
Thomas Nelson	Fairdale
Nelson Co	Doss
Larue Co	Iroquois
John Hardin	
REGION 5 *120 miles	
DISTRICT 9	DISTRICT 10
Highlands	Mason County
Holmes	Bourbon County
Pendleton County	Powell County
Scott	Harrison County
REGION 7 *149 miles	
DISTRICT 13	DISTRICT 14
Perry Central	Corbin
Clay County	Knox Central
Letcher Central	McCreary Central
Bell County	Wayne County

REGION 2 *114 miles	
DISTRICT 3	DISTRICT 4
Warren East	Russell County
Hart Co	Franklin Simpson
Warren Central	Allen County Scottsville
Breckinridge County	Adair Co
	Taylor Co
REGION 4 *51 miles	
DISTRICT 7	DISTRICT 8
Moore	Spencer County
Shelby Co	Franklin County
Waggener	Western Hills
Collins	North Oldham
REGION 6 *77miles	
DISTRICT 11	DISTRICT 12
Lexington Catholic	Boyle County
Garrard County	Marion County
East Jessamine	Lincoln County
Mercer County	Pulaski County
	Rockcastle Co
REGION 8 *72 miles	
DISTRICT 15	DISTRICT 16
Ashland	East Carter
Johnson Central	Greenup County
Boyd County	Rowan County

Class 4A

REGION 1 *152 miles	
DISTRICT 1	DISTRICT 2
Christian County	Henderson County
Graves County	Apollo
Marshall County	Daviess County
McCracken Co	Muhlenburg County
	Owensboro
REGION 3 *	
DISTRICT 5	DISTRICT 6
Fern Creek	Valley
Seneca	Southern
Jeffersontown	Butler
	PRP
REGION 5 *64 miles	
DISTRICT 9	DISTRICT 10
Anderson County	Bullit East
South Oldham	North Bullit
Oldham County	Bullit Central
REGION 7 *48 miles	
DISTRICT 13	DISTRICT 14
Woodford County	Tates Creek
Scott County	Lafayette
Bryan Station	Paul Dunbar
West Jessamine	Henry Clay
George Rogers Clark	Montgomery Co

REGION 2 *113 miles	
DISTRICT 3	DISTRICT 4
Bowling Green	Meade County
Barren County	Grayson County
Greenwood	North Hardin
South Warren	Central Hardin
Logan County	
REGION 4 *	
DISTRICT 7	DISTRICT 8
Central	Ballard
Atherton	Male
St Xavier	Dupont Manual
Trinity	Eastern
REGION 6 *	
DISTRICT 11	DISTRICT 12
Ryle	Conner
Campbell County	Dixie Heights
Cooper	Boone County
Simon Kenton	Grant County
REGION 8 *125 miles	
DISTRICT 15	DISTRICT 16
Harlan County	North Laurel
Whitley County	Madison Central
South Laurel	Madison Southern
Southwestern	

SEASON DATES

CURRENT FORMAT

- 1st Contest: March 11 (Wednesday)
- Last Contest: May 16 (Saturday)
- District Tourney Start: May 17 - Monday

PROPOSED FORMAT

- 1ST Contest: March 11 (Wednesday)
- Last Contest: May 13 (Wednesday)
- District Tourney Start: May 15 - Friday

Post Season Set Up

DISTRICT TOURNAMENT

- SINGLE ELIMINATION (except the Finals)
 - WINNER *AND* RUNNER UP ADVANCE TO REGION
3-4 Games Total / Winner = **2 wins (same as now)**
- i. May 15 (Friday) all play in games played (5 team districts)
 - ii. May 16 (Saturday) Semi Finals
 - iii. May 17 (Sunday) make up date – weather/ schedule conflicts (prom, graduations)
 - iv. May 18 (Monday) District Finals

Post Season Set Up

REGION TOURNAMENT

- 4 TEAM DOUBLE ELIMINATION -SAME AS NCAA Baseball
 - WINNER *only* Advances
6-7 Games Total / Winner = **3 wins (same as now)**
- i. May 22 –Friday (2 Games)
 - ii. May 23 --Saturday (2-3 Games)
 - iii. May 24 –Sunday (1-2 Games)
 - iv. May 25 – Monday (make up date)

Post Season Set Up SUPER REGIONS

➤ 2 Regional Winners Best 2 of 3 Series

➤ **WINNER *only* Advances**

2-3 Games Total / Winner = **2 wins**

(same as now- 1st 2 rounds state tourney)

- i. May 28 – Thursday (1 game)
- ii. May 29 -- Friday (2 games if necessary)
- iii. May 30 – Saturday make-up date

Post Season Set Up

SUPER REGIONS

Winners of Regions: (all classes)

◆ 1 vs 2

◆ 3 vs 4

◆ 5 vs 6

◆ 7 vs 8

Post Season Set Up

STATE FINAL 4 TOURNEY

- Each class has 4 Super Region Winners Advance
- Blind Draw for the 4 slots in the bracket
- Single Elimination Championship Tournament
 - 3 games per class / Winner = 2 wins (9 wins total to win state championship- same as now)

STATE FINAL 4 TOURNEY

June 3 (Wednesday) Class 1A & 3A Semifinals

4 games

June 4 (Thursday) Class 2A & 4A Semifinals

4 games

June 5 (Friday) Class 1A & 3A Finals

2 games

June 6 (Saturday) Class 2A & 4A Finals

2 games

12 Games Total At Whitaker Bank Park in 4 days

Vs

15 Games Total in 6 days (Current)

\$\$\$\$

Post Season Set Up

TOURNAMENT SITE SELECTION PLANS/ROTATIONS

District Tournament

- Same as now and similar rotation plan

Region Tournament

- Requirements should be more strict than current policies and ENFORCED
- Parking, Seating, Restrooms, Concessions, Dugouts, Lights, Playing Surface, Tarps/ Turf
- Have a rotation plan within district of teams that meet specs
- Even # years = Even # district hosts
- Odd # years = Odd # district hosts

OR

- Select Central Region Locations to Hosts to Cut Travel Concerns and Profit Share

Super Regions

- Adopt the old Semi-State Specs/Requirements
- Rotation Plan within Each Region that meet Requirements
- Even # years = Even # Region
- Odd # years = Odd # Region

Final 4 State

- Whitaker Bank Park

TOURNAMENT SITE SELECTION PLANS/ROTATIONS

MILEAGE CONCERNS

Current Format Distances

- 4th region Clinton Co – Todd Central: 138 miles
- 14th region Jenkins – Estill Co: 136 miles
- 3rd region Meade Co – Muhlenburg Co: 98 miles
- 12th region: West Jessamine –McCreary Central: 94 miles
- 8th region: Spencer Co – Simon Kenton: 93 miles
- 13th region: Jackson Co – Harlan Co: 92 miles
- 2nd region: Henderson Co – Ft Campbell: 88 miles
- 15th region: Lawrence Co – East Ridge: 88 miles

Proposed Format Distances

- 1A Region 2: Crittenden Co-Caverna 158 miles
- 2A Region 3: Clinton Co – CAL: 153 miles
- 2A Region 7: Magoffin Co – Middlesboro: 156 miles
- 3A Region 7: Letcher Co – Wayne Co: 149 miles
- 4A Region 1: Owensboro – Graves Co: 152 miles

MILEAGE CONCERNS

- Only 5 match ups within regions are greater than the longest travel now and the longest is just 20 miles more
- Many of the current formats distances can be misleading
Ex: Lawrence to East Ridge is a 2+ hour bus trip
- I have the greatest distances between schools in each region in each class and MOST are very comparable to what we currently have
- Just like now, the greatest challenges are in the far western, southeastern, south central portions of the state. These schools are most likely used to greater travel as is