



Statewide Educational

Resource on Blindness



Our Mission:

“The mission of the Kentucky School for the Blind is to provide comprehensive educational services to all Kentucky students who are blind and visually impaired, birth to 21.

Our Vision:

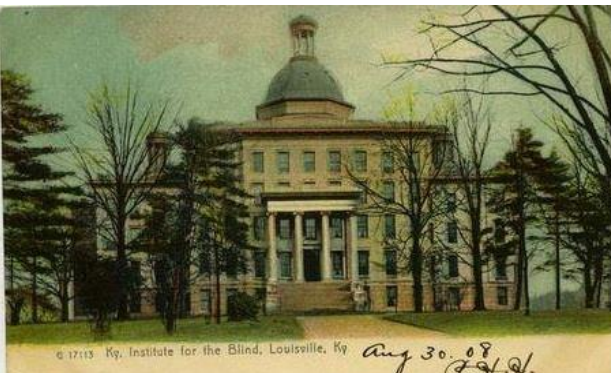
“Empowering Students who are Blind and Visually Impaired to Command their Future”



We were the third state-supported school for the blind established in the United States. The school's founder was Bryce McLellan Patten who began teaching a class of six blind students in the summer of 1839.



The photo on the top left depicts a view of the city of Louisville in 1880 from the Cupola of the Kentucky Institute for the Blind. The Cupola was restored in 1999 and is still found on campus today. The photo on the bottom left is the Kentucky Institute for the Blind taken in 1908.



We continue to help all Kentucky students who are blind and visually impaired to develop their talents, their skills and attitudes to become confident, competent, and independent adults.

KSB History

1574

Students served by KSB



Orientation and Mobility Training



Family Support



Low Vision Clinic



Summer Program



Short Term Program



Computer and Assistive Technology



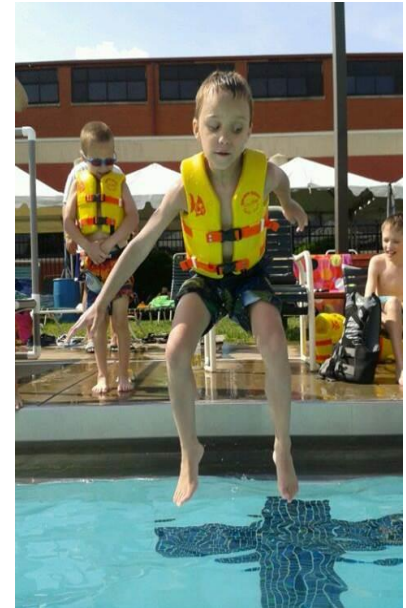
Braille



Kentucky Instructional Resource Center



Recreation and Leisure



Sports Programs



World of Work



Independent Living Program



Community Based Instruction (CBI)



KSB Outreach 2014-2015

Special Education Cooperatives

■ Western Kentucky Educational Cooperative
■ Green River Regional Educational Cooperative
■ Jefferson County Public Schools
■ Ohio Valley Educational Cooperative
■ Northern Kentucky Cooperative for Educational Services

■ Central Kentucky Educational Educational Cooperative
■ Southeast Educational Cooperative
■ Kentucky Valley Educational Cooperative
■ Kentucky Educational Development Corporation

■
Kenny Jones
 KSB Outreach Consultant KSB & JCPS
kenny.jones@ksb.kyschools.us
 (502) 897-1583 x 7109 (Office)
 (502) 609-7501 (Cell)

■
Robbin Cox
 KSB Outreach Consultant West Kentucky
robbin.cox@ksb.kyschools.us
 (270) 809-6965 (Office)
 (270) 994-3395 (Cell)

■
Wendy Strobe Ross
 KSB Outreach Consultant GRREC
wendy.strobe-ross@ksb.kyschools.us
 (270) 563-2113 (Office)
 (270) 784-3130 (Cell)

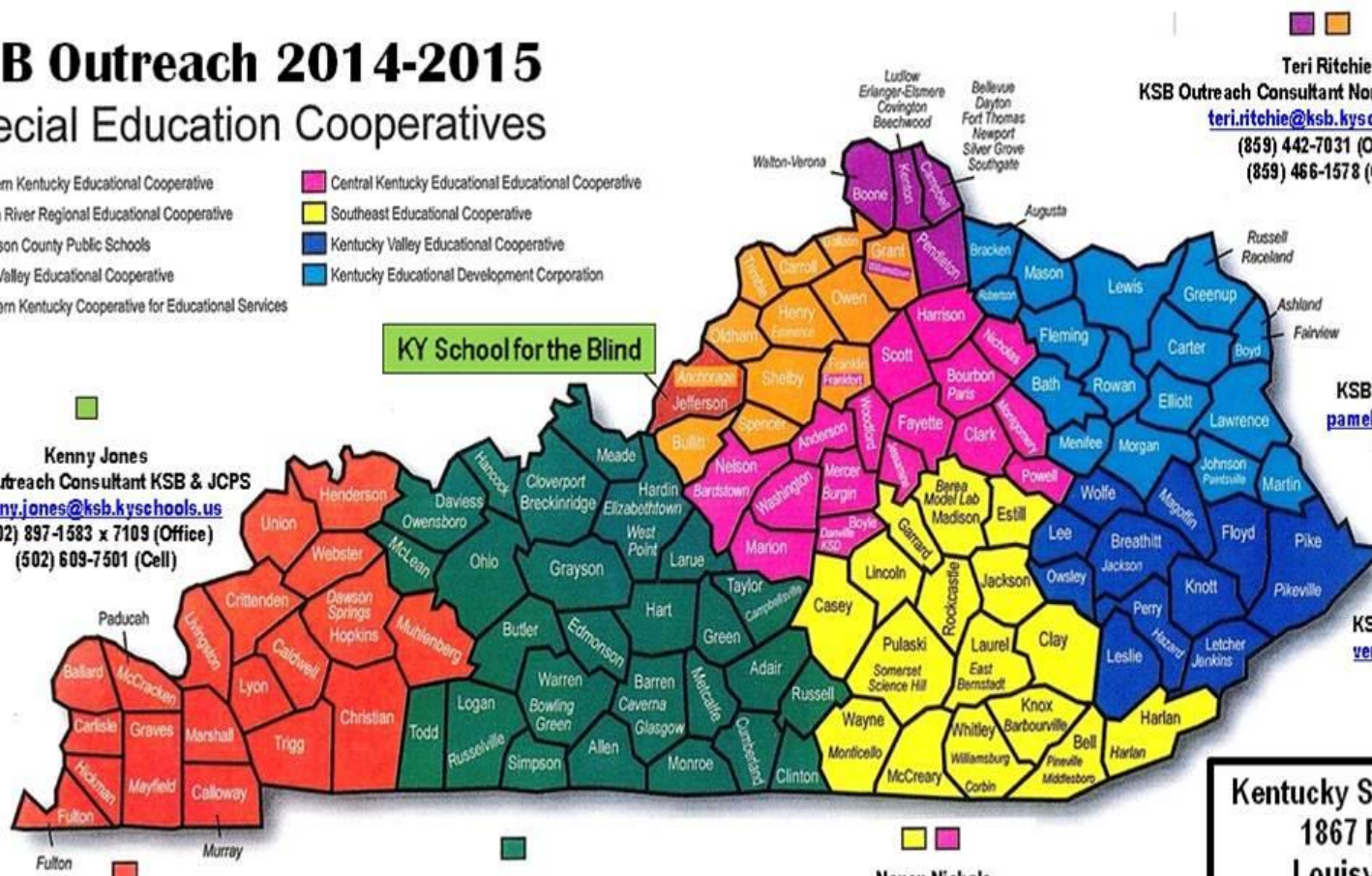
■ ■
Nancy Nichols
 KSB Outreach Consultant Central & SESC
nancy.nichols@ksb.kyschools.us
 (859) 402-8610 (Co-op)
 (606) 371-0997 (Cell)

■ ■
Teri Ritchie
 KSB Outreach Consultant Northern KY & OVEC
teri.ritchie@ksb.kyschools.us
 (859) 442-7031 (Office)
 (859) 466-1578 (Cell)

■
Pamela Howard
 KSB Outreach Consultant KEDC
pamela.howard@ksb.kyschools.us
 (606) 929-2243 (Office)
 (606) 465-5831 (Cell)

■
Verna Howell
 KSB Outreach Consultant KVEC
verna.howell@ksb.kyschools.us
 (859) 443-7031 (Office)
 (859) 466-1578 (Cell)

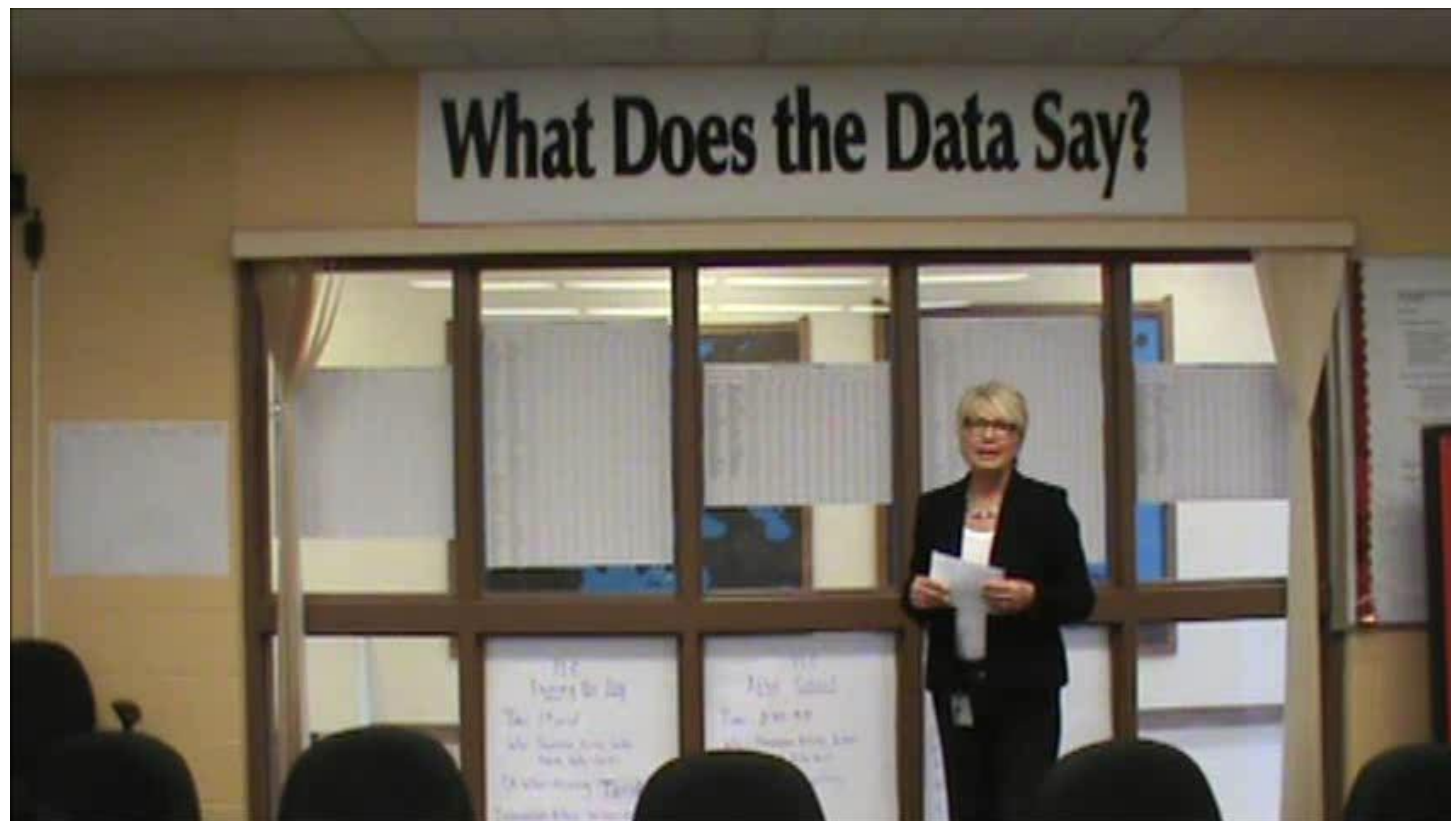
Kentucky School for the Blind
 1867 Frankfort Ave
 Louisville, KY 40206
 (502) 897-1583
 Fax: (502) 897-8737
www.ksb.kyschools.us



How will we reach proficiency?



What Does the Data Say?





Student focus on a college and career readiness path:

- Transition Class
- Community job partnerships
- College and Career Fair
- College visits
- Mentorship Programs



What else did we
do this summer?



Renovations



New dorm entrance



Building upgrades



Refinished gym



Upgraded entry way



Redesigned front office



New dorm rooms



We've been busy.
But they're worth it!





Kentucky School for the Deaf

Presentation

***“Learning is the currency
that buys freedom.”***

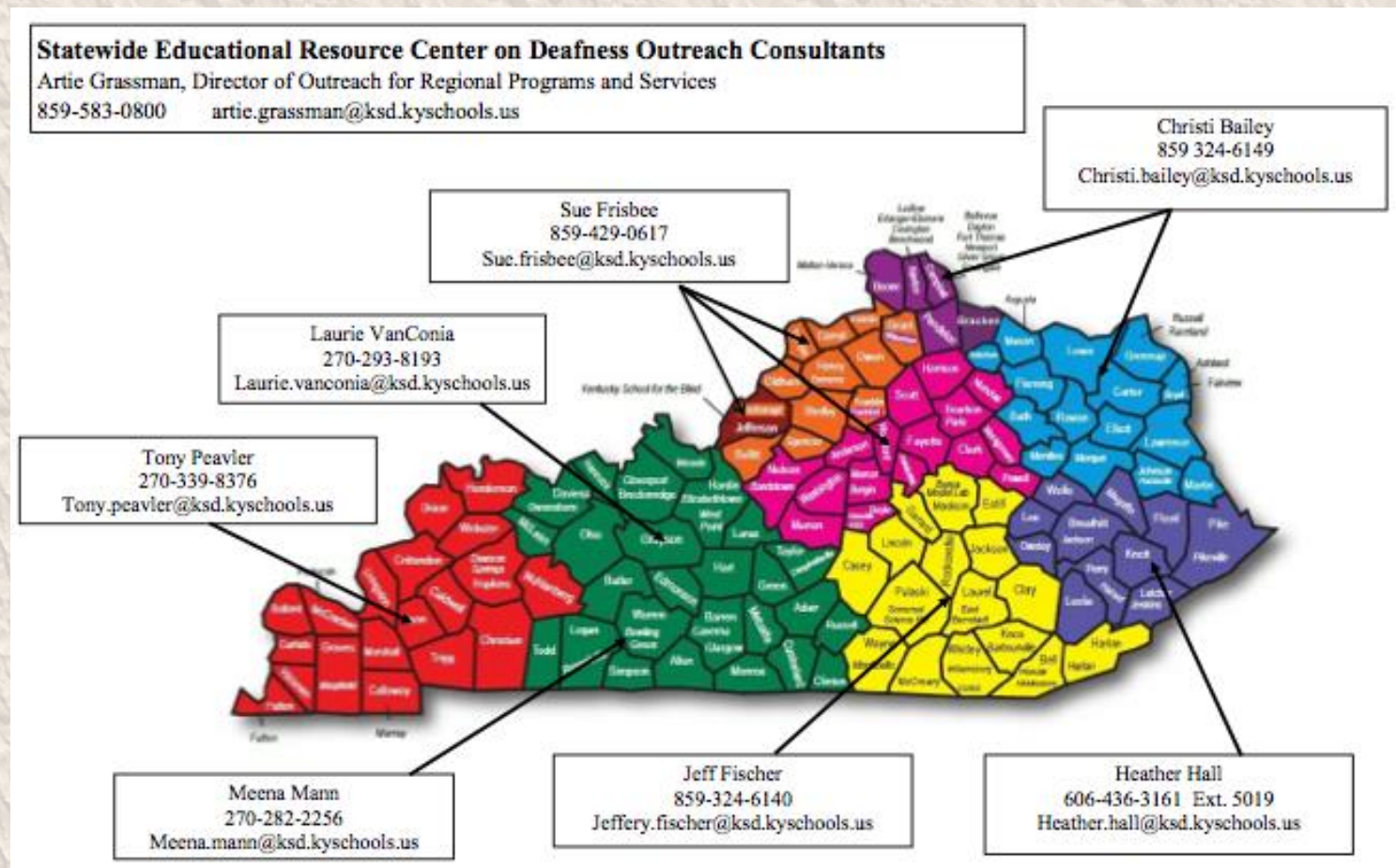
Why do we exist?

Our mission is to ensure that deaf and hard of hearing youth of Kentucky have educational opportunities to develop their potential to become educated and productive citizens.



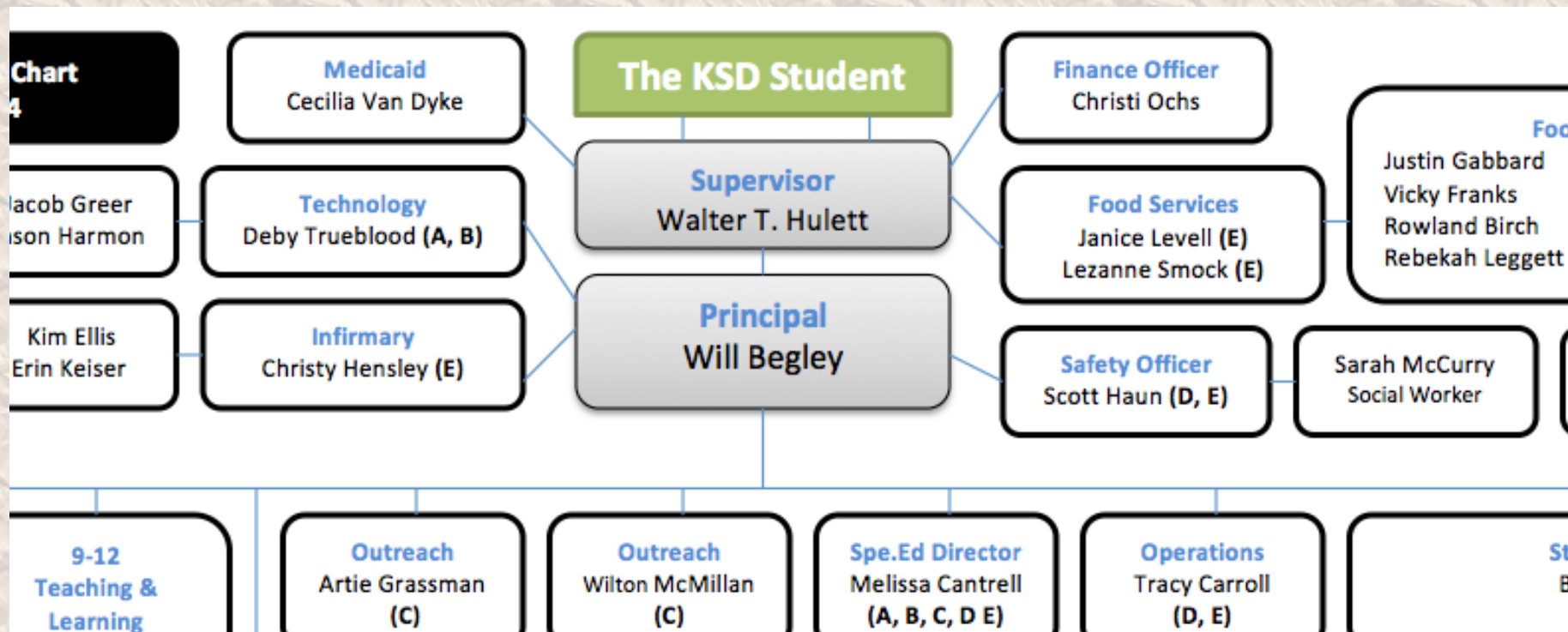
How?

Through our strong Outreach program that covers the entire Commonwealth and the Kentucky School for the Deaf, we are able to provide services that many school districts cannot provide.

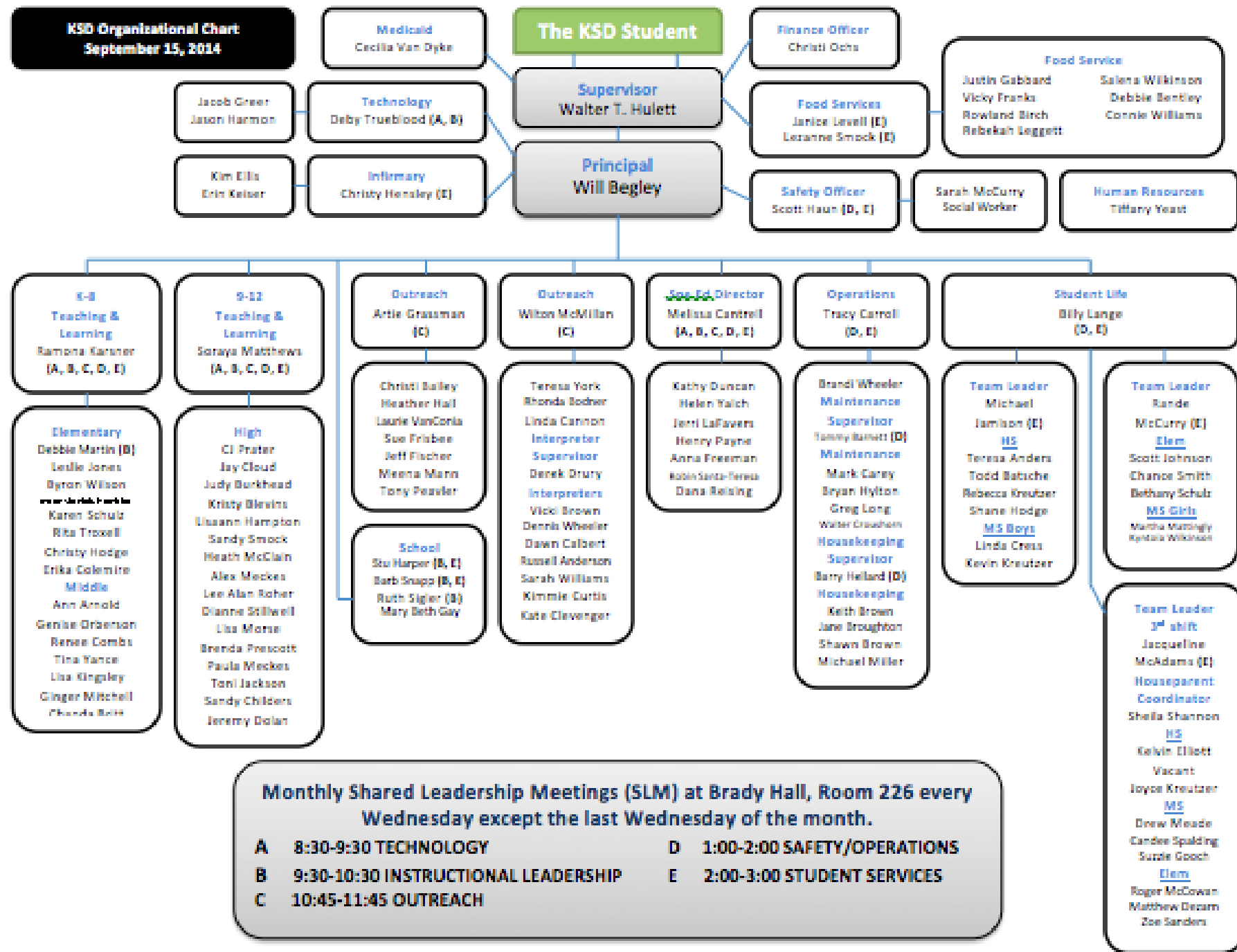


*We exist because of the “Students” and
we work for them.*

They sit atop of the KSD Organizational Chart.



KSD Organizational Chart
September 15, 2014



Shared Leadership Meetings (SLM) for Campus Staff

Sandy Childers
Jeremy Dolan

**Monthly Shared Leadership Meetings (SLM) at Brady Hall, Room 226 every
Wednesday except the last Wednesday of the month.**

A 8:30-9:30 TECHNOLOGY

D 1:00-2:00 SAFETY/OPERATIONS

B 9:30-10:30 INSTRUCTIONAL LEADERSHIP

E 2:00-3:00 STUDENT SERVICES

C 10:45-11:45 OUTREACH

Our SLM are weekly. We have set short and long-term goals. These goals feed into our School Improvement Plan.

School-Level Committee Meetings

- **Teaching & Learning Committee**
 - **Data & RTI Committee**
 - **Finance Committee**
- **Assessment Committee**

These meet once a month and feed into our weekly Shared Leadership Meetings.

Did you know?



- 35% of the Class of 2014 now attend college.
- In 2013, 2 KSD students earned a National Career Readiness Certificate (1st time in school history!).
- Dual Credit offerings exist with Gallaudet University.
- In 2013, we hosted Annual Berg-Seeger Track & Field Tournament. 15+ Deaf Schools from across the nation attended. It went so well we are hosting it again this Spring!
- We also are hosting the AG Adventure and Healthy Kids Day later this month...we will have over 400 4th graders from all across Kentucky on our campus.
 - Sponsors of this endeavor are Soil Conservation, Farm Bureau, Cattlemen's Association, and YMCA.

Did you know?



2013, Battle of the Books National Champions



Visitors to our campus & community...



Hosting AG Camp

October 22, 2014; 375 4th graders from 8 schools are using the KSD high school & Centre students will serve as volunteers.

Hosting Annual Berg-Seeger Track & Field Tournament

Spring 2015; 15+ Deaf Schools from across the nation will attend.

Hosting Gallaudet Academic Bowl Midwest Regional

Feb 19-22, 2015; Deaf schools from all over the Midwest will be in attendance.

http://www.gallaudet.edu/academic_bowl.html

Pool

Will be ready in 6-9 months after finance receives the bids. It should be open within the next year. The local schools will benefit for various reasons.

FFA Corn Festival

(Click on video)

Other

We offer ASL Classes and other community events such as the Christmas Tea, Pancake Day, etc. that the community can support and enjoy.



We have...

- Renovated areas of our campus such as replacing and adding more outdoor lighting to our walkways



We have...



- Purchased new furniture for our dorms & schools



We have...

21st Century Technology

- every high school classroom has 2 PCs
- every HS student has a laptop
- Smart Boards appear in every classroom & dorms
- Video Conferencing equipment
- iMac Lab for middle/high school
- Computer stations in the dorms



We have...

Services

- K-12 Teaching & Learning
- Visual Phonics teaching
- Audiology
- Occupational Therapy
- Speech & Language
- Vocational
- Individualized instruction
- ACT Prep classes



We have...

- Increased rigor in the classrooms tied to the Common Core and Quality Core Standards
- Incorporated the “Ideal Lesson” format
 - Learning Target Posted
 - Bell Ringer/Flashback
 - Anticipatory Set
 - “Chunk” lessons
 - Return to Learning Target
 - Formative Assessment/Exit Slip



We have...



- Hired a National Board Certified teacher for English
- Hired a Math teacher with a doctorate in education
- We now no longer have to rely on area schools to help us with mainstreaming. They both teach upper level classes.
- We are currently working with Gallaudet University in Washington, DC to set up a dual credit college Algebra class.
- We will survey our students this fall on their class interest and the students will do arena scheduling in the spring.

We have...

Better way of tracking our students individually:

Last Name	First Name	Career Met	College Met	English (18)	Math (19)	Reading (20)	Compass Reading (85)	Compass English (74)	Compass Math (36)	KYOTE Math (22)	ASVAB (50)	WorkKeys	Specific Certificate	Bonus	Math Intervention	English Intervention	Score	
Doe	Jane	0	1	18	19	20	85	75	36	22	51			0			1	
Smith	John	1	1	17	18	21	87	74	36	24	50		Welding Cert	0.5			1.5	
		0	0											0			0	
		0	0											0			0	
		0	0											0			0	
		0	0											0			0	
Totals		0	0											0			2.5	
2013-2014 College & Career Readiness % as of				9/15/14												125%		
Number of Students		2																
ctrl + r to sort																		

* CCR Spreadsheet for our seniors (see above). This creates a “live” CCR rate for the senior class.

* Data Room created by our school-level Data/RTI Committee. It will be complete with every student at KSD posted on the wall as a visual representation of student scores. This will show growth in subject areas over time. Assessments like MAP, PLAN, ACT, KOSSA, KPREP, SLPI, KENDALL Writing Assessment, etc. also will be part of this tracking.

* Individual student binders completed with baseline data from year to year.

In conclusion...

...we have protected instructional time for our students at KSD.

- The 'KSD Ideal Lesson' format has been incorporated that is structured for the teacher to teach bell to bell.
- All field trips are approved by the Instructional Leadership Committee.
- 2 instructional days have been added to the KSD school calendar.

Embracing our mission, empowering our teachers in the decision making and tracking the growth of our students will help us move the needle at KSD!