

Cabinet: 4' x 8'
Mount: Pedestal

Cabinet Color: Blue
Face Color: Gradient (0 51 153,0 102 204,65)
Line Color: Gold

Outline Color: Black
Fonts: Opificio, Trebuchet(b)
Logos: b1pr0002, bear, bear3



stewart signs

America's Premier Sign Company

1-800-237-3928 WWW.STEWARTSIGNS.COM

ORIGINAL DESIGN DO NOT DUPLICATE

DUE TO THE PHYSICAL LIMITATIONS OF THE PAPER AND INK-BASED PRINTING PROCESS THIS CUSTOM ARTWORK IS NOT INTENDED TO PROVIDE AN EXACT MATCH BETWEEN INK, VINYL, PAINT, OR LED COLOR. ARTIST'S RENDITION OF BRICKWORK, MASONRY AND LANDSCAPING IS NOT INCLUDED IN THE PROPOSAL. ALL MEASUREMENTS SHOWN ARE APPROXIMATIONS; DIMENSIONS OF FINAL PRODUCT MAY VARY.

APPROVED AS SHOWN.

X _____ DATE _____ 1. _____

APPROVED WITH LISTED CHANGES.

X _____ DATE _____ 2. _____

3. _____

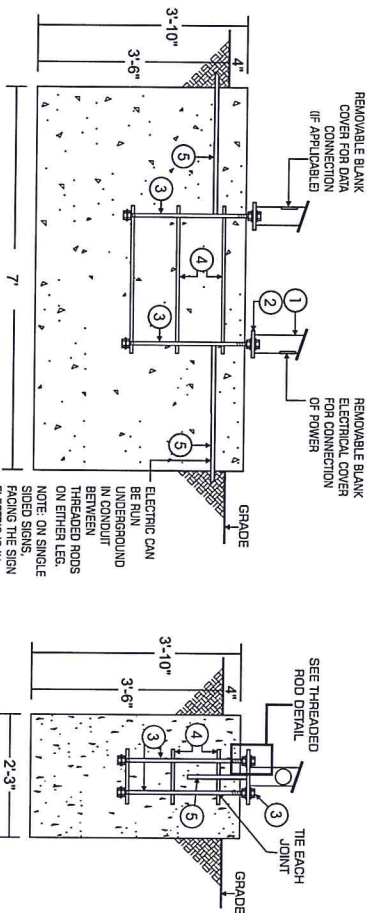
Sketch #170184 Customer #1679025
8/8/2014 Alex Dix -PROPOSAL-

FOOTING DETAIL

MODEL: TekStar 48

Leg Height: 3'-1" to 4' Leg Width: 2'-8" with Cowling

Wind Load: 120 mph



FOOTER DETAIL

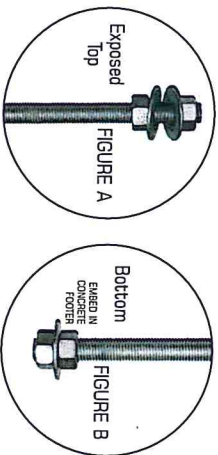
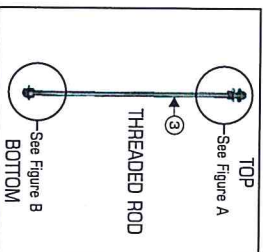
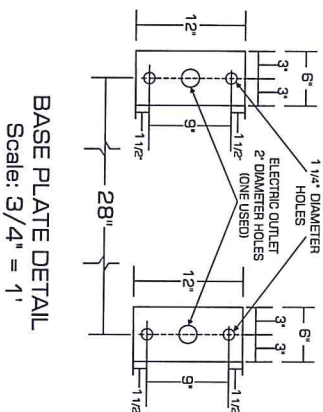
1. SIGN LEG: 4" x 4" x 1/8" STEEL TUBE
2. BASE PLATE (WELDED TO LEG AT FACTORY)
3. 3/4" x 30" THREADED RODS, 4 REQUIRED, TAPE THE EXPOSED TOP OF THE THREADED ROD FOR PROTECTION AGAINST CONCRETE.
4. #5 REBAR OR BETTER, TIED AT EACH JOINT (SUPPLIED BY CUSTOMER)
5. CONDUIT (SUPPLIED BY CUSTOMER)

NOTES

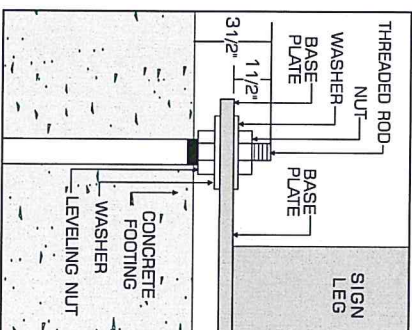
SIGNS SHALL BE GROUNDED BY CONNECTION TO THE EQUIPMENT GROUNDING CONDUCTOR OF THE SUPPLY BRANCH CIRCUIT.

FOOTER SPECIFICATIONS

- PROVIDE 1 HOLE 3'-6" DEEP x 7' LONG x 2'-3" WIDE
- LESS THAN 2.25 CUBIC YARDS OF 3,000 PSI CONCRETE NECESSARY



THREADED ROD DETAIL



J.M.S. TEMPLATE MUST BE USED TO SET THREADED RODS INTO CONCRETE



Date: 2-20-14 Drawing #: #FTKST-48-VC 31 to 41 Sketch #: Customer #: Customer Name: Customer Address: