



SITE SELECTION FOR SCHOOLS OF INNOVATION

Board Work Session – September 8, 2014



AGENDA

- Review Purpose
- Outline Criteria for Site Selection
- Propose Locations
- Discuss Next Steps



PURPOSE

Identify possible locations for the two approved School of Innovation Designs:

- Catalpa School
- Louisville Reach Academy



CRITERIA CATALPA

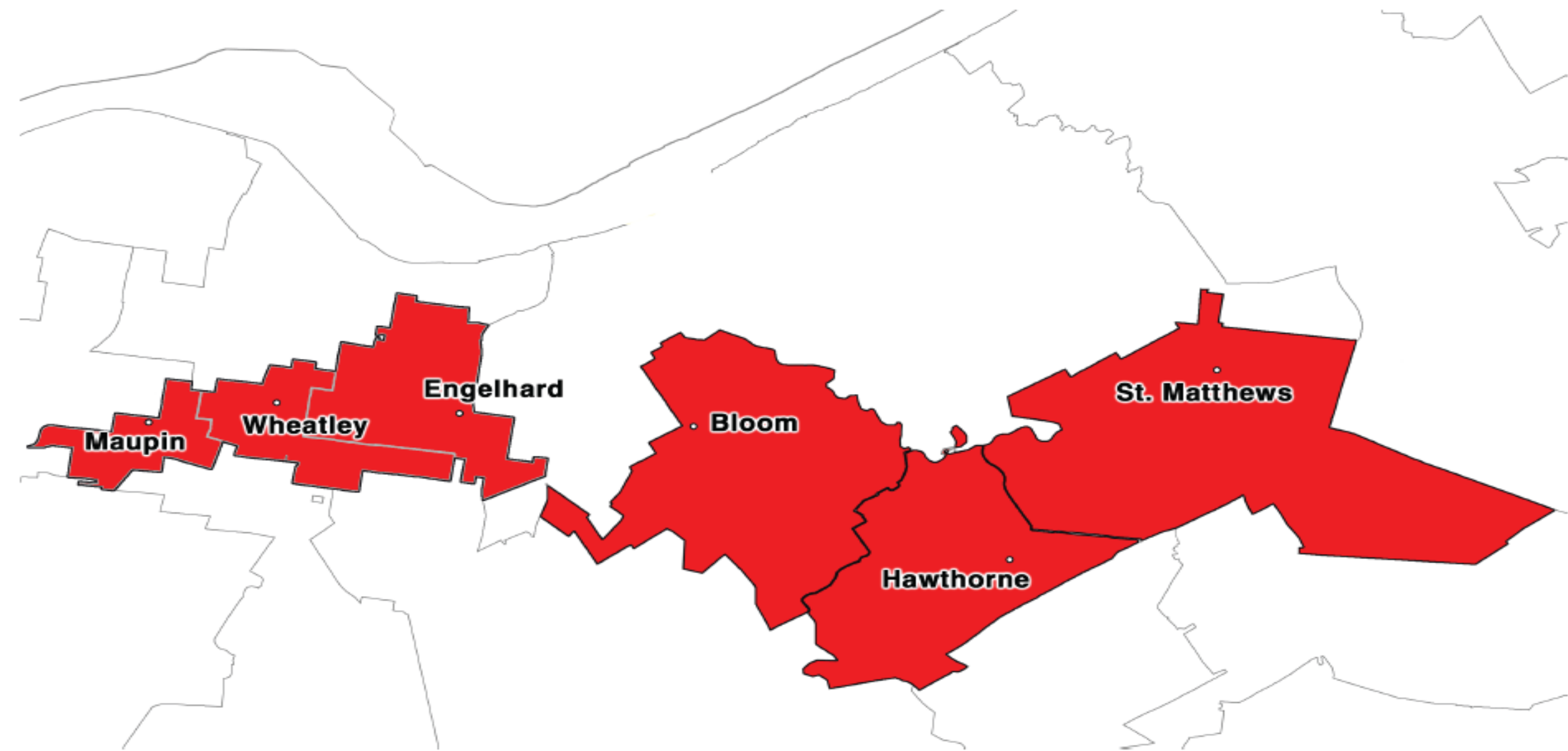
- Adequate space to expand to P-8th grades
- Serves high needs population (70% resides, 30% magnet)
- Available district-wide transportation for magnet program
- Appropriate indoor and outdoor space for programmatic needs (i.e. playground(s), sensory room, etc.)

PROPOSED LOCATION CATALPA

- Proposed Location: **Maupin Elementary**
- ✓ Adequate space to expand to P-8th grades: 675 capacity
- ✓ Serves high needs population: 90.5% FRL students
- ✓ Currently has early childhood classrooms
- ✓ *Existing* district-wide transportation for magnet program
- ✓ Appropriate indoor and outdoor space for programmatic needs (may need some adjustments as middle school grades phase in)
- ✓ Other desirables:
 - ✓ Included in District of Innovation application
 - ✓ Located on Catalpa Street



Maupin Elementary





CRITERIA LOUISVILLE REACH ACADEMY

- Adequate space to expand to K-8th grades
- Serves high needs population within resides area
- Close proximity to community partners
- Appropriate space for programmatic needs

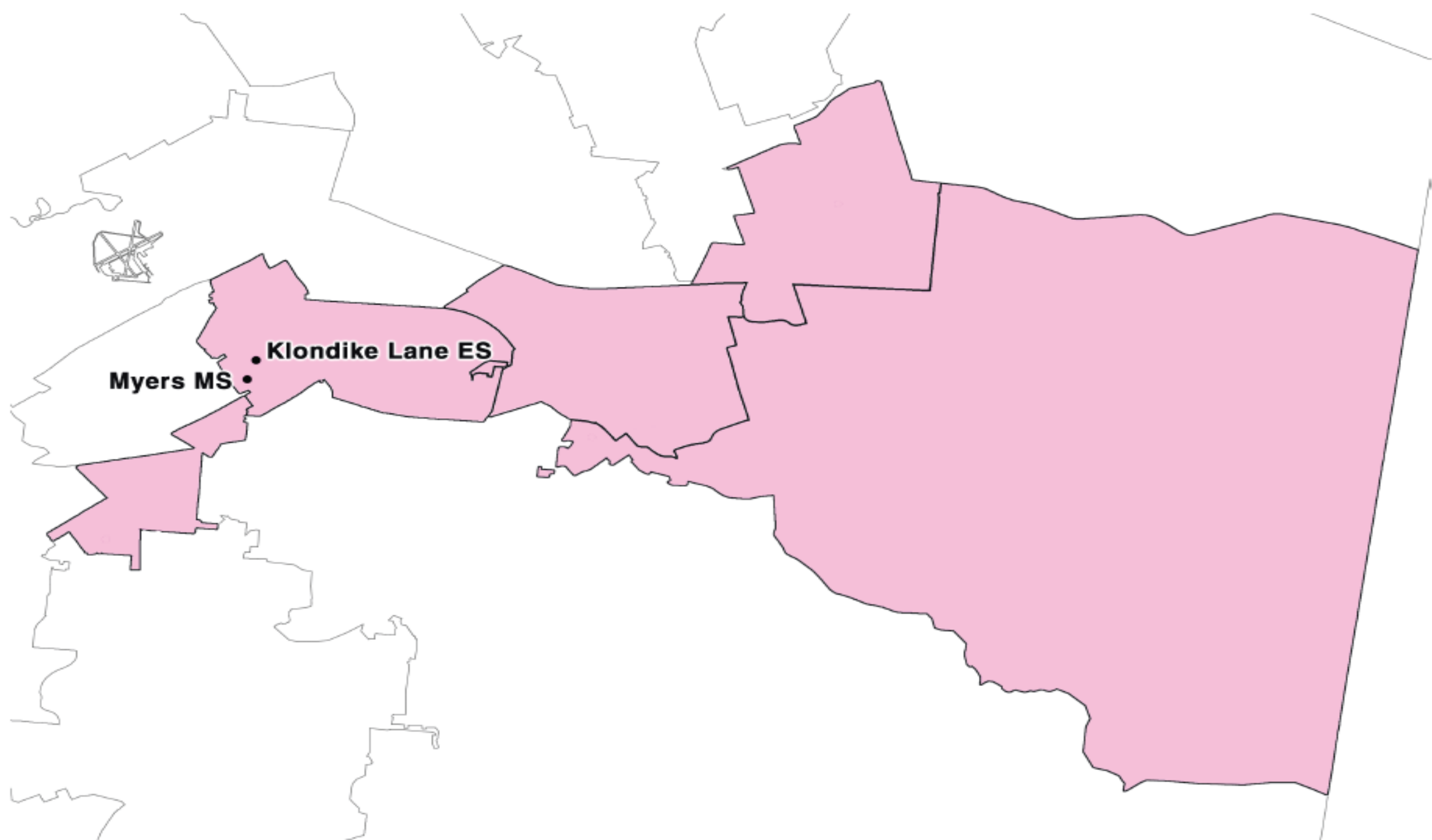
PROPOSED LOCATION

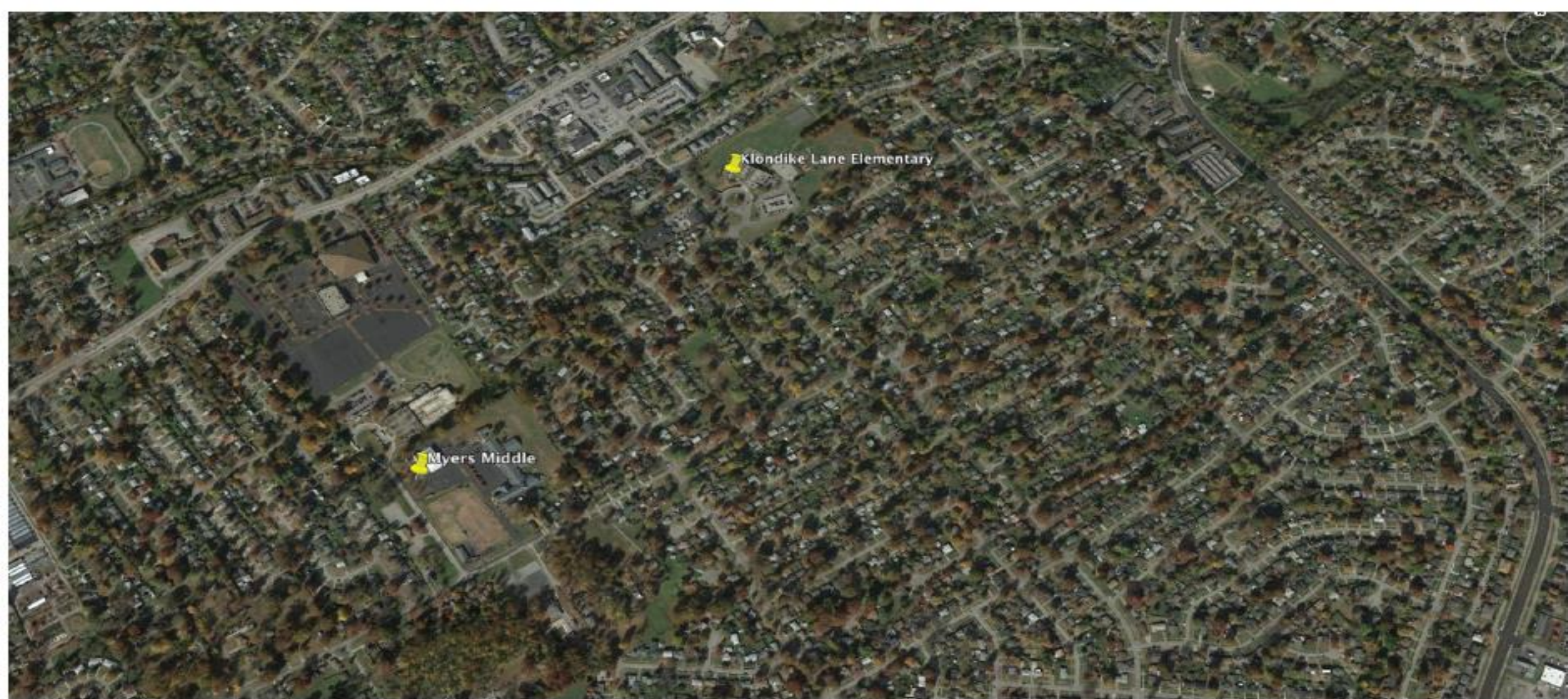
LOUISVILLE REACH ACADEMY

Proposed Location: **Klondike Elementary @ Former Myers Building**

Phoenix School of Discovery and Early Childhood Units would move to the Klondike Lane building

- ✓ Adequate space to expand to K-8th grades: 1010 program capacity
- ✓ Serves high needs population within resides area: 75-80% FRL students
- ✓ Close proximity to community partners – centrally located in the county
- ✓ Appropriate space for programmatic needs
- ✓ Other desirables:
 - ✓ REACH Team members currently at Klondike
 - ✓ Current Klondike principal has expressed support
 - ✓ Location within zip codes suggested by design team





Klondike Lane Elementary/
Myers Middle

NEXT STEPS

Create cross functional taskforce to move forward on logistics:

- Meet with stakeholders (design teams and proposed schools)
- Develop staffing protocols
- Finalize programmatic needs and associated costs given proposed locations
- Develop a time task calendar for August 2015 start date
- Adjust boundary to include Myers location in Klondike resides

Bring formal recommendation to board for approval at September 22nd meeting