



## FIELD REPORT: Architect's Observation Report # 3

|                              |                               |
|------------------------------|-------------------------------|
| <b>Prepared by:</b>          | Chuck Trimble                 |
| <b>Company:</b>              | Murphy + Graves Trimble, PLLC |
| <b>Project:</b>              | GC Burkhead Elementary School |
| <b>Location:</b>             | Job Site                      |
| <b>Arch. Project Number:</b> | 1264                          |
| <b>Date/Time:</b>            | Thu, July 31 2014             |
| <b>Weather:</b>              | Sunny approx.. 85deg.         |

|                                                              |                                                                                                                                                                                                                                                                                                                                                                                                                                                                                                                                                                                                                                                                                                                                                                                                                                                                           |                                                                         |
|--------------------------------------------------------------|---------------------------------------------------------------------------------------------------------------------------------------------------------------------------------------------------------------------------------------------------------------------------------------------------------------------------------------------------------------------------------------------------------------------------------------------------------------------------------------------------------------------------------------------------------------------------------------------------------------------------------------------------------------------------------------------------------------------------------------------------------------------------------------------------------------------------------------------------------------------------|-------------------------------------------------------------------------|
| <b><u>Parties Present</u></b><br>Chuck Trimble<br>Sam Gibson | <b><u>Organization</u></b><br>M+G+T<br>DW Wilburn                                                                                                                                                                                                                                                                                                                                                                                                                                                                                                                                                                                                                                                                                                                                                                                                                         | <b><u>Email Address</u></b><br>Chuck@mgtky.com.<br>sgibson@dwilburn.com |
| <b>Action Items:</b>                                         | <b>Due Date:</b> 08/08/2014 <b>Responsible Party:</b> Sam Gibson<br>Silt removal and repair on adjacent property<br><b>Due Date:</b> 08/08/2014 <b>Responsible Party:</b> Sam Gibson<br>Silt Fence needs to reviewed and where the fence has been compromised<br><b>Due Date:</b> 08/08/2014 <b>Responsible Party:</b> Sam Gibson<br>Stone is to be placed at the outlet of the Headwalls that have been placed                                                                                                                                                                                                                                                                                                                                                                                                                                                           |                                                                         |
| <b>General Observation</b>                                   | <ul style="list-style-type: none"> <li>• See photos for the stored materials on site</li> <li>• Trusses are being delivered and stored on site</li> <li>• Bar joist for the interior corridor platforms are being stored onsite</li> <li>• Door Frames are stored on the slab and covered with plastic</li> <li>• Geothermal piping is being stored on site</li> <li>• Repair work required to the fence at the rear of the property</li> <li>• Concrete Storm Headwalls are being stored on site</li> </ul>                                                                                                                                                                                                                                                                                                                                                              |                                                                         |
| <b>Work in Progress</b>                                      | <ul style="list-style-type: none"> <li>• Concrete slab placement is continuing</li> <li>• Foundations are being excavated for exterior retaining walls along property lines</li> <li>• Concrete block is continuing in load bearing locations of the project.</li> <li>• Bar joist are being installed for the mechanical platform over the corridor areas of the building</li> <li>• Geothermal wells have started drilling procedures for the project.</li> <li>• Storm drainage piping and headwalls are being installed on the project site</li> <li>• Sewer Line has been installed to the rear of the property</li> <li>• Interior Foundations are continuing in classroom wing</li> <li>• Base coat of asphalt paving has been placed on the drive and upper parking levels</li> <li>• Roof trusses have started to be installed on the classroom wing.</li> </ul> |                                                                         |



MURPHY • GRAVES • TRIMBLE, PLLC  
ARCHITECTURE | PLANNING | INTERIORS









MURPHY • GRAVES • TRIMBLE, PLLC  
ARCHITECTURE | PLANNING | INTERIORS







MURPHY • GRAVES • TRIMBLE, PLLC  
ARCHITECTURE | PLANNING | INTERIORS



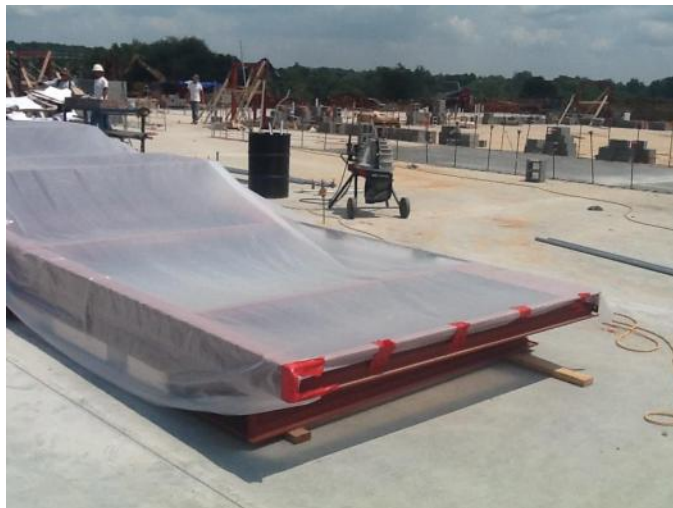


MURPHY • GRAVES • TRIMBLE, PLLC  
ARCHITECTURE | PLANNING | INTERIORS













MURPHY • GRAVES • TRIMBLE, PLLC  
ARCHITECTURE | PLANNING | INTERIORS





MURPHY • GRAVES • TRIMBLE, PLLC  
ARCHITECTURE | PLANNING | INTERIORS









MURPHY • GRAVES • TRIMBLE, PLLC  
ARCHITECTURE | PLANNING | INTERIORS







MURPHY • GRAVES • TRIMBLE, PLLC  
ARCHITECTURE | PLANNING | INTERIORS





MURPHY • GRAVES • TRIMBLE, PLLC  
ARCHITECTURE | PLANNING | INTERIORS







MURPHY • GRAVES • TRIMBLE, PLLC  
ARCHITECTURE | PLANNING | INTERIORS











MURPHY • GRAVES • TRIMBLE, PLLC  
ARCHITECTURE | PLANNING | INTERIORS







MURPHY • GRAVES • TRIMBLE, PLLC  
ARCHITECTURE | PLANNING | INTERIORS

