



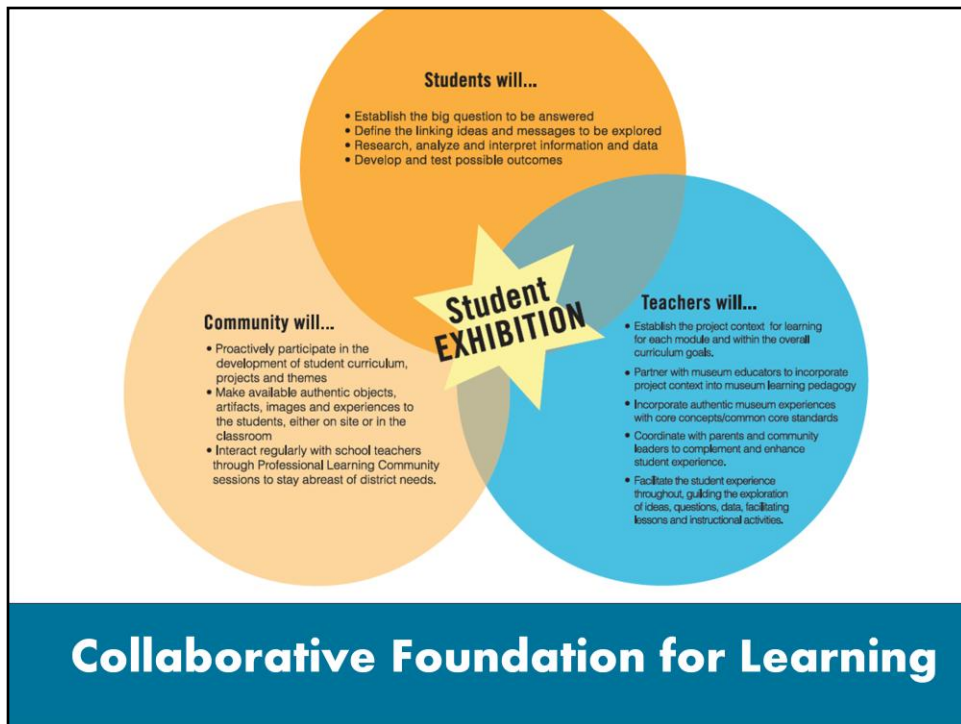
BIG IDEA: Introductions ;

The Metro Museum school is an innovative partnership between JCPS and world-class cultural institutions in the Louisville area.

## AUTHENTIC



BIG IDEA: Access to authentic objects, ideas, processes, phenomenon, and museum professionals are at the heart of this school.



BIG IDEA: From design of curriculum to sustained student experience - students, teachers, administrators, cultural and business partners, along families form a strong foundation for learning.

# MUSEUM SCHOOL MOVEMENT



**BIG IDEA:** This idea is tied to a growing museum school movement across the country;

A museum school in this district can put JCPS at the forefront of this movement by leading best practices



## **MUSEUMS ARE SKILLED SCHOOL PARTNERS**

BIG IDEA: Museums are skilled school partners through already demonstrated and expansive scope of work with area schools over decades

## FOUNDATION IN FUNDAMENTALS



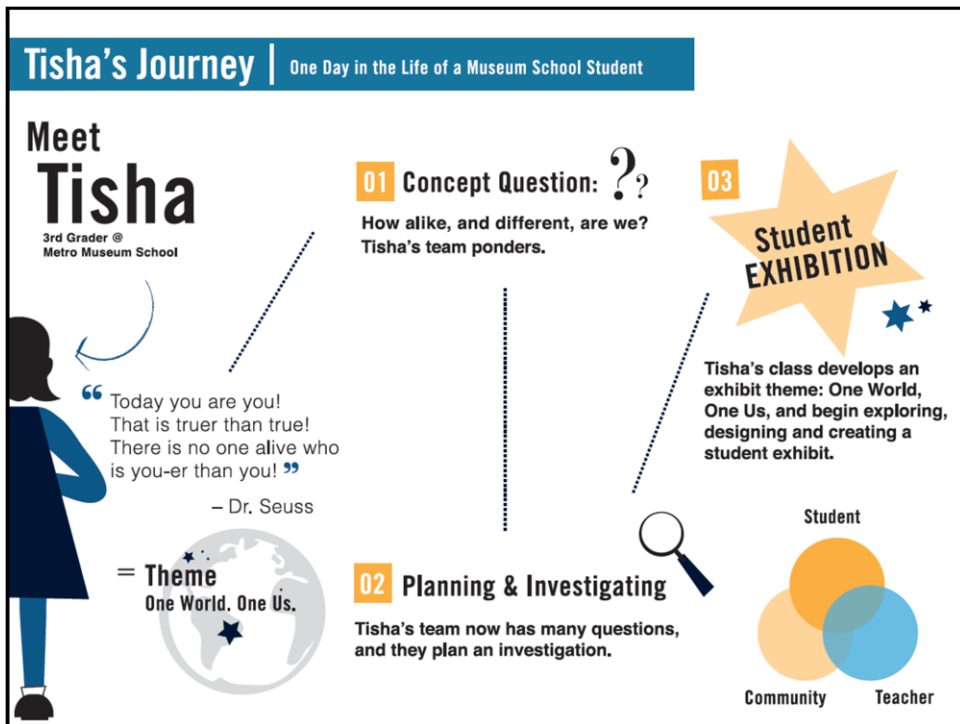
BIG IDEA: Students gain exceptional foundation in fundamentals (math, science, language arts, history, ethics, arts) through relevant and personal experiences based on museum learning model



## ANALYZE AND SYTHESIZE

BIG IDEA: Students analyze primary source materials, synthesize findings, reflect and work independently and together to frame and communicate knowledge gained. Learning is real, learning is purposeful, learning is shared.





BIG IDEA: This school experience is not one big continuous field trip; Authentic museum objects and ideas spark, add meaning and sustain student's learning journeys – like Tisha's, a 3<sup>rd</sup> grader at Metro Museum School.....





**BIG IDEA:** Our curriculum meets educational standards and is designed in a highly coordinated annual process that involves school faculty and museum education professionals.

## 21<sup>ST</sup> CENTURY SKILLS



BIG IDEA: Students gain an array of 21<sup>st</sup> century learning skills (i.e. problem solving, organizing, critical thinking, resource identification, communication, creating, awareness of self and others)



BIG IDEA: Students are assessed on those developmentally appropriate skills along with grade specific academic benchmarks.



BIG IDEA: Professional learning community involves teachers and community collaborators, thinking and working together. The intent is to get educators involved and inspired by celebrating and modeling lifelong learning.

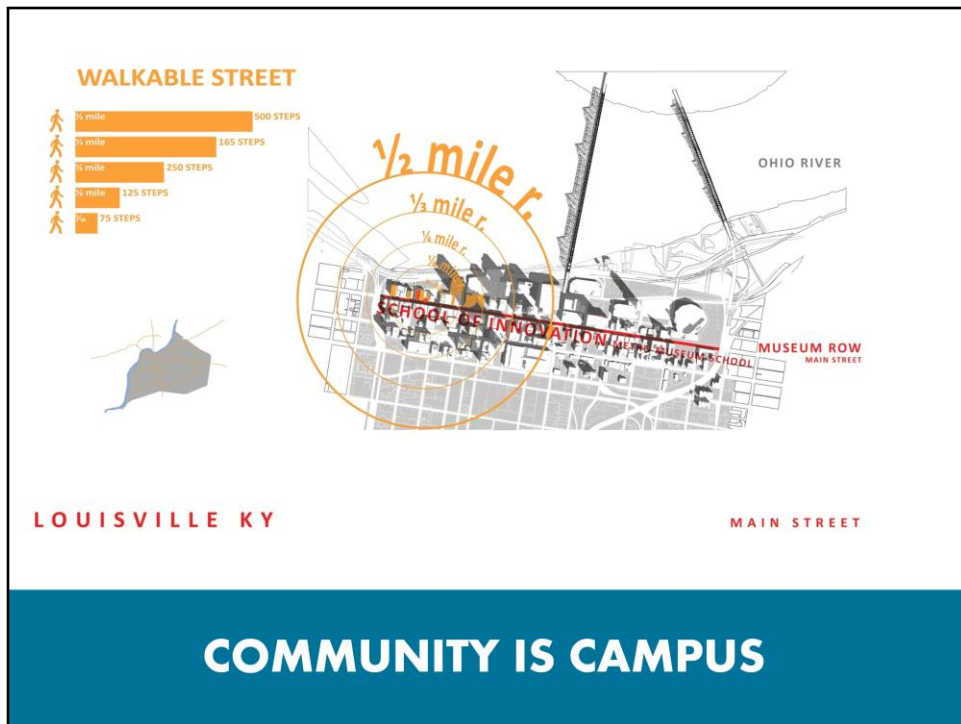
## LEARNING PERSONAL & REAL



BIG IDEA: Students, too, score higher and are more likely to graduate from college with ownership in their own learning – when learning feels personal and real.

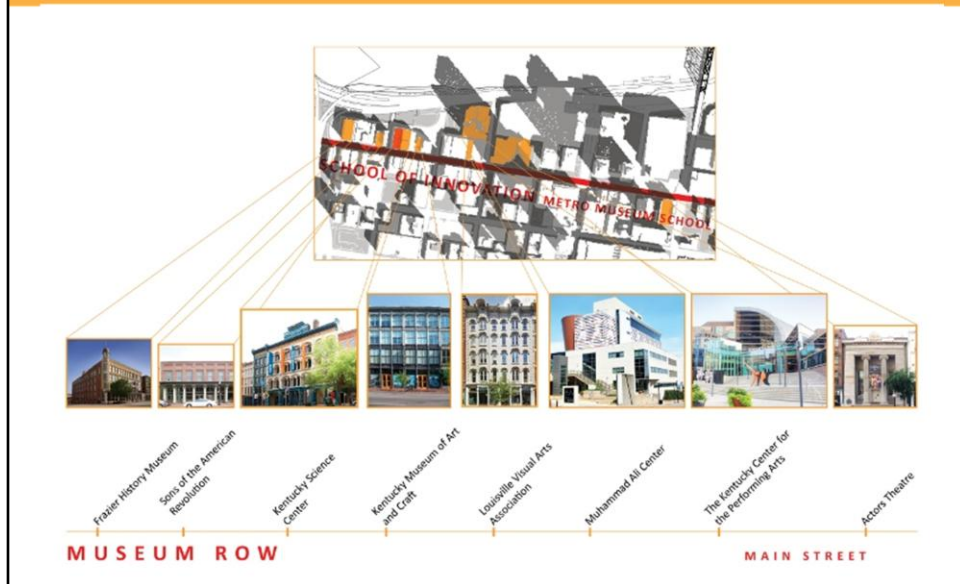
Detailed Script: XXXXX





BIG IDEA: Community is campus – classrooms extend into area museums and businesses; learning permeates the city

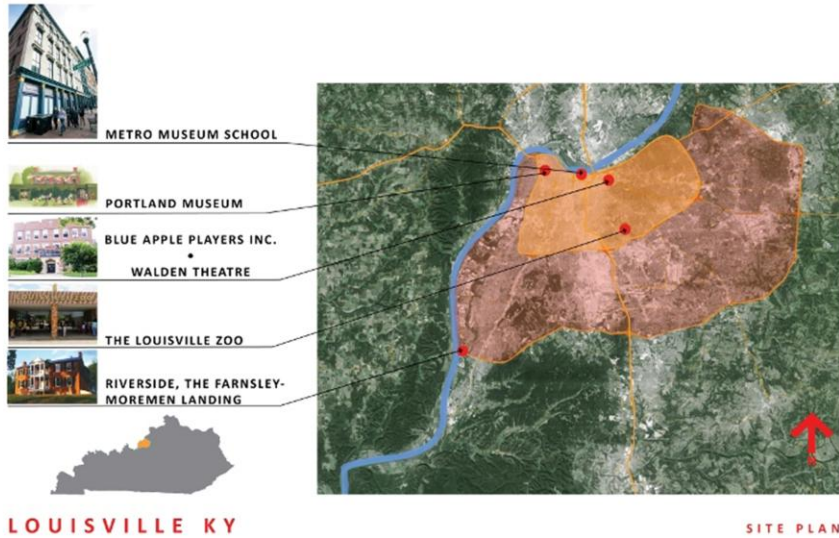
## WORLD-CLASS CULTURAL PARTNERS



BIG IDEA: At present 13 cultural institutions – many located along Main Street in downtown – have aligned with this project.



## NEAR...AND ALSO NEAR



BIG IDEA: Even institutions not on Main Street or downtown are short bus ride away.





## KIDS WILL THRIVE

BIG IDEA: Kids will thrive, love learning here and leave with an amazing connection to this city; Students who attend this school will believe themselves to be great thinkers and lifelong learners. They will leave the school with a lifelong connection to community and the world.

## UNIQUELY LOUISVILLE



BIG IDEA: No where else in this universe does the depth of collaboration or the proximity exist;  
Unprecedented number of committed cultural partners + unparalleled proximity;  
Perfect ingredients for successful school that can be unique on a national level