



# SPP&G Review Process

JEFFERSON COUNTY BOARD OF EDUCATION

MAY 12, 2014

# Review Process for 2014-15



- ▶ **Initial meeting to develop timeline for SPP&G revisions**
- ▶ **Organized broad based team**
  - ▶ ETCs, Directors, Curriculum Specialists, Counselors, Computer Education/Trainers
  - ▶ JCTA Members
    - ▶ Tammy Berlin
    - ▶ Diane Redmond
    - ▶ Beverly Chester Burton



# SPP&G Core Work Team



Met to review and revise all SPP&G Handbooks for 2014-15

Feb. 3<sup>rd</sup>, 2:30 – 4:30 pm

Feb. 10<sup>th</sup>, 2:30 – 4:30 pm

Feb. 17<sup>th</sup>, 2:30 – 4:30 pm

# Key Areas of Focus



**Review  
Categories  
and  
Components  
of Academic  
Grading**

**Include new  
board policies**

**Review  
Grading Scale**

**Discuss  
possible pilots  
for Standards  
Based Grading**

**Rollout for  
2014-15  
SPP&Gs**

- Communication and training for principals

# Review of Grading Scale



## Review of Surrounding Districts

- **10 pt. Scale (90-100)**  
Bullitt Co., Oldham Co., Fayette Co.
- **93-100**  
Shelby County
- **95-108**  
Elizabethtown Independent

# Surveyed Various Role Groups



Teachers (JCTA/Brent McKim)

Principals

Assistant Principals

Counselors

Goal Clarity Coaches

District Administrators

# Survey Question



The current explanation of academic grades as outlined in the SPP&G (board policy) is as follows:

A	(Above Standards with Exceptional Performance)	93-100%
B	(Above Standards)	86-92%
C	(Meets Standards)	79-85%
D	(Marginally Meets Standards)	70-78%
U	(Below Standards)	Below 70%

Would you like to see the grading scale change as follows:

A	(Above Standards with Exceptional Performance)	90-100%
B	(Above Standards)	80-89%
C	(Meets Standards)	70-79%
D	(Marginally Meets Standards)	60-69%
U	(Below Standards)	Below 60%

Yes or No



# Number Participating



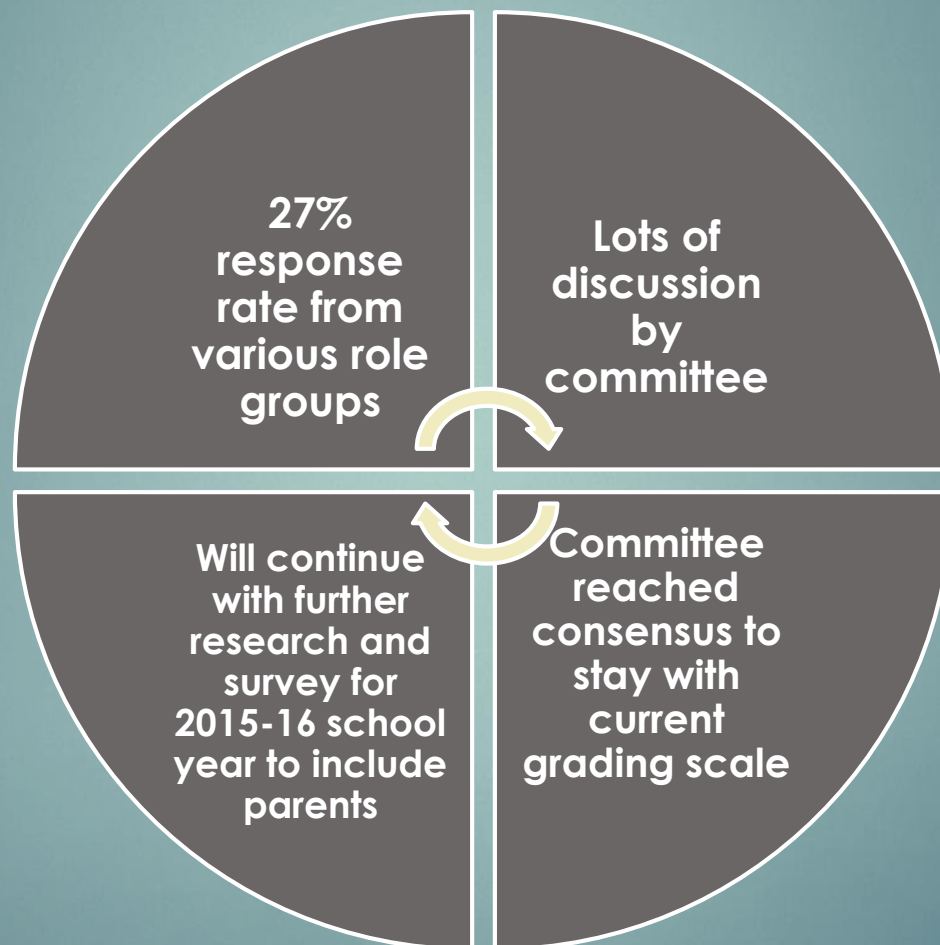
**27%  
Response  
Rate**

Number Participating per Role Group

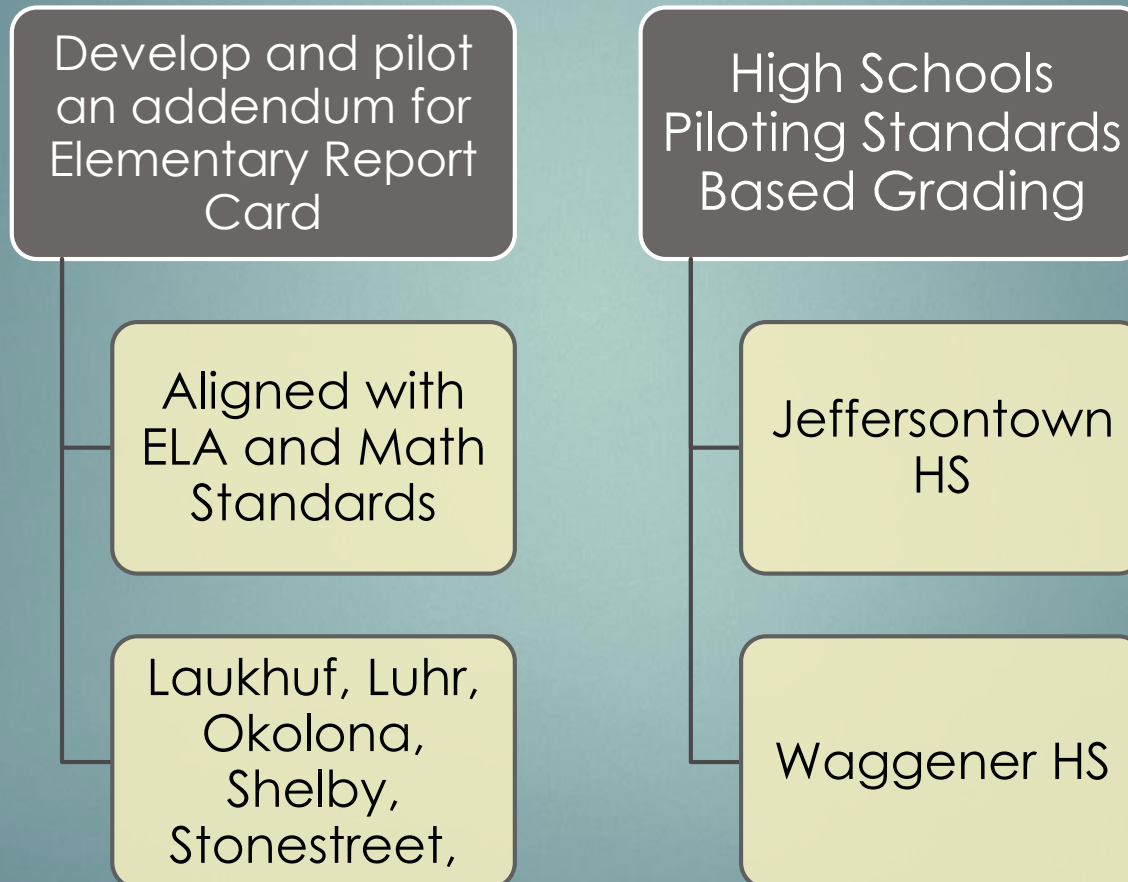
	Number of people responding per role group	Number of people surveyed per role group	% participating in the survey per role group
Counselors	41	266	15%
Gheens Admin	6	29	21%
Principals and APs	168	393	43%
Teachers	1741	6486	27%
Grand Totals	1956	7174	27%



# Survey Results



# Possible Pilots for Standards Based Grading



# Feedback Sessions



Revised  
SPP&Gs for  
Elementary,  
Middle &  
High

Invited all  
Stakeholders  
to attend

- Teachers,  
Principals,  
Assistant  
Principals,  
Counselors,  
GCCs, District  
Administrators

Provided  
feedback  
forms for  
each grade  
level

Most Work  
Team  
Members  
were present  
to answer  
questions

Feedback  
Session - Feb.  
27<sup>th</sup> at  
Gheens

# Utilizing Feedback



SPP&G Work  
Team met  
again to  
review all  
feedback and  
make  
additional  
revisions



SPP&Gs were  
sent to  
Materials and  
Production for  
board mock  
up



SPP&Gs were  
sent to Legal  
Counsel for  
review

# Overview of Key Changes



## Elementary SPP&G – Overview of Key Changes for 2014-15

### Jefferson County Board of Education

#### 1. Introduction

- Clarifies that the SPP&G is reviewed and approved by the board annually
- SPP&G supports the philosophy and vision of JCPS
- SPP&G complies with Kentucky Law

## Introduction

~~The This uniform Student Progression, Promotion, and Grading (SPP&G) Handbook is board policy and is not subject to change by SBDM Councils. summarizes and clarifies related policies and practices established by the 1990 Kentucky Education Reform Act (KERA) and the Jefferson County Board of Education (JCBE). The Jefferson County Public School (JCPS) District establishes uniform procedures for grading, progression, and promotion for elementary, middle, and high schools. These procedures contents of the SPP&G Handbook are reviewed and approved annually by the JCBE/Jefferson County Board of Education (JCBE). The Student Progression, Promotion, and Grading SPP&G Handbook supports the implementation of Kentucky state laws and the philosophy and vision of JCPS the Jefferson County Public Schools (JCPS) and complies with Kentucky state laws.~~