



# EARLY CHILDHOOD UPDATE

---

JEFFERSON COUNTY BOARD OF EDUCATION

MONDAY, FEBRUARY 24, 2014

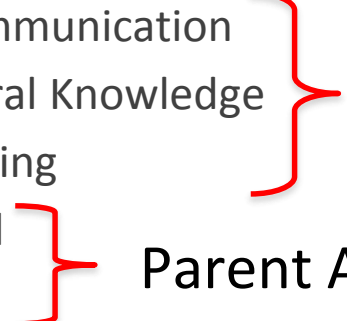
# What is the BRIGANCE Kindergarten Screen?

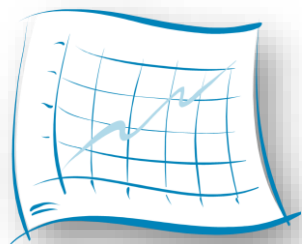
---

Administered to all KY Kindergarten Students

JCPS participated in 2012-13 KY Pilot

Screen measures

- Language & Communication
  - Cognitive/General Knowledge
  - Physical Well Being
  - Social Emotional
  - Self Help
- Teacher Administered
- Parent Administered
- 



# Did We Show Growth?

## Fall 2012 vs Fall 2013 Overall Kindergarten Readiness by Subgroup

	Fall 2012	Fall 2013	Gain	
All Students	34.6%	52.3%	17.7%	↑
Male	30.6%	48.5%	17.9%	↑
Female	38.8%	56.3%	17.5%	↑
White (Non-Hispanic)	40.6%	60.3%	19.7%	↑
African American	30.0%	46.9%	16.9%	↑
Hispanic	16.3%	30.1%	13.8%	↑
Asian	57.9%	68.0%	10.1%	↑
American Indian or Alaska Native				
Native Hawaiian or Other Pacific		60.0%		
Two or more races		55.5%		
Limited English Proficiency	18.7%	22.6%	3.9%	↑
Free Reduced Price Meals	24.5%	41.4%	16.9%	↑
Students with Disabilities	13.0%	26.3%	13.3%	↑

# How Do We Compare to the State?

## Fall 2013 JCPS vs State Overall Kindergarten Readiness by Subgroup

	JCPS Fall 2013	State Fall 2013	Gain	
All Students	52.3%	49.0%	3.3%	↑
Male	48.5%	43.6%	4.9%	↑
Female	56.3%	54.5%	1.8%	↑
White (Non-Hispanic)	60.3%	51.2%	9.1%	↑
African American	46.9%	44.2%	2.7%	↑
Hispanic	30.1%	28.0%	2.1%	↑
Asian	68.0%	61.6%	6.4%	↑
American Indian or Alaska Native		49.2%		
Native Hawaiian or Other Pacific	60.0%	51.4%	8.6%	↑
Two or more races	55.5%	50.5%	5.0%	↑
Limited English Proficiency	22.6%	26.1%	-3.5%	↓
Free Reduced Price Meals	41.4%	37.6%	3.8%	↑
Students with Disabilities	26.3%	28.2%	-1.9%	↓

# Who Do We Serve?

---

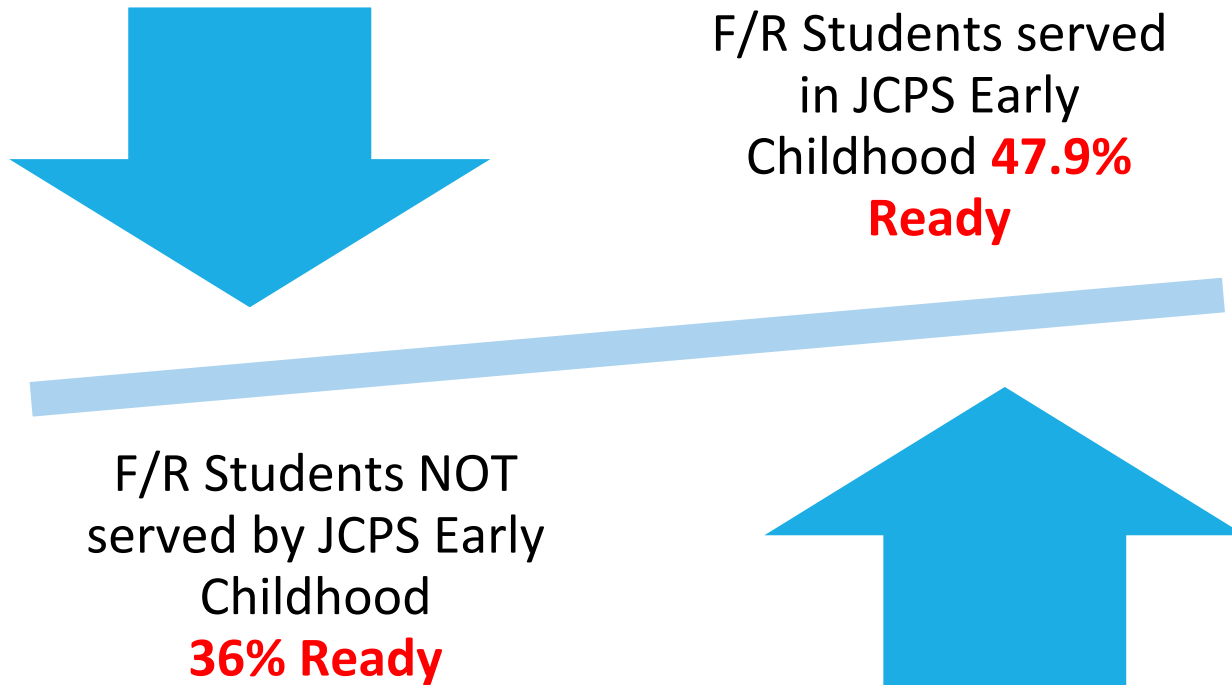


Approximately 98% of Early Childhood students are at or below 150% poverty level

Approximately 20% of the students in Early Childhood have a disability

# Are We Making a Difference?

---



# What Did We Do Differently?

---



Curriculum maps were aligned to early childhood standards

Teachers assessed student progress

Teachers used CASCADE assessment data to individualize instruction

# What Did We Do Differently?

---

Teachers developed  
action plans based on  
data

Resources were  
provided based on data

Professional  
development was  
provided based on data





# How Did We Increase Family & Community Involvement?

---

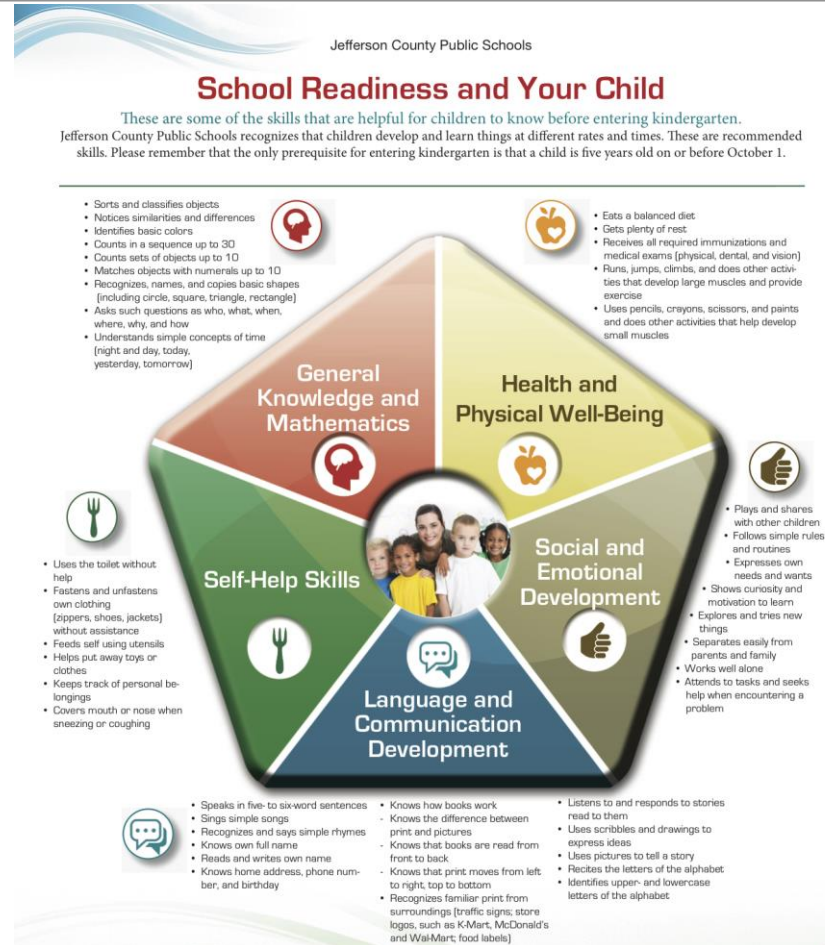
Engaged the Early  
Childhood Task  
Force

Provided a variety of  
parent engagement  
activities in a variety  
of locations and  
times

Distributed school  
readiness visuals to  
families and  
community agencies



# How Do We Define School Readiness?



# What Resources Are We Giving Parents?

---



Concerted  
Cultivation



Making the  
Readiness Visual  
Interactive

**family**  
resources

# How Do We Strengthen Links With the Community?

---

- Partner with faith-based organizations
- Target specific zip codes based on BRIGANCE data
- Provide activities to promote school readiness



# What Does the Future Hold?

---

## PNC –Save the Children Grant

- Home-based model
- Comprehensive support for families
- Improve school readiness

## National Center for Family Learning Partnership

- Enhance early childhood literacy curriculum
- Increase family engagement
- Minimize summer learning loss





# THANK YOU

---

Additional funds to operate the Early Childhood program (Title I and General funds)

VanHoose Annex - Early Childhood Intake Center

Participation on the Early Childhood Task Force

George Unseld Early Learning Center

Recognizing the importance of early childhood



# Key Take-Aways

---

- ✓ Overall Improvement in Kindergarten Readiness
- ✓ JCPS is outperforming the State
- ✓ Students served by EC are outperforming their counterparts
- ✓ Plan for Concerted Cultivation is underway

