

GENERAL ELECTRICAL NOTES

- COORDINATE ALL SITE WORK WITH UTILITIES SERVING THE SITE INCLUDING BUT NOT LIMITED TO THE FOLLOWING:

NOLIN RECC
(270) 765 6153
GREG HARRINGTON

BRANDENBURG TELEPHONE
(270) 351-4466
LES ROGERS
- ALL COSTS FROM THE UTILITY COMPANIES LISTED ABOVE SHALL BE THE ELECTRICAL CONTRACTOR'S FINANCIAL RESPONSIBILITY.
- COORDINATE AND SCHEDULE ALL ELECTRICAL SITE UTILITY WORK WITH THE GENERAL CONTRACTOR AND WORK OF OTHER TRADES.
- BY B.U.D.: BEFORE YOU DIG PHONE 811. THE UNDERGROUND UTILITIES SHOWN ON THESE DRAWINGS ARE FROM RECORD DRAWINGS AND FROM VISUAL INSPECTION OF THE SITE. UTILITIES LOCATIONS ARE APPROXIMATE AND THERE MAY BE OTHER UNDERGROUND UTILITIES IN THE AREA. CONTACT ALL UTILITY COMPANIES PRIOR TO BEGINNING ANY EXCAVATION.
- IF ANY CHARTED, UNCHARTED OR MISLOCATED UTILITY SERVICE IS INTERRUPTED, THE CONTRACTOR WILL WORK CONTINUOUSLY TO RESTORE SERVICE TO THE SATISFACTION OF THE OWNER/ARCHITECT.
- ALL CONDUIT MINIMUM 30" BELOW FINISHED GRADE UNLESS OTHERWISE NOTED.
- MINIMUM STANDARDS FOR ALL ELECTRICAL WORK SHALL BE THE LATEST REVISION OF THE NATIONAL ELECTRICAL CODE (NEC). WHENEVER AND WHEREVER OSHA, FEDERAL AND STATE LAWS, REGULATIONS AND DESIGN CRITERIA REQUIRE HIGHER STANDARDS THAN NEC, THESE LAWS, REGULATIONS, AND DESIGN CRITERIA SHALL BE FOLLOWED.
- CONTRACTOR SHALL FIELD VERIFY ALL EXISTING CONDITIONS. ANY DISCREPANCIES BETWEEN EXISTING CONDITIONS AND CONTRACT DOCUMENTS SHALL BE BROUGHT TO THE ATTENTION OF THE ENGINEER BEFORE ANY WORK RELATING TO THOSE CONDITIONS IS PERFORMED.
- ALL WORK SHALL BE PROVIDED IN ACCORDANCE WITH APPLICABLE LOCAL, STATE OR NATIONAL CODES AND THE LOCAL AUTHORITY HAVING JURISDICTION (AHJ). CONTRACTOR SHALL OBTAIN ALL PERMITS NECESSARY TO COMPLETE WORK. CONTRACTOR SHALL FURNISH AN ELECTRICAL INSPECTION BY AGENCY AUTHORIZED BY THE AHJ. ALL COST INCIDENTAL TO THE ELECTRICAL INSPECTION SHALL BE BORNE BY THE CONTRACTOR. CERTIFICATES OF APPROVAL BY THE ELECTRICAL INSPECTOR SHALL BE PROVIDED.

SITE UTILITY NOTES

THE UTILITIES ARE SHOWN ON THE DRAWINGS AS ACCURATELY AS THEY HAVE BEEN PROVIDED TO THE ARCHITECT/ENGINEER. THEIR LOCATIONS ARE NOT GUARANTEED. IT IS THE CONTRACTOR'S RESPONSIBILITY TO CONTACT ALL UTILITY COMPANIES AND TO HAVE ALL UTILITIES FIELD LOCATED, PRIOR TO STARTING CONSTRUCTION. THE UTILITIES SHOWN REPRESENT OBSERVABLE FEATURES ALONG WITH INFORMATION PROVIDED BY THE RESPECTIVE UTILITY COMPANIES, AND IS THEREFORE NOT WARRANTED. PRIOR TO CONSTRUCTION THE CONTRACTOR IS TO FIELD VERIFY ALL UTILITY LOCATIONS, SIZES, TYPE ETC. NEEDED TO COMPLETE THE WORK OF THE CONTRACT.

THE CONTRACTOR SHALL NOTIFY THE ARCHITECT/ENGINEER IF A PROBLEM COULD EXIST. IF THE CONTRACTOR PROCEEDS WITHOUT CONTACTING THE UTILITY COMPANIES AND DOES NOT NOTIFY THE ARCHITECT/ENGINEER OF POTENTIAL PROBLEMS HE DOES SO AT HIS OWN RISK.

ALL CONTRACTORS SHALL BE REQUIRED TO VISIT THE SITE PRIOR TO SUBMITTING A BID ON THE PROJECT. CHANGE ORDERS FOR DEMOLITION, RENOVATION OR BUILDING ADDITIONS OF ITEMS READILY NOTICEABLE OR REASONABLY INFERRED BY SITE OBSERVATION SHALL NOT BE CONSIDERED.

PRIOR TO TERMINATION AND REMOVAL OF UTILITIES, THE CONTRACTOR SHALL VERIFY THESE UTILITIES ARE NOT SERVING AREAS OUTSIDE THE DEMOLITION/NEW WORK LIMITS. IF ANY OF THESE UTILITIES ARE SERVING AREAS OUTSIDE THE DEMOLITION/NEW WORK LIMITS, THE CONTRACTOR SHALL NOT REMOVE ANY OF THESE UTILITIES. NOTIFY THE ARCHITECT/ENGINEER SO COORDINATION AND CLARIFICATION CAN OCCUR.

THE CONTRACTOR SHALL HAVE THE UTILITY COMPANY LOCATE THE BURIED LINES.

AREAS OUTSIDE THE DEMOLITION/NEW WORK LIMITS HAVE OCCUPIED BUILDINGS. ALL NECESSARY CARE SHALL BE TAKEN BY THE CONTRACTOR TO ENSURE THE SAFETY OF THE RESIDENTS, AND ADJACENT PROPERTY.

PROVIDE NECESSARY PRECAUTIONS TO AVOID DAMAGE TO EXISTING STRUCTURES THAT REMAIN IN PLACE, TO BE REUSED OR TO REMAIN THE PROPERTY OF THE OWNER. ANY DAMAGED ITEMS SHALL BE REPAIRED OR REPLACED AT NO ADDITIONAL COST.

ALL EXCESS DEMOLITION DEBRIS SHALL BE REMOVED FROM THE SITE AND DISPOSED OF LEGALLY IN A LANDFILL APPROVED BY AN AGENCY HAVING JURISDICTION.

THE CONTRACTOR SHALL TAKE NECESSARY PRECAUTIONS NOT TO DAMAGE EXISTING PAVING, SIDEWALKS AND CURBS WHERE NOTED TO REMAIN. IF THE PAVING, SIDEWALKS AND/OR CURBS ARE DAMAGED, THE CONTRACTOR SHALL REPAIR THEM PER THE SPECIFICATIONS OF AUTHORITIES HAVING JURISDICTION.

THE GENERAL CONTRACTOR SHALL BE RESPONSIBLE FOR OBTAINING AND PAYING THE COST OF ALL PERMITS AND FEES REQUIRED BY AUTHORITIES HAVING JURISDICTION OVER THE PROJECT. THE CONTRACTOR SHALL PAY FOR ALL HIGHWAY FEES, UTILITY SERVICE FEES (PLUMBING, ELECTRICAL, SANITARY TAP, ETC.), FOR ALL RELOCATION COSTS AND/OR RELOCATION FEES, AND FOR ALL DAMAGES TO SIDEWALKS, STREETS AND/OR OTHER PUBLIC PROPERTY.

WHERE PAVEMENT, WALKS, ETC. ARE TO BE DEMOLISHED, SAWCUT EDGE AT ALL AREAS ADJACENT TO ITEMS INDICATED TO REMAIN TO PROVIDE CLEAN, STRAIGHT EDGE.

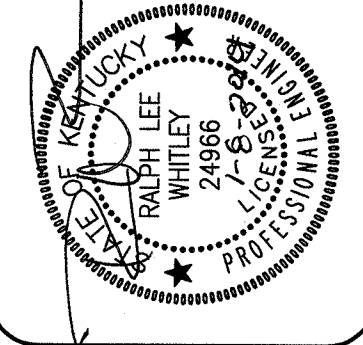
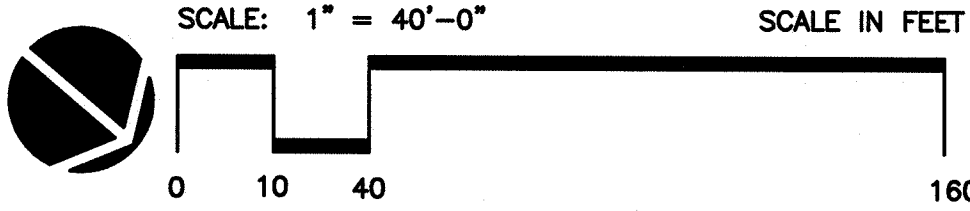
PROVIDE APPROVED PROTECTION AND COORDINATE INSTALLATION OF TEMPORARY SERVICES OR CONNECTION FOR ELECTRICAL AND MECHANICAL UTILITIES.

SHEET NOTES:

- GRINDER PUMP STATION. INSTALL PER MANUFACTURERS RECOMMENDATIONS. REFER TO DETAIL ON SHEET SU1.1.
- GRINDER PUMP CONTROL PANEL. REFER TO DETAIL ON SHEET SU1.1.
- 8'x8' SECURITY FENCE WITH 6' WIDE DOUBLE GATE. REFER TO DETAIL ON SHEET SU1.1.
- CONNECT NEW 4" SANITARY TO EXISTING AT THIS LOCATION. SAW CUT EXISTING CONCRETE. PATCH AND REPAIR TO MATCH EXISTING CONDITION.
- CONNECT NEW 2" SANITARY TO EXISTING. FIELD VERIFY LOCATION.
- 3" FORCE MAIN. MAINTAIN AT LEAST 36" OF COVER.
- 4" VENT PIPING. SLOPE PIPING UP AT 1/8" - 1'.
- SAW CUT SIDEWALK FOR INSTALLATION OF FORCE MAIN. PATCH AND REPAIR TO MATCH EXISTING CONDITIONS.
- COORDINATE NEW PIPING WITH EXISTING STORM PIPING. FIELD VERIFY LOCATION AND DEPTH.
- COORDINATE NEW PIPING WITH EXISTING UTILITIES INCLUDING UNDERGROUND ELECTRIC, CABLE, FIBER OPTIC, WATER AND OTHERS. FIELD VERIFY LOCATION AND DEPTH.
- SAW CUT ASPHALT PARKING LOT AND DRIVE FOR INSTALLATION OF FORCE MAIN. PATCH AND REPAIR TO MATCH EXISTING CONDITIONS.
- CORE DRILL MANHOLE AND CONNECT NEW FORCE MAIN. SEAL WATER TIGHT. COORDINATE WORK WITH VIOLA.
- TRANSITION 2" TO 4" AND STUB OUT 4" FOR FUTURE CONNECTION.
- ROUTE NEW VENT PIPING TO TO 24" ABOVE ROOF. SECURE PIPING TO WALL.
- PROVIDE NEW DISCONNECT AND FEEDER CONNECTION AT EXISTING FIELDHOUSE SERVICE, SEE PARTIAL PLAN AND ELECTRICAL RISER SHEET SU1.1.
- PROVIDE UNDERGROUND FEEDER TO PUMP STATION CONTROL PANEL, SEE ELECTRICAL RISER SHEET SU1.1.
- PROVIDE SUPPORT FRAME AND INSTALL CONTROL PANEL FURNISHED WITH PUMPS. PROVIDE CONDUITS WITH SEAL FITTINGS ROUTED UNDERGROUND TO WETWELL FOR CONTROL AND POWER CABLE INSTALLATION; COORDINATE SIZE AND QTY WITH PUMP MANUFACTURER.

NORTH HARDIN
HIGH SCHOOL

1
SU1.0
SEWER PLAN - PLUMBING
1" = 40'-0"



North Hardin High School
Sanitary Sewer Replacement
801 S Logsdon Pkwy
Radcliff, KY 40160

SHROUT/TATE/WILSON
Consulting Engineers
MECHANICAL • ELECTRICAL
628 WINCHESTER ROAD • LEXINGTON, KENTUCKY 40505
PH: 859-277-8177 • FAX: 859-277-8372
EMAIL: STW@STWENG.COM

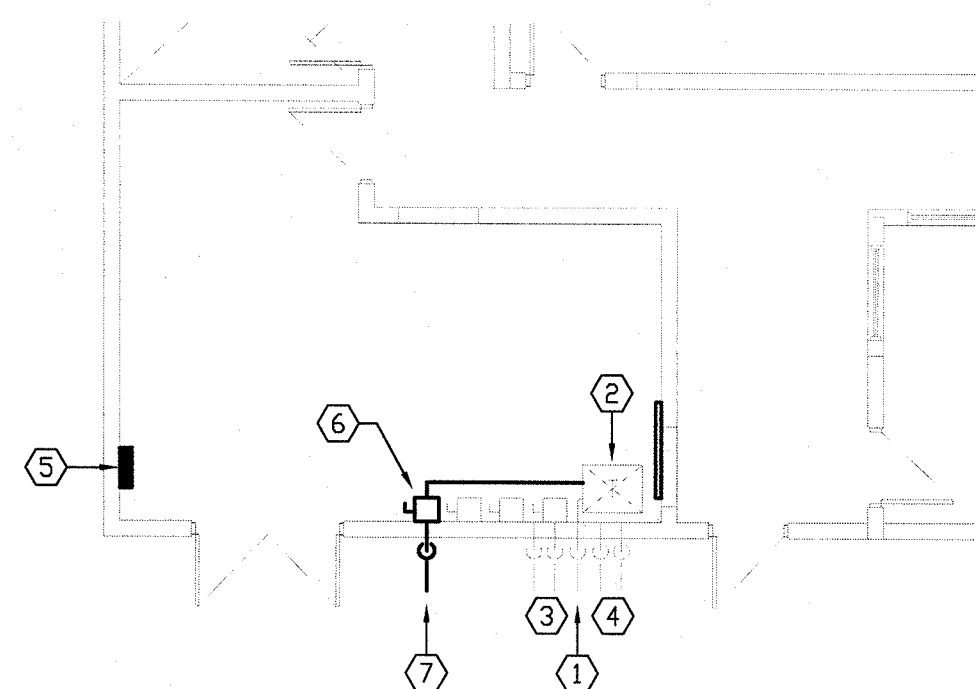
SEWER PLAN
PLUMBING

JOB NO. 1369
DATE 2014.01.08
DRAWN BY
CHECKED BY
COPYRIGHT © 2014
SHROUT / TATE /
WILSON, PLLC

REVISIONS

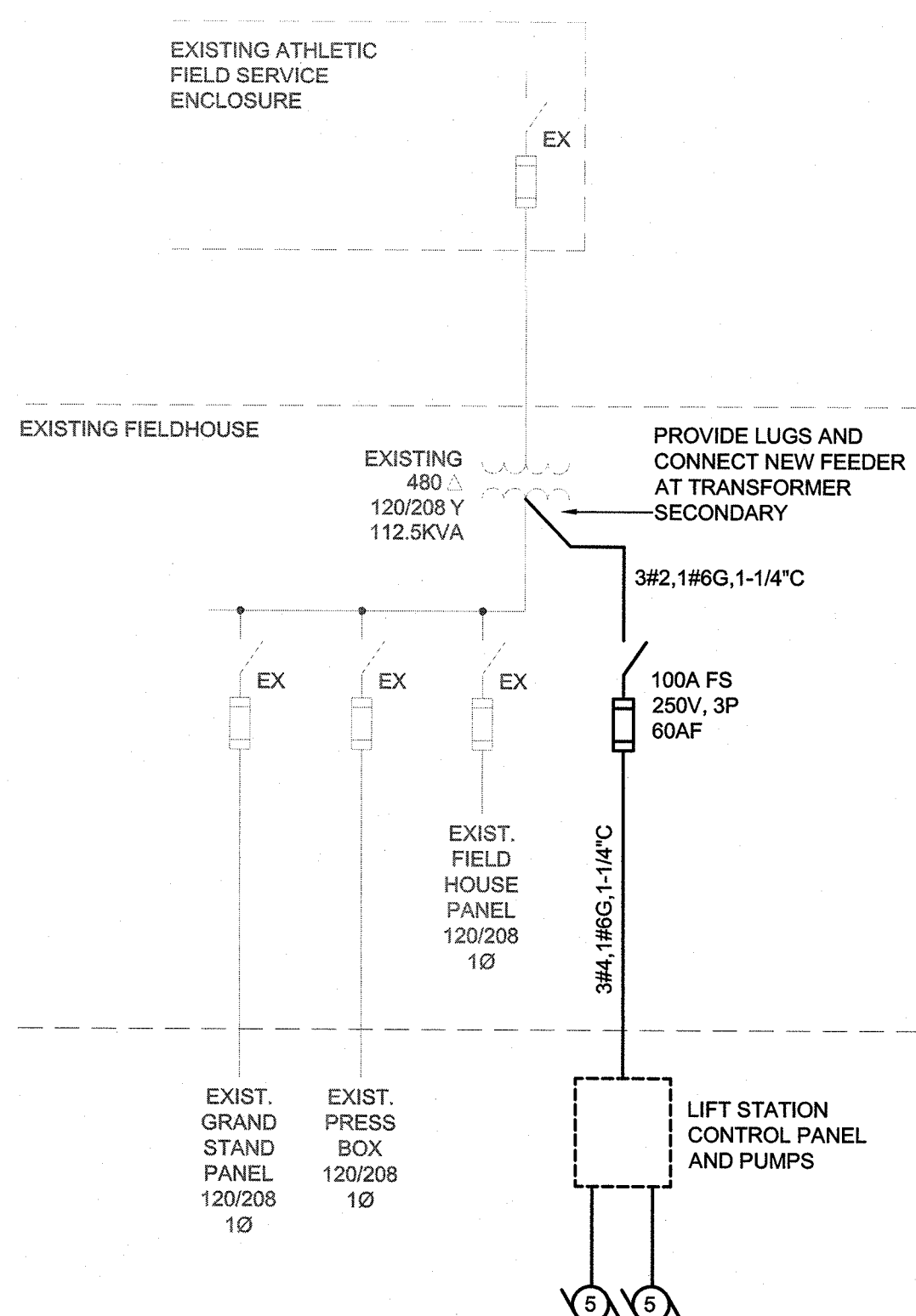
SHEET

SU1.0

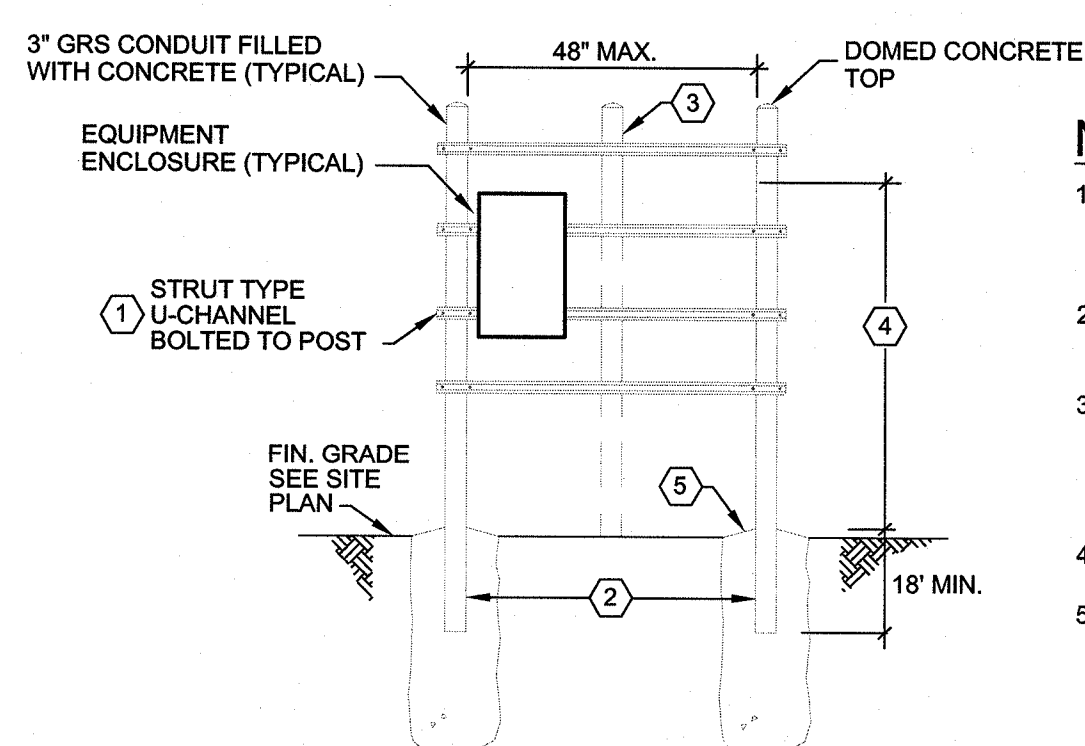


- PLAN NOTES**
- EXISTING UNDERGROUND 480V/3 FEEDER FROM ATHLETIC FIELD SERVICE TO REMAIN.
 - EXISTING 112.5 KVA TRANSFORMER, PROVIDE ADDITIONAL LUGS INSTALLED IN ACCORDANCE WITH MANUFACTURER'S INSTRUCTIONS FOR CONNECTION OF NEW LIFT STATION FEEDER AS INDICATED, SEE RISER.
 - EXISTING UNDERGROUND FEEDERS FROM FIELDHOUSE TO FOOTBALL GRANDSTAND PRESS BOX AND CONCESSION/LOCKER ROOM PANELS TO REMAIN.
 - EXISTING UNDERGROUND COMMUNICATION CONDUIT TO REMAIN.
 - EXISTING FIELDHOUSE PANEL TO REMAIN.
 - PROVIDE NEW FUSIBLE DISCONNECT FOR LIFT STATION FEEDER, SEE RISER.
 - NEW UNDERGROUND FEEDER TO LIFT STATION, SEE RISER.

1 PARTIAL FIELDHOUSE PLAN - ELECTRICAL
1/8" = 10"

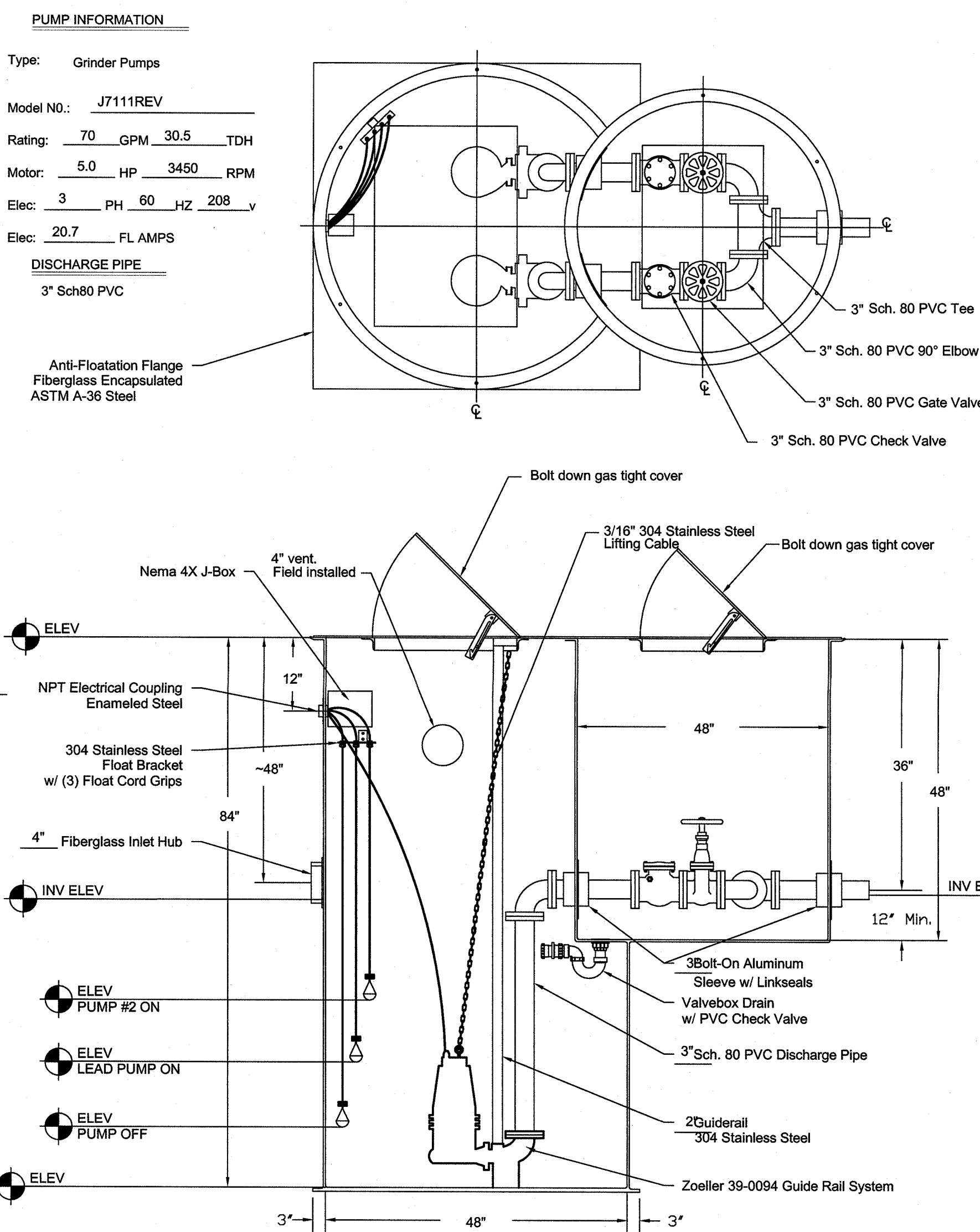


2 ELECTRICAL RISER
NO SCALE

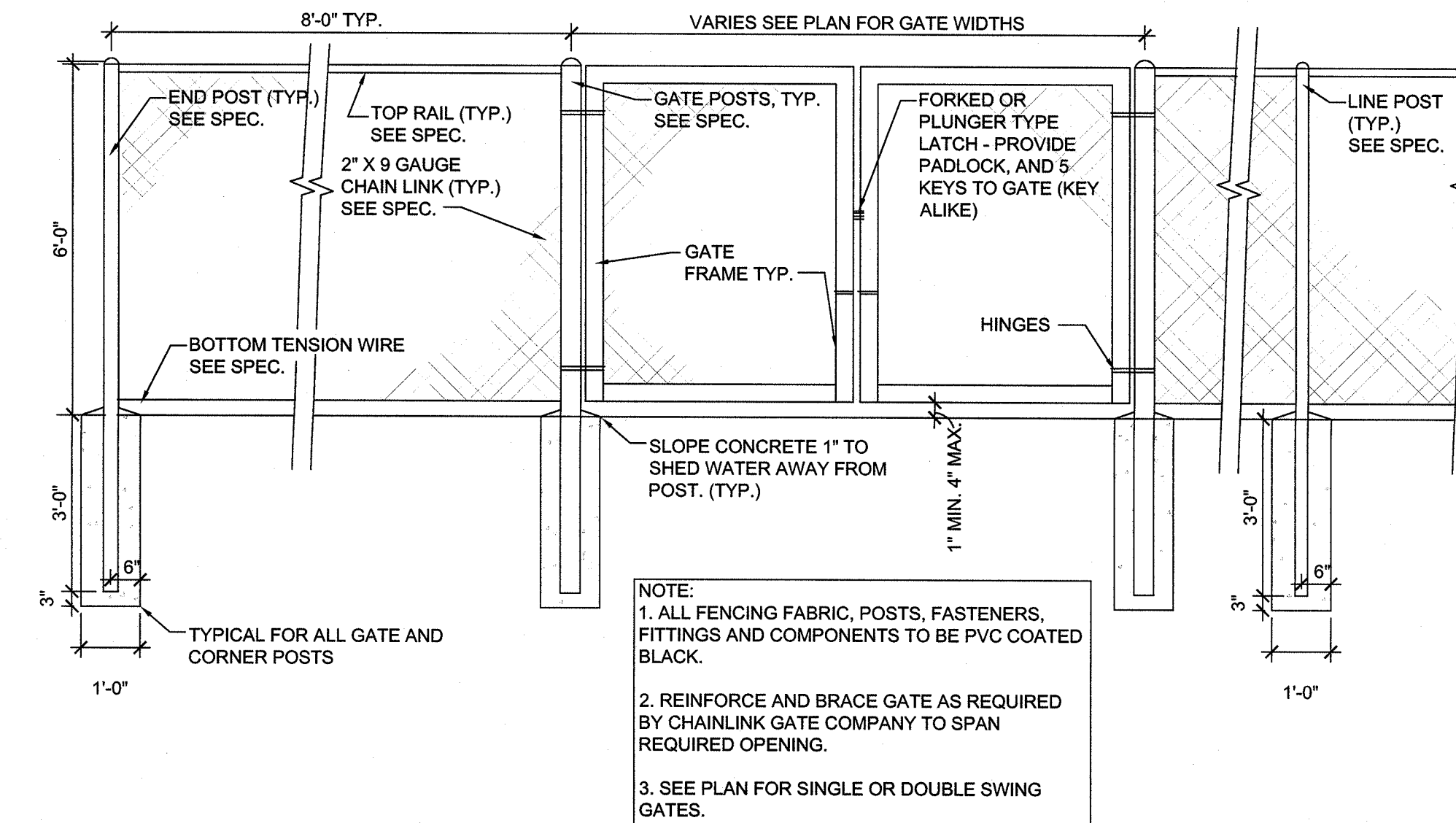


3 TYPICAL EQUIPMENT SUPPORT
NO SCALE

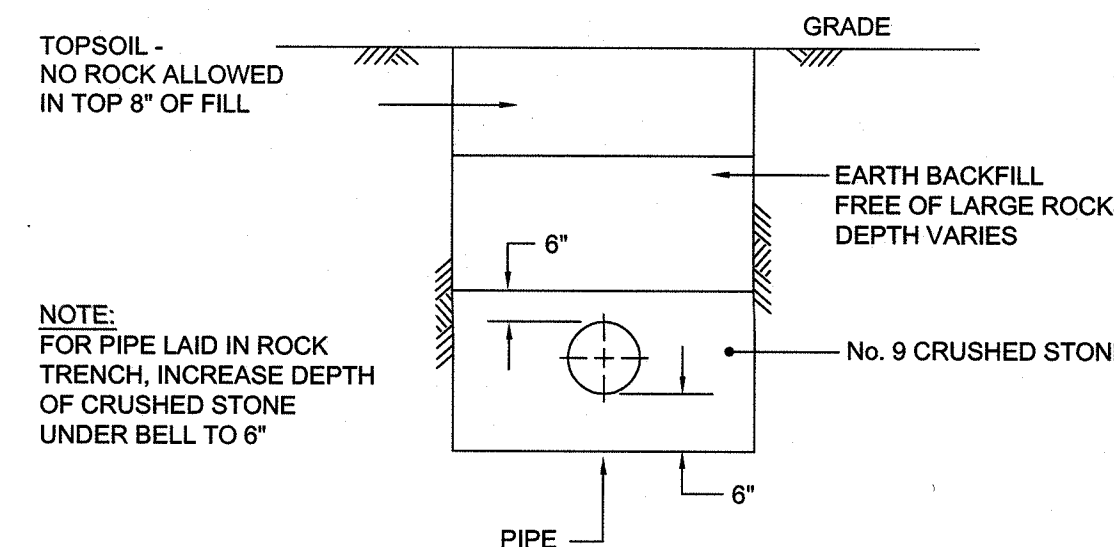
- NOTES**
- FURNISH AND INSTALL MINIMUM (4) U-CHANNEL SPANS BETWEEN POSTS AND ADD ADDITIONAL AS REQUIRED FOR SUPPORT OF EQUIPMENT AND CONDUITS.
 - PAINT RGS POSTS WITH MIN. 2 COATS OF BITUMASTIC WHERE IN CONTACT WITH CONCRETE.
 - FURNISH AND INSTALL ADDITIONAL SUPPORT POST WITH CONCRETE BASE WHERE SPAN EXCEEDS 48" AND ADDITIONAL POSTS AS REQUIRED SUCH THAT NO SPAN BETWEEN POSTS EXCEEDS 48".
 - 6'-6" MAXIMUM HEIGHT TO TOP OF ELECTRICAL EQUIPMENT
 - FURNISH AND INSTALL 18" DIAMETER BY 30" DEEP CONCRETE BASE FOR EACH SUPPORT POST REQUIRED. BASES SHALL BE A SINGLE HOMOGENEOUS CONCRETE POUR.



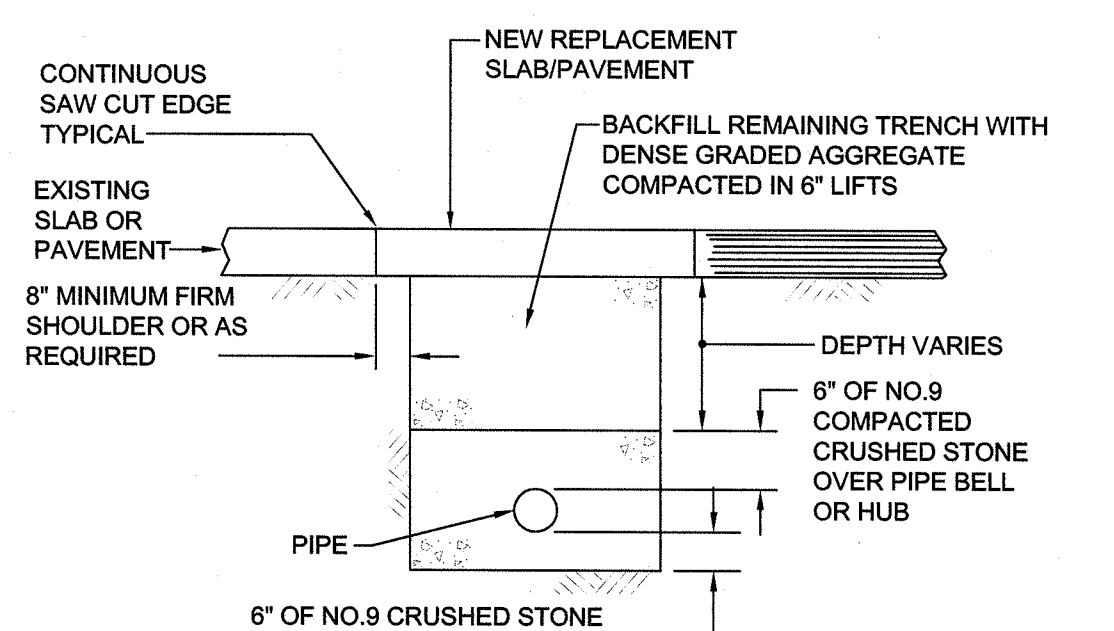
4 DUPLEX GRINDER PUMP STATION
NO SCALE



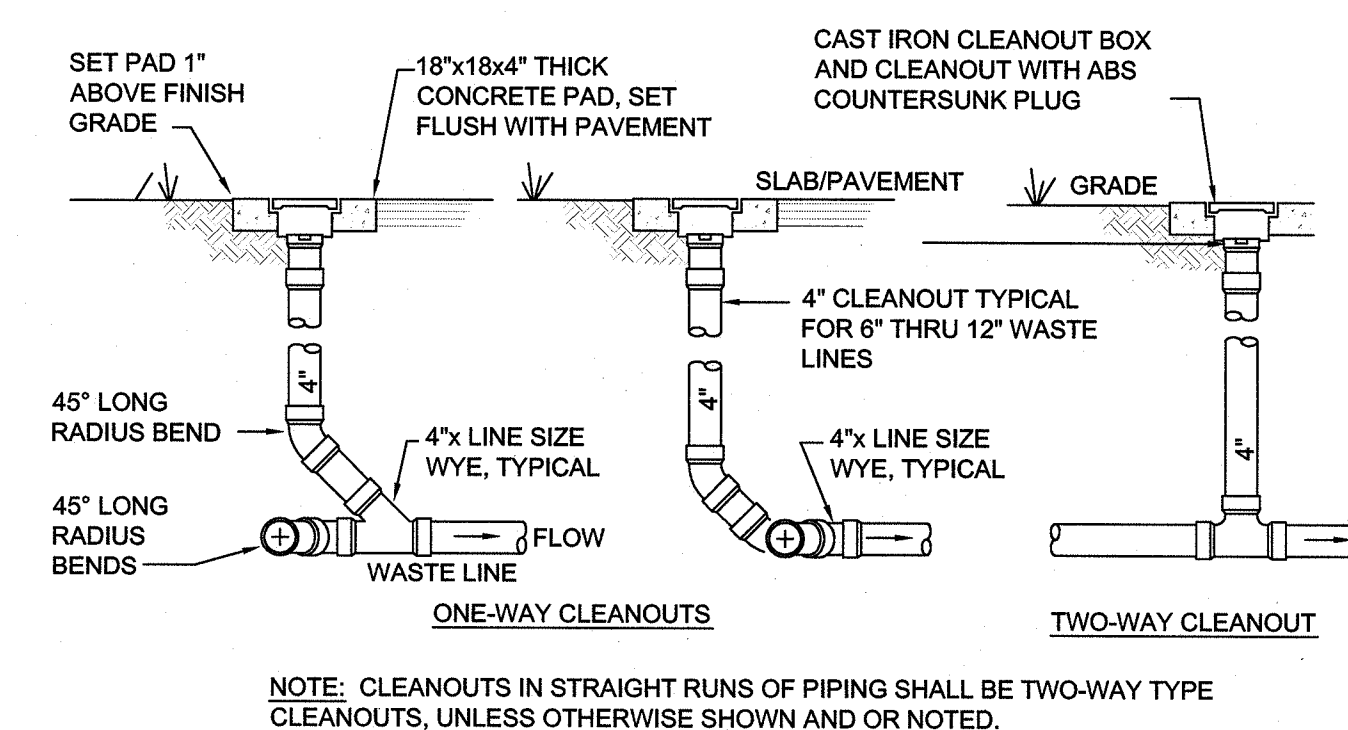
5 CHAINLINK FENCE DETAIL
NOT TO SCALE



6 TRENCH DETAIL FOR EARTH COVER
NOT TO SCALE



7 TRENCH DETAIL FOR EXISTING SLAB/PAVEMENT
NOT TO SCALE



8 SANITARY SEWER CLEANOUT DETAIL
NOT TO SCALE

SHROUT/TATE/WILSON Consulting Engineers
MECHANICAL • ELECTRICAL
628 WINCHESTER ROAD • LEXINGTON, KENTUCKY 40505
PH: 859-277-8177 • FAX: 859-277-8372
EMAIL: STW@STWENGINEERING.COM

**SEWER DETAILS
PLUMBING**

JOB NO. 1369
DATE 2014.01.08
DRAWN BY MM/DE
CHECKED BY RW/WC
COPYRIGHT © 2014
SHROUT / TATE / WILSON, PLLC

REVISIONS

SHEET

SU1.1