



HARDIN COUNTY SCHOOLS EARLY COLLEGE AND CAREER CENTER

SCB Project No. 1309

Construction Update January 6, 2014



Original Construction Cost:	\$15,362,000.00
Present Construction Cost:	\$15,372,988.00 (<i>Revised by Change Order No. 1</i>)

Original Completion Dates	
Substantial Completion:	July 1, 2014
Final Completion:	August 1, 2014

Anticipated Completion Dates	
Substantial Completion:	July 1, 2014
Final Completion:	August 1, 2014

Progress Report

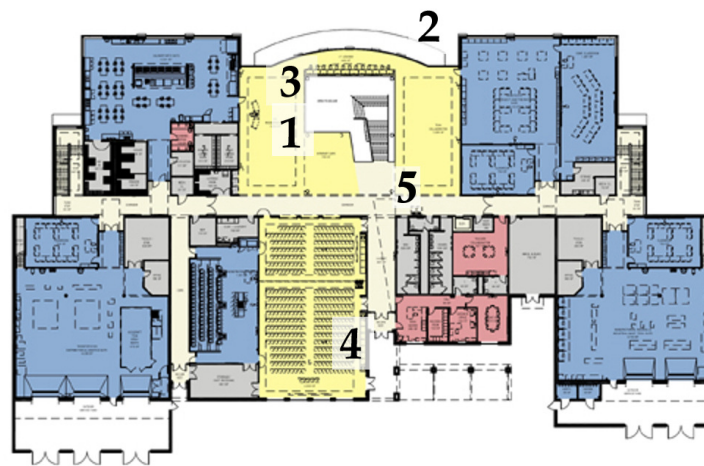
Past Two Weeks Progress:

1. Backfill of the 12" ICF is completed
2. Stone on the west drive and rear parking lot has stopped due to weather
3. The water vault has been installed
4. The concrete steps at the lobby are completed
5. Slab on deck has started, 45% complete
6. The ICF bearing walls on the upper level walls are approximately 75% complete
7. The CMU on Lower Level is 98% complete, and the Upper Level has begun
8. Brick has begun
9. The bar joists for the Upper Level framing and decking is 98% complete, Roof joists have begun
10. Metal stud framing has begun
11. Door frames are being set and grouted.
12. Plumbing rough-in on the Upper Level has begun
13. Duct work installation has begun
14. Hydronic piping and domestic water piping has begun
15. Sprinkler installation has begun
16. Electrical rough-in at Lower Level is ongoing and Upper Level Rough-in has begun.

Next Two Weeks Progress:

1. Continue water main
2. Continue ICF walls
3. Continue brick and CMU walls
4. Continue structural steel, joists, and decking
5. Continue metal stud framing
6. Continue MEP rough-in
7. Continue slab on deck
8. Continue sprinkler piping

Upper Level



1



2



3



4



5



