

DATE:	September 13, 2013	CO #:	13 (Thirteen)
TO:	Endeavor Construction Company 977 State Route 28 Milford, Ohio 45150	PROJECT:	Gallatin County Alternative School & Field House Gallatin County, Kentucky BG 12-133 RTA 0914
CONTRACT DATE:	December 5, 2012	CONTRACT FOR:	General Construction

THE CONTRACT IS CHANGED AS FOLLOWS:

(Include, where applicable, any undisputed amount attributable to previously executed Construction Change Directives.)

The Contractor is providing a material credit per the change order as requested by the Owner in Proposal Request 14 to adjust the speaker system to the football press box from the American Sound Community R2.0 speakers to the American Sound Community R0.5 speakers. A breakdown of the credit is attached for additional information.

TOTAL AMOUNT OF THIS CHANGE ORDER: (\$ 2,085.34)

The original Contract Sum was	\$3,493,000.00
The net change by previously authorized Change Orders	\$53,422.70
The Contract Sum prior to this Change Order was	\$3,546,422.70
The Contract Sum will be Decreased by this Change Order in the amount of	(\$2,085.34)
The new Contract Sum including this Change Order will be	\$3,544,337.36
The Contract Time will be Changed	0 Days
The Date of Substantial Completion as of the date of this Change Order is therefore	December 9, 2013

NOTE: This Change Order does not include changes in the Contract Sum, Contract Time or Guaranteed Maximum Price which have been authorized by Construction Change Directive until the cost and time have been agreed upon by both the Owner and Contractor, in which case a Change Order is executed to supersede the Construction Change Directive.

NOT VALID UNTIL SIGNED BY THE ARCHITECT, CONTRACTOR AND OWNER:

Rosstarrant Architects, Inc.
101 Old Lafayette Avenue
Lexington, Kentucky 40502

ARCHITECT *(Firm name and address)*

Endeavor Construction
977 State Route 28
Milford, Ohio 45150

CONTRACTOR *(Firm name and address)*

Gallatin County Board of Edu.
75 Boardwalk
Warsaw, Kentucky 41095

OWNER *(Firm name and address)*

BY *(Signature)*

(Typed or printed name)

DATE

BY *(Signature)*

(Typed or printed name)

DATE

BY *(Signature)*

(Typed or printed name)

DATE

CHANGE ORDER PRICING REVIEW

Date: 26-Aug-13

Project:	<u>Gallatin Co - Alternative School</u>	Description:	<u>COR # 016</u>
Contractor:	<u>Endeavor Construction</u>		<u>PR #014 - Speaker Changes per</u>
Owner:	<u>Gallatin Co Board of Education</u>		<u>Owner's Request</u>
Architect:	<u>Ross Tarrant Architects</u>		

TOTALS

A. LABOR: \$0.00

B. EQUIPMENT RENTALS \$0.00
(Heavy/specialized equipment) duration x rate

C. OWNED EQUIPMENT \$0.00
(Heavy/specialized equipment) duration x rate

D. TRUCKING: \$0.00
(Delivery charge)

Subtotal (A, B, C, D): \$0.00

E. MATERIALS \$0.00
quantity x unit

Subtotal (A, B, C, D, & E): \$0.00

F. OVERHEAD & PROFIT 15% (on items A, B, C, D, E) \$0.00

Endeavor Subtotal (A thru F): \$0.00

G. SUBCONTRACTOR

American Sound (\$2,085.34)

H. SUBCONTRACTOR MARKUP

Subcontractor Subtotal (G and H): (\$2,085.34)

TOTAL COST (A thru F) + (G and H): (\$2,085.34)

I. MISC ITEMS (cost only - no markup)

1. Bond extension Total	Cost x <u> </u>	<u>\$0.00</u>
2. Premium portion of approved OT wages		<u>\$0.00</u>

TOTAL COST (A thru F) + (G and H) + (I): (\$2,085)



1800 RUSSELL ST.
COVINGTON, KY 41014-1187
859-261-9024 Fx 859-655-4746
Email: ase@asei.cc Web: www.americansound.cc

Project Number: 1332

**** Proposal ****

8/22/2013

This ** Proposal ** is Valid for 30 Days.

FOOTBALL FIELD SOUND
LOUDSPEAKERS

Bill To:

DELTA ELECTRICAL CONTRACTORS
ERIC SCHEIDT
4890 GRAY ROAD
CINCINNATI, OH 45232

Tel: 513-421-7744

Fax: 513-421-7744

Ship To:

GALLATIN COUNTY ALTERNATIVE
SCHOOL & FIELD HOUSE
NEW FOOTBALL FIELD
70 WILDCAT CIRCLE
WARSAW, KY 41095

Mfr-Part No.	Qty Description	Unit Price	Extended
** RETURN EQUIPMENT FOR CREDIT			
R2-474Z	-2 FULL-RANGE 3-WAY DUAL 12" GREY 40-70 X 40	1,667.50	-3,335.00
R2-694Z	-1 FULL-RANGE 3-WAY DUAL 12" GREY 60-90 X 40	1,667.50	-1,667.50
R2-52Z	-1 FULL-RANGE 3-WAY DUAL 12" GREY 50 X 20 ALL-WEATHER	1,845.75	-1,845.75
	1 COMMUNITY PROFESSIONAL RESTOCK FEE 20%	1,369.65	1,369.65
	1 RETURN SHIPPING	262.50	262.50
SUB TOTAL / RETURN EQUIPMENT			-5,216.10
** PROVIDE ALTERNATE EQUIPMENT AS LISTED			
R.5-99Z	2 FULL-RANGE 2-WAY 12" GREY 90 X 90 ALL-WEATHER	812.20	1,624.40
R.5-94Z	2 FULL-RANGE 2-WAY 12" GREY 90 X 40 ALL-WEATHER	812.20	1,624.40
SUB TOTAL / ADD EQUIPMENT			3,248.80

**** FOR INSTALLATION AND TESTING OF ALTERNATE SPEAKERS AS LISTED.**

**** PLUS TAX AND FREIGHT IF APPLICABLE.**

Accepted By: _____ Date: _____

Signature: _____ Date: _____

DAVE HILLMANN, Communication Consultant, davehillmann@asei.cc

KY Sales Tax (\$ 118.04)

Project Total: (\$ 2,085.34)

Press Box / Left side (1) Unit / Right side (1) Unit

SPECIFICATIONS

Loudspeaker Type:	2-way, horn loaded coaxial, weather-resistant
Operating Range:	85 Hz to 16 kHz 125 Hz to 10 kHz (± 4 dB)
Max Input Ratings:	200W continuous, 500W program 40 volts RMS, 89 volts momentary peak
Recommended Power Amplifier:	420W to 600W @ 8 ohms
Sensitivity (1W/1m):	101 dB SPL (125 Hz to 10 kHz 1/3 octave bands) 102 dB SPL (250 Hz to 4 kHz speech range)
Maximum Output:	124 dB SPL / 131 dB SPL (peak)
Nominal Impedance:	8 ohms
Minimum Impedance:	4.2 ohms @ 9.7 kHz
Nominal -6dB Beamwidth:	90° H (+1° / -46°, 1.6 kHz to 12.5 kHz) 40° V (+16° / +1°, 1.6 kHz to 12.5 kHz)
Axial Q / DI:	18.1 / 12.6, 1.6 kHz to 10 kHz
Crossover Frequency:	2 kHz
Recommended Signal Processing:	90 Hz high pass filter
Drivers:	LF (1) 12" Ferrofluid-cooled HF (1) 1" exit, titanium free, Ferrofluid-cooled
Driver Protection:	DYNA-TECH
Input Connection:	12 foot (4 m) SJOW #16 gauge
Controls:	None
Enclosure:	Rotomolded LLDPE, light grey
Mounting/Rigging Provisions:	(5) 3/8-16 rigging points
Grille:	3-layer WeatherStop™, light grey (Zinc-rich epoxy dual-layer powder coated perforated steel grille, foam, woven poly mesh)
Environmental Performance:	IEC529 IP55W rating with a minimum 5-degree downward aiming angle
Required Accessories:	24 dB/Oct high pass filter
Supplied Accessories:	(1) Yoke bracket, light grey (1) Aiming strap
Optional Accessories:	PMB Series pole mount brackets
Dimensions—Height:	16 inches (406.4 mm)
Width:	16 inches (406.4 mm)
Depth:	15.94 inches (404.88 mm)
Weight:	35 lbs (15.9 kg)
Shipping Weight:	40 lbs (18.14 kg)

NOTES:

1. Sensitivity: Free field pink noise measurement at 40 ft (12.2 m) at 60% power; extrapolated to 1 meter and an input of 2.83 volts RMS.
2. Watts: All wattage figures are calculated using the rated nominal impedance.



APPLICATIONS

- Fill speaker for stadia, athletic fields, arenas and race tracks
- Convention centers
- Outdoor background music / paging systems
- Theme and amusement parks
- Fairgrounds, rodeos, air shows
- Malls, cruise ships, skating rinks
- Swimming pools
- Portable sound systems

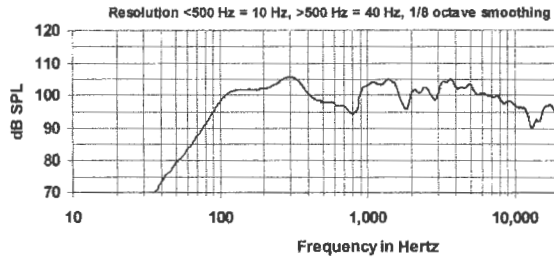
FEATURES

- Weather-resistant, rotomolded UV enclosure
- Weather-treated drivers and crossovers
- Corrosion-resistant zinc-rich epoxy dual-layer powder coated steel grille and yoke
- Pattern control down to 630 Hz
- High efficiency
- Integral mounting points
- High power passive crossover
- DYNA-TECH protection circuitry

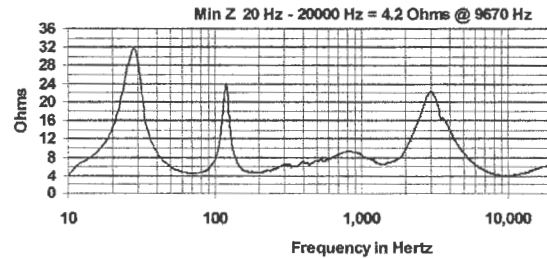
DESCRIPTION

The R.5-94Z two-way, full-range loudspeaker system is engineered to provide quality full-range sound projection in a variety of outdoor and indoor applications. Its wide range, smooth frequency response and high efficiency ensure both high fidelity music reproduction and superb projection of clear intelligible speech with very low distortion. Five-year limited product warranty; fifteen-year enclosure warranty.

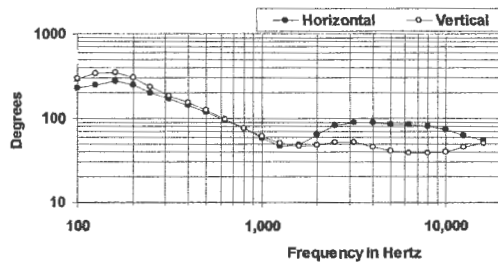
FREQUENCY RESPONSE



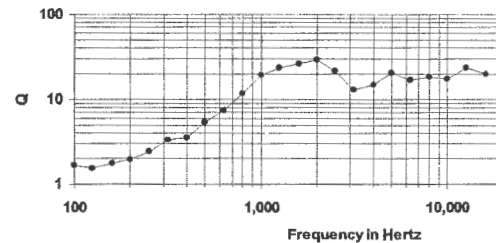
IMPEDANCE



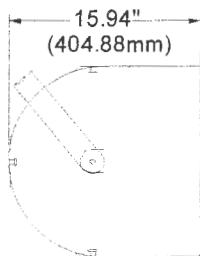
BEAMWIDTH



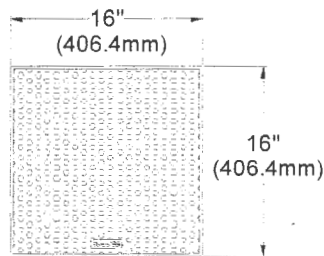
AXIAL Q



DIMENSIONS



SIDE VIEW

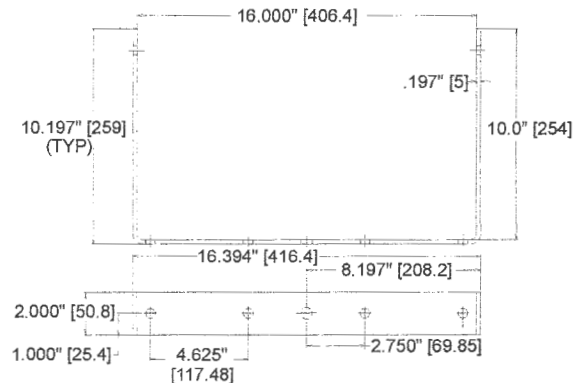


FRONT VIEW



REAR VIEW

R.5 YOKE



ARCHITECTURAL SPECIFICATIONS

The loudspeaker system shall be a horn-loaded, two-way, coaxial design consisting of one 12" Ferrofluid-cooled driver and one 1" exit, titanium free, Ferrofluid-cooled compression driver mounted on a horn inside the cabinet. The drivers shall be connected to a passive crossover network with a crossover frequency at 2 kHz with driver protection using DYNA-TECH protection circuitry. The cabinet shall be a rotomolded linear low density polyethylene enclosure providing weather and UV resistance with a three-layer weather resistant grille. The steel grille shall be powder coated with a proprietary zinc-rich epoxy dual-layer powder coating process in light grey to color match the enclosure. The system shall have an IEC529 IP rating of IP55W with a minimum 5-degree downward aiming angle. The input connection shall be one 12' (4m) SJOW #16 gauge cable with stripped ends. The enclosure shall incorporate five 3/8-16 rigging points for multiple mounting options. In addition, the loudspeaker will be supplied with one zinc-rich epoxy dual-layer powder coated steel yoke bracket. The loudspeaker system shall have an amplitude response of 85 Hz to 16 kHz (+/- 4 dB), an input capacity of 40V RMS, 102 dB SPL sensitivity @ 2.83V / 1 meter between 250 Hz to 4 kHz at a nominal 8 ohm impedance. The nominal dispersion shall be 90° x 40° over a frequency range of 1.6 kHz to 12.5 kHz. The dimensions of the enclosure are defined as 16" x 16" x 16" (HWD) at a weight of 35 lbs.

Community strives to improve its products on a continual basis. Specifications are therefore subject to change without notice.

Press Box Center Fill (2) Units Total

SPECIFICATIONS

Loudspeaker Type:	2-way, horn loaded coaxial, weather-resistant
Operating Range:	85 Hz to 16 kHz 125 Hz to 10 kHz (± 5 dB)
Max Input Ratings:	200W continuous, 500W program 40 volts RMS, 89 volts momentary peak
Recommended Power Amplifier:	420W to 600W @ 8 ohms
Sensitivity (1W/1m):	101 dB SPL (125 Hz to 10 kHz 1/3 octave bands) 101 dB SPL (250 Hz to 4 kHz speech range)
Maximum Output:	124 dB SPL / 131 dB SPL (peak)
Nominal Impedance:	8 ohms
Minimum Impedance:	4.2 ohms @ 9.5 kHz
Nominal -6dB Beamwidth:	90° H (+2° / -43°, 1.6 kHz to 12.5 kHz) 90° V (+6° / -46°, 1.6 kHz to 12.5 kHz)
Axial Q / DI:	13.6 / 11.3, 1.6 kHz to 10 kHz
Crossover Frequency:	2 kHz
Recommended Signal Processing:	90 Hz high pass filter
Drivers:	LF (1) 12" Ferrofluid-cooled HF (1) 1" exit, titanium free, Ferrofluid-cooled
Driver Protection:	DYNA-TECH
Input Connection:	12 foot (4 m) SJOW #16 gauge
Controls:	None
Enclosure:	Rotomolded LLDPE, light grey
Mounting/Rigging Provisions:	(5) 3/8-16 rigging points
Grille:	3-layer WeatherStop™, light grey (Zinc-rich epoxy dual-layer powder coated perforated steel grille, foam, woven poly mesh)
Environmental Performance:	IEC529 IP55W rating with a minimum 5-degree downward aiming angle
Required Accessories:	24 dB/Oct high pass filter
Supplied Accessories:	(1) Yoke bracket, light grey (1) Aiming strap
Optional Accessories:	PMB Series pole mount brackets
Dimensions—Height:	16 inches (406.4 mm)
Width:	16 inches (406.4 mm)
Depth:	15.94 inches (404.88 mm)
Weight:	35 lbs (15.9 kg)
Shipping Weight:	40 lbs (18.14 kg)



APPLICATIONS

- Fill speaker for stadia, athletic fields, arenas and race tracks
- Convention centers
- Outdoor background music / paging systems
- Theme and amusement parks
- Fairgrounds, rodeos, air shows
- Malls, cruise ships, skating rinks
- Swimming pools
- Portable sound systems

FEATURES

- Weather-resistant, rotomolded UV enclosure
- Weather-treated drivers and crossovers
- Corrosion-resistant zinc-rich epoxy dual-layer powder coated steel grille and yoke
- Pattern control down to 630 Hz
- High efficiency
- Integral mounting points
- High power passive crossover
- DYNA-TECH protection circuitry

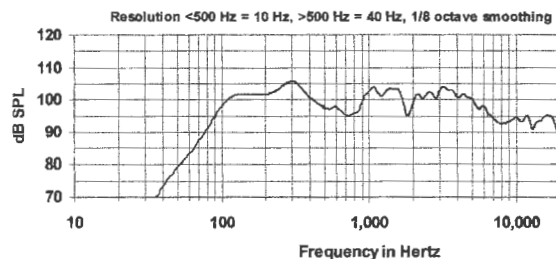
DESCRIPTION

The R.5-99Z two-way, full-range loudspeaker system is engineered to provide quality full-range sound projection in a variety of outdoor and indoor applications. Its wide range, smooth frequency response and high efficiency ensure both high fidelity music reproduction and superb projection of clear intelligible speech with very low distortion. Five-year limited product warranty; fifteen-year enclosure warranty.

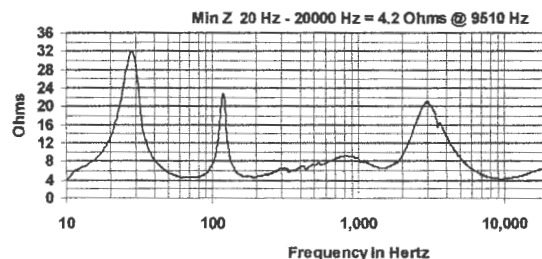
NOTES:

1. Sensitivity: Free field pink noise measurement at 40 ft (12.2 m) at 60% power; extrapolated to 1 meter and an input of 2.83 volts RMS.
2. Watts: All wattage figures are calculated using the rated nominal impedance.

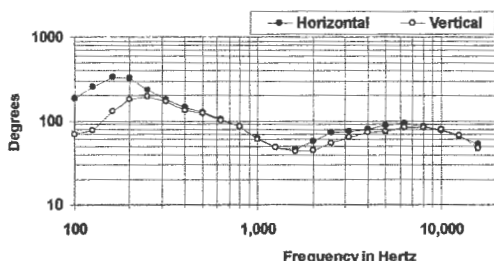
FREQUENCY RESPONSE



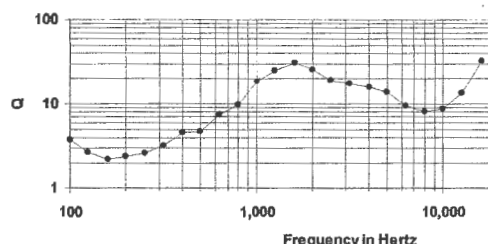
IMPEDANCE



BEAMWIDTH



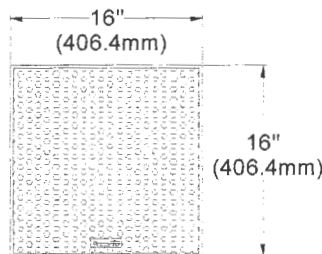
AXIAL Q



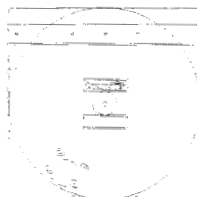
DIMENSIONS



SIDE VIEW

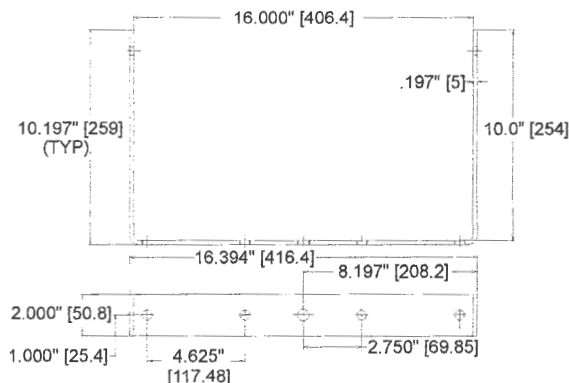


FRONT VIEW



REAR VIEW

R.5 YOKE



ARCHITECTURAL SPECIFICATIONS

The loudspeaker system shall be a horn-loaded, two-way, coaxial design consisting of one 12" Ferrofluid-cooled driver and one 1" exit, titanium free, Ferrofluid-cooled compression driver mounted on a horn inside the cabinet. The drivers shall be connected to a passive crossover network with a crossover frequency at 2 kHz with driver protection using DYNA-TECH protection circuitry. The cabinet shall be a rotomolded linear low density polyethylene enclosure providing weather and UV resistance with a three-layer weather resistant grille. The steel grille shall be powder coated with a proprietary zinc-rich epoxy dual-layer powder coating process in light grey to color match the enclosure. The system shall have an IEC529 IP rating of IP55W with a minimum 5-degree downward aiming angle. The input connection shall be one 12' (4m) SJOW #16 gauge cable with stripped ends. The enclosure shall incorporate five 3/8-16 rigging points for multiple mounting options. In addition, the loudspeaker will be supplied with one zinc-rich epoxy dual-layer powder coated steel yoke bracket. The loudspeaker system shall have an amplitude response of 85 Hz to 16 kHz (+/- 5 dB SPL), an input capacity of 40V RMS, 101 dB SPL sensitivity @ 2.83V / 1 meter between 250 Hz to 4 kHz at a nominal 8 ohm impedance. The nominal dispersion shall be 90° x 90° over a frequency range of 1.6 kHz to 12.5 kHz. The dimensions of the enclosure are defined as 16" x 16" x 16" (HWD) at a weight of 35 lbs.

Community strives to improve its products on a continual basis. Specifications are therefore subject to change without notice.

DATE: August 23, 2013

PR #: Fourteen (14)

TO: David Beiersdorfer Jr.
Endeavor Construction
977 State Route 28
Milford, Ohio 45150

RE: Gallatin Co. Alternative School & Field House
Gallatin County, Kentucky
BG 12-133
RTA 0914

Please submit an itemized quotation for changes in the Contract Sum and/or Time incidental to proposed modifications to the Contract Documents described therein.

THIS IS NOT A CHANGE ORDER NOR A DIRECTION TO PROCEED WITH THE WORK DESCRIBED HEREIN.

DESCRIPTION: Provide a proposal for adjusting the speakers at the Football press box.

Provide a material pricing adjustment to change the Community R2.0 speakers to the Community R0.5 speakers as recommended by American Sound, requested by the Owner, and reviewed by CMTA.

ATTACHMENTS: None

BY: John C. Gilbert, Assoc. AIA, LEED AP

c: Dorothy Perkins, Gallatin Co. Schools
Lenny Whalen, Gallatin Co. Schools
Ronald E. Murrell, Jr., AIA, LEED AP BD+C
Steve Maggard, PE
Greg Hosfield, AIA, LEED BD+C
Jeremy Lewis, CMTA
File 0914-4B2
PR 13-0914

KENTUCKY DEPARTMENT OF EDUCATION
DIVISION OF FACILITIES MANAGEMENT

CHANGE ORDER SUPPLEMENTAL
INFORMATION FORM

702 KAR 4:160

(Supplement to AIA G701 and G701/CMA Change Order Forms)

District	<u>Gallatin County</u>	District Code	<u>191</u>	Facility Name	<u>Alternative School / Field House</u>	School Code	<u></u>
BG #	<u>12-133</u>	Project	<u>Alternative School / Fieldhouse</u>	Contract / Bid Package	<u>Endeavor</u>		
Original Contract Sum		\$	<u>3,493,000.00</u>	Change Order Number:	<u>13</u>		
Requested Change Order Amount		\$	<u>-2,085.34</u>	Time Extension Required:	<input type="checkbox"/> Yes <input checked="" type="checkbox"/> No		

NOTE: All change orders shall be submitted with complete cost breakdown including materials, labor, overhead and profit, and any other descriptive drawings and information.

Contract change requested by:

<input checked="" type="checkbox"/> Local Board of Education	<input checked="" type="checkbox"/> General Contractor
<input checked="" type="checkbox"/> Architect/Engineer	<input type="checkbox"/> Construction Manager
<input type="checkbox"/> Code Enforcement Official	<input type="checkbox"/> Other: <u></u>

Change Order Description and Justification:

Contractor is adjusting the type of speaker as recommended and requested.

Cost Benefit to Owner:

Occuring while other work is being performed by the Contractor for similar work.

Have contract unit prices been utilized to support the cost associated with this change order?

☐ Yes ☒ No

Is the cost for this change order supported by an alternate bid or competitive price quote(s)?

☐ Yes ☒ No

Does this Change Order affect the total Architect/Engineer design fee for this project?

☐ Yes ☒ No

Current A/E Contract Amount	\$	<u>NA</u>
Fee Amount for this Change:	\$	<u>NA</u>
New A/E Contract Amount:	\$	<u>NA</u>

Board of Education Designee Signature

Date

Attach additional pages if necessary.