

Superintendent's Report

Monday, March 25, 2013

**Donna M. Hargens, Ed.D.
Superintendent
Jefferson County Public Schools**

Unbridled Learning Model

JCPS District– 2012

Total Weighted Score: 50.8

Level	Achievement Weight	Gap Weight	Growth Weight	Readiness Weight	Graduation Weight
Elementary	30	30	40	0	0
Middle	28	28	28	16	0
High	20	20	20	20	20
District	26	26	29	12	7

Graduation Rate (7%)

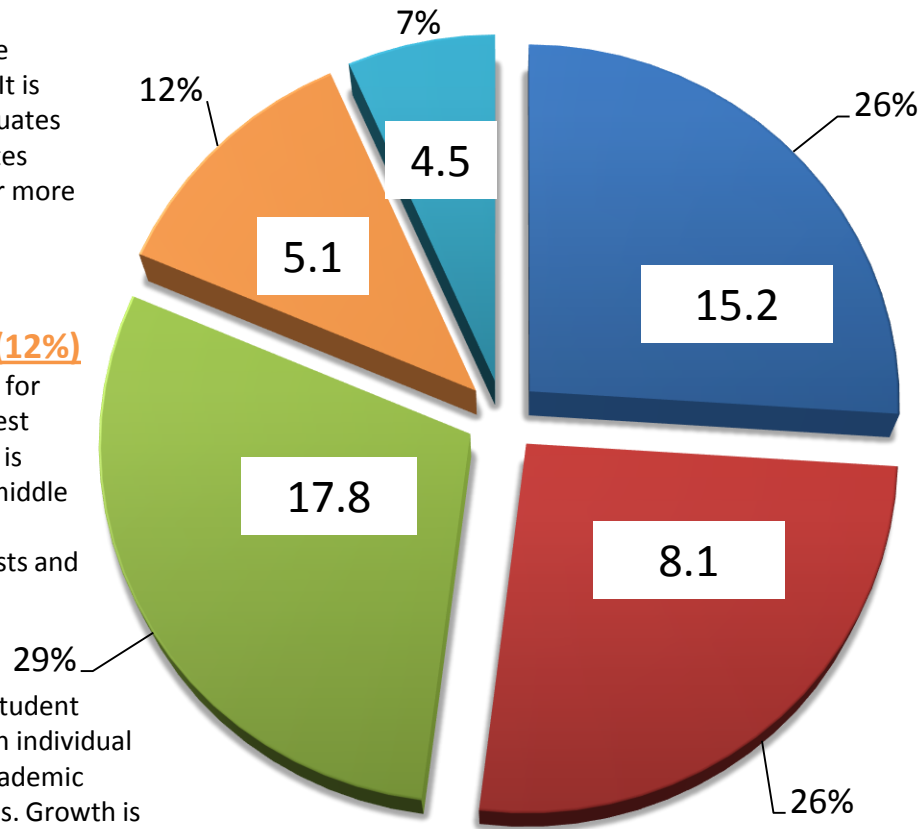
Percent of students who graduate within four years of high school. It is calculated as the number of graduates with diploma in 4 years + graduates with diploma but IEP allowed 4 or more years divided by the 9th grade membership 07-08 + 10th grade membership 08-09 divided by 2.

College/Career Readiness (12%)

Percent of students who are ready for college and/or careers, based on test scores and certifications earned. It is measured by EXPLORE scores for middle school and at the high school ACT benchmarks, college placement tests and career measures.

Growth (29%)

A statistical program generates a Student Growth Percentile by comparing an individual student's score to the student's academic peers using two years of test scores. Growth is reported for reading and mathematics in grades 4 through 8 and at grade 11.



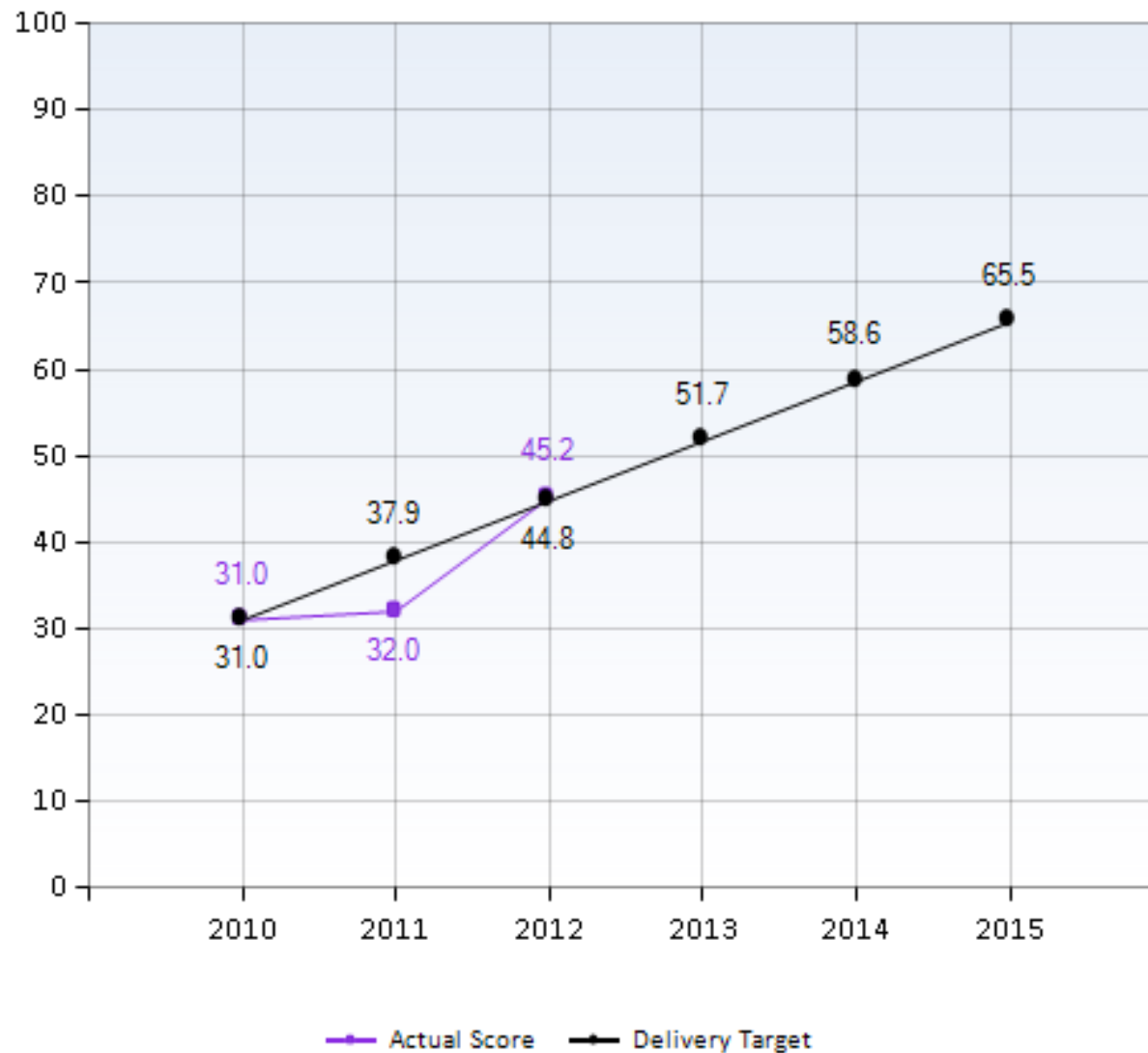
Achievement (26%)

Student performance in the five content areas of reading, mathematics, science, social studies and writing (on-demand and language—editing and mechanics). A formula awards points based on the student performance levels of Novice, Apprentice, Proficient and Distinguished (NAPD).

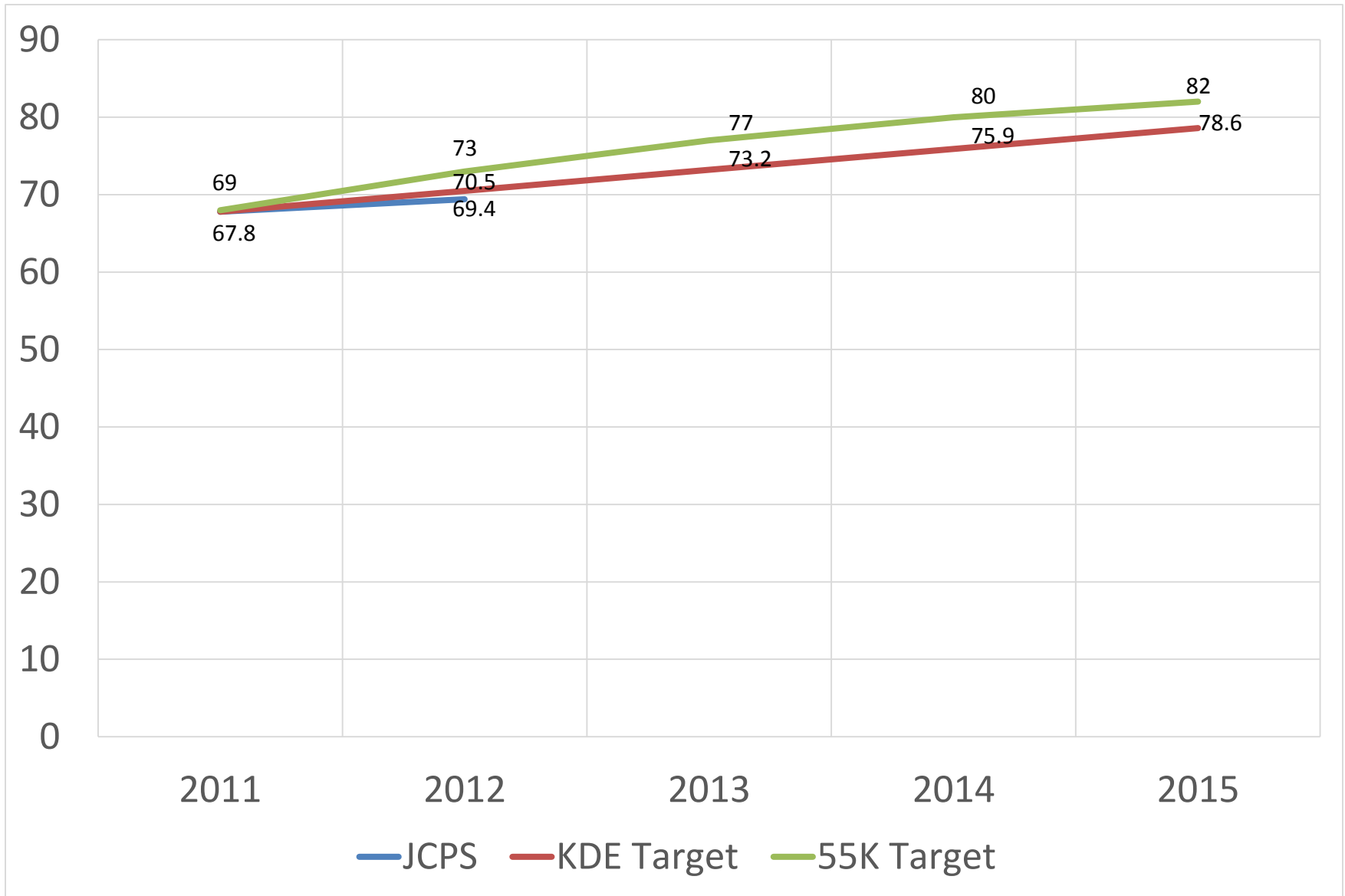
Gap (26%)

A single student gap group that includes students with membership in the following groups as required by federal guidelines: African-American, Hispanic, Native American, students with disabilities, poverty (qualified for free or reduced price lunch) and limited English proficient.

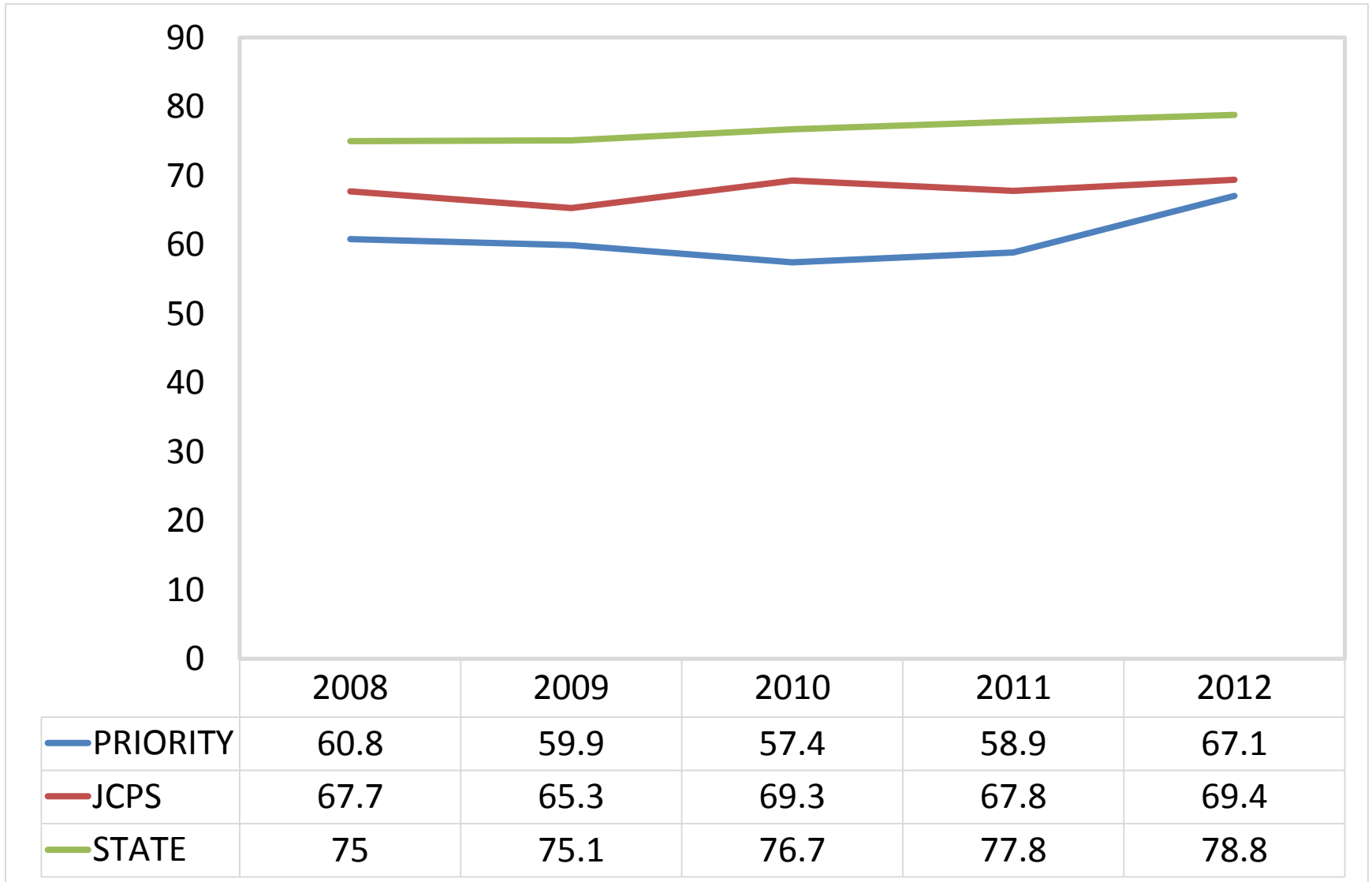
JCPS College and Career Readiness Targets



JCPS Graduation Rate Targets



Graduation Trend Data: 2008-2012



JCPS Graduation Rates

School Name	2008	2009	2010	2011	2012	AFGR GOAL	MET
Atherton High School	79.7	69.2	73.8	71.1	74.7	73.5	YES
Ballard High	91.1	85.9	82.3	78.2	90.7	80.0	YES
Brown School	NA	89.9	88.2	80.9	89.7	82.5	YES
Butler Traditional High School	89.1	81.9	87.9	81.5	83.0	83.0	YES
Central High School	80.6	79.3	77.1	75.8	86.7	77.8	YES
Doss High	64.8	64.1	60.9	59.5	70.0	63.0	YES
Dupont Manual High	92.8	95.0	92.0	91.9	96.0	92.5	YES
Eastern High	76.7	78.6	71.3	67.0	74.8	69.8	YES
Fairdale High School	68.7	71.1	62.1	76.5	71.9	78.5	NO
Fern Creek Traditional High	62.2	65.8	64.6	67.4	78.5	70.2	YES
Iroquois High	49.5	48.3	40.5	40.1	46.8	45.4	YES
Jeffersontown High School	65.1	60.3	62.4	69.1	59.7	71.7	NO
Louisville Male High School	85	84.7	83.5	84.7	84.1	85.9	NO
Moore Traditional School	57.1	50.5	62.1	52.8	62.3	56.9	YES
Pleasure Ridge Park High	70.5	71.1	72.2	70.3	66.8	72.8	NO
Seneca High	69.4	68.9	64.9	59.7	66.8	63.2	YES
Southern High School	60.8	62.7	61.9	61.3	68.8	64.6	YES
The Academy @ Shawnee	52.6	44.8	47.2	42.3	58.9	47.4	YES
Valley High School	45.1	49.8	52.6	52.4	69.7	56.5	YES
Waggener High School	61.8	54.2	59.2	59.1	73.5	62.6	YES
Western High School	67.9	60.3	52.5	68.3	66.9	71.0	NO
Priority School Total	60.8	59.9	57.4	58.9	67.1		
DISTRICT TOTAL	67.7	65.3	69.3	67.8	69.4	70.5	NO
STATE TOTAL	75	75.1	76.7	77.8	78.8	79.6	NO

Planning & Program Evaluation



[District Planning \(CDIP\)](#)

[School Planning \(CSIP\)](#)

[Planning Budgets](#)

[Planning Tools](#)

[Program Evaluation](#)

[Planning & Evaluation](#)

[Data Management](#)

[Transformation Zone](#)

CDIP Links ▼

JCPS Transformation Zone

JCPS has identified priority schools and schools that have the potential to become priority schools under the Kentucky Accountability System. Each of these schools receive differentiated support from district staff and Assistant Superintendents. These schools are given special emphasis, support and attention when the district makes decisions and assigns resources in order to foster success.

JCPS Trend Data:

- [Priority School Data](#)
- [Watch List School Data](#)
- [Summary of Key Indicators](#)
- [School Delivery Targets](#)



JCPS Comprehensive School Improvement Plans:

Priority School CSIPs 2012-13 ▼

Watch List School CSIPs 2012-13 ▼

JCPS Priority Schools' 30-60-90 Day Plans:

Priority Schools' 30-60-90 Day Plans ▼

JCPS Priority Schools' Interventions:

- [Intervention Plan for February Break 2013](#)

Leadership Assessment Reports:

School Leadership Assessment Reports 2009-10 ▼

Number of Schools Making Gains in Key Indicators

Key Indicators	Priority Schools: Gains from Baseline Year	Priority Schools: Gains from Last Year	Watch List Schools: Gains from Last Year
EXPLORE % Meeting English Benchmark	7 of 8	6 of 8	2 of 2
EXPLORE % Meeting Math Benchmark	3 of 8	5 of 8	2 of 2
EXPLORE % Meeting Reading Benchmark	2 of 8	2 of 8	1 of 2
EXPLORE Composite Score	5 of 8	5 of 8	2 of 2
PLAN % Meeting English Benchmark	6 of 10	7 of 10	NA
PLAN % Meeting Math Benchmark	3 of 10	1 of 10	NA
PLAN % Meeting Reading Benchmark	4 of 10	2 of 10	NA
PLAN Composite Score	5 of 10	4 of 10	NA
ACT % Meeting English Benchmark	5 of 10	6 of 10	NA
ACT % Meeting Math Benchmark	6 of 10	5 of 10	NA
ACT % Meeting Reading Benchmark	3 of 10	6 of 10	NA
ACT Composite Score	5 of 10	5 of 10	NA
Retention Rate	3 of 18	1 of 18	9 of 14
Student Attendance	14 of 18	8 of 18	8 of 14
Students Enrolled in at least 1 AP course	6 of 10	6 of 10	NA
College/Career Readiness	6 of 6	10 of 10	NA
Dropout Rate	5 of 10	1 of 10	NA
Graduation Rate	10 of 10	8 of 10	NA
% Students Enrolled in College (NSC)	5 of 10	6 of 10	NA

Green cells represent 50% or more of the schools making progress