

NOTES:

1) THIS EASEMENT PLAT IS BASED ON FIELD WORK PERFORMED FROM 04/06/2011 TO 06/29/2011 BY CONVENTIONAL RADIAL SURVEY METHODS UTILIZING AN ELECTRONIC TOTAL STATION AND TIED INTO CONTROL WHICH WAS SET BY RTK GPS METHODS.






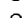

2) THE MONUMENTED CORNERS SHOWN HEREON ARE NOT VERIFIED AS BOUNDARY CORNERS AND SHOULD BE USED AS REFERENCE TIES FOR THE EASEMENT ONLY.

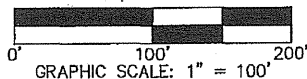
3) THE MEASUREMENTS MADE TO LOCATE THE CONTROL AND PROPERTY CORNER MONUMENTS SHOWN HEREON MEET OR EXCEED THE RELATIVE POSITIONAL ACCURACY FOR AN "URBAN" CLASS SURVEY ($\pm 0.05' + 100$ PPM) AS DEFINED BY 201 KAR 18:150.

4) THE REFERENCE MERIDIAN USED ON THIS EASEMENT PLAT TO DETERMINE THE DIRECTION OF THE EASEMENT LINES WAS BASED ON THE KENTUCKY STATE PLANE COORDINATE SYSTEM, NORTH ZONE (NAD 1983).

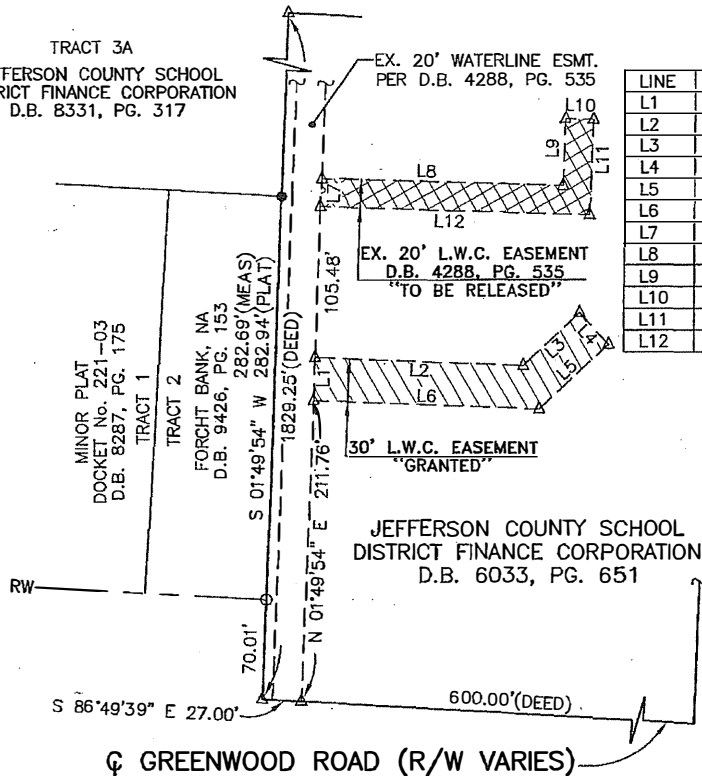
5) THIS PLAN WAS PREPARED WITHOUT THE BENEFIT OF TITLE EXAMINATION. AN ABSTRACT OF TITLE OR TITLE COMMITMENT MAY REVEAL EASEMENTS, RIGHTS-OF-WAYS, ENCUMBRANCES, RESTRICTIONS OR RIGHTS OF OTHERS THAT ARE NOT SHOWN HEREON.

LEGEND

-  EASEMENT AREA
-  EASEMENT RELEASE AREA
-  CENTERLINE
-  R/W RIGHT-OF-WAY
-  STEEL PIN
-  IRON PIPE
-  DIMENSION POINTS

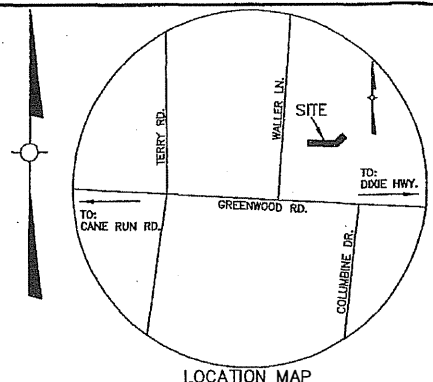


TRACT 3A
JEFFERSON COUNTY SCHOOL
DISTRICT FINANCE CORPORATION
D.B. 8331, PG. 317



LINE TABLE

LINE	BEARING	DISTANCE
L1	N 01°49'54" E	30.00'
L2	S 87°47'34" E	145.67'
L3	N 47°12'26" E	54.13'
L4	S 42°47'34" E	30.00'
L5	S 47°12'26" W	66.56'
L6	N 87°47'34" W	157.90'
L7	N 01°49'54" E	20.00'
L8	S 88°10'06" E	169.00'
L9	N 01°49'54" E	47.00'
L10	S 88°10'06" E	20.00'
L11	S 01°49'54" W	67.00'
L12	N 88°10'06" W	189.00'



LOCATION MAP
NOT TO SCALE

EASEMENT AREA = 6,364 SQ. FT.

L.W.C. EASEMENT #

EASEMENT AREA (RELEASE) = 4,720 SQ. FT.

L.W.C. EASEMENT #747

**LOUISVILLE WATER COMPANY
EASEMENT AND RELEASE OF EASEMENT**

PLAT PREPARED BY:
JACOBI, TOOMBS, & LANZ, INC.
1400 SOUTH 1st STREET, LOUISVILLE, KY 40208

THIS DRAWING DOES NOT REPRESENT A BOUNDARY SURVEY AND IS NOT INTENDED FOR LAND TRANSFER.

LOUISVILLE WATER COMPANY

550 S. 3RD STREET - LOUISVILLE, KENTUCKY 40202

GREGORY C. HEITZMAN - PRESIDENT

JAMES H. BRAMMELL, PE, PLS - VICE PRESIDENT, CHIEF ENGINEER

PROPERTY OF:

**JEFFERSON COUNTY SCHOOL
DISTRICT FINANCE CORPORATION**

5901 GREENWOOD ROAD
LOUISVILLE, KY 40258

D.B. 6033, PG. 651

JEFFERSON COUNTY

TAX BLOCK 1030 LOT 31

DATE	11-07-12	SCALE	1" = 100'	MAP NO.	1176-238
DRAWN	E.T.R.	CHK'D BY	R.A.G.	ENGR.	J. LONG
PROJ. NO.	13437	SHEET		1 of 1	

I hereby certify that this easement plat was made under my supervision and is correct to the best of my knowledge and belief. This survey meets or exceeds the minimum standards pertaining to non-boundary survey work located in Section 13 of 201 KAR 18:150, as well as, the LWC Technical Specifications and Standard Drawings for Surveying, Platting and Mapping, 2011 Edition.

SURVEYOR: _____ DATE: _____

JOB #11033 DWG: S:\EP2002\PROJECTS\11033\EASEMENTS\11033 PRP WATERLINE ESMT