



AIA Document G731™ – 2019

Change Order, Construction Manager as Adviser Edition

PROJECT: (name and address)

Christian County High School
5185 Fort Campbell Blvd
Hopkinsville, KY 42240

OWNER: (name and address)

Christian County Board of Education
200 Glass Avenue Hopkinsville, KY 42240

CONTRACTOR: (name and address)

Kalkreuth Roofing & Sheet Metal
2131 Capstone Drive Lexington, KY 40511

CONTRACT INFORMATION:

Contract For: BP 074 -03 Roofing
Date: September 08, 2023

CHANGE ORDER INFORMATION:

Change Order Number: 081
Date: August 27, 2025

ARCHITECT: (name and address)

Hafer PSC
101 E. Second Street, Suite 101 Owensboro, KY 42303

CONSTRUCTION MANAGER: (name and address)

Alliance Corporation
116 E. College Street
Glasgow, KY 42141

THE CONTRACT IS CHANGED AS FOLLOWS:

(Insert a detailed description of the change and, if applicable, attach or reference specific exhibits. Also include agreed upon adjustments attributable to executed Construction Change Directives.)

Cost associated with metal coping per PR #49 North Dumpster Enclosure.

The original Contract Sum was	\$ 4,528,590.00
Net change by previously authorized Change Orders	\$ 28,922.34
The Contract Sum prior to this Change Order was	\$ 4,557,512.34
The Contract Sum will be increased by this Change Order in the amount of	\$ 3,311.86
The new Contract Sum including this Change Order will be	\$ 4,560,824.20

The Contract time will be unchanged by Zero(0) days.

The Contractor's Work shall be substantially complete on .

NOTE: This Change Order does not include adjustments to the Contract Sum or Guaranteed Maximum Price, or the Contract Time, that have been authorized by Construction Change Directive until the cost and time have been agreed upon by both the Owner and Contractor, in which case a Change Order is executed to supersede the Construction Change Directive.

NOT VALID UNTIL SIGNED BY THE ARCHITECT, CONSTRUCTION MANAGER, CONTRACTOR, AND OWNER.

ARCHITECT (Signature)

BY: Eric Rang, Hafer PSC

(Printed name, title, and license number if required)

Date

CONSTRUCTION MANAGER (Signature)

BY: Kevin Hitchel, Alliance Corporation

(Printed name and title)

Date

CONTRACTOR (Signature)

BY: Joe Minor, Kalkreuth Roofing & Sheet Metal

(Printed name and title)

Date

OWNER (Signature)

BY: Christopher Bentzel, Christian County Board of Education

(Printed name and title)

Date



PROPOSED CHANGE ORDER

PROJECT Christian County High School

CONTRACTOR/SUPPLIER Kalkreuth Roofing

BID PACKAGE 074 81.) 074-03

DETAIL ITEM	AMOUNT
-------------	--------

LABOR	\$ 1,333.05
MATERIALS	\$ 1,490.36
PROFIT & OVERHEAD	\$ 423.51
BOND INSURANCE	\$ 64.94
COST BREAKDOWN TOTAL	\$ 3,311.86

DESCRIPTION

Metal coping per PR #49 North Dumpster Enclosure

PR # 49 (ATTACH PR)

CHANGE ORDER INITIATED BY:

ARCHITECT/ENGINEER

☒ OWNER

CONTRACTOR

CM

CODE OFFICIAL

OTHER _____

PLEASE INCLUDE THIS FORM WITH EVERY
CHANGE ORDER.

PROPOSAL REQUEST

Project:	Christian County High School 5185 Ft. Campbell Blvd Hopkinsville, KY 42240	PR No.:	049
		Date:	July 10, 2025
Owner:	Christian County Public Schools 222 Glass Ave Hopkinsville, KY 42240	Project Number:	2106-204
		Contract for:	Mason, General, Civil, Steel
To:	Kevin Hitchell Alliance Corporation 116 E. College Steet Glasgow, KY 42141		
RE:	North Dumpster Enclsoure		

Please submit an itemized quotation for changes in the Contract Sum and/or Time incidental to proposed modifications to the Contract Documents described herein.
THIS IS NOT A CHANGE ORDER NOR A DIRECTION TO PROCEED WITH THE WORK DESCRIBED HEREIN.

Description:

1. Provide a price to construct dumpster enclosure as shown on A1.1D, and modify parking lot surface to provide concrete pad as shown on attached civil drawings.

Attachments: A1.1D, C3.01, C3.1, C4.1

By: Eric Rang, Rick Harper

CC: Steve Harding, Jason Wilson



406 E. 3rd St. Ste. 104
Hopkinsville, KY 40516

1845 FT. CAMPBELL BLVD
HOPKINSVILLE, KY 40516

HAFER
1111 1st St. Ste. 100
Hopkinsville, KY 40516
Phone: 248-1111
Fax: 248-1111



1111 1st St. Ste. 100
Hopkinsville, KY 40516
Phone: 248-1111
Fax: 248-1111

1111 1st St. Ste. 100
Hopkinsville, KY 40516
Phone: 248-1111
Fax: 248-1111

1111 1st St. Ste. 100
Hopkinsville, KY 40516
Phone: 248-1111
Fax: 248-1111

1111 1st St. Ste. 100
Hopkinsville, KY 40516
Phone: 248-1111
Fax: 248-1111

1111 1st St. Ste. 100
Hopkinsville, KY 40516
Phone: 248-1111
Fax: 248-1111

1111 1st St. Ste. 100
Hopkinsville, KY 40516
Phone: 248-1111
Fax: 248-1111

1111 1st St. Ste. 100
Hopkinsville, KY 40516
Phone: 248-1111
Fax: 248-1111

1111 1st St. Ste. 100
Hopkinsville, KY 40516
Phone: 248-1111
Fax: 248-1111

1111 1st St. Ste. 100
Hopkinsville, KY 40516
Phone: 248-1111
Fax: 248-1111

1111 1st St. Ste. 100
Hopkinsville, KY 40516
Phone: 248-1111
Fax: 248-1111

1111 1st St. Ste. 100
Hopkinsville, KY 40516
Phone: 248-1111
Fax: 248-1111

1111 1st St. Ste. 100
Hopkinsville, KY 40516
Phone: 248-1111
Fax: 248-1111

1111 1st St. Ste. 100
Hopkinsville, KY 40516
Phone: 248-1111
Fax: 248-1111

1111 1st St. Ste. 100
Hopkinsville, KY 40516
Phone: 248-1111
Fax: 248-1111

1111 1st St. Ste. 100
Hopkinsville, KY 40516
Phone: 248-1111
Fax: 248-1111

1111 1st St. Ste. 100
Hopkinsville, KY 40516
Phone: 248-1111
Fax: 248-1111

1111 1st St. Ste. 100
Hopkinsville, KY 40516
Phone: 248-1111
Fax: 248-1111

1111 1st St. Ste. 100
Hopkinsville, KY 40516
Phone: 248-1111
Fax: 248-1111

1111 1st St. Ste. 100
Hopkinsville, KY 40516
Phone: 248-1111
Fax: 248-1111

1111 1st St. Ste. 100
Hopkinsville, KY 40516
Phone: 248-1111
Fax: 248-1111

1111 1st St. Ste. 100
Hopkinsville, KY 40516
Phone: 248-1111
Fax: 248-1111

1111 1st St. Ste. 100
Hopkinsville, KY 40516
Phone: 248-1111
Fax: 248-1111

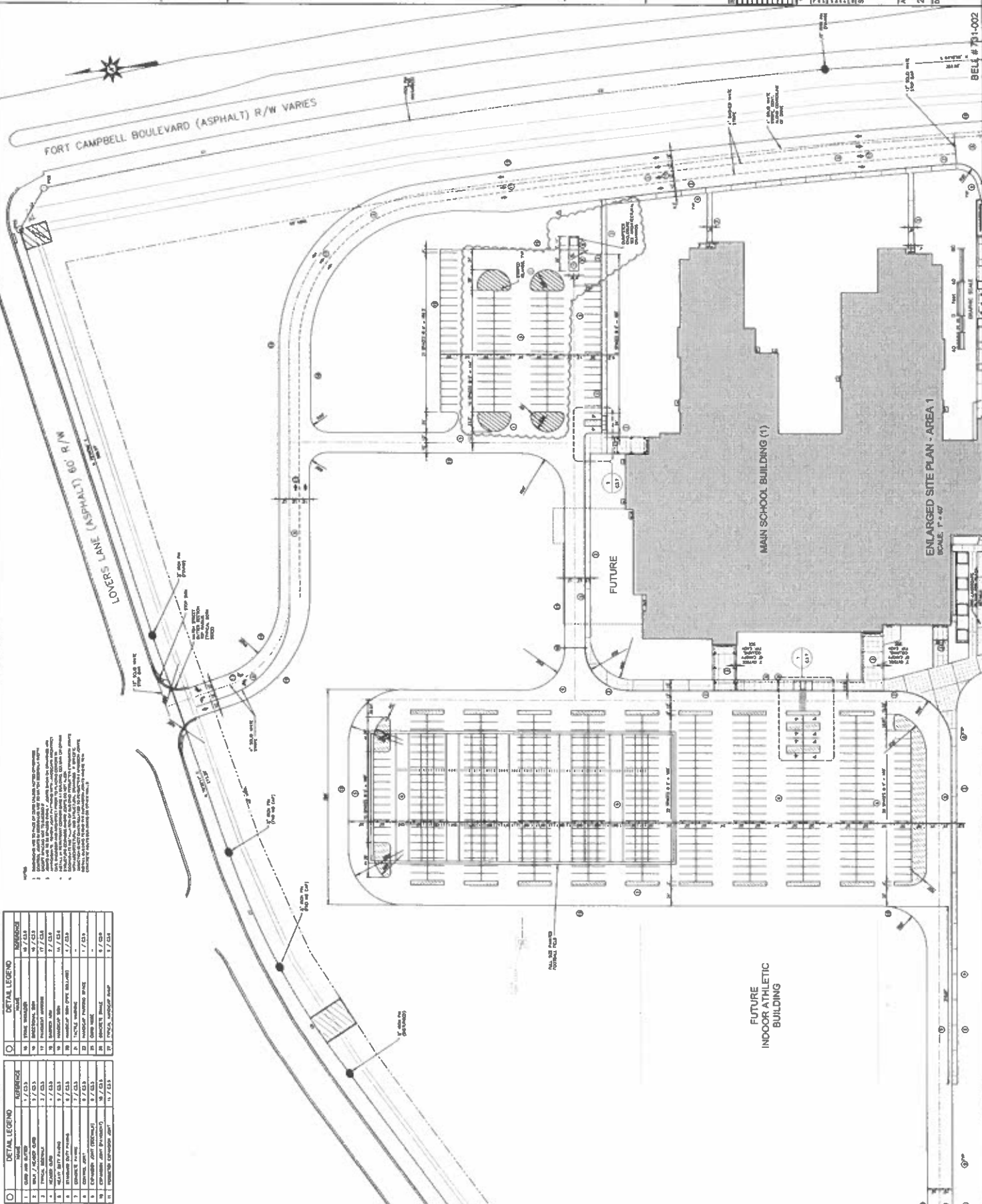
1111 1st St. Ste. 100
Hopkinsville, KY 40516
Phone: 248-1111
Fax: 248-1111

1111 1st St. Ste. 100
Hopkinsville, KY 40516
Phone: 248-1111
Fax: 248-1111

1111 1st St. Ste. 100
Hopkinsville, KY 40516
Phone: 248-1111
Fax: 248-1111

1111 1st St. Ste. 100
Hopkinsville, KY 40516
Phone: 248-1111
Fax: 248-1111

DETAIL LEGEND	REVISIONS
1. GROUND SURVEY	1 / 12/13
2. GRADE / ROAD CLOSURE	2 / 12/13
3. TRUCK / TRAILER	3 / 12/13
4. TRUCK / TRAILER	4 / 12/13
5. TRUCK / TRAILER	5 / 12/13
6. TRUCK / TRAILER	6 / 12/13
7. TRUCK / TRAILER	7 / 12/13
8. TRUCK / TRAILER	8 / 12/13
9. TRUCK / TRAILER	9 / 12/13
10. TRUCK / TRAILER	10 / 12/13
11. TRUCK / TRAILER	11 / 12/13
12. TRUCK / TRAILER	12 / 12/13
13. TRUCK / TRAILER	13 / 12/13
14. TRUCK / TRAILER	14 / 12/13
15. TRUCK / TRAILER	15 / 12/13
16. TRUCK / TRAILER	16 / 12/13
17. TRUCK / TRAILER	17 / 12/13
18. TRUCK / TRAILER	18 / 12/13
19. TRUCK / TRAILER	19 / 12/13
20. TRUCK / TRAILER	20 / 12/13
21. TRUCK / TRAILER	21 / 12/13
22. TRUCK / TRAILER	22 / 12/13
23. TRUCK / TRAILER	23 / 12/13
24. TRUCK / TRAILER	24 / 12/13
25. TRUCK / TRAILER	25 / 12/13
26. TRUCK / TRAILER	26 / 12/13
27. TRUCK / TRAILER	27 / 12/13
28. TRUCK / TRAILER	28 / 12/13
29. TRUCK / TRAILER	29 / 12/13
30. TRUCK / TRAILER	30 / 12/13
31. TRUCK / TRAILER	31 / 12/13
32. TRUCK / TRAILER	32 / 12/13
33. TRUCK / TRAILER	33 / 12/13
34. TRUCK / TRAILER	34 / 12/13
35. TRUCK / TRAILER	35 / 12/13
36. TRUCK / TRAILER	36 / 12/13
37. TRUCK / TRAILER	37 / 12/13
38. TRUCK / TRAILER	38 / 12/13
39. TRUCK / TRAILER	39 / 12/13
40. TRUCK / TRAILER	40 / 12/13
41. TRUCK / TRAILER	41 / 12/13
42. TRUCK / TRAILER	42 / 12/13
43. TRUCK / TRAILER	43 / 12/13
44. TRUCK / TRAILER	44 / 12/13
45. TRUCK / TRAILER	45 / 12/13
46. TRUCK / TRAILER	46 / 12/13
47. TRUCK / TRAILER	47 / 12/13
48. TRUCK / TRAILER	48 / 12/13
49. TRUCK / TRAILER	49 / 12/13
50. TRUCK / TRAILER	50 / 12/13
51. TRUCK / TRAILER	51 / 12/13
52. TRUCK / TRAILER	52 / 12/13
53. TRUCK / TRAILER	53 / 12/13
54. TRUCK / TRAILER	54 / 12/13
55. TRUCK / TRAILER	55 / 12/13
56. TRUCK / TRAILER	56 / 12/13
57. TRUCK / TRAILER	57 / 12/13
58. TRUCK / TRAILER	58 / 12/13
59. TRUCK / TRAILER	59 / 12/13
60. TRUCK / TRAILER	60 / 12/13
61. TRUCK / TRAILER	61 / 12/13
62. TRUCK / TRAILER	62 / 12/13
63. TRUCK / TRAILER	63 / 12/13
64. TRUCK / TRAILER	64 / 12/13
65. TRUCK / TRAILER	65 / 12/13
66. TRUCK / TRAILER	66 / 12/13
67. TRUCK / TRAILER	67 / 12/13
68. TRUCK / TRAILER	68 / 12/13
69. TRUCK / TRAILER	69 / 12/13
70. TRUCK / TRAILER	70 / 12/13
71. TRUCK / TRAILER	71 / 12/13
72. TRUCK / TRAILER	72 / 12/13
73. TRUCK / TRAILER	73 / 12/13
74. TRUCK / TRAILER	74 / 12/13
75. TRUCK / TRAILER	75 / 12/13
76. TRUCK / TRAILER	76 / 12/13
77. TRUCK / TRAILER	77 / 12/13
78. TRUCK / TRAILER	78 / 12/13
79. TRUCK / TRAILER	79 / 12/13
80. TRUCK / TRAILER	80 / 12/13
81. TRUCK / TRAILER	81 / 12/13
82. TRUCK / TRAILER	82 / 12/13
83. TRUCK / TRAILER	83 / 12/13
84. TRUCK / TRAILER	84 / 12/13
85. TRUCK / TRAILER	85 / 12/13
86. TRUCK / TRAILER	86 / 12/13
87. TRUCK / TRAILER	87 / 12/13
88. TRUCK / TRAILER	88 / 12/13
89. TRUCK / TRAILER	89 / 12/13
90. TRUCK / TRAILER	90 / 12/13
91. TRUCK / TRAILER	91 / 12/13
92. TRUCK / TRAILER	92 / 12/13
93. TRUCK / TRAILER	93 / 12/13
94. TRUCK / TRAILER	94 / 12/13
95. TRUCK / TRAILER	95 / 12/13
96. TRUCK / TRAILER	96 / 12/13
97. TRUCK / TRAILER	97 / 12/13
98. TRUCK / TRAILER	98 / 12/13
99. TRUCK / TRAILER	99 / 12/13
100. TRUCK / TRAILER	100 / 12/13



C3.1

2106-201 May, 202

2106-201 May, 202

2106-201 May, 202

2106-201 May, 202

2106-201 May, 202

2106-201 May, 202

2106-201 May, 202

2106-201 May, 202

2106-201 May, 202

2106-201 May, 202

2106-201 May, 202

2106-201 May, 202

2106-201 May, 202

2106-201 May, 202

2106-201 May, 202

2106-201 May, 202

2106-201 May, 202

2106-201 May, 202

2106-201 May, 202

2106-201 May, 202

2106-201 May, 202

2106-201 May, 202

2106-201 May, 202

2106-201 May, 202

2106-201 May, 202

2106-201 May, 202

2106-201 May, 202

2106-201 May, 202

2106-201 May, 202

2106-201 May, 202

2106-201 May, 202



405 E. 30th St.
Hopkinsville, KY 40520

405 E. 30th St.
Hopkinsville, KY 40520

HAFFER
1000 N. 10th St.
Hopkinsville, KY 40520
Phone: 248-1111
Fax: 248-1112



ALLIANCE
1000 N. 10th St.
Hopkinsville, KY 40520
Phone: 248-1111
Fax: 248-1112



BELL
1000 N. 10th St.
Hopkinsville, KY 40520
Phone: 248-1111
Fax: 248-1112



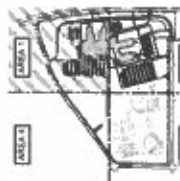
K&S ENGINEERING, P.C.
1000 N. 10th St.
Hopkinsville, KY 40520
Phone: 248-1111
Fax: 248-1112



WBW
1000 N. 10th St.
Hopkinsville, KY 40520
Phone: 248-1111
Fax: 248-1112



GT
1000 N. 10th St.
Hopkinsville, KY 40520
Phone: 248-1111
Fax: 248-1112



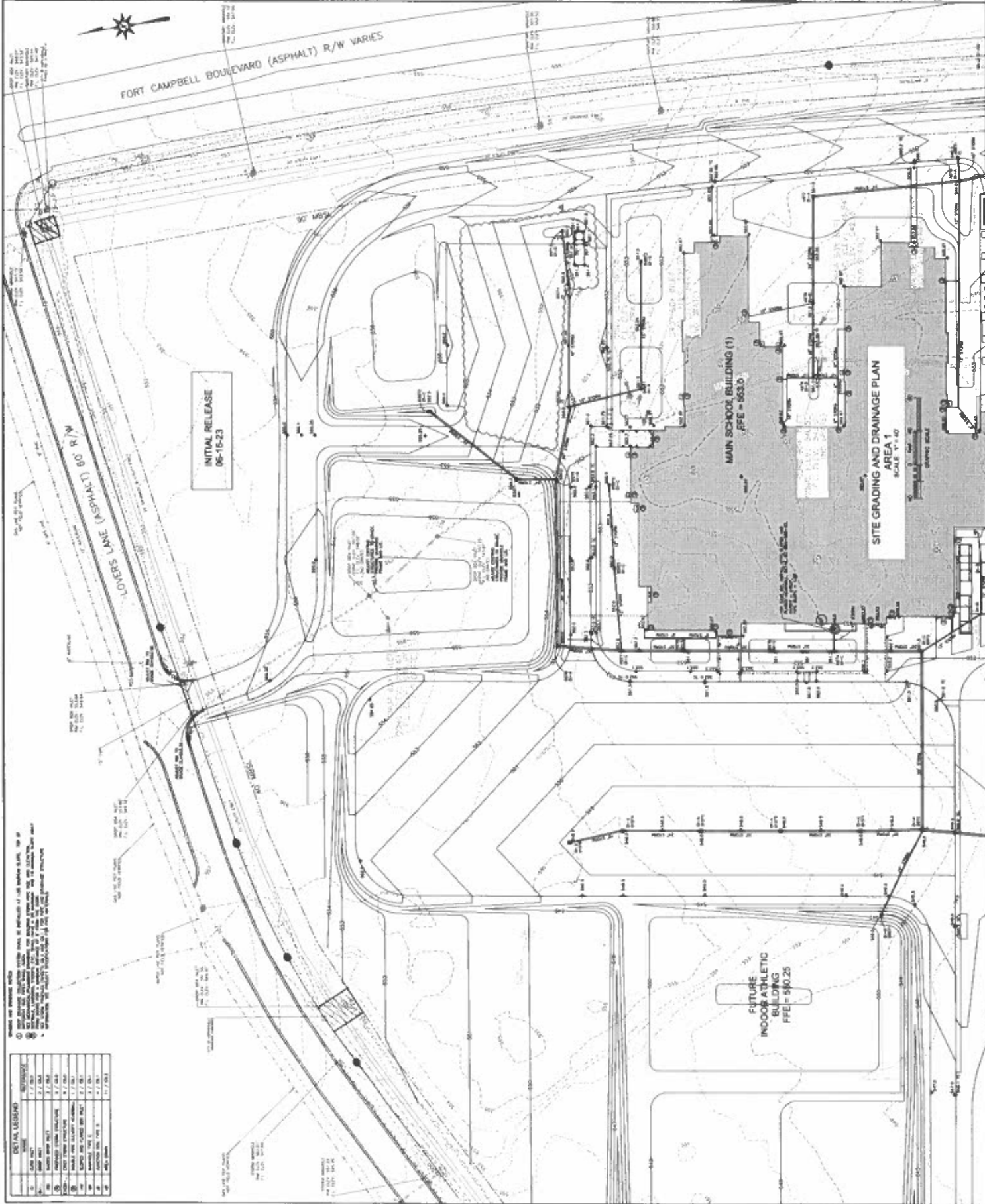
SITE KEY PLAN



NO.	DESCRIPTION	DATE
1	PRELIMINARY	10/1/00
2	REVISED	10/1/00
3	REVISED	10/1/00
4	REVISED	10/1/00
5	REVISED	10/1/00
6	REVISED	10/1/00
7	REVISED	10/1/00
8	REVISED	10/1/00
9	REVISED	10/1/00
10	REVISED	10/1/00

SITE GRADING AND DRAINAGE PLAN AREA 1
Project No. 2106-201
Date: May, 2012
Drawing No. C4.1

C4.1



INITIAL RELEASE
06-15-23

SITE GRADING AND DRAINAGE PLAN
AREA 1
SCALE: 1" = 40'

FUTURE
INDOOR ATHLETIC
BUILDING
FFE = 540.25

MAIN SCHOOL BUILDING (1)
FFE = 563.0

DETAIL LEGEND

NO.	DESCRIPTION	SCALE
1	EXISTING GRADE	1" = 40'
2	PROPOSED GRADE	1" = 40'
3	PROPOSED DRAINAGE	1" = 40'
4	PROPOSED PAVEMENT	1" = 40'
5	PROPOSED CURB	1" = 40'
6	PROPOSED SIDEWALK	1" = 40'
7	PROPOSED DRIVE	1" = 40'
8	PROPOSED LOT	1" = 40'
9	PROPOSED LOT	1" = 40'
10	PROPOSED LOT	1" = 40'

Change Order Request



C.O.R. # H3-7057-0004

G.C. #

Date: 07/11/2025

Project Name: H3-7057 Hopkinsville Christian Co Academy

Project #: H3-7057

To: Alliance Corporation- Glasgow
Attn: Kevin Hitchel
116 East College Street

Glasgow, KY 42141

From: Kalkreuth Roofing & Sheet Metal, Inc
Joe Minor
2131 Capstone Drive
Lexington, KY 40511

Phone: **Fax:**

Phone: (859) 231-7663 **Fax:** (859) 231-7669

We hereby propose to make the following changes:

PR 049 -North Dumpster Enclosure

Change Order Price \$3,311.86

This price is good for 5 days. If conditions change, this price is void.

We are requesting a time extension of 5 days in conjunction with this change.

Joe Minor 7/11/2025
Author Date Sent

☐ Accepted

This Change Order specifically excludes all escalation of prices of material, equipment or energy experienced by Contractor from the date of this change order until the execution of the needed material, equipment or energy associated with this particular increased scope of Work. The above prices and specifications of this Change Order request are satisfactory and are hereby accepted. All work to be performed under same terms and conditions as specified in original contract unless otherwise specified.

Authorized Signature

Date of Acceptance

Change Order Request



C.O.R. # H3-7057-0004

G.C. #

Date: 07/11/2025

Project Name: H3-7057 Hopkinsville Christian Co Academy

Project #: H3-7057

Labor

Labor Type	Man Hrs	\$/Hr	Burden	Fringe	Total Tax	Sub Total	Markup		Total Labor
							%	Amount	
Sheet Metal Labor	4.00	\$107.69	\$0.00	\$0.00	\$0.00	\$430.76	0.00%	\$0.00	\$430.76
Shop fab	2.00	\$60.00	\$0.00	\$0.00	\$0.00	\$120.00	0.00%	\$0.00	\$120.00
Delivery driver	8.00	\$45.00	\$0.00	\$0.00	\$0.00	\$360.00	0.00%	\$0.00	\$360.00
Project Manager	1.00	\$72.55	\$0.00	\$0.00	\$0.00	\$72.55	0.00%	\$0.00	\$72.55
Project Engineer	1.00	\$56.56	\$0.00	\$0.00	\$0.00	\$56.56	0.00%	\$0.00	\$56.56
Admin Assistant	1.00	\$43.18	\$0.00	\$0.00	\$0.00	\$43.18	0.00%	\$0.00	\$43.18
Sub Total					\$0.00	\$1,083.05		\$0.00	\$1,083.05
Grand Total					\$0.00	\$1,083.05		\$0.00	\$1,083.05

Materials

Materials	Quantity	Cost	Total Tax	Sub Total	Markup		Total Materials
					%	Amount	
13" Wide Continuous Cleat Coping	4.00	\$205.00	\$49.20	\$869.20	0.00%	\$0.00	\$869.20
13" Continuous Cleat Coping End Term	2.00	\$46.00	\$5.52	\$97.52	0.00%	\$0.00	\$97.52
13" Continuous Cleat Coping Miter	3.00	\$98.00	\$17.64	\$311.64	0.00%	\$0.00	\$311.64
Caulk, Rivets, Fasteners	1.00	\$150.00	\$9.00	\$159.00	0.00%	\$0.00	\$159.00
Misc materials	1.00	\$50.00	\$3.00	\$53.00	0.00%	\$0.00	\$53.00
Sub Total			\$84.36	\$1,490.36		\$0.00	\$1,490.36
Grand Total			\$84.36	\$1,490.36		\$0.00	\$1,490.36

Equipment

Equipment	Quantity	Cost	Total Tax	Sub Total	Markup		Total Equip.
					%	Amount	
delivery truck	1.00	\$250.00	\$0.00	\$250.00	0.00%	\$0.00	\$250.00
Sub Total			0.00	\$250.00		\$0.00	\$250.00
Grand Total			0.00	\$250.00		\$0.00	\$250.00
Total							\$2,823.41
Overhead							\$423.51
Bond							\$64.94
Total							\$3,311.86

FACPAC Contract Change Order

Supplemental Information Form (Ref# 63104)

Form Status: Saved

Tier 1 Project: Consolidated High School

BG Number: 22-104

Status: Active

District: Christian County (HB678) (115)

Phase: Project Initiation (View Checklist)

Contract: kalkreuth Roofing and Sheet Metal, Inc. , 0074, Roofing

Type: CM Bid Package

Proposed

Change Order Number	3
Time Extension Required	No
Date Of Change Order	8/27/2025
Change Order Amount To Date	Increase

Construction Contingency

Calculations below are project wide. Remaining negative Construction Contingency may require the submission of a revised BG1.

Current Approved Amount	\$6,320,436.60
Net Approved COs	\$1,043,518.80
Remaining After Approved COs	\$5,276,917.80
Net All COs	\$959,365.07
Remaining After All COs	\$5,361,071.53

This Requested Change Order Amount \$3,311.86

+/-

Change In A/E Fee This Change Order

+/-

Change In CM Fee This Change Order \$0.00

+/-

Remaining Construction Contingency \$5,361,071.53

Balance

Contract Change Requested By Local Board of Education

Contract Change Reason Code Expansion of Scope

Change Order Description And Justification

Cost associated with metal coping per PR #49 North Dumpster Enclosure.

Cost Benefit To Owner

The cost of this change order has been reviewed and determined to be reasonable.

Contract unit prices have been utilized No
to support the cost associated with this
change order.

Detailed Cost Breakdown

Contract unit prices have not been utilized, provide a detailed cost breakdown which separates labor, material, profit and overhead.

Detail Item	Amount	Percent of Total
Labor	\$1,333.05	40.25%
Materials	\$1,490.36	45.00%
Profit and Overhead	\$423.51	12.79%
Bond Insurance	\$64.94	1.96%
Cost Breakdown Total:	\$3,311.86	
Cost for this Change Order supported by an alternate bid or competitive price quote		
Explain Why		
Executed contract with contractor.		

Change Order Supplemental Information Form Signature Page (Online Form Ref# 63104)

Architect

Date

Construction Manager

Date

Finance Officer

Date

Local Board of Education Designee

Date