



The Digital Learning Coach

Bridging the Gap



What is a Digital Learning Coach?

- Demonstrates **visionary leadership**
- Assists with **teaching, learning and assessments**
- Helps create and support **digital age learning environments**
- Provides **professional development** and program evaluation
- Promotes **digital citizenship**
- Demonstrates **content knowledge** and engage in continuous **professional growth**
 - ISTE STANDARDS for Coaches

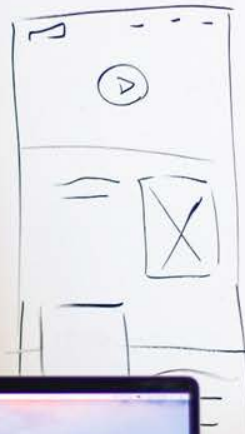
2018-2019 Coaching Focus

**Creativity, Curiosity, Critical Thinking,
and Communication** to lay groundwork
for **Portrait of a Graduate**.

Pivoting to meet the needs of teachers
and students at each of the schools.

SUBSCRIPTION EXPIRATION?

"HUGO" → "CLIP"



LEARN [REVIEW]
present "whole-check"
concept & products
[FOR ASSES] *
[FOR CHECK CONSULTANTS] *
FOR STEWARDSHIP DIRECTOR *
→





Professional Development #FTPolaris19

A Walk in
their Shoes

- After school PD
- On Demand Sessions





Engaging in Continuous Professional Growth:
KYTE/ISTE



CODING IN FIRST!



Engaging in Continuous Professional Growth: PBL Training



REMEMBERING JOHNSON



Design Sprinting





Robert F. Johnson, President
1977-1987

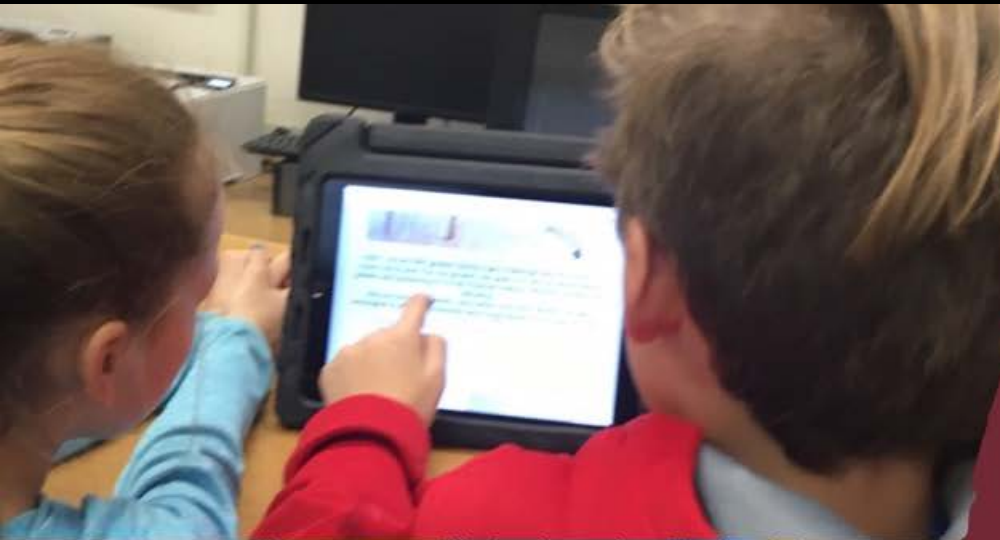
Robert F. Johnson, President
1977-1987

Robert F. Johnson, President
1977-1987

Robert F. Johnson, President
1977-1987

KBA PROJECT PLANNING



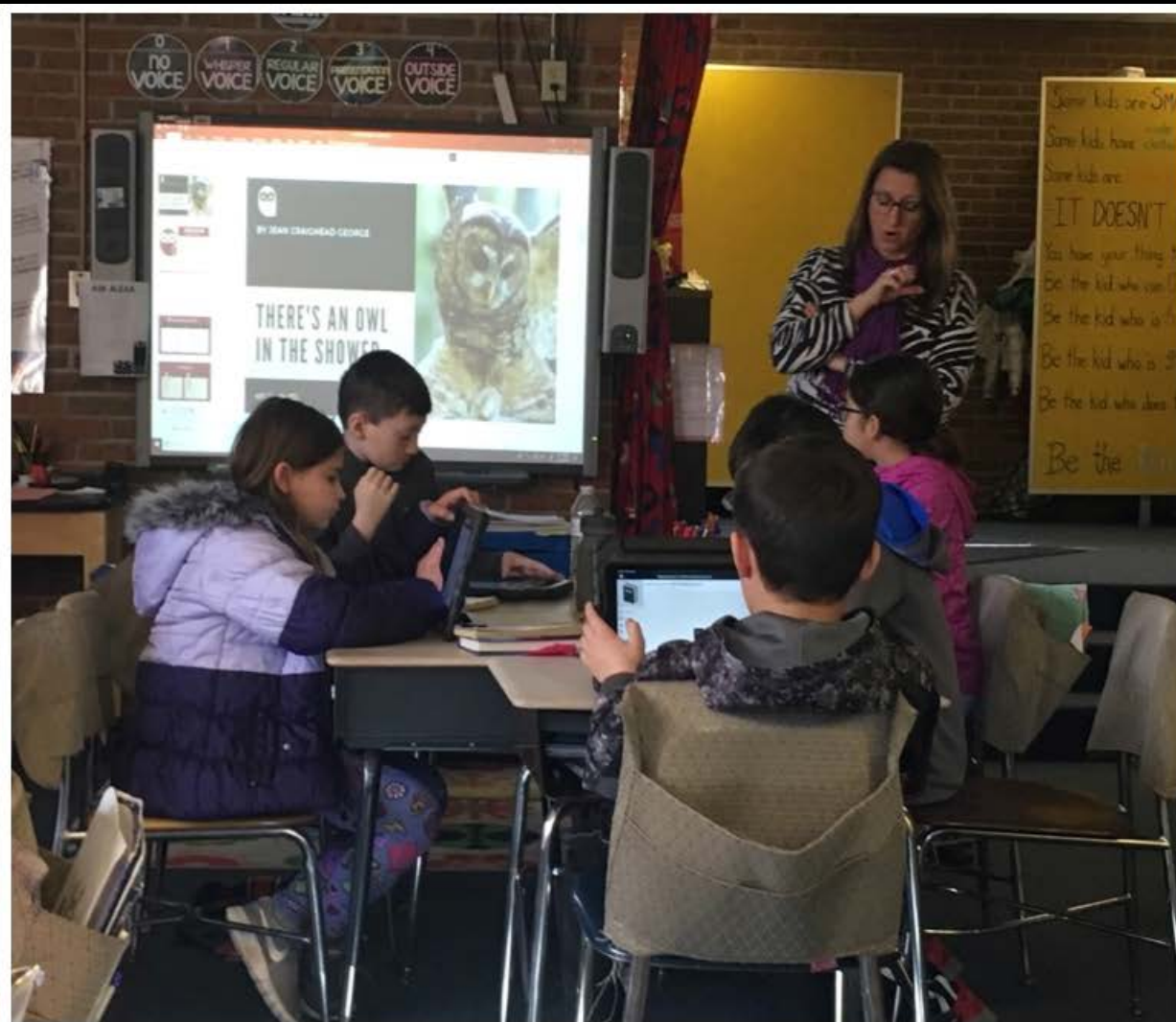
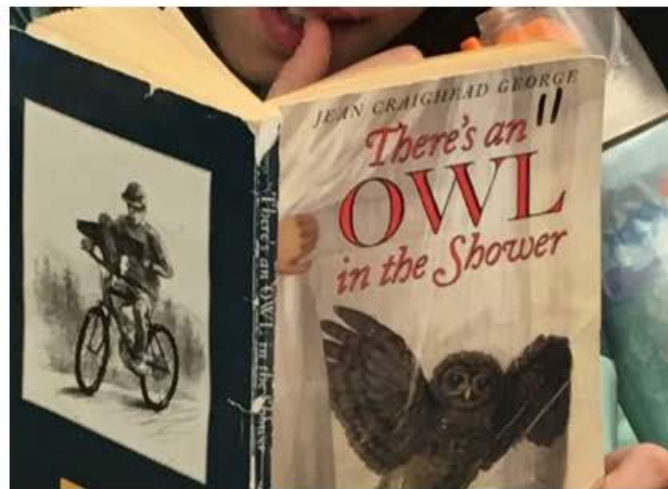


PBL
PROJECTS!

Thank You
Fort Thomas
Ice Cream!



PBL: Literature & Science Intersect



Design Sprint Day!



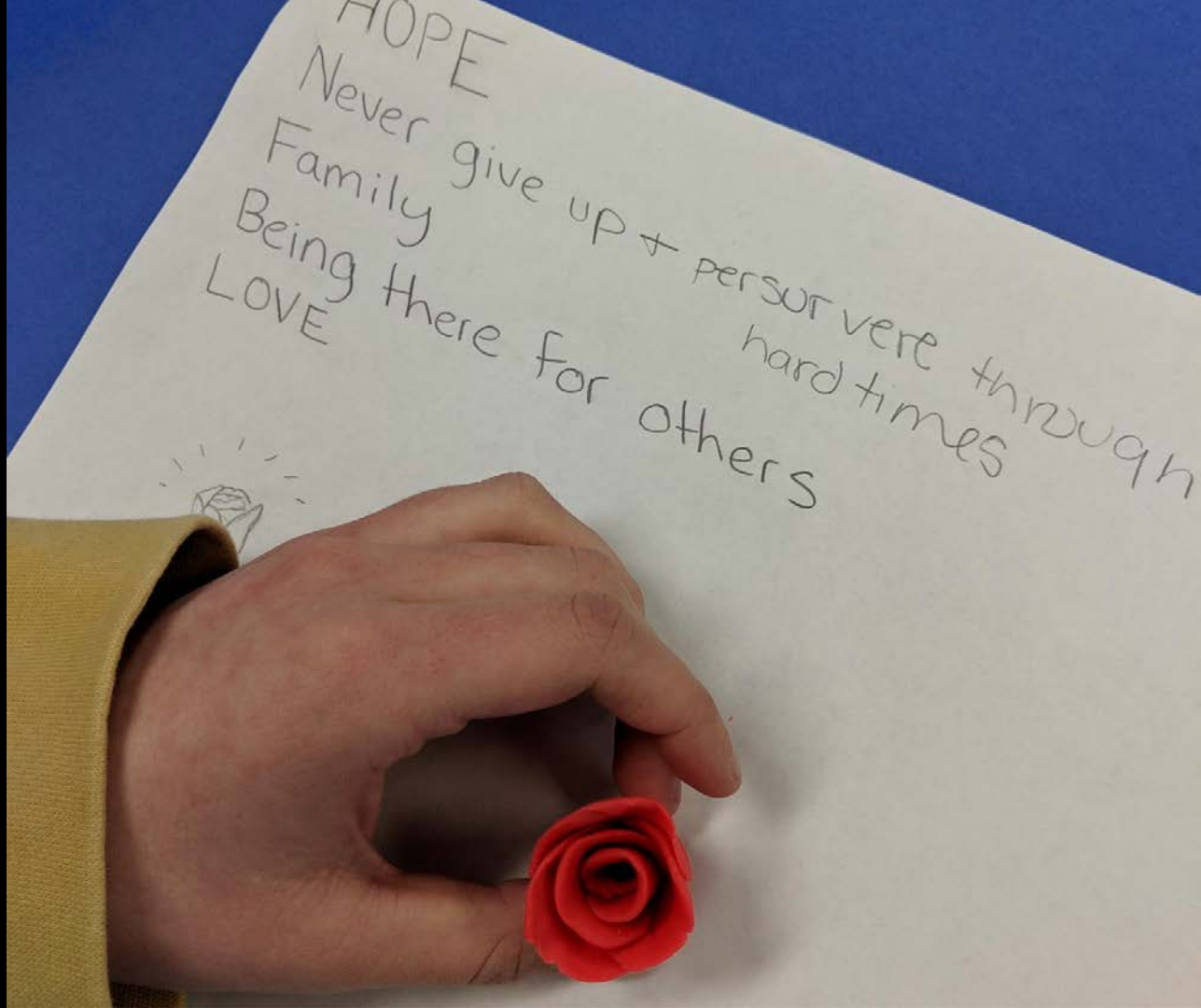
Multidimensional Roles

The Digital Learning Coach should play a role in the positive outcomes of faculty, staff, and students.



Collaborative Coaching Experiences

8th grade students identify themes from reading units and develop them into constructs, in collaboration with Heidi Neltner.



Collaborative Teaching Experiences

6th Grade students
creating Virtual
Reality tours of
significant places of
interest.





8th grade students creating instructional videos to be accessed with mobile devices using QR codes at each fitness station.

Professional Development Cohorts

Middle and high school teachers working in groups to develop Problem-Based Learning opportunities for students.

Project Name: What's in Your Wallet

Project Ideas:

- Students will gain knowledge on 14 cards work.
- Students will research how credit scores are calculated.
- Students will research 3-4 credit cards to determine which might be the best for them.
- Students will create a spreadsheet to examine the long term effects of debt.
- Students will present their findings in a form of their choice.

Content/skills covered

- Exponential Growth and Decay
- Financial Literacy

Driving Question: How to build your credit responsibly?

Major Products:

- Student choice of how they want to present their findings.
- Examples could be PSA flyer or PSA video

Human Impact

Standard: 8-ESS3-3

Apply scientific principles for designing a method to monitor and minimize a human impact on the environment.

Other Goals:

- Collaboration
- Cause & Effect (Cross cutting concept)
- Public Speaking
- Problem Solving
- Data Analysis
- Leadership
- Communication

How can we reduce storm water run off?

Major Projects:

- Research Report
- Video/Animation
- Proposal/Design

Going Public:

- Gallery Walk
- M.S. Showcase
- Present to grade level

Digital Artifacts

Students are transitioning to digital archival systems for showcasing their products of learning.



7th Grade Writing Portfolio 2018-2019

0





Program Paths

Collaborating with Guidance and Computer Science members to develop future paths of study for students.

Student-Based Enterprise

[SHOP](#) [ABOUT](#) [FAQ](#) [CONTACT](#) [Embroidery Options](#) [More](#)

BLUEBIRD EMBROIDERY

[f](#) [@](#) [p](#) [🛒 0](#)

Alumni



Blue Long Sleeve Alumni Tee

Alumni



Grey Short Sleeve Alumni Tee

Alumni



1/4 Zip Pullover

Alumni



LET'S CHAT

Collaborating with Family & Consumer Science Department and Business Department on activities and enterprises.

Pop-Up PD

HMS and HHS Teachers have been invited to The Bluebird Brew Cafe during planning periods to participate in no-agenda discussion sessions, in collaboration with Brian Mercer.



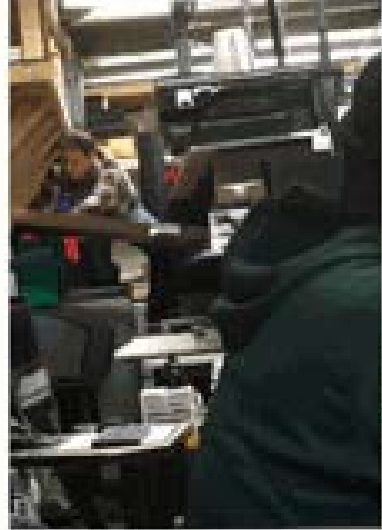
**PRESIDENTS DAY
TECH CAFE
FRIDAY, FEBRUARY 15**

8:15 – 11:15 AM & 1:00 – 2:30 PM – THE HHS BLUEBIRD CAFE

Continue Roles

1. Professional Development
2. Portrait of Graduate
3. Collaborate with HS and MS Media Specialist
4. FLL Robotics
5. Digital Learning Coaches PBL





Help Desk Support

- Support HMS/HHS 1700 students and MacBook's
- Each period I have student technicians in help desk
- Students first line of support
- On the job training
- Develop tool kit of knowledge



ATLAS

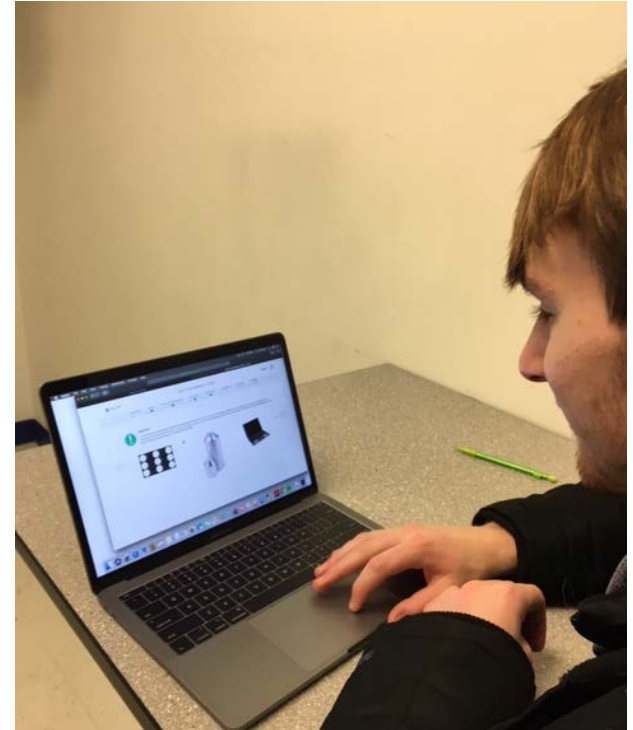
1. Service Fundamentals Test

- Soft skills, questioning and empathy
- Safety and Electrostatic Discharge
- Student 8/13 passed

2. MacBook Service Test

- Technical- Diagnose and repair
- 5 passed- Apple Certified Mac Technician
- 3 still preparing for test

3. ACMT added to Career Pathway

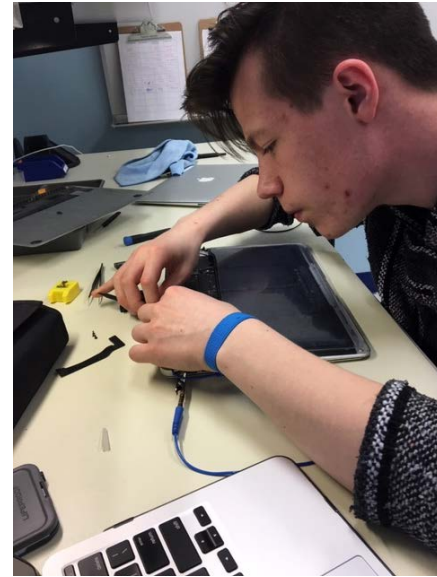


ACMT Certified

Hands on Experience



Repair



Apple Certification Opportunities

1. Internship FTIS Tech Dept
 - a. Scholarship
 - b. Resume
2. Part-time Jobs



Going Forward

Increase student involvement in our Digital Learning practices across hardware, software, and student and teacher training opportunities.



Going Forward

Using our current DLC practices, work with P12 teachers to better incorporate Portrait of a Graduate competencies into their instruction and assessment.

