



# Chronic Absenteeism

## At a Glance

### DEFINITION

Chronic absenteeism is defined as a student who misses ten (10) percent or more of his/her enrolled academic year.

**Chronic Absenteeism**



**Truancy**

**Missing School for ANY Reason, Excused or Unexcused, Puts Students at Risk**

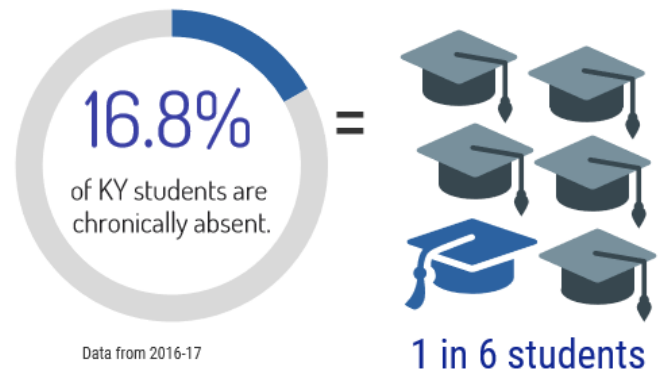


### UNDERSTANDING CAUSES

- ✓ **Misconceptions:** absences are only a problem if they are unexcused; missing two days per month doesn't affect learning; sporadic absences are not a problem; attendance only matters in older grades
- ✓ **Negative School Experiences:** struggling academically or socially; bullying; lack of appropriate accommodations for disability; suspensions/expulsions; negative attitude of parents due to their own school experience
- ✓ **Lack of Engagement:** lack of culturally relevant, engaging curriculum; no meaningful relationships with adults in school; stronger ties with peers outside of school; unwelcoming school climate; failure to earn credits/no future plans
- ✓ **Barriers:** illness and lack of health, vision, and dental care; unsafe path to school; poor transportation; involvement with child welfare or juvenile justice; trauma

### STATE DATA

Infinite Campus Pathway:  
KY State Reporting → KDE Reports → Chronic Absenteeism



### STRATEGIES FOR SUPPORT

#### Know Your Data

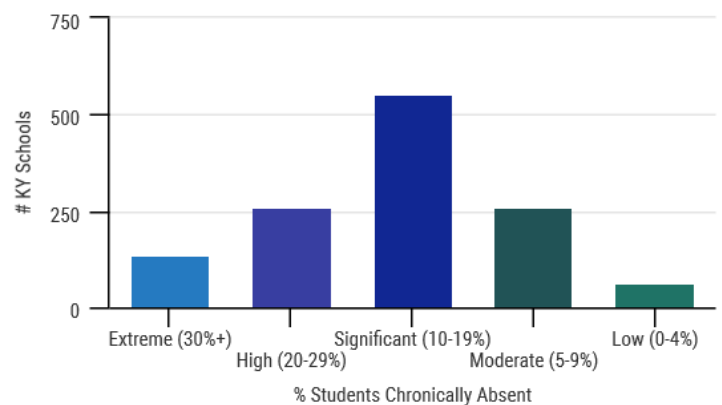
Track students who miss school time for any reason. Early identification of at risk students and trends in absenteeism e.g., time of year will help with home communications and specific interventions.

#### Communicate with Home

Write or call families/ caregivers as early as possible with student-specific attendance data to raise awareness. Help with action plans to overcome barriers.

#### Identify Root Causes

Assess prevalent reasons for absences. Create positive home and community partnerships to build support systems health, transportation, school climate, etc.



KENTUCKY DEPARTMENT OF EDUCATION  
300 SOWER BOULEVARD  
FRANKFORT, KY 40601  
(502) 564-4772