

FAIRFIELD
POP. 142



THE WORLD AWAITS

WE ARE IN THE GIFT BUSINESS



"WHAT WILL OUR SCHOOLS DO TO UNCOVER AND DEVELOP THE GIFTS OF OUR CHILDREN?"

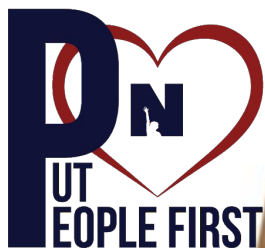


DEDICATED TO OUR COMMUNITY WORK FORCE DEVELOPMENT DRIVING QUESTIONS

HOW DO WE ALIGN
RESOURCES TO
SUPPORT THIS
CONVERSATION?

HOW DO WE DEEPEN
THE CONVERSATIONS
WITH OUR
COMMUNITY ABOUT
THE PURPOSE OF
SCHOOL?

HOW DO WE
(STUDENTS, SCHOOL
LEADERS, COMMUNITY
LEADERS) DEFINE
COMMUNITY CENTERED
CURRICULUM?



**VALIDATING LABOR DATA
ENGAGING WITH EMPLOYERS
EVALUATING STUDENT OUTCOMES**

DEFINING CCS LEARNING COMPETENCIES
CONNECTING NCS TO EMPLOYERS
CREATING NEW PATHWAYS



DEVELOPING CCS ANCHORS
IMPLEMENTING NEW PATHWAYS
GROWING WORK BASE

1. COMMUNITY BUILDING & AWARENESS
2. DEVELOPING SHARED PURPOSE
3. COMMITTING TO INITIAL PRIORITIES

1. SHARED VISIONING
2. ANCHOR PROGRAMS
3. ANCHOR PRACTICES

1. ACTING ON VISION
2. MONITOR ANCHORS
3. INNOVATE & GROW

**ENERGIZE
THE WORLD**

**ENERGIZE
THE
WORLD**

**DEDICATED TO
OUR COMMUNITY** **EARLY COLLEGE
& CAREER EXPERIENCES**

**COMMUNITY
CENTERED
EXPERIENCES**



**COMMUNITY
HEALTH
& ENGAGEMENT**

THE COMMUNITY TABLE

**ALL
GRADUATES
IN THE CLASS
OF 2021**

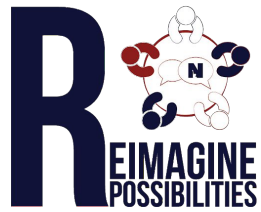


COMMUNITY-ENTERED CURRICULUM EXPERIENCES
 BY AUGUST 2019, NEW YORK COUNTY SCHOOLS WILL SHARE
 AN AUTHENTIC VISION FOR COMMUNITY-ENTERED
 SCHOOLS WITH OUR COMMUNITY.

STUDENT LEADERSHIP
BY AUGUST 2020, ALL STUDENTS GRADES
6-12 WILL ENGAGE IN STUDENT LEADERSHIP
EXPERIENCES IN THE COURSE OF THEIR
WEEKLY SCHEDULES.

STUDENT NPOWERMENT
BY AUGUST 2019, ALL STUDENTS
WILL HAVE A CARETAKING
EXPERIENCE WITHIN THEIR DAILY
SCHEDULE TO NPOWER
OWNERSHIP OF THEIR SCHOOLS

BUILDING THE BACKPACK COMMUNITY CENTERED SCHOOLS



TOGETHER WE ARE
BRILLIANT! WE WILL
BRING ESSENTIAL
COMMUNITY MEMBERS
TO THE TABLE TO BUILD
A POWERFUL,
SYSTEM-WIDE, LEARNING
MODEL



WE WILL **EMPOWER TEACHERS**
THROUGH ALIGNED
OPPORTUNITIES TO LEAD,
INNOVATE, & GROW TOGETHER



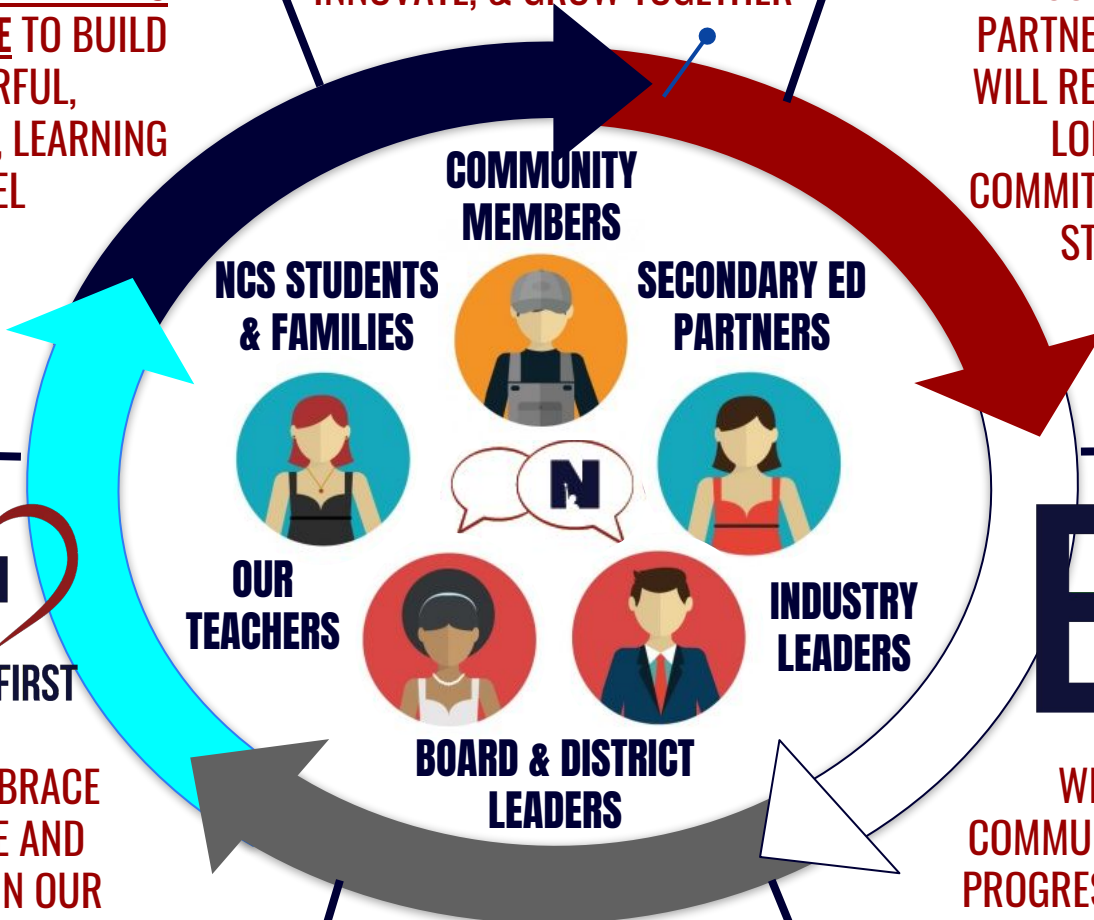
WE WILL LISTEN TO
OUR COMMUNITY &
INVEST IN **SUSTAINED**
COMMUNITY
PARTNERSHIPS THAT
WILL REINFORCE OUR
LONG TERM
COMMITMENT TO OUR
STUDENTS



WE WILL EMBRACE
COHERENCE AND
SIMPLICITY IN OUR
COMMUNITY
CENTERED SCHOOL
DESIGN FRAMEWORK
RECOGNIZING THAT
LESS IS MORE



WE WILL
COMMUNICATE OUR
PROGRESS WITH ALL
STAKEHOLDERS AND
BE FULLY
TRANSPARENT ABOUT
OUR GOALS AND NEXT
STEPS



TWO QUESTIONS:
WHAT DOES IT MEAN TO
BE A COMMUNITY?

WHAT IS THE PURPOSE
OF SCHOOL?

INNOVATE & GROW TEACHER EXTERNSHIPS

INNOVATION & GROWTH GOAL

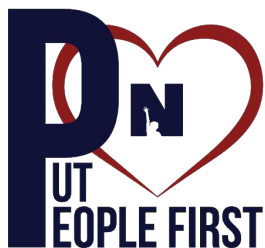
BY THE SUMMER OF 2023 ALL NCS TEACHERS WILL HAVE PARTICIPATED IN
TEACHER EXTERNSHIP TO COLLABORATE WITH LOCAL INDUSTRY PARTNERS TO
EXPLORE THE DEMANDS OF THE CURRENT & FUTURE WORKFORCE.

Beam **SUNTORY**



BUZICK
CONSTRUCTION INC.

Signature
HEALTHCARE



DEDICATED TO OUR COMMUNITY WORK FORCE ALLIANCE

HOW ARE WE DEDICATED TO OUR COMMUNITY?



BUILD
RELATIONSHIPS



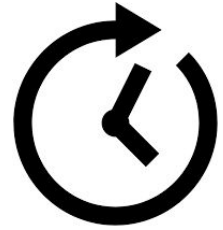
UNITE
PEOPLE



INNOVATE
TOGETHER



LEVERAGE
RESOURCES



DEDICATED
TO THE FUTURE

BY AUGUST OF 2020 THE NELSON COUNTY SCHOOLS WILL
BUILD A WORKFORCE ALLIANCE TEAM WITH LOCAL,
STATE, AND NATIONAL INDUSTRY LEADERS.



P
UT
EOPLE FIRST

R
EIMAGINE
POSSIBILITIES

I
NNOVATE
& GROW

D
EDICATED
TO OUR
COMMUNITY

E
NERGIZE
THE WORLD

DEDICATED TO OUR COMMUNITY WORKFORCE DEVELOPMENT CURRENT DATA REALITY

96.7% of my senior
class graduated high
school.



67.8% of my class was
transition ready.

65% of the transition
ready students were
were career ready.



DEDICATED TO OUR COMMUNITY

FOUR PATHS TO READINESS

WE ARE COMMITTED TO FOUR PATHS TO READINESS



DUAL CREDIT

EARLY COLLEGE
COURSES
CONNECTING TO
CAREER PATHWAYS



APPRENTICESHIPS

ON THE JOB
TRAINING PROVIDES
CREDIT TOWARDS
NATIONALLY
RECOGNIZED
ADVANCED WORK
CREDENTIALS



COOPERATIVE LEARNING

ON THE JOB
TRAINING CONNECTS
TO CAREER
PATHWAYS IN
SCHOOLS & HIGH
SCHOOL CREDIT

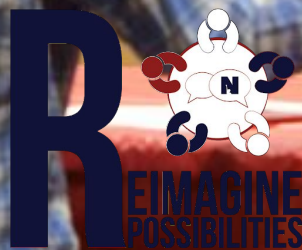


EXPERIENCE BASED WORK

WORKING IN THE
COMMUNITY TO GAIN
ESSENTIAL WORK
SKILLS WITHOUT
DEFINITE ALIGNMENT
TO CAREER
PATHWAYS

I'M TAKING
ADVANCED
MANUFACTURING
CLASSES AT ECTC
TOWARDS AN
ASSOCIATE'S DEGREE

MY ATC EXPERIENCE
CONNECTS ME TO
APPRENTICESHIP
OPPORTUNITIES WITH
EMPLOYER GROUPS



DEDICATED TO OUR COMMUNITY DUAL CREDIT OPPORTUNITIES CURRENT DATA REALITY

**253 HIGH SCHOOL STUDENTS (17.6%)
ENROLLED IN DUAL CREDIT COURSEWORK.**



**TECHNICAL &
ACADEMIC
COURSEWORK**



DEDICATED TO OUR COMMUNITY **APPRENTICESHIPS** POST-SECONDARY CREDENTIAL

**WE HAVE TWENTY-ONE (21) SENIORS
ENROLLED IN TRACK PRE-APPRENTICESHIP
& YOUTH APPRENTICESHIP PROGRAMS**



DEDICATED TO OUR COMMUNITY

COOPERATIVE LEARNING

WORK EXPERIENCE & CAREER PATHWAY



AGRICULTURE



**ADVANCED
MANUFACTURING**



**INFORMATION
TECH, ROBOTICS,
& CODING**



**CONSTRUCTION &
ENGINEERING**

**THIRTY-TWO
STUDENTS ENROLLED IN
WORK EXPERIENCE
RELATED TO CAREER
PATHWAY.**



DEDICATED TO OUR COMMUNITY EXPERIENCE-BASED WORK



Twenty-seven (27)
students enrolled in
experience-based
work.



DEDICATED TO OUR COMMUNITY WORK FORCE DEVELOPMENT

CREATING FUTURE CENTERED PATHWAYS



HEALTH CARE



**ADVANCED
MANUFACTURING**



**INFORMATION TECH,
ROBOTICS,
& CODING**

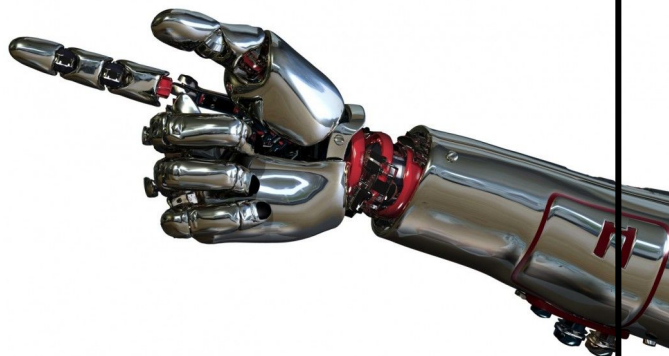


**CONSTRUCTION &
ENGINEERING**

NELSON COUNTY
SCHOOL WILL INVEST
IN **ENGINEERING,**
EDUCATION &
NURSING PATHWAYS
FOR NEXT YEAR.



**LEVERAGE
RESOURCES**



P **N**
UT
EOPLE FIRST

R **N**
IMAGINE
POSSIBILITIES

I **N**
NOVATE
& GROW

D **N**
DEDICATED
TO OUR
COMMUNITY

E **N**
ENERGIZE
THE WORLD

THE WORLD AWAITS

WE ARE IN THE GIFT BUSINESS

"WHAT WILL OUR SCHOOLS DO TO UNCOVER AND DEVELOP THE GIFTS OF OUR CHILDREN?"



THE WORLD AWAITS.

WORK FORCE DEVELOPMENT

CREATING STUDENT EXPERIENCES

