



### WHAT IS UNIFIED CHAMPION SCHOOLS?

Unified Champion Schools (UCS) is a school-based program which brings youth with and without intellectual disabilities (ID) together through sports, education, and awareness activities. UCS is built upon the premise that in order to have the greatest impact, the change process needs to start with young people. All Unified School strategies focus on creating and sustain a positive school climate that values and manifests appropriate and effective engagements leading to inclusion, acceptance, respect, and human dignity.

### UNIFIED SPORTS

Fully inclusive program that combines students with and without an intellectual disabilities on the same sports team. Unified Sports provides valuable sports opportunities to individuals with intellectual disabilities who may not be presently involved with their schools sports team.

### WHOLE SCHOOL ENGAGEMENT

Students of all abilities and ages have the power to positively impact their school communities by promoting social inclusion. With tools such as Spread the Word to End the Word, Fans in the Stands, and Unified Sports, youth raise awareness and begin creating an education environment where respect and acceptance are the norm and all students feel included and engaged.

### YOUTH LEADERSHIP

Inclusive youth leadership offers opportunities for young people of all abilities to be leaders in their schools and communities by promoting equality and acceptance. These leadership activities help students with and without ID find their voices by teaching them to become change agents striving for respect and inclusion.

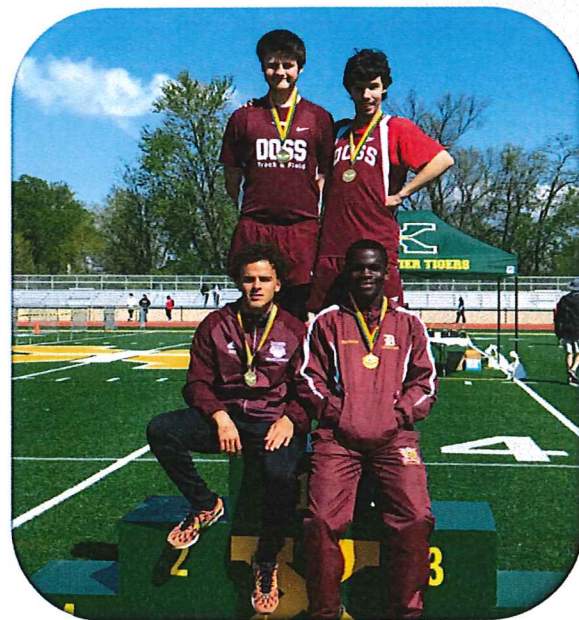
### KENTUCKY UNIFIED CHAMPION SCHOOLS STAFF:

**Justin Harville**—Director of Volunteers and Program Services

jharville@soky.org | 502.695.8222

**Karen Michalak-Parsley** - Unified Champion Schools Manager

kparsley@soky.org | 502.326.5002



**89,753+**

Youth with and without intellectual disabilities have been reached by the Unified Champion Schools Program

**73+**

Active Schools participating in Champion Schools Activities

**42+**

Total number of KHSAA Unified Sports schools in Kentucky



# 2018-19 Program Acknowledgement & Grant Funding Request Form



Special Olympics  
**Unified Champion  
Schools**

This application is a formal expression of your school's commitment to inclusion, acceptance and respect of all students through the implementation of the Unified Schools Strategy.

Please complete the entire form  
and return to:

Special Olympics Kentucky  
Attn: Unified Champion Schools  
105 Lakeview Ct.  
Frankfort, KY 40601

You may also email to:  
[jharville@soky.org](mailto:jharville@soky.org)  
or  
[kparsley@soky.org](mailto:kparsley@soky.org)

Questions? Please Contact:

**Justin Harville**  
[jharville@soky.org](mailto:jharville@soky.org) / 502-695-8222

OR

**Karen Parsley**  
[kparsley@soky.org](mailto:kparsley@soky.org) / 502-326-5002 ext.202

## Part 1: Contact Information

School Name: Nelson Co. High School District: Nelson Co.  
School Liaison POC: Kaitlin Mason School Enrollment #: 850  
School Administrator Sign-off: Lillian Clark  
School Address: 1070 Bloomfield Rd.  
City: Bardstown, Ky Zip: 40004 County: Nelson  
Email: Kaitlin.mason@nelson.kyschools.us School Phone: 502-349-7010

Program Level: (Please complete separate form for each school if registering as a district)

☐ Preschool

☐ Elementary School

☐ Middle School

☒ High School

## Part 2: Projected Participation / School Impact Numbers

### PROJECTED NUMBER OF PARTICIPANTS

	Number of Students Participating in each of the below areas or impacted within each of the below areas:		
	Unified Sports	Youth Leadership	Whole School Engagement
<b>Direct Athlete Participation</b> (Special Education competing or Leading)	5	5	10
<b>Direct Partner Participation</b> (General Education competing or Leading)	5	5	25
<b>Other Students Impacted</b> (General Student Body observing or engaged)	50		400
<b>Total Number of Faculty Advisors*:</b>	4-5		

\* Ideally an Advisory Team will include one GenEd teacher, one ECE teacher, one PE/APE/Coach and an Administrative staff member and Unified Pair of Students – to assist students in facilitating the program.

### Part 3: UCS Components

#### UNIFIED SPORTS (check all that fit your school environment)

- ☐ **Young Athletes** (inclusive sports program for individuals 2 – 7 years of age to build social, cognitive, and physical skills)
- ☒ **Unified Recreation Model** (promote social inclusion and increase sports skills in a non-competitive environment)
- ☒ **Unified Player Development Model** (teammates of higher ability serve as mentors to assist players of lower ability)
- ☐ **Unified Competitive Model** (teammates of similar ability and age who train and compete together)

Check the sports your school plans to participate in:

<input type="checkbox"/> <b>Unified Track and Field through the KHSAA</b>	<input type="checkbox"/> <b>Unified Bowling through the KHSAA</b>	<input type="checkbox"/> <b>Unified Soccer</b>
<input type="checkbox"/> <b>Unified Flag Football</b>	<input type="checkbox"/> <b>Unified Volleyball</b>	<input type="checkbox"/> <b>Unified Strength and Conditioning</b>
<input type="checkbox"/> <b>Unified Bocce</b>	<input type="checkbox"/> <b>Unified Cheerleading</b>	<input type="checkbox"/> <b>Unified Recreation / P.E.</b>
<input checked="" type="checkbox"/> <b>Unified Basketball</b>	<input type="checkbox"/> <b>Other:</b>	

#### YOUTH LEADERSHIP

Is your school interested in attending a UCS Youth Leadership Summit?  
(Summits are offered at various times and locations throughout the year.)

☒ Yes ☐ No

Do you plan to have a Unified Youth Leadership Committee/Club?

☒ Yes ☐ No

Advisor Name (if different than Unified Liaison):

Same

Email:

Phone:

Anticipated Number of Club/Committee Members:

10

#### WHOLE SCHOOL ENGAGEMENT

Student leaders are encouraged to conduct a few school-wide activities that impact the entire school community. Of the examples listed below, what initiatives do you see implementing throughout the year?

<input type="checkbox"/> <b>Get Into It – lessons</b>	<input checked="" type="checkbox"/> <b>Spread the Word to End the Word Campaign</b>	<input type="checkbox"/> <b>Disability Awareness Activities</b>
<input type="checkbox"/> <b>Fans in the Stands</b>	<input type="checkbox"/> <b>Unified Sports P.E. Curriculum</b>	<input type="checkbox"/> <b>Service Learning Project</b>
<input checked="" type="checkbox"/> <b>Polar Plunge and/or Truck/Plane Pull</b>	<input type="checkbox"/> <b>Unified Sports Expo Game / Field Day</b>	<input type="checkbox"/> <b>Respect Campaign/Rally</b>
<input type="checkbox"/> <b>Movies that Move – video discussions</b>	<input type="checkbox"/> <b>It's Our School Too – skit</b>	<input type="checkbox"/> <b>Coach Young Athletes</b>
<input checked="" type="checkbox"/> <b>Fundraiser for Unified Activities</b>	<input type="checkbox"/> <b>Other:</b>	

## Part 4: Agreement

By completing this application, we are pleased you recognize the positive impact of Unified Champion Schools initiatives have on your campus to create a school climate of social inclusion, acceptance, and respect for all.

As a UCS school you are agreeing to the following:

1. **The formation of a UCS Advisory Team** (as outlined on Page 1) and identify one individual to serve as the Lead Liaison between your school and the Special Olympics Kentucky State Office.
2. **With the assistance of the Advisory Team, students will lead the program and participate in working towards implementing one or more of the three Checked Unified Champion Schools components below during the 2018-2019 school year:**
  - ☒ **UNIFIED SPORTS:** Develop and implement a minimum of one Unified Sports activity or event.
  - ☒ **YOUTH LEADERSHIP:** Form an inclusive campus student leadership team and implement a Unified Club to encourage Unified student leadership development. *(Participation in Youth Summits are highly encouraged)*
  - ☒ **WHOLE SCHOOL INVOLVEMENT:** Develop and host at least one activity or event that encourages all students to participate (i.e. Spread the Word to End the Word/Respect Week or Unified Sports Days)
3. Provide **updates** to SOKY staff regarding campus activities via email, phone, or social media.
4. Complete midyear **and** year-end **UCS activity participation surveys**, administered by SOKY staff.
5. Complete the spring **Unified Champion Schools liaison survey** administered by UMass Boston.
  - a. Survey will be sent to school liaison listed on page 1. This person should be able to provide the most knowledge of UCS activities taking place as a whole on your school's campus.
6. **If requesting grant funds, complete the attached Budget and Funding Request form. Keep copies of receipts for all USED funds and return any UNUSED funds to Special Olympics Kentucky by May 31<sup>st</sup>.**
7. Seek support from SOKY Staff in implementing the program. WE ARE HERE TO HELP!

Further, you understand that Special Olympics Kentucky staff will provide your UCS School the following support:

1. SOKY consultation, education, support, and technical assistance for school-based UCS activities.
2. Resources and equipment for specific UCS activities, including Unified Sports, R-Word/Respect Week campaigns, youth leadership events and Young Athletes Kits.
3. Opportunities to apply for additional funding for original, youth-driven UCS projects.
4. Ongoing advisor and youth leader training opportunities, including Unified Coach training.
5. Guidance regarding SOKY and Unified Champion Schools policies, procedures, manuals, forms etc.
6. Clear, consistent communication from SOKY regarding these opportunities, resources, and support.

School Unified Liaison: X. Kaitlin mason Date: 10/8/18

School Administrator: X. Lupanie Clark Date: 10/8/18

## 2018 – 2019 BUDGET AND FUNDING REQUEST

School: Nelson County High School

### Maximum Funding Request Levels

- New Schools and Returning schools implementing all three UCS Components: up to \$1,500 .
- Returning schools implementing two UCS Components or two Unified Sports: up to \$1,000
- Returning schools implementing one UCS Component: up to \$500

**Note:** you may apply for any amount up to the maximum listed for your applicable level.

*Please do your best to anticipate your needs for the school year and keep receipts for all items purchased!*

Budget Line Item*	Amount Requested per Component			Amount Match/In-kind (amount contributed by the school)	Justification (Briefly explain why your request is necessary and include quantities when appropriate.)
	Sports	Leadership	Whole School Engagement		
Supplies	\$	\$	\$	\$	
Equipment (including team uniforms)	500				Basketball Team Uniforms
Transportation	200	100			Bus to Games + Leadership Summit
Facility Rental					
Awards					
Stipends	300				\$100 stipend for each coach.
SOKY League Fees / Other Athletic Fees					
Other:					
<b>TOTALS:</b>	\$ 1000	\$	\$	\$	

To be completed by SOKY Staff:

Number of participating school years: ① ② ③ ④ ⑤ ⑥ ⑦ ⑧ ⑨ ⑩+

Actual Number of Participants				Grant Amount Approved
Advisors	Unified Sports	Leadership	Whole School	
				\$

## WHAT DOES THE PROGRAM FUND?

Grant funds support projects and activities that create **repeated, meaningful and sustainable inclusive sports, social and education opportunities**. All projects and activities must aim to engage students with and without disabilities of similar ages and numbers as equal partners, teammates, classmates and peers. Focus should be placed on activities that bring students together regularly in nearly equal ratios, or as close as possible, so they can form relationships and meaningful interactions.

Grants are made possible primarily from funds from the United States Department of Education and therefore, are subject to strict spending guidelines. When preparing your application, please keep in mind funds **cannot** be used for the following:

- Any activity that includes only students with disabilities or only students without disabilities.
- Food other than **PRE-APPROVED** snacks/lunches during a unified sports competition, leadership club/council meeting or youth summit event.
- Fees for assembly speakers or presentations.
- Footwear (i.e. athletic shoes for a sports team).
- Arts and crafts activities not directly related to inclusive club/community or sport initiatives.
- Purchase of items to be sold for fundraising efforts.
- Electronics (i.e. computers, cameras, tablets)

**NOTE:** Special Olympics Kentucky (SOKY) will work with your school to establish the appropriate distribution method(s) for your approved funds. This may include direct invoicing by providers to SOKY, upfront funding or reimbursement.

**Unspent grant funds must be returned to Special Olympics Kentucky by May 31<sup>st</sup>!**

Approved Budget Line Item Definitions	
<b>Supplies</b>	Office type supplies, sign materials, art supplies, meeting materials, photo printing, special event t-shirts (must receive SOKY approval).
<b>Equipment</b>	Team uniforms, reusable water bottles and sport equipment (except footwear) related directly to Unified sports. Bowling shoe rental is an acceptable expense and can be included in this line item.
<b>Transportation</b>	Approved travel related directly to UCS activities and unified sports. Mileage reimbursement, bus rental, train fare, parking fees.
<b>Facility Rental</b>	The cost to rent venues to hold events that are directly related to approved UCS activities or unified sports.
<b>Awards</b>	Trophies, medals, plaques, special graduation tassels or cords for unified athletes and partners.
<b>Stipends</b>	Wages for teachers, coaches, and school staff supporting UCS programming outside of the normal school day. Amounts may vary per school and each school should modify to what would be sustainable for your school to fund in future years.
<b>SOKY League Fees or Other Athletic Fees</b>	Fees charged by Special Olympics Kentucky to participate in Unified Sports or fees charged by the school or high school athletic association to participate in Unified Sports.