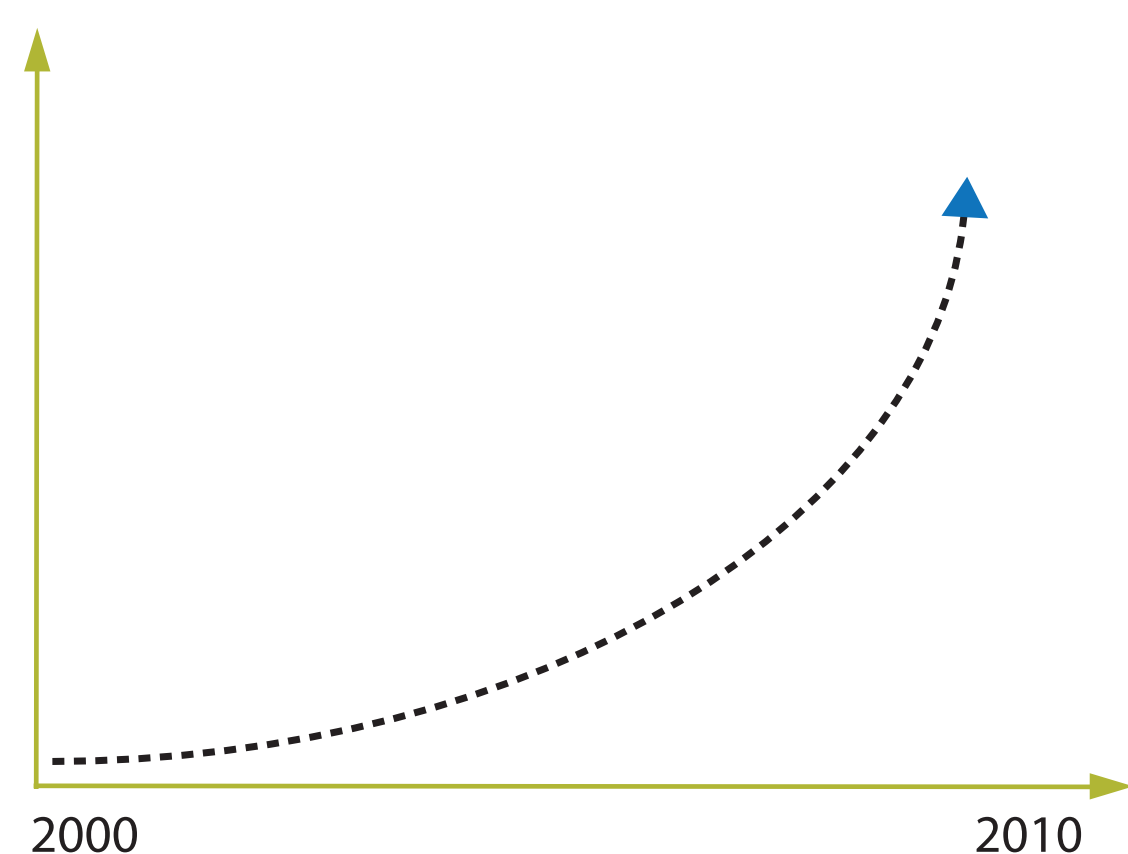


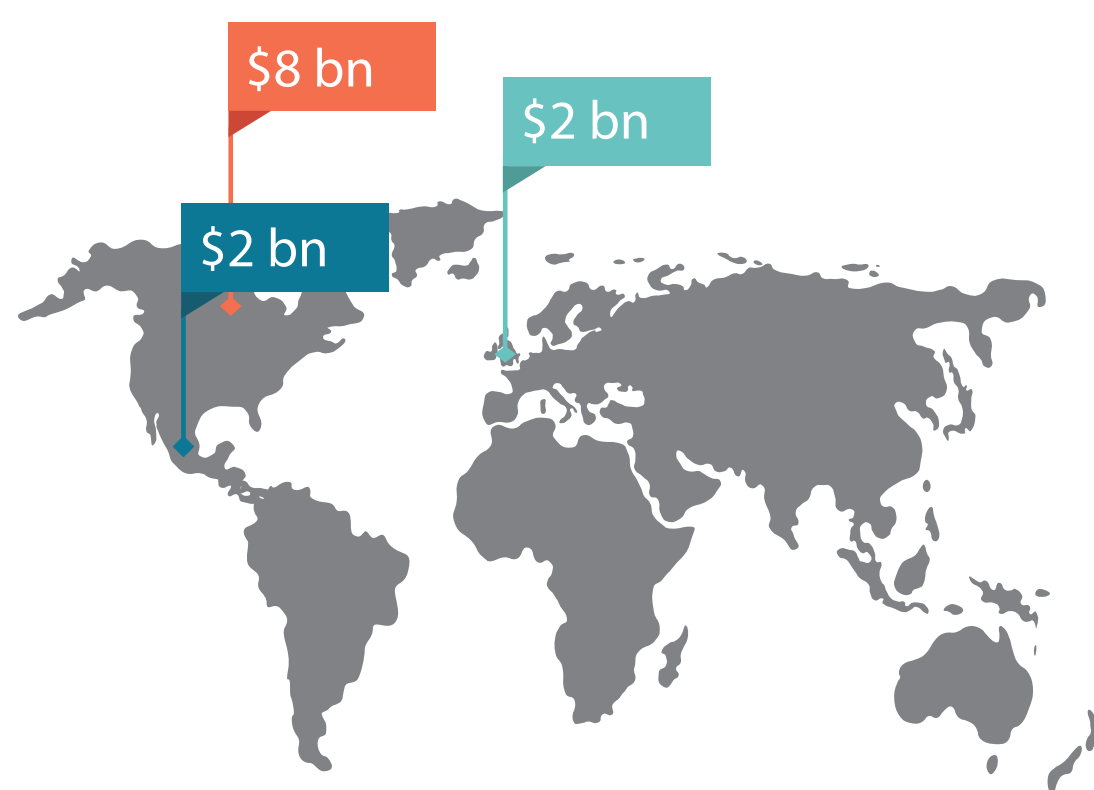
Global Kentucky

How global is Kentucky?

Changing demographics and economic opportunities show we're more global than ever.



69% increase in the foreign-born population
Nationally, the majority of those born after 2008 are minorities.



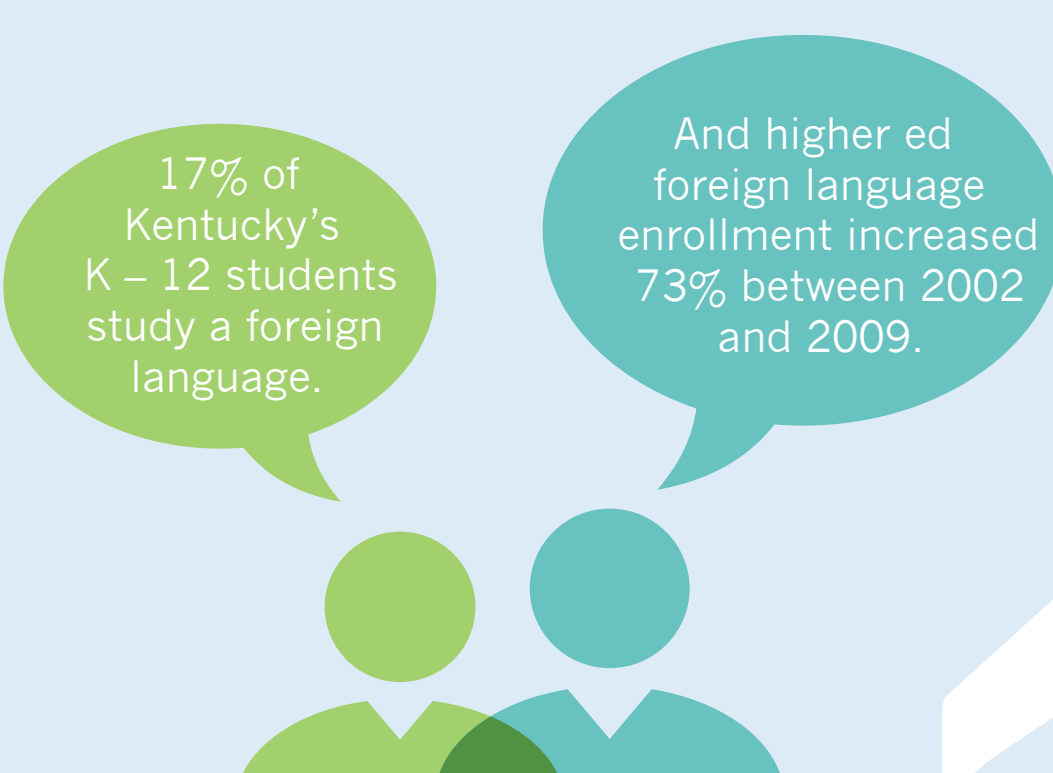
13% of state GDP tied to exports of goods
Canada, Mexico, and the United Kingdom are our top export markets.



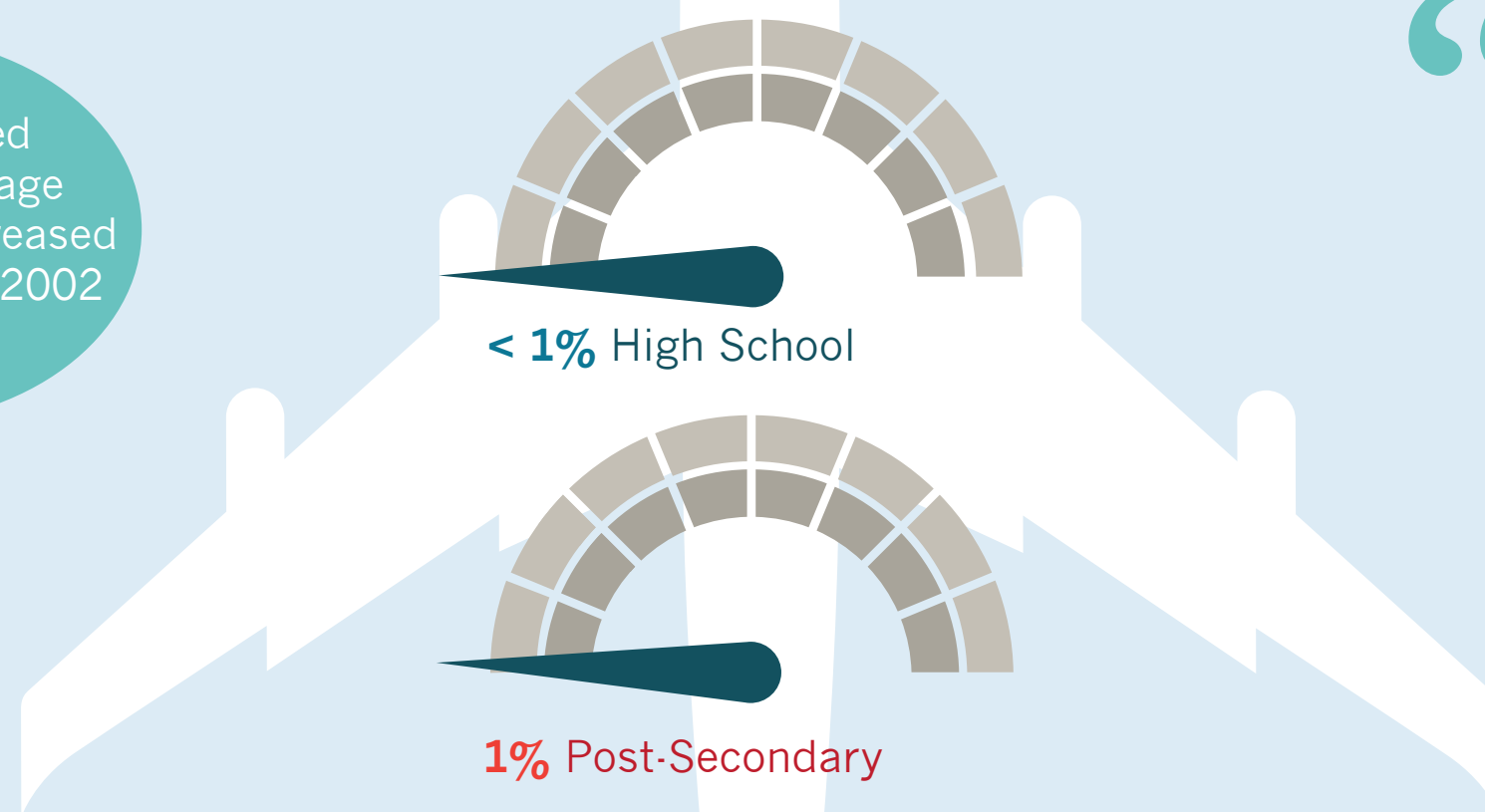
21% of jobs are tied to international trade
That's one out of every five jobs in the state.

How are we preparing students?

Schools can not yet meet community needs and workforce demands.



Twenty-one of the top 25 industrialized countries begin language instruction in elementary school.

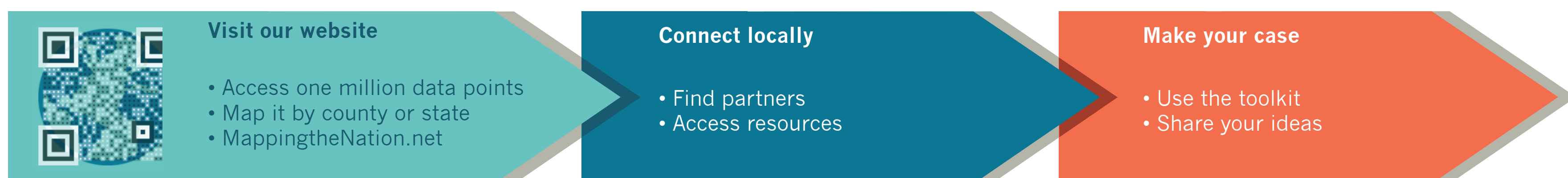


Vast majority of Kentucky students do not take part in study abroad programs.

“...Knowledge of other cultures, economies, and systems of government is becoming an increasingly necessary skill for future leaders and workers.”

- International Education Policy Resolution SCR 142, April 11, 2002

How do we plan for the future?



MAPPING THE NATION:
LINKING LOCAL TO GLOBAL
a project from

Asia
Society®
Partnership for
Global Learning

LONGVIEW
FOUNDATION

ssas