

KENTUCKY DEPARTMENT OF EDUCATION

STAFF NOTE

Review Item:

Annual Performance Report of Schools Participating in AdvanceKentucky to Grow AP Programs

Applicable Statute or Regulation:

KRS 158.007, KRS 158.622, KRS 158.847, KRS 158.848, KRS 158.849, 704 KAR 3:510

History/Background:

Existing Policy. The Kentucky Science and Technology Corporation (KSTC) has just completed a five-year grant agreement with the National Math and Science Initiative (NMSI), which awarded Kentucky a \$13 million matching grant from 2008/09 through 2012/13 to support Advanced Placement¹ (AP) programming among public high schools. The Kentucky Science and Technology Corporation is continuing program expansion to new high schools in 13-14, although at a slower pace, and offering service to ‘graduating’ schools through a new ‘Partner Program’. This continues to be a proven public-private partnership accruing benefit for Kentucky students. AdvanceKentucky continues as a statewide effort to dramatically expand participation and success in AP courses in Mathematics, Science and English and is a strategy in the KDE College and Career Readiness Delivery Plan. Participation in AdvanceKentucky is voluntary, based on an application process and commitment to open enrollment to serve students traditionally underrepresented in advanced placement.

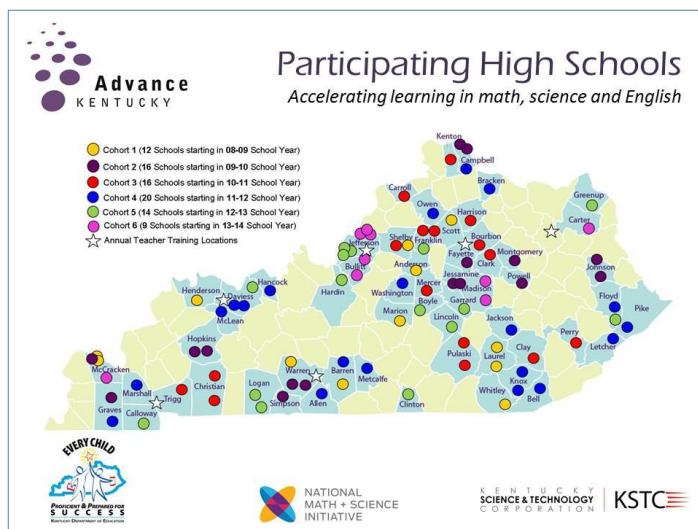


Figure 1: Map of schools' participation in AdvanceKentucky from 2008/09 to 2013/14.

2013 Annual Progress Report

Joanne Lang, KSTC Executive Vice President, head of AdvanceKentucky, will present the 2013 results among AdvanceKentucky schools. In general, these schools have again performed well above state and national rates of improvement. In the meantime, Figure 1 offers a review of impact on Kentucky public high school performance since the year before AdvanceKentucky was introduced to schools. In summary, since 2008 Kentucky has increased by 100%, the number of qualifying scores on AP exams in all subjects statewide compared to 49% for the U.S. Kentucky has climbed in the

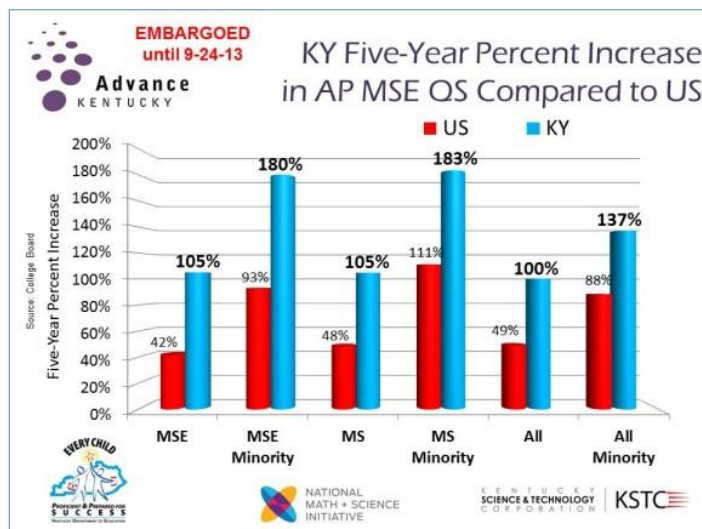


Figure 2: Kentucky's Five-Year AP performance since AdvanceKentucky was introduced to public High Schools.

national rankings among minority performances, which were double the national rate for Math, Science and English (MSE). The newest cohort of schools was announced by AdvanceKentucky at the April 2013 Kentucky Board of Education meeting.

Funding History and Future Needs

NMSI is a national non-profit organization funded by ExxonMobil, Dell and the Gates Foundation, among others. The Kentucky Science and Technology Corporation (KSTC) was invited by KDE and agreed to be the nonprofit applicant to NMSI and serve as the partner assuming responsibility for creating and operating the program, called AdvanceKentucky, to implement Kentucky's grant.

All funding sources support the NMSI model, which is focused on serving underrepresented low income and minority students in AP. The Kentucky Department of Education continues as an

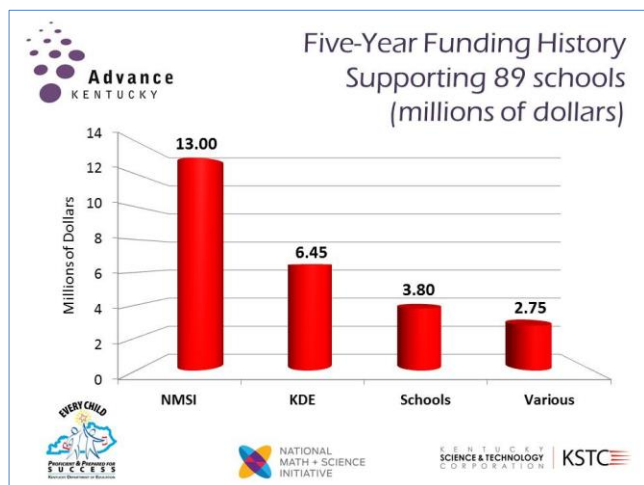


Figure 3: Five-Year History of Funding Sources for schools participating in AdvanceKentucky.

annual funding partner through Senate Bill I (2009) dollars and support from the state's Race to the Top 3 grant. Other sources of funding have been KDE's prior federal APIP grant, three grants from the Appalachian Regional Commission, James Graham Brown Foundation, Berea College (supported by four federal grants), Lockheed Corporation, ExxonMobil, and support from the Council on Postsecondary Education and Kentucky Downs. Local funding helps support many of the participating schools' efforts to implement selected elements of the program. See Figure 3 for a five-year overview of funding sources for this program.

Growth Scenarios. Estimated unmet funding needs for expansion over the 14-16 biennium total \$2M with \$800K in 14/15 and \$1.2M 15/16. This is based on expanding service to 12 more schools each year and serving an average of 36 active cohort schools per year.

Partner Program. To help support schools that have graduated to the Partner Program status, an additional \$2.9M is needed over the biennium (\$1.3M in 14/15 to support 64 schools and \$1.6M in 15/16 to support 79 schools. This is based on proposed support for limited elements of teacher training, student study sessions and partial exam fees. The 13/14 school year is the first time that schools have 'graduated' from the original agreements and are signing up to sustain efforts under the AdvanceKentucky Partner Program.

Impact on Getting to Proficiency:

AdvanceKentucky is a key strategy in the KDE College and Career Readiness Delivery Plan. As of the 13-14 school year, AdvanceKentucky will have served 89 Kentucky schools involving 60,000 student enrollments. Appendix A illustrates the increase in the number of students receiving qualifying scores over the last four years.

The rigorous professional learning opportunities for participating teachers in AdvanceKentucky are a focal piece of the model. Over 650 AP teachers and 3,000 Pre-AP teachers have received support to date. This proven model encourages more students to take AP classes, more time spent on content learning for students through weekend or after school study sessions, extensive AP and Pre-AP teacher training, and rewarding students, teachers and administrators for success on AP math, science and English exams.

A new longitudinal review is underway to track students from AdvanceKentucky schools for measures of college readiness. This is being set up as an annual review in collaboration with the Kentucky Center for Education and Workforce Statistics.

Contact Information:

Felicia Cumings Smith
Office of Next Generation Learners
502-564-9850
Felicia.smith@education.ky.gov



Commissioner of Education

Date:

October 2013

¹ Advanced Placement Program, AP, and Pre-AP are registered trademarks of the College Board.