

Tower Park Athletic Complex

A generational community project



Rich in Tradition Focused on the Future



Current Limits to Opportunity

Decades of Feedback

- Limited track lanes prevent official meets
- Width of soccer field limits level of play
- No locker rooms
- No restroom access to athletes in proximity to competition
- Limited handicap accessibility
- Inefficient lights, sound, scoreboard
- Limited parking for fans
- Traffic and parking congestion burden for neighbors
- Unsafe drop-off and entry conditions
- Limited shelter during severe weather



Current Limits to Opportunity

(Continued)



- Limited seating for fans
- Limited ability to expand to other sports (i.e. Lacrosse)
- Limited access to wifi, cameras, technology
- No capacity to provide training opportunities for other sports/activities
- Emergency response difficulties
- No locker room/changing space for officials
- Limited space for athletic trainer/ privacy for player assessment and treatment
- Very little investment able to be made in this space by the schools to date

Why Now?

The right time to do something transformational after decades of feedback

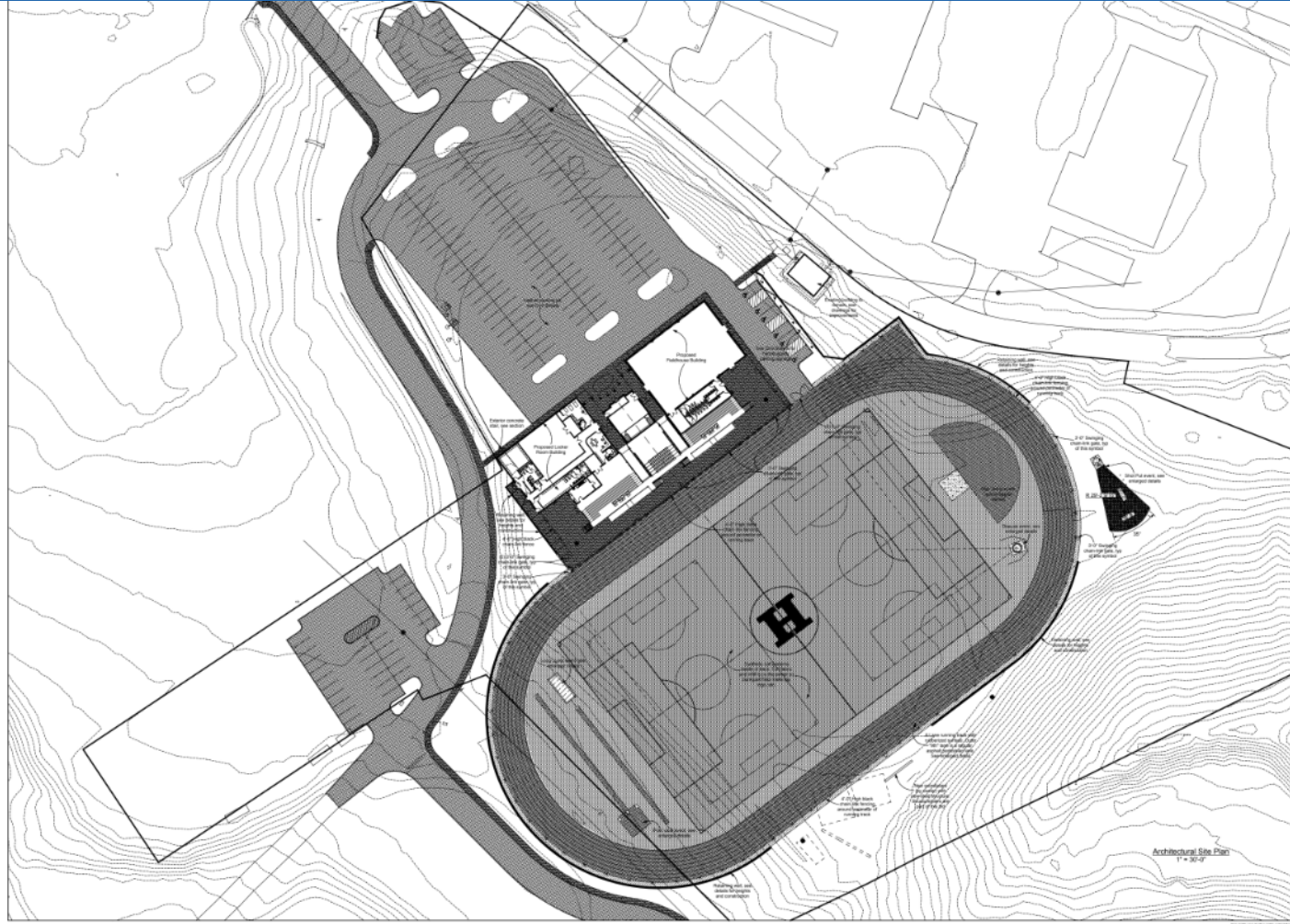
- **Opportunity to truly enhance community/FTIS partnership**
- Turf and track at end of life
- Unique opportunity in FTIS owned space
- **A project to positively impact numerous programs**
- All 5 academic facilities state-of-the-art

Rich in Tradition Focused on the Future

Transformational Opportunity



Rich in Tradition Focused on the Future



Tower Park Athletic Complex - Renovations
Army Reserve Road
Fort Thomas, Kentucky 41075
Fort Thomas Independent Board of Education
Mr. Brian Robinson, Superintendent

SHEET TITLE

Architectural
Site Plan

EG #

23-523

REV #

334-622

DATE

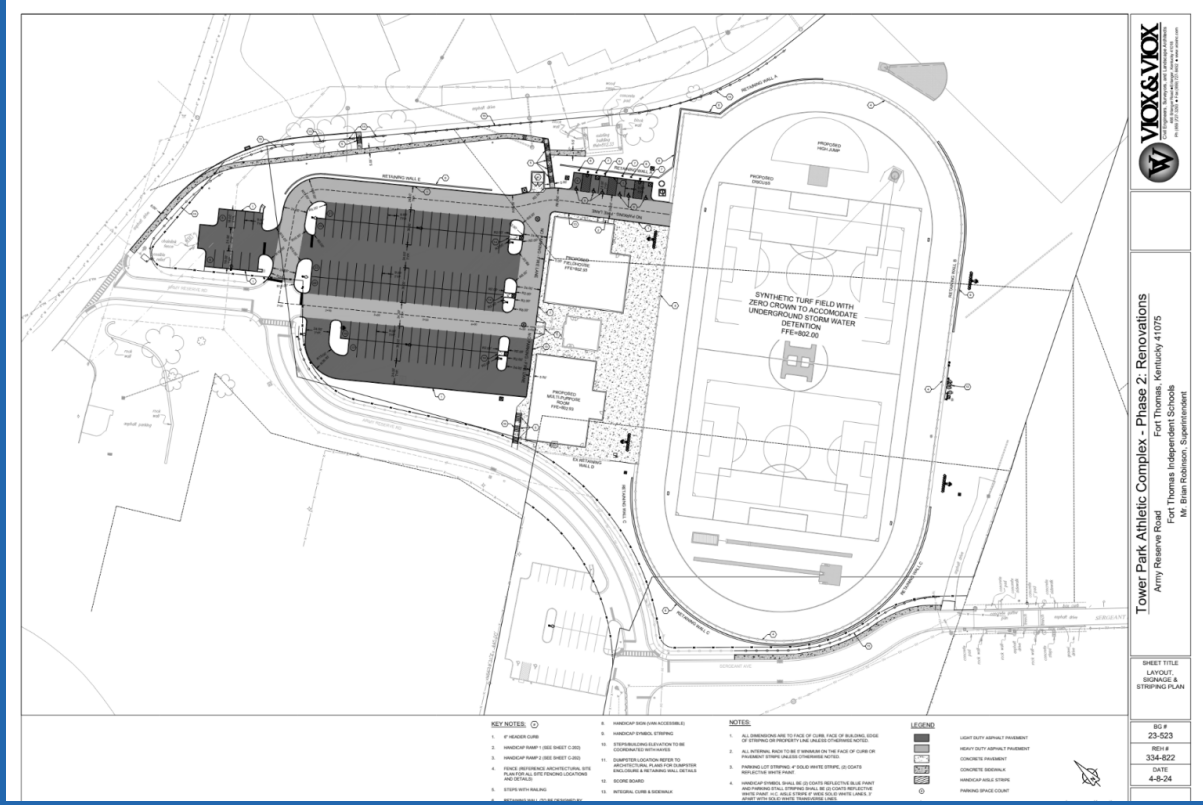
8-9-23

1

REH&A
ARCHITECTS

ROBERT REHNT DAVIS & ASSOCIATES, P.L.L.C.
201 LOBBY LEXMAR - FORT THOMAS, KENTUCKY 41075

Engineering Designs





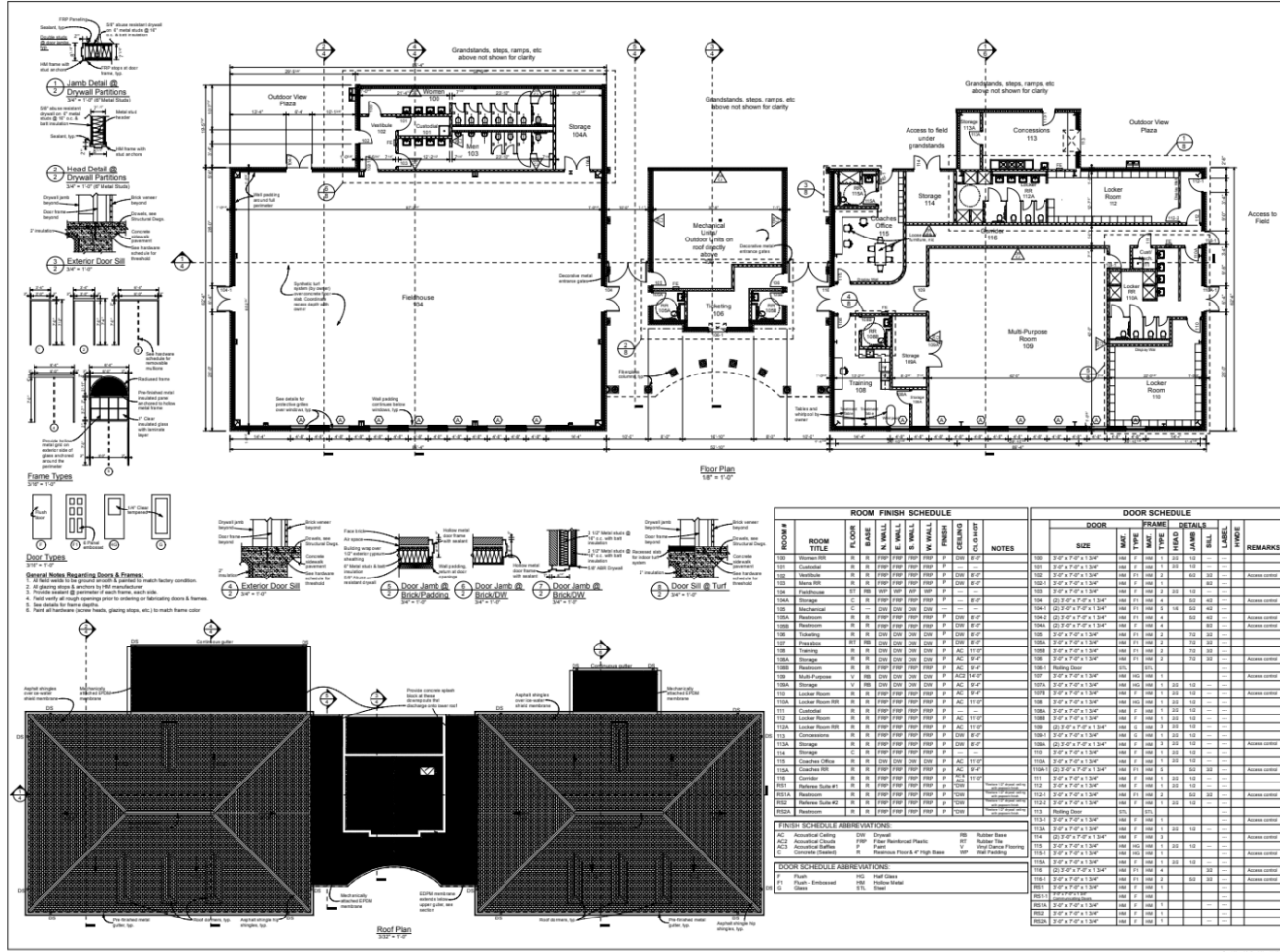
Mr. Brian Robinson, Superintendent



CIVIL	TITLE SHEET	ELECTRICAL	
1	GENERAL NOTES	1	PLUMBING COVER SHEET
2	GENERAL AND PRELIMINARY PLANS	10	PLUMBING TYPICAL PLANS
3	EXIST. CONDITIONS AND PLANS	11	PLUMBING TYPICAL PLANS
4	WATER SUPPLY AND TREATMENT PLANS	12	PLUMBING TYPICAL PLANS
5	SEWERAGE AND SANITATION PLANS	13	PLUMBING TYPICAL PLANS
6	STORM DRAINAGE PLANS	14	PLUMBING TYPICAL PLANS
7	WATER TREATMENT PLANS	15	PLUMBING TYPICAL PLANS
8	WATER DISTRIBUTION PLANS	16	PLUMBING TYPICAL PLANS
9	SEWERAGE AND SANITATION PLANS	17	PLUMBING TYPICAL PLANS
10	STORM DRAINAGE PLANS	18	PLUMBING TYPICAL PLANS
11	WATER TREATMENT PLANS	19	PLUMBING TYPICAL PLANS
12	WATER DISTRIBUTION PLANS	20	PLUMBING TYPICAL PLANS
13	SEWERAGE AND SANITATION PLANS	21	PLUMBING TYPICAL PLANS
14	STORM DRAINAGE PLANS	22	PLUMBING TYPICAL PLANS
15	WATER TREATMENT PLANS	23	PLUMBING TYPICAL PLANS
16	WATER DISTRIBUTION PLANS	24	PLUMBING TYPICAL PLANS
17	SEWERAGE AND SANITATION PLANS	25	PLUMBING TYPICAL PLANS
18	STORM DRAINAGE PLANS	26	PLUMBING TYPICAL PLANS
19	WATER TREATMENT PLANS	27	PLUMBING TYPICAL PLANS
20	WATER DISTRIBUTION PLANS	28	PLUMBING TYPICAL PLANS
21	SEWERAGE AND SANITATION PLANS	29	PLUMBING TYPICAL PLANS
22	STORM DRAINAGE PLANS	30	PLUMBING TYPICAL PLANS
23	WATER TREATMENT PLANS	31	PLUMBING TYPICAL PLANS
24	WATER DISTRIBUTION PLANS	32	PLUMBING TYPICAL PLANS
25	SEWERAGE AND SANITATION PLANS	33	PLUMBING TYPICAL PLANS
26	STORM DRAINAGE PLANS	34	PLUMBING TYPICAL PLANS
27	WATER TREATMENT PLANS	35	PLUMBING TYPICAL PLANS
28	WATER DISTRIBUTION PLANS	36	PLUMBING TYPICAL PLANS
29	SEWERAGE AND SANITATION PLANS	37	PLUMBING TYPICAL PLANS
30	STORM DRAINAGE PLANS	38	PLUMBING TYPICAL PLANS
31	WATER TREATMENT PLANS	39	PLUMBING TYPICAL PLANS
32	WATER DISTRIBUTION PLANS	40	PLUMBING TYPICAL PLANS
33	SEWERAGE AND SANITATION PLANS	41	PLUMBING TYPICAL PLANS
34	STORM DRAINAGE PLANS	42	PLUMBING TYPICAL PLANS
35	WATER TREATMENT PLANS	43	PLUMBING TYPICAL PLANS
36	WATER DISTRIBUTION PLANS	44	PLUMBING TYPICAL PLANS
37	SEWERAGE AND SANITATION PLANS	45	PLUMBING TYPICAL PLANS
38	STORM DRAINAGE PLANS	46	PLUMBING TYPICAL PLANS
39	WATER TREATMENT PLANS	47	PLUMBING TYPICAL PLANS
40	WATER DISTRIBUTION PLANS	48	PLUMBING TYPICAL PLANS
41	SEWERAGE AND SANITATION PLANS	49	PLUMBING TYPICAL PLANS
42	STORM DRAINAGE PLANS	50	PLUMBING TYPICAL PLANS
43	WATER TREATMENT PLANS	51	PLUMBING TYPICAL PLANS
44	WATER DISTRIBUTION PLANS	52	PLUMBING TYPICAL PLANS
45	SEWERAGE AND SANITATION PLANS	53	PLUMBING TYPICAL PLANS
46	STORM DRAINAGE PLANS	54	PLUMBING TYPICAL PLANS
47	WATER TREATMENT PLANS	55	PLUMBING TYPICAL PLANS
48	WATER DISTRIBUTION PLANS	56	PLUMBING TYPICAL PLANS
49	SEWERAGE AND SANITATION PLANS	57	PLUMBING TYPICAL PLANS
50	STORM DRAINAGE PLANS	58	PLUMBING TYPICAL PLANS
51	WATER TREATMENT PLANS	59	PLUMBING TYPICAL PLANS
52	WATER DISTRIBUTION PLANS	60	PLUMBING TYPICAL PLANS
53	SEWERAGE AND SANITATION PLANS	61	PLUMBING TYPICAL PLANS
54	STORM DRAINAGE PLANS	62	PLUMBING TYPICAL PLANS
55	WATER TREATMENT PLANS	63	PLUMBING TYPICAL PLANS
56	WATER DISTRIBUTION PLANS	64	PLUMBING TYPICAL PLANS
57	SEWERAGE AND SANITATION PLANS	65	PLUMBING TYPICAL PLANS
58	STORM DRAINAGE PLANS	66	PLUMBING TYPICAL PLANS
59	WATER TREATMENT PLANS	67	PLUMBING TYPICAL PLANS
60	WATER DISTRIBUTION PLANS	68	PLUMBING TYPICAL PLANS
61	SEWERAGE AND SANITATION PLANS	69	PLUMBING TYPICAL PLANS
62	STORM DRAINAGE PLANS	70	PLUMBING TYPICAL PLANS
63	WATER TREATMENT PLANS	71	PLUMBING TYPICAL PLANS
64	WATER DISTRIBUTION PLANS	72	PLUMBING TYPICAL PLANS
65	SEWERAGE AND SANITATION PLANS	73	PLUMBING TYPICAL PLANS
66	STORM DRAINAGE PLANS	74	PLUMBING TYPICAL PLANS
67	WATER TREATMENT PLANS	75	PLUMBING TYPICAL PLANS
68	WATER DISTRIBUTION PLANS	76	PLUMBING TYPICAL PLANS
69	SEWERAGE AND SANITATION PLANS	77	PLUMBING TYPICAL PLANS
70	STORM DRAINAGE PLANS	78	PLUMBING TYPICAL PLANS
71	WATER TREATMENT PLANS	79	PLUMBING TYPICAL PLANS
72	WATER DISTRIBUTION PLANS	80	PLUMBING TYPICAL PLANS
73	SEWERAGE AND SANITATION PLANS	81	PLUMBING TYPICAL PLANS
74	STORM DRAINAGE PLANS	82	PLUMBING TYPICAL PLANS
75	WATER TREATMENT PLANS	83	PLUMBING TYPICAL PLANS
76	WATER DISTRIBUTION PLANS	84	PLUMBING TYPICAL PLANS
77	SEWERAGE AND SANITATION PLANS	85	PLUMBING TYPICAL PLANS
78	STORM DRAINAGE PLANS	86	PLUMBING TYPICAL PLANS
79	WATER TREATMENT PLANS	87	PLUMBING TYPICAL PLANS
80	WATER DISTRIBUTION PLANS	88	PLUMBING TYPICAL PLANS
81	SEWERAGE AND SANITATION PLANS	89	PLUMBING TYPICAL PLANS
82	STORM DRAINAGE PLANS	90	PLUMBING TYPICAL PLANS
83	WATER TREATMENT PLANS	91	PLUMBING TYPICAL PLANS
84	WATER DISTRIBUTION PLANS	92	PLUMBING TYPICAL PLANS
85	SEWERAGE AND SANITATION PLANS	93	PLUMBING TYPICAL PLANS
86	STORM DRAINAGE PLANS	94	PLUMBING TYPICAL PLANS
87	WATER TREATMENT PLANS	95	PLUMBING TYPICAL PLANS
88	WATER DISTRIBUTION PLANS	96	PLUMBING TYPICAL PLANS
89	SEWERAGE AND SANITATION PLANS	97	PLUMBING TYPICAL PLANS
90			



SHEET TITLE	TITLE SHEET
BO #	23-523
REQ #	334-822
DATE	4-8-24
TS	



REH&A
ARCHITECTS
P.C.

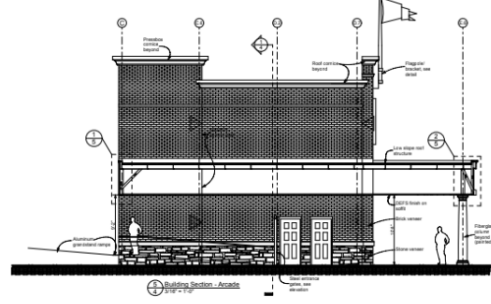
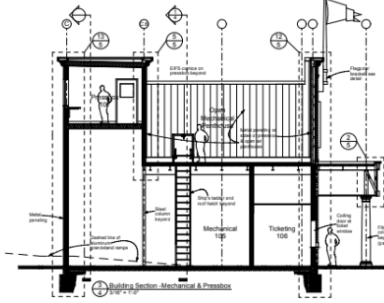
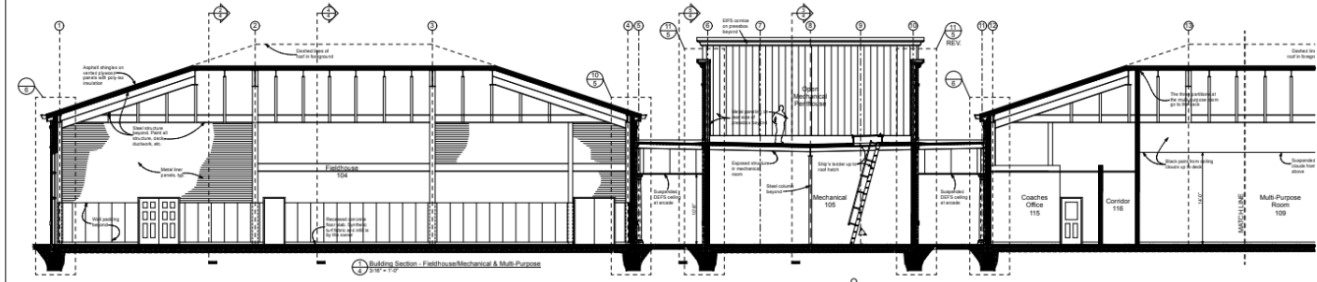
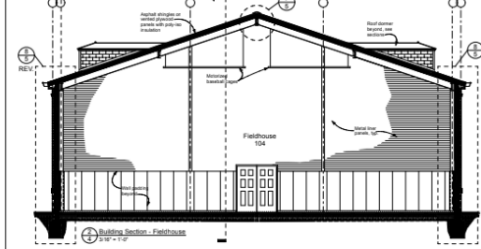
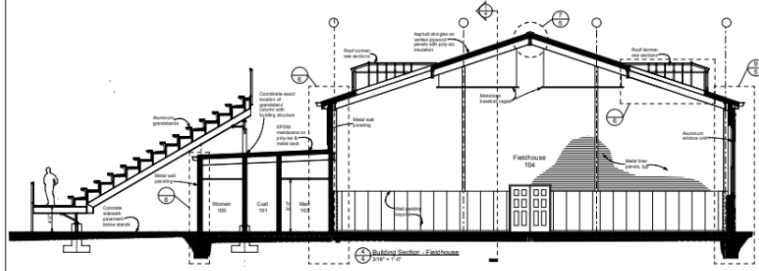


Tower Park Athletic Complex - Phase 2: Renovations
Army Reserve Road Fort Thomas, Kentucky 41075
Fort Thomas Independent Schools
Mr. Brian Robinson, Superintendent

SHEET TITLE
Floor Plan, Roof Plan & Schedules

REV #
23-523
REV #
334-822
DATE
4-8-24

Rich in Tradition Focused on the Future

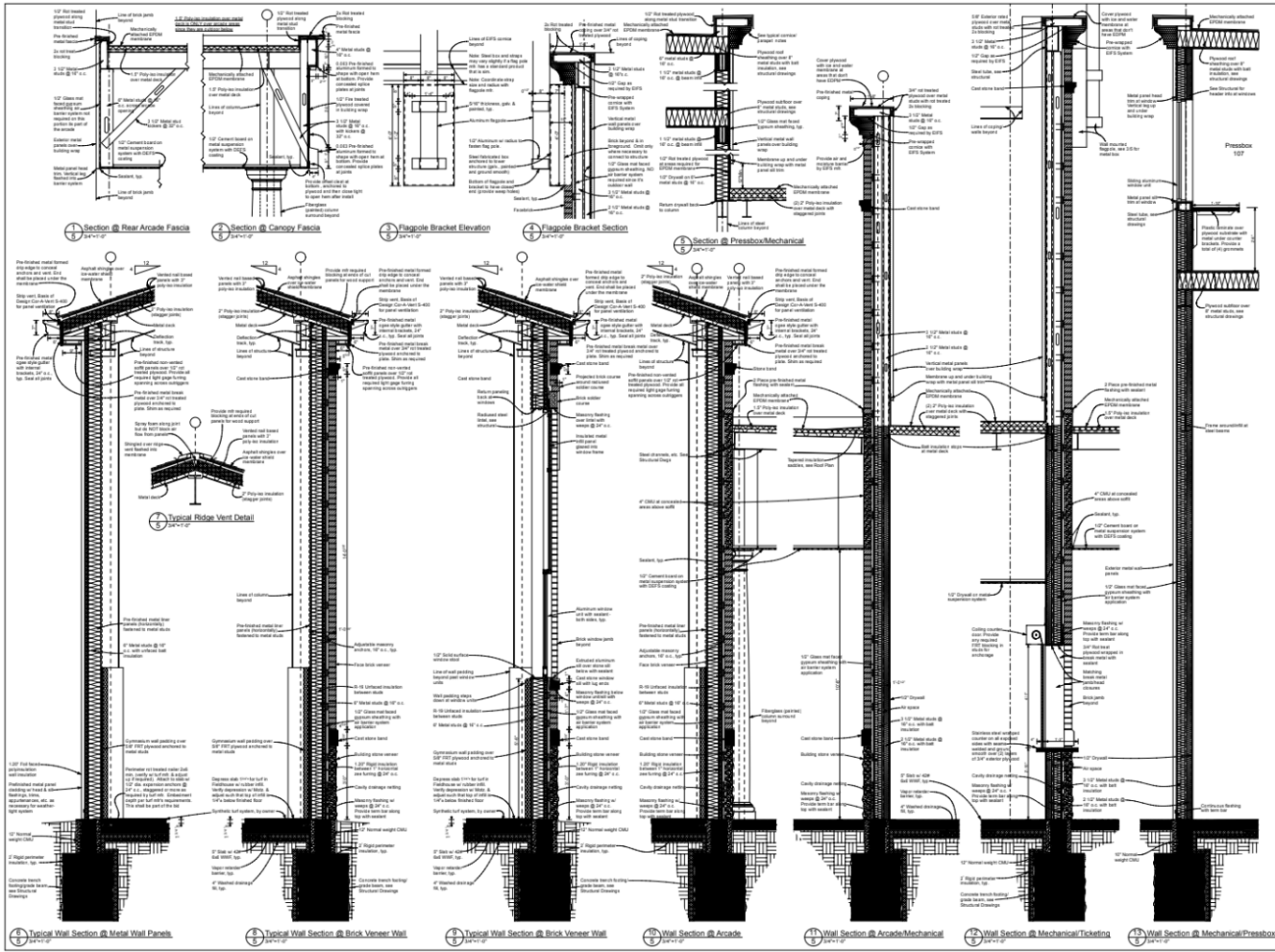


SHEET TITLE	
Building Sections	
BIG #	23-523
REB #	334-522
DATE	4-8-24
4	

Tower Park Athletic Complex - Phase 2: Renovations
 Army Reserve Road
 Fort Thomas, Kentucky 41075
 Mr. Brian Robinson, Superintendent

REH&A ARCHITECTS
 ROBERT EMMETT HAYES & ASSOCIATES, PLLC
 440 CENTRE STREET, SUITE 200, FORT THOMAS, KY 41075
 502.334.5222

Rich in Tradition Focused on the Future



Tower Park Athletic Complex - Phase 2: Renovations

Fort Thomas, Kentucky 41075

Fort Thomas Independent Schools

W. Earl Robinson, Superintendent

SHEET TITLE
Enlarged
Details

SHEET #
23-523

REV #
334-822

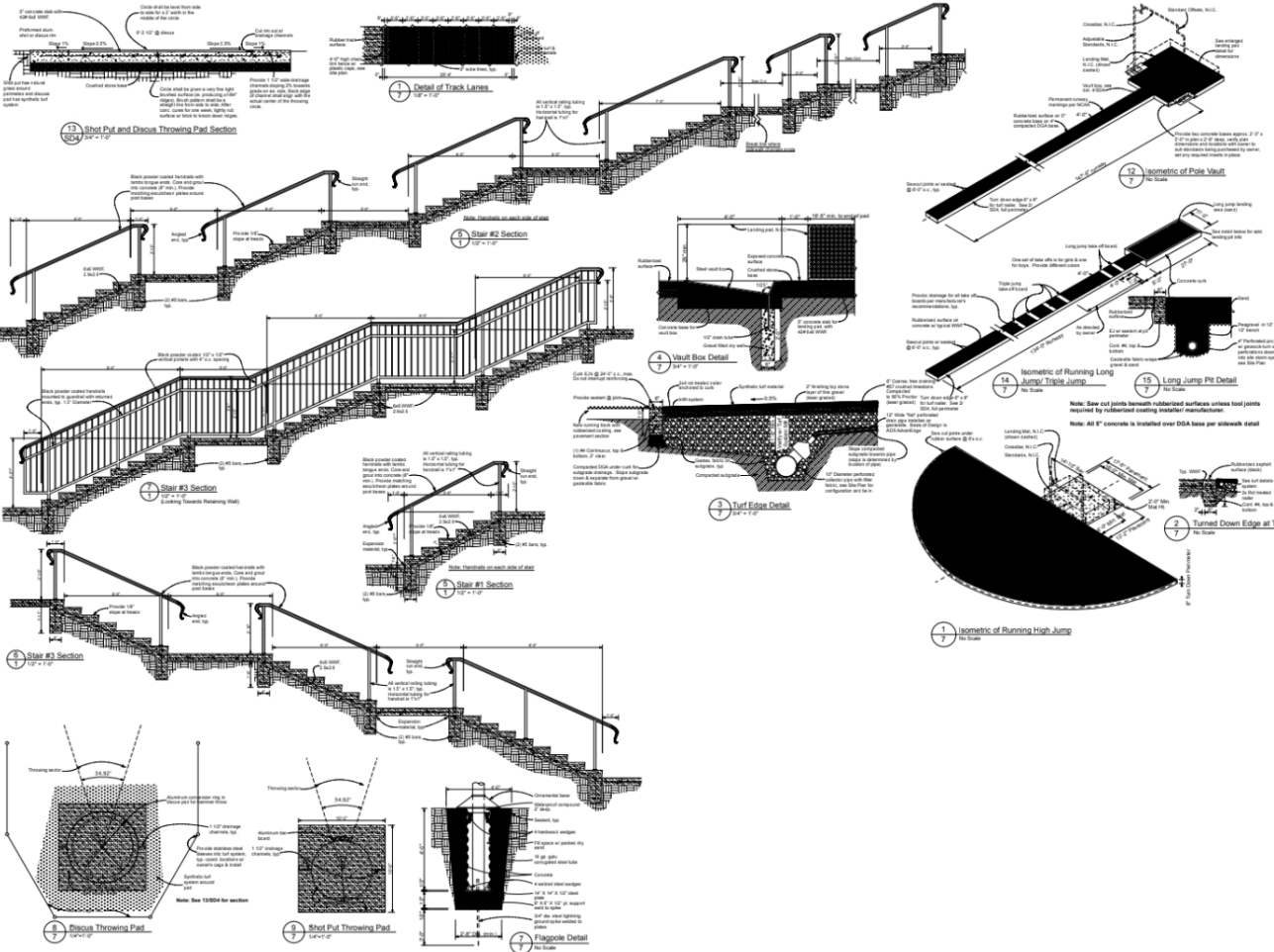
DATE
4-8-24

5

REH&A
ARCHITECTS

ROBERT REHNER PARTNERS & ASSOCIATES, PLLC
440 SOUTH MAIN STREET, SUITE 200, FORT THOMAS, KY 41075





Community Partnership

- Private Partners: St. Elizabeth Sports Medicine and OrthoCincy
- City of Fort Thomas
- State Budget Support
- FTEF
- FTIS

Discussion

- Next steps
- Questions

